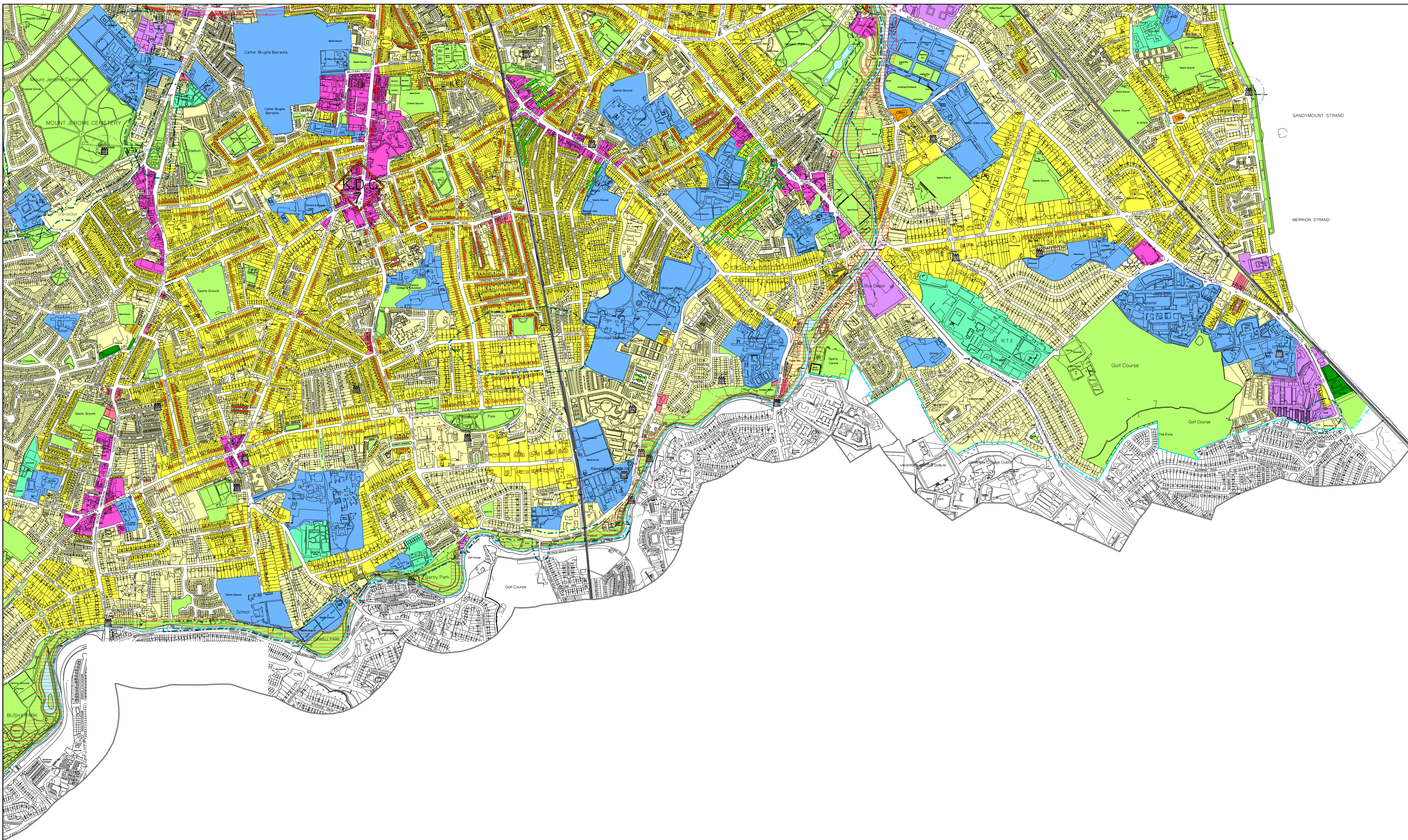
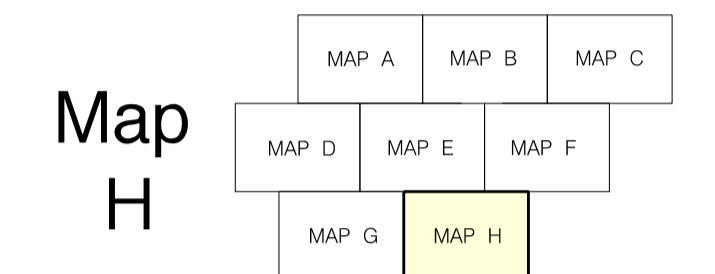


# Dublin City Development Plan 2016-2022



**USE ZONING OBJECTIVES**

Zone Z1	To protect, provide and improve residential amenities	[Light Yellow Box]
Zone Z2	To protect and/or improve the amenities of residential conservation areas	[Yellow Box]
Zone Z3	To provide for and improve neighbourhood facilities	[Pink Box]
Zone Z4	To provide for and improve mixed-services facilities	[Cyan Box]
Zone Z5	To consolidate and facilitate the development of the central area and to identify, reinforce, strengthen and protect its civic design character and dignity	[Purple Box]
Zone Z6	To provide for the creation and protection of enterprise and facilitate opportunities for employment creation	[Light Purple Box]
Zone Z7	To provide for the protection and creation of industrial uses and facilitate opportunities for employment creation	[Dark Purple Box]
Zone Z8	To protect the existing architectural and civic design character and to allow only for limited expansion consistent with the conservation objective	[Orange Box]
Zone Z9	To preserve, provide and improve recreational amenity and open space and green networks	[Light Green Box]
Zone Z10	To consolidate and facilitate the development of inner city and inner suburban sites for mixed-uses, with residential the predominant use in suburban locations, and office/residential the predominant uses in inner city areas	[Dark Green Box]
Zone Z11	To protect and improve canal, coastal and river amenities	[Light Blue Box]
Zone Z12	To ensure that existing environmental amenities are protected in the predominantly residential future use of these lands	[Green Box]
Zone Z14	To seek the social, economic and physical development and/or rejuvenation of an area with mixed use of which residential and "2b" would be the predominant uses	[Blue Box]
Zone Z15	To protect and provide for institutional and community uses	[Dark Blue Box]

**SPECIFIC OBJECTIVES**

Conservation Areas	[Red Hatched Box]
Architectural Conservation Areas	[Green Hatched Box]
Protected Structures. [RPS takes precedence]	[Red Star Symbol]
Sites of Archaeological Interest	[Red Star Symbol]
Zones of Archaeological Interest	[Blue Dashed Box]
Key District Centres	[Red Diamond Symbol]
SEVESO II establishments	[Red Circle Symbol]
Strategic Development & Regeneration Areas	[Red Circle Symbol]
LAP (Local Area Plan) & SDZ (Special Development Zone)	[Red Line Symbol]
Dublin Airport Outer Public Safety Zone	[Blue Line Symbol]

**ROADS**

Road Schemes and Bridges [Three Black Dots]

1. Map to be read in conjunction with the written statement  
2. Roads objectives are shown diagrammatically

The titles Ordnance Survey Ireland plans reproduced under OS Licence Number 2016/22/0000/001 (S17) cannot be used for reproduction without the permission of Ordnance Survey Ireland and Government of Ireland copyright.  
© Ordnance Survey Ireland, 2016

City Boundary [Red Dashed Line]

Scale: 0 100 200 300 400 500 metres