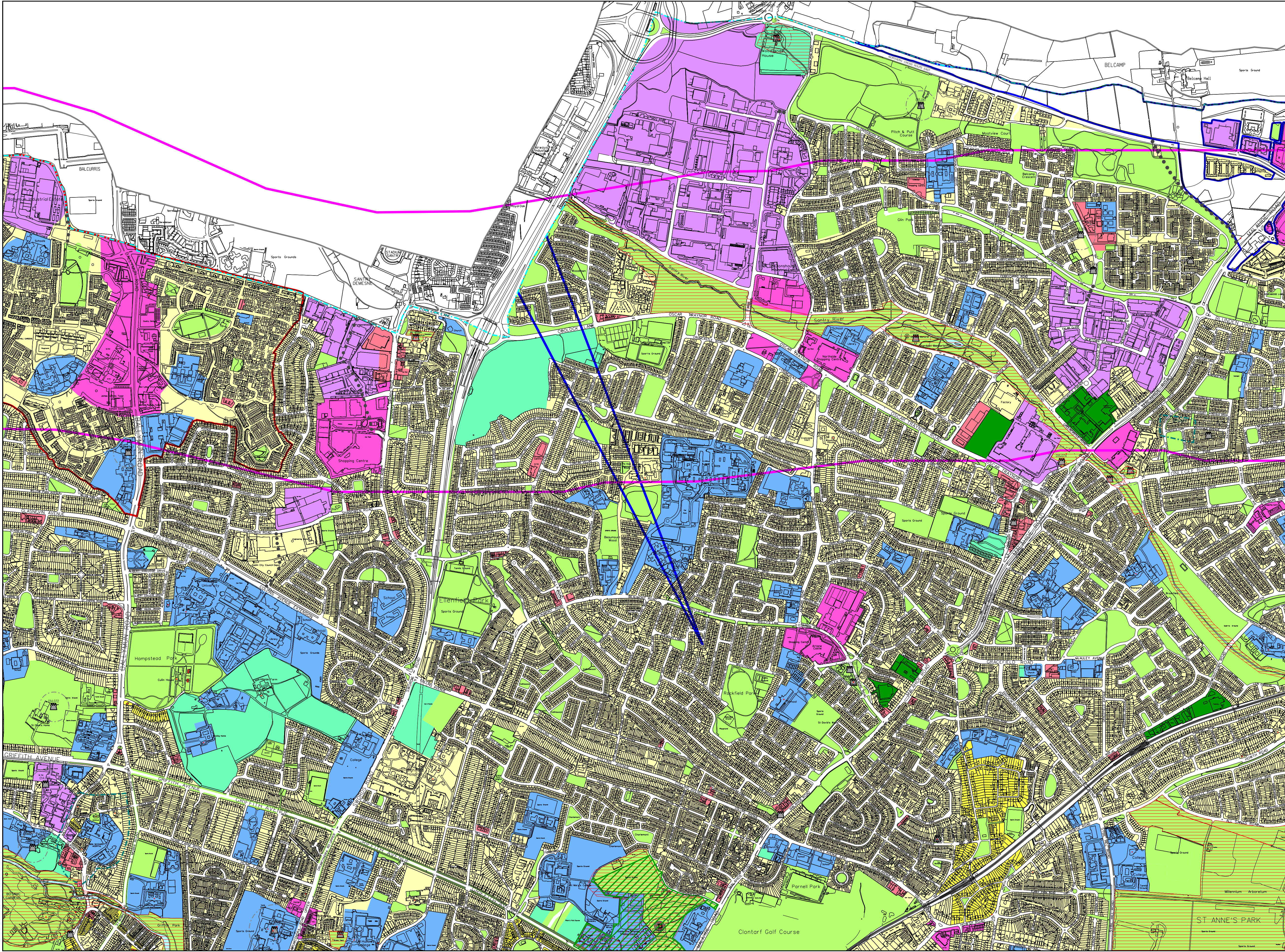
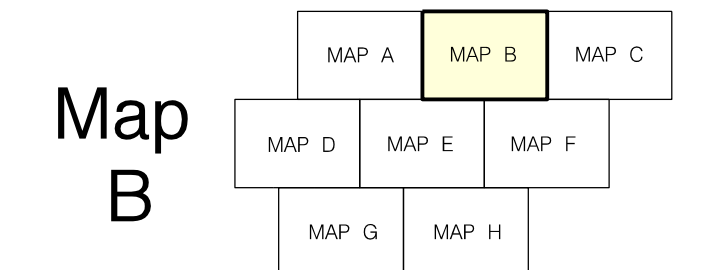


Dublin City Development Plan 2022-2028



PRIMARY LAND USE ZONING CATEGORIES

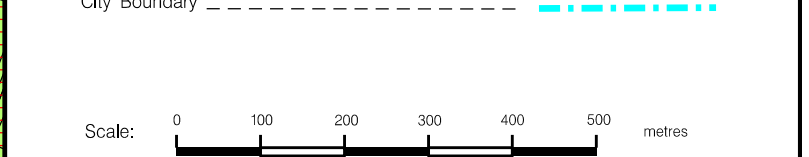
Zone Z1 Sustainable Residential Neighbourhoods	[Yellow box]
Zone Z2 Residential Neighbourhoods (Conservation Areas)	[Light Green box]
Zone Z3 Neighbourhood Centres	[Pink box]
Zone Z4 Key Urban Villages / Urban Villages	[Light Blue box]
Zone Z5 City Centre	[Light Green box]
Zone Z6 Employment/Enterprise	[Purple box]
Zone Z7 Employment (Heavy)	[Light Blue box]
Zone Z8 Georgian Conservation Areas	[Orange box]
Zone Z9 Amenity/Open Space Lands/Green Network	[Light Green box]
Zone Z10 Inner Suburban and Inner City Sustainable Mixed-Uses	[Dark Green box]
Zone Z11 Waterways Protection	[Light Blue box]
Zone Z12 Institutional Land (Future Development Potential)	[Light Green box]
Zone Z14 Strategic Development and Regeneration Areas (SDRA)	[Blue box]
Zone Z15 Community and Social Infrastructure	[Light Blue box]

SPECIFIC OBJECTIVES

Conservation Areas	[Red dashed line]
Architectural Conservation Areas	[Green hatched box]
Protected Structures (RPS takes precedence)	[Red star symbol]
Record of Monuments and Places (RMP) as Established under Section 12 of the National Monuments (Amendment) Act 1994	[Black star symbol]
Record of Monuments and Places (RMP) as Established under Section 12 of the National Monuments (Amendment) Act 1994	[Blue dashed line]
National Monuments	[Black circle symbol]
COMAH establishments (SEVESO establishments)	[Red circle symbol]
LAP (Local Area Plan) & SDZ (Special Development Zone)	[Red line]
Dublin Airport Outer Public Safety Zone	[Blue line]
Dublin Airport Noise Zones	[Pink line]
ROADS Roads, Street and Bridge Schemes	[Black dots]

1. Map to be read in conjunction with the written statement
 2. Road objectives are shown diagrammatically
 3. *See Record of Monuments and Places (RMP) at <https://www.archaeology.ie/publication-forms-48488/record-of-monuments-and-places>
 For updated information see the Historic Environment Viewer at <https://maps.archaeology.ie/HistoricEnvironment/>
 The RMP does not include all known archaeological sites and monuments, given that further such sites and monuments are found on an ongoing basis. For that reason it is very important (in the context of considering proposed development) to take account of all information available on the Historic Environment Viewer (HEV)
 4. See written statement (Chapter 14) for full zoning text

City Boundary



John O'Hara
Dublin City Planner