



---

## Quarterly Report of the Active Travel Programme Office – December 2023

---

### Contents

1.	Introduction.....	2
2.	Active Travel Programme Office.....	2
3.	Key Achievements during Q4 2023 .....	2
4.	Community Engagement.....	3
5.	Schemes in Construction.....	4
5.1	Clontarf to City Centre (C2CC) .....	4
5.2	Royal Canal Greenway Phase 3.....	8
5.3	Dodder Greenway – Herbert Park to Donnybrook .....	9
5.4	South Grand Canal Cycle Safety Improvements .....	11
5.5	East Coast Trail North Phase 1.....	11
5.6	Liffey Cycle Route .....	12
5.7	Kilmainham to Thomas Street.....	13
6	Schemes in Design .....	13
6.1	Royal Canal Phase 4 .....	13
6.2	Dodder Greenway Overall .....	14
6.3	Fitzwilliam Cycle Route.....	15
6.4	Sandyford (Clonskeagh) to City Centre .....	15
6.5	Trinity to Ballsbridge.....	15
6.6	Grand Canal to Lincoln Place .....	15
6.7	Chapelizod Road to Chapelizod ByPass .....	15
6.8	Chesterfield Avenue Project .....	16
6.9	Sir John Rogerson Quay Project .....	16
6.10	Grand Canal Greenway (Blackhorse to Portobello).....	16
6.11	Santry Greenway .....	16
6.12	Finglas Village Improvement Scheme.....	16
6.13	Finglas Area Roundabouts Scheme .....	16
6.14	Grangegorman to Portobello .....	17
6.15	North Circular Road .....	17
6.16	Cabra to Blanchardstown (Ratoath Road & Cappagh Rd) .....	17
6.17	Dalymount to Cabra Cross .....	17
6.18	Coolock to Clontarf (Gracefield Rd, Brookwood Ave, Sybil Hill Rd & Vernon Ave)	18
6.19	Raheny to Kilbarrack (Howth Rd, from Station Rd to James Larkin Rd).....	18
6.20	Bayside to Donaghmede (Kilbarrack Rd to Oscar Traynor Rd).....	18
6.21	S2S Clontarf Baths .....	18
7	Complete Project Table – .....	19
8	Communications .....	23

## 1. Introduction

Dublin City Council is developing a safer, inclusive and sustainable walk-wheel-cycle network. This Active Travel Network will enhance quality of life by 'connecting all the people' through improving access, connectivity and sustainable mobility. The network will also contribute to a citywide reduction of transport-related carbon emissions.

## 2. Active Travel Programme Office

The Active Travel Programme Office (AcTPrO) was set up in 2022 and the team continues to grow, albeit not as fast as would be preferred due to challenges recruiting some skills. The team is staffed by engineers, planners, architects, site engineering staff, walking and cycling officers, administrators and landscape architects.

The office completed the appointment of an external design team from a multi-party framework for Active Travel design services within the quarter.

AcTPrO published the Dublin City Active Travel Network in October 2022, a network that will ensure that 95% of us will be within 400m of a connected 310km network. AcTPrO is responsible for the delivery of 210km of this network, through an agreed portfolio of 80no. projects funded by the National Transport Authority (NTA), the NTA's Bus & Bike Connects programme making up the difference.

The rapid expansion of enhanced walking and cycling facilities remains key to shaping the network, notwithstanding reduced funding expected in 2024. This will be achieved by building a network of protected cycling facilities and improvements to pedestrian facilities. This approach is fully aligned with national policy for meeting our Climate Action targets for 2030.

Further information about the Active Travel Network, including an interactive GIS map of all routes and a complete list of roads and streets where activities are proposed is available on [www.dublincity.ie/activetravel](http://www.dublincity.ie/activetravel)

AcTPrO can be contacted by email on [ActiveTravelOffice@dublincity.ie](mailto:ActiveTravelOffice@dublincity.ie)

## 3. Key Achievements during Q4 2023

AcTPrO continues to refine the overall strategy for delivering a connected core active travel network for the city while also implementing several ongoing projects.

During this quarter:

- The Clontarf to City Centre (C2CC) scheme opened 950m of inbound cycle-track in addition to the 1500m that was already open. This brings a total of 2.45km of new inbound cycle-track and footway which is open and in use. A number of further scheme milestones reached are highlighted in the comprehensive project report in item 5.1 below.
- On the Liffey Cycle Route, the Contractor has now completed cycling facilities on the north Quays along Eden Quay, between O'Connell St and Beresford Place.
- A further section of the Liffey Cycle Route, from Georges Quay to Aston Quay will commence implementation during Q1 2024.
- Dodder Greenway – Herbert Park to Donnybrook has moved towards completion with the new improved facilities set to be commissioned in early Q1 2024. The signaled pedestrian crossings (Toucans) on Donnybrook Road and Eglington Road were commenced and completed during the months of October and November.
- Works were completed in Q4 2023 on the Hole in the Wall Roundabout Improvement Project. The final work included updated road markings and installation of anti-skid surfacing to address

the concerns of the local community.

Ongoing projects are discussed further in Sections 5 and 6 of this report.

#### 4. Community Engagement

AcTPrO follows an implementation programme for the network which entails a process of engagements with key stakeholders, including business and interest group representatives, on how certain aspects of the network will be implemented. During these engagements, particular focus is placed on how the proposed interventions on the overall Active Travel Network can be delivered in a manner that enhances the benefits to the city, given that 95% of us will be within 400 meters of a connected network.

During the quarter, there was one walk-in information session conducted, one non-statutory public consultation initiated, one non-statutory public consultation continued, one leaflet drop carried out, and one statutory Part 8 public consultation continued.

AcTPrO engaged in public awareness-raising activities relating to the overall Active Travel Network including:

- Supporting DCC Climate Action Team and delivering a presentation at the Ballymun Decarbonising Zone Community Conference.
- Coordinating and participating at a workshop for the FOLLOW project.



Image 1. Ballymun Decarb Zone public consultation, this event was attended by local councillors, members of the public and community groups.



Image 2. Active Travel team facilitated a workshop for the FOLLOW project.

## 5. Schemes in Construction

The number of projects with construction activity increased to seven during the quarter.

### Clontarf to City Centre (C2CC)

The Clontarf to City Centre Project will deliver 8km of walking facilities, 6km of cycling facilities, and 5.4km of bus lanes, from Alfie Byrne Road/Clontarf Road Junction to Amiens Street/Talbot Street Junction and a section of the Tolka Valley Greenway from Annesley Bridge to Alfie Byrne Road/East Wall Road Junction. Construction commenced in Q1 2022 and remains on schedule for substantial completion in Q1 2024.

A major diversion at Fairview that was put in place in early August last year and private car diversion through Ballybough and Portland Row remains in place. With a significant proportion of the inbound side of the scheme substantially completed the Contractor continues to progress the outbound side. The Contractor has a substantial workforce of typically 100no. operatives at any given time in an effort to progress the works as quickly as possible.

The latest C2CC Consultative Forum which includes local Councilors and representatives from local residents and businesses was held on Friday 15th December in Carleton Hall in Marino. The Project Team remain committed to engaging with the local residents and business owners along the route to discuss issues as they may arise. Further and additional enhanced engagement will occur as the Christmas season approaches.

During Q4 the site has undergone significant transformation and achieved major milestones;

- On the 30<sup>th</sup> November 2023 950m of inbound cycle-track was opened in addition to the 1500m that was already open. This brings a total of 2.45km of new inbound cycle-track and footway which is open and in use (between Clontarf Promenade and Amiens Street / Buckingham Street junction), which a significant portion of the track. In these first few weeks it appears to be well used and we are receiving good feedback from local community.

- From Talbot Street to Buckingham Street Lower, works are progressing well on the CIE retaining wall and railings. The concrete retaining wall has been entirely constructed and the mixed rubble stone wall is almost complete. Refurbishment of the original railing continues off site and shall be installed later in the scheme once all works have been substantially completed in the area. Works are also progressing on the outbound side adjacent to Buckingham Street / Amiens Street Junction. At the Buckingham Street / Foley Street junction paving and landscaping works are now complete. Works have commenced on the junction of Talbot Street and Amiens Street with traffic ducting, watermain, tree pits, kerbing, public lighting, drainage, cycle-track and footway construction underway and progressing well.
- From Buckingham Street Lower to Five Lamps Junction, works have greatly progressed on the outbound side with construction of the cycle-track and the opening of the Amiens Street bus stop. A large proportion of the parking and new footway in this area has also opened. Works are substantially complete on the inbound side and as mentioned the inbound cycle-track and footway are in use.
- Works continue to progress all along the Outbound side of North Strand Road between Five Lamps and East Wall Road with the installation of watermains, surface water drainage, kerbs, paving works, cycle-track construction and public lighting ongoing. Works on the inbound side have progressed well in the last quarter with the new footway and cycle-track opened and in use since 30<sup>th</sup> November. Parking bays and the bus stop are also complete and in use on the inbound side.
- From Annesley Bridge to the Howth Road Junction works are progressing on the outbound side. Watermains, surface water drainage, kerbs, public lighting, footway and cycle-track construction are progressing. Significant engagement with the owners and businesses continues through this area. An in-depth review is ongoing with regard to a potential clash with existing ESB services on the outbound side of Fairview Village. Work is ongoing to progress the matter as quickly as is possible. Works are substantially completed on the inbound side with the cycle-track open and in regular use through this section. On the Malahide Road inbound the new bus stop is progressing well along with the installation of a new taxi shelter.
- Works in Fairview Park along by the Tolka River began in May and have progressed beneath the East Wall Bridge towards Alfie Byrne Road. Works include public light ducting and DCC Traffic ducting. Surfacing works shall follow in the New Year with installation of benches and lighting. As the East Wall Road Scheme has progressed the tie-in and link between the two schemes has become apparent.
- From Howth Road Junction to Alfie Byrne Road Junction, works on the inbound side are substantially completed. There remains some drainage works outside the Westwood Gym but the new footpath and cycle-track is open and in use. Over the course of Q4 works have begun in earnest on the outbound side with a new bus stop, watermain, surface water drainage, kerbing, set-down area and cycle-track all progressing well.
- After the placement of wearing course and the permanent road markings on the Alfie Byrne Road junction the commissioning of the traffic signals followed on Wednesday 23<sup>rd</sup> August. This is the first junction on the scheme to have the wearing course completed and the traffic signals operating. The outstanding two cantilever signal columns are to be installed in January 2024.
- Of the 6no. bus stops to be constructed on the inbound side 5no. are complete and in use. On the outbound side there are now 2no. of the outbound stops completed and in use.
- As the winter season has arrived additional trees throughout the scheme are being planted in addition to shrubbery and other landscaping measures at their respective locations.

Some of the main work activities carried out during the quarter include road reconstruction, watermain replacements, road drainage installations, upgrade of traffic signals and junctions, tree pit construction, resetting antique kerbing and new granite kerbing installations, construction works at a number of inbound bus stops, public lighting and cycle track construction works.

Although the scheme is mid-construction there are a number of significant deliverables which are already substantially completed such as;

- Approximately 3km of new footpath construction is completed and open for use on the inbound side. Along this inbound footway route there are 10no. side roads where pedestrians have been provided with a raised table to highlight their priority to cross and to assist with ease of travel.
- Approximately 2,450m of new cycle-track is open for public use on the inbound side. These sections of track are in regular use.
- Approximately 4km of new traffic signal ducting has been completed to connect all of the new junctions along the route.
- There are now 5no. new bus stops constructed and in use on the inbound side. There are 2no. new stops constructed on the outbound side.
- Wearing course, road markings are completed and traffic signals commissioned on Alfie Byrne Road junction. This is the first junction on the Scheme to be commissioned and operational. The junction provides a segregated safe method of crossing for both pedestrians and cyclists alike.
- New watermain connections are progressing each week with significant watermain works completed (approx.. 6km). As each new section of watermain is laid and connected it improves the security of supply for all those along the route who are connected to these new pipelines.
- There are approximately 140no. new lighting columns installed along the route to date providing improved and modern standard lighting to the streets. (Please note the embellishments on the columns through Fairview shall follow once the majority of the heavy civil works are completed).
- There is approximately 20,000m<sup>2</sup> of full-depth road construction completed. These works require lane and junction closures to excavate the entirety of the existing road and then the reconstruction back-up in layers over the course of a night or weekend ready for the lane to be re-opened to traffic.
- Landscaping, tree planting and other greening works continue all along the route.

In order to undertake a number of road crossings and road reconstruction related works, regular weekend and night time works were undertaken through Q4. Once Operation Open City, which runs through the month of December is over, significant weekend works shall recommence in the New Year. Regular notifications of these works shall continue to be sent out via DCC's social media accounts, and to the C2CC Consultative Forum which includes local Councillors, and representatives from residents and businesses.

Further information on the project is accessible on the Dublin City Council webpages. The address is [www.c2cc.ie](http://www.c2cc.ie)



Image 3. C2CC - Works progressing well on Annesley Bridge inbound



Image 4. C2CC - Redesigned Junction at Alfie Byrne Road has been fully opened for public use

## 5.1 Royal Canal Greenway Phase 3

Royal Canal Greenway Phase 3 will provide 2.1km of cycling facilities and 2.1km of walking facilities along the Royal Canal, from Newcomen Bridge (North Strand Road) to Cross Guns Bridge (Phibsborough Road). The contractor was appointed in December 2022. Construction kicked off with the Lord Mayor of Dublin Caroline Conroy and Minister for Public Expenditure, National Development Plan Delivery & Reform, Paschal Donohoe TD, helping to 'turn the sod' on 15<sup>th</sup> February 2023. The scheme is scheduled for completion in Q2 2025.

Works on the Charleville Mall roadway and southern footpath were substantially completed on 17<sup>th</sup> November. However, due to an ESB underground cable strike the road closure was extended until 1<sup>st</sup> December to facilitate essential cable repairs that were successfully completed earlier than expected and the road was reopened to through vehicular traffic on 28<sup>th</sup> November. Works at the junction with North Strand Road are due to commence in Q1 2024 and will be undertaken as part of the Clontarf to City Centre (C2CC) project.

Works on the Charleville Mall northern footpath are delayed until structural repair works are carried out on the canal quay wall between Lock 1 and Clarke's Bridge. These pre-existing quay wall defects were not previously detected as they were below the normal water level. During the summer of 2023, the water level was lowered to facilitate pile cap works further upstream. The defects were only observed at this stage. These defects render the quay wall unstable. A 315mm diameter gas main adjacent to the canal quay wall will also need to be diverted to facilitate stabilisation works. DCC are currently liaising with Gas Networks Ireland on this matter. Due to the complexity of the proposed works, it is not expected that works will be completed on the Charleville Mall northern footpath until at least Q3 2024.

Works at Clarke's Bridge / Summerhill Parade are on hold until April 2024 due to restrictions imposed by the C2CC project. Summerhill Parade forms part of the C2CC diversion route for inbound traffic.

The Russell Street east and west ramp works are ongoing. The construction of the ramp foundation piles, pile caps and support columns have been completed. Road crossing works on Russell Street are due to commence in late January 2024. To facilitate the works, Russell Street will be closed to vehicular traffic for approximately two weeks, followed by lane closures for a further four weeks. Pedestrian access will be maintained to the greatest possible extent, particularly on Croke Park match days.

Approximately 90 linear meters of sheet piles were installed along the canal bank opposite Portland Place Park in November. Full embedment depths were not achieved, which will necessitate additional ground anchors. These are due for installation in early 2024.

A Part VIII Planning application for Binn's Bridge was brought to the Council Meeting on 6<sup>th</sup> November. Detailed design is currently underway with planning compliances to be submitted prior to construction which is expected to commence in Q1 2024.

Waterways Ireland commenced canal dredging works between Binns Bridge and Lock 3 in October and these works were completed in mid-November.

ESB high voltage and communications ducting works are ongoing between Cross Guns Bridge and Binns Bridge. These works are due for completion by the end of January 2024. Kerb laying commenced in November and is due for completion in Q1 2024.

Site investigation works on Phibsborough Road / Prospect Road at Cross Guns Bridge commenced in November to determine the depth and location of existing services and to provide additional information to determine a service corridor route for all road crossings. Construction works are due to commence on Cross Guns Bridge in January 2024. This will necessitate temporary closure of the inbound bus lane, followed by the outbound bus lane. These works are anticipated to take about 12 weeks to complete.



The project webpage is updated as works progress on site; its address is [www.dublincity.ie/rcgp3](http://www.dublincity.ie/rcgp3)

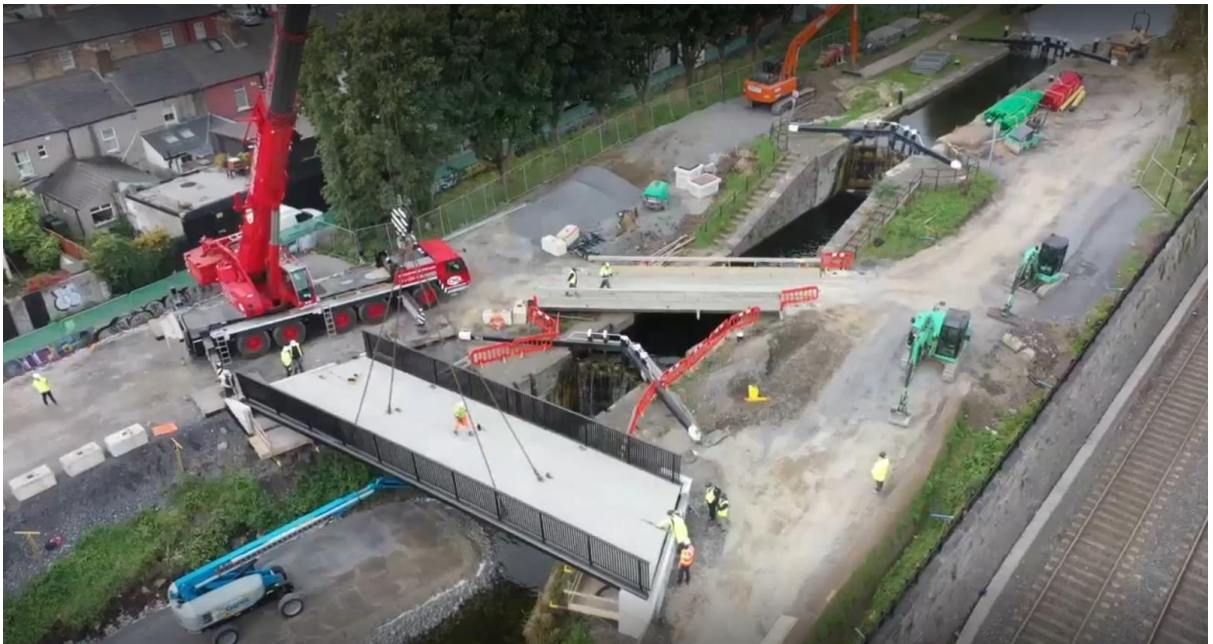


Image 5. Royal Canal Greenway Phase 3 – October 2023 Bridge Install



Image 6. Royal Canal Greenway Phase 3 – October 2023 Bridge Install

## 5.2 Dodder Greenway – Herbert Park to Donnybrook

The scheme will deliver 480m of walking and cycling facilities, including flood protection measures, along the Dodder River between the entrance to Herbert Park at Eglinton Terrace and Anglesey Bridge.

Construction started in Q4 2022. The project is scheduled to be commissioned in Q1 2024.

Works for the IRFU are BLTC are now complete. The Greenway Drainage, the Public Lighting, & Traffic Fibre ducting are 100% complete. Fencing is 95% complete. Top-soiling has started with Landscaping to follow in January 2024. Signage will commence in January 2024.

The Binder & the Wearing Course are fully complete.

The Flood Defence Walls are finished. The Entrance Walls at Herbert Park and the Entrance plaza at Donnybrook adjacent the Anglesea Bridge were complete in November 2023.

The signalized pedestrian crossings (Toucans) on Donnybrook Road and Eglington Road were commenced and completed during the months of October and November with numerous Traffic Management lane closures implemented without incident.

Snagging works are well under way with commissioning expected early February 2024.



Image 7. As part of the Active Travel Network a new Toucan crossing was commissioned on Donnybrook Road.



Image 8. Dodder Greenway & Flood Defence Herbert Park to Donnybrook – aerial view

### **5.3 South Grand Canal Cycle Safety Improvements**

The scheme will upgrade existing signalized junctions, and ‘tighten’ wide junctions to improve safety for pedestrians and cyclists. This will include the provision of signalized pedestrian crossings. A contractor for the upgrade of the junctions was appointed during Q2 2022. Works commenced in June 2022.

Main Contract Works on site have been on hold since the Liquidation of the Contractor, with localised works completed in the recent weeks.

The new lights at Clogher Road Junction are now fully operational with the majority of associated minor works at this location also completed. Emergency works have also been carried out at Aughavannagh Road to allow the pedestrian crossing to be commissioned.

A completion plan is now in place to allow the remainder of the project to be closed out. There are two main categories of works remaining – the resurfacing of the six main junctions and the completion of footpath works at Charlemont Bridge, Mount Pleasant & other minor footpath works. These have now be split into two separate works packages and completed under existing council Frameworks.

The resurfacing of the six junctions will be carried out under the Multi-Party Framework Agreement for Bituminous Pavement Contract 2020-2024.

The remaining footpath works will be completed under the Multi-Party Framework Agreement for Carrying out Roadwork Contracts 2021-25. Tender documents have now been issued to all participants in the relevant frameworks. Contracts for all remaining works are expected to be issued in the coming weeks.

### **5.4 East Coast Trail North Phase 1**

The scheme will provide 1 Km of segregated cycling facilities from Alfie Byrne Road and East Wall Rd between the East Point Business Park and St Joseph’s Primary school on East Wall Rd.

Works on the project have progressed well this quarter with 4 crews working in various locations along the scheme. All drainage, ducting and footpath works now complete. All construction works at East Road and

at the East Point Junction are now also complete.

Early in the New Year the remainder of the works at Church Rd will be carried out and the project will quickly transition from a construction site to the completed project with the completion of the new crossing to link the scheme to Fairview Park in early January 2024. Following on from this, resurfacing works will be carried out along the scheme and finally the linear cycle way segregation kerb will be installed which will link all the junctions together and complete the overall look of the scheme.

It is hoped that all works will be complete by early Q2 2024.

Further information on the project is accessible on the Dublin City Council webpages. The address is [www.dublincity.ie/ectnp1](http://www.dublincity.ie/ectnp1)

## 5.5 Liffey Cycle Route

Cycling routes are now operational from the Phoenix Park to O'Connell Bridge on the north side, and from Grattan Bridge to Heuston Station on the south side. The Contractor Cairn Construction Ltd has now completed cycling facilities along the North Quays along **Eden Quay**, between O'Connell St and **Beresford Place**.

Along the south side of the River Liffey from **Georges Quay to Aston Quay** the following works are proposed:

- A new two-way cycle track from George's Quay to Burgh Quay located on the river side of the quays
- A new one-way cycle track on Aston Quay located on the river side of the quay
- Closure of left turn slip from Burgh Quay to D'Olier Street (left turn vehicle movement retained)
- New traffic islands and associated traffic signals
- Road resurfacing of George's Quay, Burgh Quay and Aston Quay
- Other associated works (ducting, road markings, drainage etc.)

The NTA have granted approval for the project to proceed to Construction Stage. A Letter of Intent has been issued to the preferred Contractor. These works are expected to commence in Q1 2024.



Image 9. Liffey Cycle Route – Eden Quay.

## 5.6 Kilmainham to Thomas Street

- **Suir Road to Thomas Street** works for this interim scheme are now being implemented on site with completion expected in early Q1 2024.

The project team and design Consultants are progressing with the preliminary design for the full route of the **Kilmainham to Thomas Street** project with current focus on the Suir Road junction upgrade and the regeneration of St James Liner Park with cycling facilities (between Rialto Bridge and Suir Road Bridge). Public Consultation is planned for Q2 2024.

## 6 Schemes in Design

There are over 25 active travel schemes in the early planning and design phases, including six sections of the Dodder and four sections of the North Circular Road.

### 6.1 Royal Canal Phase 4

The project will deliver 4.3km of walking and cycling facilities along the Royal Canal, from Cross Guns Bridge (Phibsborough Road) to the city boundary at Ashtown.

The proposed amending Part VIII planning proposals were presented to the Central Area Committee meeting on 9th May. All of the Councillors' questions from the meeting were collated and responses were issued in writing to the Councillors on June 22nd.

Following on from the presentation to the Central Area Committee in May, an on-site meeting took place

between the Project Team and Elected Members on Tuesday 6<sup>th</sup> of June.

The Amending Part VIII for the Royal Canal Greenway Phase 4 was submitted on 21<sup>st</sup> September 2023 with the final date for submissions being November 3<sup>rd</sup>.

Due to a referral made by a 3rd Party to An Bord Pleanála on 18th October, the Draft Chief Executive's report cannot be concluded within the expected timeframe. Once a determination has been made by the Board, which is expected to be on or before 29th February 2024, the Chief Executive has 8 weeks in which to prepare a report and submit to the Council members.

## 6.2 Dodder Greenway Overall

The scheme will deliver 7.5km of walking and cycling facilities along the Dodder River, from the River Liffey to Orwell Park. A further 9.5km is being delivered by South Dublin County Council.

Dublin City Council, in conjunction with DLRCC and SDCC, will deliver the route in sections with focus currently on 6 Rapid build schemes as follows

Fitzwilliam Quay to Londonbridge Road  
Beatty's Avenue to Herbert Park  
Donnybrook Road to Clonskeagh Road  
Clonskeagh Bridge to Patrick Doyle Road  
Orwell Road to Dodder Road Lower.  
Milltown Road-Dodder Walk to Dundrum Road.

Non-Statutory Public Consultations have been progressed on three of these routes follows;

Section	Consultation period	Public Event Date & Location	Public Consultation Report Publishing Dates
Fitzwilliam Quay to Londonbridge Road	29/5/23 - 30/06/23	15/06/23 - Sandymount Community Centre	Q1 2024
Beatty's Avenue to Herbert Park	29/5/23 - 30/06/23	15/06/23 - Sandymount Community Centre	Q1 2024
Donnybrook Road to Clonskeagh Road	02/11/23 - 08/12/23	09/11/23 – Donnybrook Community Centre	Q1 2024

Detailed design is substantially complete for the Fitzwilliam Quay to Londonbridge Road and Beatty's Avenue to Herbert Park with construction to proceed in 2024 subject to NTA approval.

DLRCC anticipate lodging a Part VIII for the sections Clonskeagh Bridge to Patrick Doyle Road and Orwell Road to Dodder Road Lower in 2024; however delays have occurred due to ongoing internal consultations.

Rapid Build Active Travel options are being investigated on Milltown Road from Dodder Walk to Dundrum Road. This route would facilitate continuity of a cycle route along the Dodder in advance of the Permanent Dodder Greenway. Non statutory public consultation on this section is due to commence on Feb 8th 2024.

Quarterly meetings of the Dodder Steering Group, comprising officials and members of DLRCC, SDCC and DCC are ongoing.

### 6.3 Fitzwilliam Cycle Route

The Fitzwilliam Cycle Route scheme will deliver 1 kilometer of cycling facilities linking Leeson Street Lower and Adelaide Road to Merion Square. The Project also includes a refurbishment of the Adelaide Road Traffic Island. The tender competition and Final Business Case for the scheme has been completed and a preferred contractor identified. Funding for this project is currently unavailable.

### 6.4 Sandyford (Clonskeagh) to City Centre

The permanent scheme will deliver 3.1km of walking and cycling facilities, along Charlemont St., Ranelagh Road, Ranelagh, Sandford Road and Clonskeagh Road.

A non-statutory public consultation was held in Q1 2023. A total of 675 submissions were received via the online consultation hub by the closing date. Other submissions were made via email and at the Public Information Event on 7th February. A Public Consultation Report has been drafted and will be published on the DCC website.

For the proposed rapid build scheme, the preliminary design has been completed and submitted to the NTA for approval to proceed to detailed design stage. The preliminary design for a more extensive scheme will be completed by end December.

Engagement with local interests will continue including regarding accommodation for commercial vehicle loading on the scheme. An internal DCC consultation process is currently ongoing.

### 6.5 Trinity to Ballsbridge

The Trinity to Ballsbridge Walking & cycling route is to be delivered in two Phases:

- **Phase 1: Holles St to Lansdowne Road** along Mount Street Lower and Northumberland Road. Public Consultation for this Phase commenced on 19th September 2023 and closed on 20<sup>th</sup> October. Information leaflets were distributed in the local area during the Public Consultation period. A Public Consultation report is currently being prepared. More information, can be found on the Dublin City Council Public Consultation Hub at <https://consultation.dublincity.ie/>.
- **Phase 2: Dawson St to Holles Street** along Nassau Street, Clare Street and Merrion Square North. Public Consultation for Phase 2 will follow at a future date.

### 6.6 Grand Canal to Lincoln Place

Improved walking and cycling facilities are proposed for 1.3km from the Townsend St / Lombard St junction along Townsend St, Sandwith Street Lower, Sandwith Street Upper, Hogan Place and Grand Canal Street Upper as far as Clanwilliam Terrace. Also a section along Fenian Street from the junction with Sandwith Street Upper to the junction with Lincoln Place. Draft Preliminary designs have been prepared and internal consultation undertaken. The preliminary design on the project should go to Public Consultation in Q2 2024.

### 6.7 Chapelizod Road to Chapelizod ByPass

The Chapelizod Road to Chapelizod ByPass scheme will provide 3.3km of improved walking & cycling facilities from Parkgate Street at the Phoenix Park along Conyngham Road and Chapelizod Bypass to the boundary with South Dublin County Council. ATDO Consultants to be assigned the scheme and concept development and options selection to commence in 2024.

## **6.8 Chesterfield Avenue Project**

The Active Travel Programme office is working with the OPW to progress the Chesterfield Avenue Cycle Route along with other routes through the Phoenix Park. The Chesterfield Avenue Project involves the upgrade of walking and cycle facilities in the Phoenix Park between Castleknock and Conyngham Road / Parkgate Street in a manner that is in keeping with the vision for the park into the future.

The NTA has nominated their own national Active Travel Support Office to work with DCC to deliver the permanent Chesterfield Avenue Cycle Route. Design work is expected to begin in Q1 2024 and the emerging preferred option shared with stakeholders in Q3 2024.

## **6.9 Sir John Rogerson Quay Project**

The route options selection process and design work commenced for the Sir John Rogerson Quay Project in Q4 2022. The project is being led by the Docklands Office in collaboration with City Architects. The project objectives are to deliver a coherent, high-quality integrated public realm for the City that protects and enhances the existing national monument of the quay wall. The project will co-ordinate key infrastructure including active travel, flood defence, BusConnects link to Ringsend and the existing docking facility for sea vessels along the South Campshire in line with the DCC North Lotts and Grand Canal Dock SDZ.

The option selection process has drawn from information received during a non-statutory public consultation that was completed in November 2022. It is expected that a Part 8 Planning application will be submitted in Q2 2024.

## **6.10 Grand Canal Greenway (Blackhorse to Portobello)**

The Grand Canal Greenway (Blackhorse to Portobello) is currently at the Concept Development and Options Selection Phase. A Strategic Assessment Report was completed and submitted to the NTA in 2023.

The project is to be progressed in Q1 2024, with a Consultant to be appointed to develop the design including the updated requirements for Active Travel, biodiversity and tree retention. The project will also be updated to integrate a number of other major projects along the route such as the refurbishment of Portobello Harbour, BusConnects Core Bus Corridors, Dolphin House redevelopment and the ESB Networks high cable replacement projects.

## **6.11 Santry Greenway**

The route options selection process and design work commenced for the Santry River Greenway in July 2022. The project is being led by DCC's Water Framework Directive Office in collaboration with Fingal County Council with feed-in from AcTPrO. The route options are being reviewed following a series of public consultations events held in 2023. It is expected that an emerging preferred route will be identified in Q1 2024. A further public consultation process will follow to allow the local community and other stakeholders comment on the preferred route.

## **6.12 Finglas Village Improvement Scheme**

The Finglas Village Improvement Scheme is scheduled to go to non-statutory public consultation in February 2024 for a 5 week period. It is intended to brief the Northwest Area Committee members prior to consultation. Further updates on the consultation dates will be provided on the website [www.dublincity.ie/activetravel](http://www.dublincity.ie/activetravel)

## **6.13 Finglas Area Roundabouts Scheme**

On the Finglas Area Roundabouts Scheme, the Preliminary Design for the Jamestown Road Roundabout has been completed. The Project Appraisal and Business Case have been submitted to the NTA for



approval to proceed to detailed design. The AA and EIA screening reports have been completed. We are also coordinating with Fingal County Council on the requirement for a Section 85 agreement (*one LA performing for another*). It is expected that detailed design will be completed by Q2 2024, followed by the preparation of tender documents for the appointment of a contractor. Construction is to commence in 2024 subject to NTA approval and funding availability.

Approval to proceed is awaited from the NTA to proceed to detailed design/tender for McKee Avenue/St Margaret's Road/Lidl junction.

#### **6.14 Grangegorman to Portobello**

Work has now commenced on the Grangegorman to Portobello Active Travel Route; this is a cross city Active Travel Route which will link communities on the north and south side of the city via a new pedestrian and cycling bridge and regenerate the existing streets between Grangegorman and Portobello.

#### **6.15 North Circular Road**

The North Circular Road Project aims to provide high-quality segregated cycling facilities along a 5.5km route from Infirmary Road at the junction with Conyngham Road and Parkgate Street to Seville Place at the junction with Guild Street. The project will be delivered in five schemes and the Active Travel team are currently progressing with three as follows:

- **Dorset St Lwr. to Amiens St:** A Public Consultation Report for this scheme is expected to be published over the coming quarter, with design following. Consultants Jacobs have commenced detailed design on the project. Site surveys, tree surveys and road safety audit are underway at present.
- **Hanlon's Corner junction upgrade** A Public Consultation Report for this junction is expected to be published over the coming Quarter. The team are also procuring engineering design services to develop the detailed designs. A tender assessment is currently underway and it is expected that a Consultant will be appointed by the end of year.
- The **Seville Place** project aims to enhance the current cycling infrastructure of approximately 0.6km from the Five Lamps Junction on Amiens Street to Sheriff Street Upper, and connect with the Clontarf to City Centre scheme. The Options Selection process is being advanced currently. A Rapid Build Options Report has been prepared for the scheme in accordance with NTA requirements for this phase, and was submitted to the NTA in November 2023 with approval to proceed awaited.

#### **6.16 Cabra to Blanchardstown (Ratoath Road & Cappagh Rd)**

A tender was issued for the engagement of Consultants for the detailed design for Ratoath Road & Cappagh Road Rapid Build Scheme. The Consultants will also be commissioned to develop a concept design for a permanent scheme along Ratoath Road (Westwood to Ratoath Avenue). A tender assessment is currently underway and it is expected that a Consultant will be appointed in early 2024.

#### **6.17 Dalymount to Cabra Cross**

The Dalymount to Cabra Cross scheme will provide 1.5k of improved walking & cycling facilities from Cabra Road; from Cabra Cross (junction with the Navan Road) to Dalymount (junction with the North Circular Road). ATDO Consultants to be assigned the scheme and concept development and options selection to commence in 2024.

### **6.18 Coolock to Clontarf (Gracefield Rd, Brookwood Ave, Sybil Hill Rd & Vernon Ave)**

The Coolock to Clontarf walking and cycling route is 5.1km in length and is proposed to be delivered in three Phases:

- **Phase 1- Gracefield Rd to Vernon Avenue** along Gracefield Road, Brookwood Avenue, Sybil Hill Road and Vernon Ave.( 2.6km)  
The non-statutory Public Consultation for this phase of the route was carried out from 6th June to 31st July, 2023. A public information event was held in Artane Coolock Family Resource Centre on Tuesday 25th July, 2023 with over eighty persons attending. Over 800 submissions have been received. These are being reviewed and the Public Consultation Report is currently being prepared. Consultants Jacobs have commenced detailed design on the project. Traffic counts, Site surveys, tree surveys, road safety audit are underway at present.
- **Phase 2- Vernon Ave to Clontarf Rd** along Vernon Avenue terminating at the junction with Clontarf Road.
- **Phase 3- Artane Roundabout to Clonshaugh Road** from Artane Roundabout, along Ardlea Road, Kincora Rd, Oscar Traynnor Rd, Clonshaugh Rd.  
Consultants Jacobs to commence concept design on Phases 2 & Phase 3 in 2024.

### **6.19 Raheny to Kilbarrack (Howth Rd, from Station Rd to James Larkin Rd)**

The Active Travel team have prepared the Public Consultation Report and it is expected to be published over the coming Quarter. This project is to be assigned to Consultants for the Active Travel Design Office.

### **6.20 Bayside to Donaghmede (Kilbarrack Rd to Oscar Traynor Rd)**

A tender was issued for engagement of Consultants for the detailed design for the scheme along Kilbarrack Rd to Oscar Traynor Road in August 2023. The Tender Assessment is now complete. Consultants DBFL have been appointed to undertake the detailed design, procurement and construction Phases of the project

### **6.21 S2S Clontarf Baths**

Acquisition matters and other design assessments are being progressed.

## 7 Complete Project Table –

NTA Code	Project Name	Committee Area (s)	Length (km)	Additional Comments
DCC/12/0007	Royal Canal Greenway - Phase 3	Central Area (CA)	2.1	Update in item 5.2 of report
DCC/12/0008	Liffey Corridor	CA, SEA, SCA	5.6	
DCC/12/0008	Liffey Scheme ( Eden Quay)	Central Area (CA)	0.25	Update in item 5.6 of report
DCC/12/0008	Liffey Interim Scheme ( Georges Quay to Crampton Quay)	South East (SE)	0.8	Update in item 5.6 of report
DCC/12/0016	Finglas Village Improvement Scheme	North West (NW)	0.2	Update in item 6.12 of report
DCC/12/0024	Grand Canal (Blackhorse to Portobello)	SC, SE	4.5	Update in item 6.11 of report
DCC/12/0025	Heuston To Chapelizod	South Central (SC)	6.6	
DCC/12/0033	Clontarf to City Centre	CA, NCA	3	Update in item 5.1 of report
DCC/12/0035	Dodder River Greenway	South East (SE)	5.2	Update in item 6.2 of report
DCC/13/0014	Royal Canal Greenway - Phase 4	Central Area (CA)	5.2	Update in item 6.1 of report
DCC/14/0001	Sandymount (Clonskeagh) to Charlemont Street	South East (SE)	3.2	Update in item 6.4 of report
DCC/17/0008	Fitzwilliam Street Cycle Route	South East (SE)	0.9	Update in item 6.3 of report
DCC/18/0001	Dodder Greenway - Herbert Park to Donnybrook Road	South East (SE)	0.5	Update in item 5.3 of report
DCC/18/0009	South Grand Canal Cycle Safety Improvements	South East (SE)	2.2	Update in item 5.4 of report
DCC/19/0002	East Coast Trail - Alfie Byrne Road to Sheriff Street	Central Area (CA)	1.5	Update in item 5.5 of report

DCC/19/0003	East Coast Trail - Sean More Road to Merrion Gate	South East (SE)	2.7	
DCC/19/0006	Finglas Area Roundabouts Scheme	North West (NW)	0.1	Update in item 6.13 of report
DCC/19/0008	Grangegorman to Portobello	CA, SE	2.9	Update in item 6.14 of report
DCC/21/0001	Finglas to Killester	NC, NW	9.5	
DCC/21/0002	Parnell Street to Prussia Street	Central Area (CA)	2.4	
DCC/21/0003	Bolton Street to Parliament Street	Central Area (CA)	1.2	
DCC/21/0004	Amiens Street to Georges City Quay	CA, SE	0.8	
DCC/21/0005	Prospect Way	Central Area (CA)	0.1	
DCC/21/0006	Chapelizod Road to Chapelizod Bypass	South Central (SC)	4.8	Update in item 6.7 of report
DCC/21/0007	Kilmainham to Thomas Street	South Central (SC)	2.6	Update in item 5.7 of report
DCC/21/0008	The Coombe to College Green Cycle	SC, SE	2.2	
DCC/21/0009	Coolock to Clontarf	North Central (NC)	2.5	Update in item 6.18 of report
DCC/21/0011	Santry River Greenway	North Central (NC)	7	Update in item 6.11 of report
DCC/21/0012	Nass Road to Inchicore	South Central (SC)	2.1	
DCC/21/0013	Harcourt to South William Street	South East (SE)	1.2	
DCC/21/0014	Grangegorman to Thomas Street	CA, SCA	1.9	
DCC/21/0015	Grand Canal to Liffey	South East (SE)	0.8	
DCC/21/0016	Grand Canal to Lincoln Place	South East (SE)	1.8	Update in item 6.6 of report
DCC/21/0017	Ringsend to College Green	South East (SE)	3.6	
DCC/21/0018	Stephens Green to Thomas Street	SC, SE	3.1	
DCC/21/0019	Raheny to Kilbarrack	North Central (NC)	1.7	Update in item 6.6 of report
DCC/21/0020	North Circular Road	Central Area (CA)	3.3	Update in item 6.15 of report
DCC/21/0021	Fairview To Parnell Street	C, NC	2.6	

DCC/21/0022	Rathmines To Milltown	South East (SE)	1.7	
DCC/21/0023	Baldoyle to Fairview	North Central (NC)	6.8	
DCC/21/0024	Wicklow Street to College Green	South East (SE)	0.1	
DCC/21/0025	Camac Greenway	South Central (SC)	4.3	
DCC/21/0026	Tolka River Greenway	CA, NCA	4.1	
DCC/21/0027	Harolds Cross to Ballymount	South East (SE)	2.1	
DCC/21/0028	Cabra to Blanchardstown	CA, NW	5.1	Update in Item 6.16 of report
DCC/21/0029	Chesterfield Avenue to Farmleigh	Central Area (CA)	6.7	Update in item 6.8 of report
DCC/21/0030	Chesterfield Avenue	Central Area (CA)	4.2	Update in item 6.8 of report
DCC/21/0031	Bayside to Northside	North Central (NC)	6.8	Update in item 6.20 of report
DCC/22/0001	Access Improvement Measures Public Parks	Citywide		
DCC/22/0002	Walking and Cycling Improvement Measures in Public Parks	Citywide		
DCC/22/0003	Sir John Rogersons Quay	South East (SE)	0.5	Update in item 6.9 of report
DCC/22/0004	Clontarf Baths Active Travel Elements	North Central (NC)	0.1	Update in item 6.21 of report
DCC/22/0011	Donahies to Clonshaugh	North Central (NC)	4	
DCC/22/0012	Clarehall to Belmayne	North Central (NC)	2.4	
DCC/22/0013	Dollymount to Kilbarack	North Central (NC)	3.4	
DCC/22/0014	Whitehall to Artane	North Central (NC)	2.8	
DCC/22/0015	Beaumont Hospital Link	North Central (NC)	1.7	
DCC/22/0016	Dalymount to Cabra Cross	Central Area (CA)	1.5	Update in item 6.17 of report
DCC/22/0017	Eden Quay to Dorset Street	Central Area (CA)	1.6	
DCC/22/0018	East Wall to North Wall	Central Area (CA)	1.5	
DCC/22/0019	Chapelizod to Walkinstown	South Central (SC)	4.4	
DCC/22/0020	Terenure to Kimmage	South East (SE)	1.7	

DCC/22/0021	Rathgar to Ranelagh	South East (SE)	2.7	
DCC/22/0022	Kilmainham to Ballsbridge South City Loop	SC, SE	7	
DCC/22/0023	Donnybrook to UCD	South East (SE)	0.4	
DCC/22/0024	City Quay to Harcourt Street ( Merrion Sq West)	South East (SE)	1	
DCC/22/0025	Trinity to Ballsbridge	South East (SE)	2.2	Update in item 6.5 of report
DCC/22/0026	Mercer Street to Fitzwilliam Street	South East (SE)	1.1	
DCC/22/0027	Christchurch to George's Street	South East (SE)	0.6	
DCC/22/0028	Parnell Square to College Green	CA, SE	1.1	
DCC/22/0029	Stephens Green to Patrick Street	South East (SE)	0.7	
DCC/22/0030	Royal Canal Bank to Dorset Street	Central Area (CA)	0.6	
DCC/22/0031	Finglas Road to Finglas Village	North West (NW)	0.4	
DCC/22/0032	Santry to Poppintree	NC, NW	3.7	

## 8 Communications

AcTPrO works to provide clear, concise and accurate information to all project stakeholders including residents, businesses and all transport users on the delivery of the Active Travel Network. This is to ensure transparency and that individual projects are completed in a timely fashion. AcTPrO carries out communications to ensure stakeholders have access to regular updates on the status and progress of projects.

The AcTPrO communications plan uses a number of different channels to maximise delivery of the project messaging.

This quarter:

- AcTPrO continues to grow and update [DCC Active Travel Alerts](#), a free notification service that individuals can subscribe to and receive useful and important updates on current Active Travel projects. There are currently 800 approx. subscribers.
- All public consultation material is on the Dublin City Council Consultation Hub: <https://consultation.dublincity.ie/>.
- Project information is also available on the Dublin City Council website: [www.dublincity.ie/activetravel](http://www.dublincity.ie/activetravel). This is used to update project progress, provide further details on specific designs using maps, drawings, artist impressions, etc. and communicate different elements of the project. A section on how to contact the project team is also available. The team continues to operate a process for ensuring project webpages are regularly updated.
- AcTPrO maintains an active social media presence on DCC social media channels using the hashtags #activetravelnetwork and #climateaction, posting on average nine times per week. The team has accelerated its use of LinkedIn, in combination with Facebook, X and Instagram.

### Internal Communications:

AcTPrO has worked to enhance its internal communications across DCC through measures including:

- Addressing colleagues at the Dublin City Transformation Week 'Forward Together' event, to share our vision and raise internal awareness of the Active Travel Network.
- Addressing Councillors & colleagues at our Comms NCAC briefing presentation, reporting on Network status for the NCA.
- Launching its own departmental page on the DCC Citidesk platform.

### Information Campaigns:

- AcTPrO is developing **Public Information Campaigns** covering specific features of the Clontarf to City Centre project, to be launched early next year.
- The team is also in the process of developing a **Behaviour Change Campaign**, in response to Councillor O'Farrell's Motion at the June North Central Area Committee, including an amendment from Councillor Gilliland. This campaign is aimed at improving safety and the perception of safety for people, particularly vulnerable road users, who actively travel around the city, to encourage people to choose active travel options and progress essential modal shift.
  - ✓ An externally facilitated Behaviour Change Campaign Workshop examining some of the issues and potential solutions was carried out in October.
  - ✓ Next step is to commission a service provider to design the campaign based on the brief we have developed, to be launched next summer.

During the quarter the multi-disciplinary team within AcTPrO had the official opening of our new permanent staff accommodation at Cavendish House on Arran Quay.



Image 10. Active Travel Office, December 2023

New postal address:

Active Travel Programme Office,  
Dublin City Council,  
Cavendish House,  
Block D, Arran Court,  
Arran Quay,  
Dublin,  
Ireland.  
D07 H5CH

Phone: 01 222 2356

Email: [activetraveloffice@dublincity.ie](mailto:activetraveloffice@dublincity.ie)

---

**Andy G. Walsh**  
Director for the Active Travel Programme

---

**John W. Flanagan**  
Assistant Chief Executive & City Engineer

**18<sup>th</sup> December 2023**