



Where Does Your Water Come From?

Info
Sheet
02

Introduction

Whenever we turn on a tap in our homes or at school, out comes clean, drinkable water. But how does it get there? All water comes from the three main forms of precipitation; rain, hail or snow. Some rainfall will evaporate soon after it falls, while the rest will either run off the ground to join streams and rivers, or will seep through the ground to join underground water supplies. Depending on where you live, water is drawn either from **surface water** sources like lakes and rivers, or from **groundwater** wells.

Surface Water

*Did you know
that most
drinking water
in Ireland
is supplied by
surface water?*

Surface water is collected from roofs and paved areas as well as streams, rivers, lakes and reservoirs. Building a dam or barrier across a river creates reservoirs. This blocks the water at that point and allows it to collect behind the dam. A certain amount of water is always released from the reservoir to maintain the river at an acceptable flow. Reservoirs are located in upland areas because this is where most of the rain falls.

Groundwater

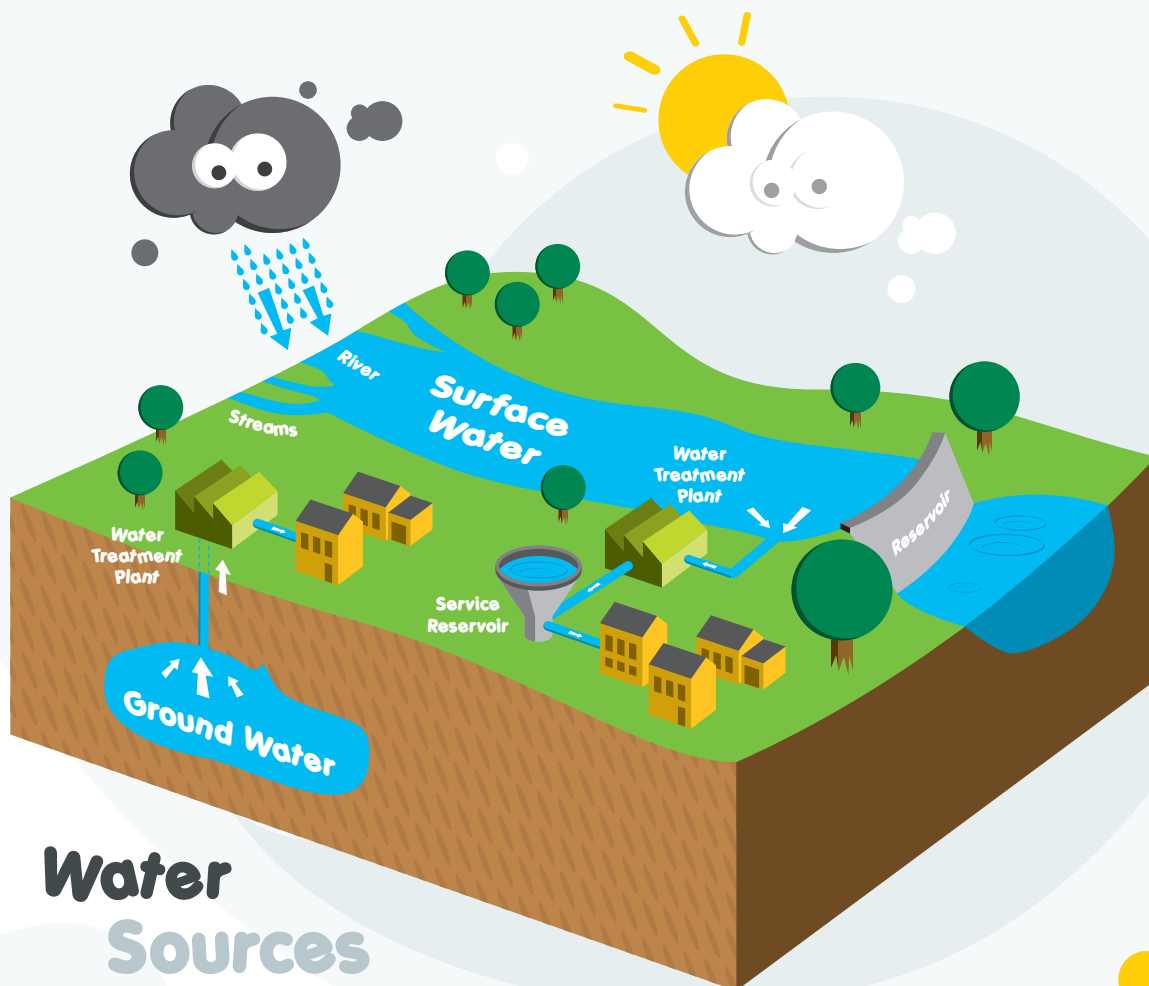
In some places water soaks into the ground and settles in large areas of porous rock. They are called aquifers. Whenever water is needed in these places we drill down into the aquifers and pump it out.

Groundwater may also emerge in the form of a spring. A few remote villages, which are not connected to the water distribution system often rely on springs to supply their water. This water is usually of good quality.

Water in Dublin

Water is supplied to Dublin on a Regional basis. The region includes all of Dublin City and County and parts of Wicklow and Kildare. Most of the water supplied is from surface water sources. Over one million people are served by water treatment plants run by Dublin City Council on the River Liffey at Ballymore Eustace, on the River Vartry at Roundwood and on the River Dodder at Ballyboden and by the treatment plants under the control of Fingal County Council on the River Liffey at Leixlip and at a groundwater source at the “Bog of the Ring”.

**Why not follow the path of your drinking water from source to sea?
Where is it treated? Does it have to travel far to get to your home or
school? What happens to the water after you have used it?**



Water Sources