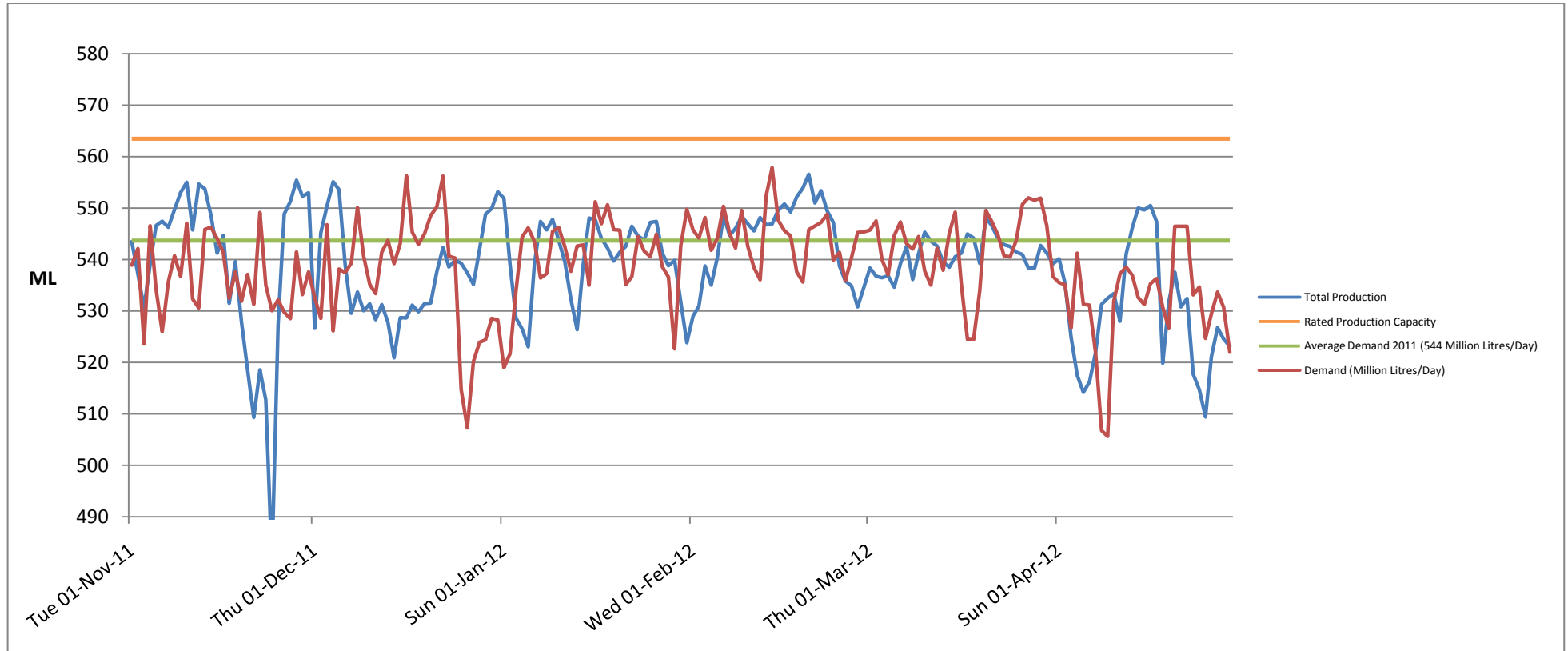


Demand for Drinking Water Dublin Region



❖ *Average Daily Demand for week-ending 29/04/2012 was 530MI/day. The Average Daily Demand for the year has been 540MI/day.*

❖ *Target average Daily Demand for 2012 is 544MI/day.*

❖ *This will be achieved by a combination of measures, including*

- Leakage Reduction by Local Authorities,
- Private-side Leakage Reduction by Consumers, and
- Water Conservation Measures by all