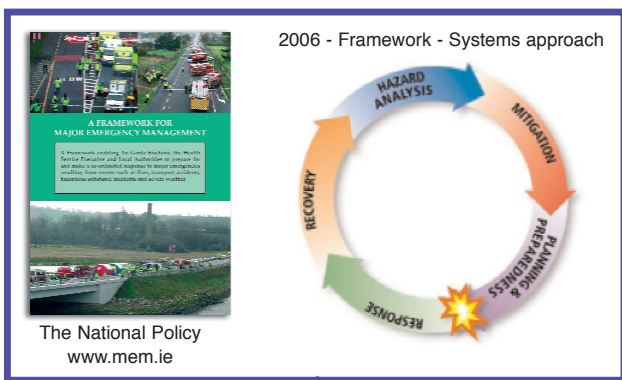


# Emergency Management

## Definition of a Major Emergency

A Major Emergency is any event which, usually with little or no warning, causes or threatens death or injury, serious disruption of essential services or damage to property, the environment or infrastructure **beyond the normal capabilities of the principal emergency services** in the area in which the event occurs, and requires the activation of specific additional procedures and the mobilisation of additional resources to ensure an effective, co-ordinated response.



Interagency joint working, Dublin City Council, Fire Brigade, Gardai, etc.



Framework

DCC Major Emergency Plan (MEP)  
September 2008

First major update of DCC MEP  
October 2010



Flooding - Liffey Boardwalk - February 2002



Flooding on Clontarf Road - February 2002



Staff from Drainage Services clearing snow from the footways in Temple bar



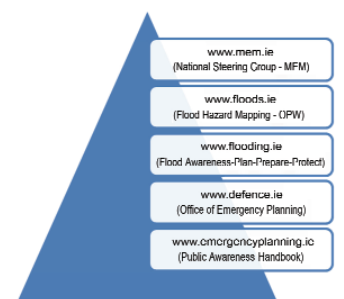
Staff from Water Division (Inspector Christy Bennett, Norman Curley and Richie Luby) helping Saint Agnes School, Crumlin fill its water tanks during the cold snap of January 2011, with the aid of Water Division fire tender



Protection from tidal flooding in Sandymount



Paul Nolan, Road Superintendent, Marrowbone Lane and Martin Devine, Machine Operator, treating the Road surfaces during the freeze of Christmas Season 2009/2010.



Websites