

Roads

What Road Maintenance do

- Maintain 1,200km of roads, streets and associated footpaths.
- Capital projects on carriageway resurfacing and re-alignment.
- Planned footway and carriageway reconstruction and maintenance.
- Pavement construction and entrance dishings.
- Reactive maintenance arising from public complaints.
- Provision and maintenance of street nameplates.
- Winter maintenance programme - gritting along national primary, secondary, regional routes and bus lanes.
- Management, control and reinstatement of up to 60,000m² of road openings each year by internal departments and external utilities.
- Inspection and assessment for taking in charge of new residential and industrial developments in accordance with road maintenance standards.
- Management and licencing of street furniture, restaurant tables.

How they do It

- Direct Labour staff of 150 personnel.
- Procurement and management of contracts for services, construction works and materials.
- 24 hour emergency response as requested by Emergency Services.
- Using smart systems to track road openings and licences such as Roadworks Control on-line extra net.



South Circular Road before resurfacing



Oldtown Avenue footpath before repair



Shanliss Road footpath before repair



South Circular Road after resurfacing



Oldtown Avenue footpath after repair



Shanliss Road footpath after repair



Reconstruction and overlay - Custom House Quay



Paving outside City Hall

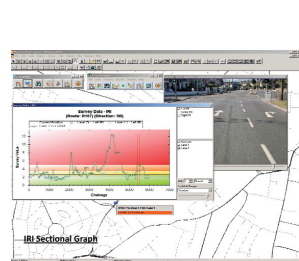


Gritting crew - Collins Avenue Depot

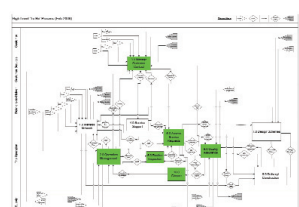
The Future

Transportation Asset Management System (TAMS)

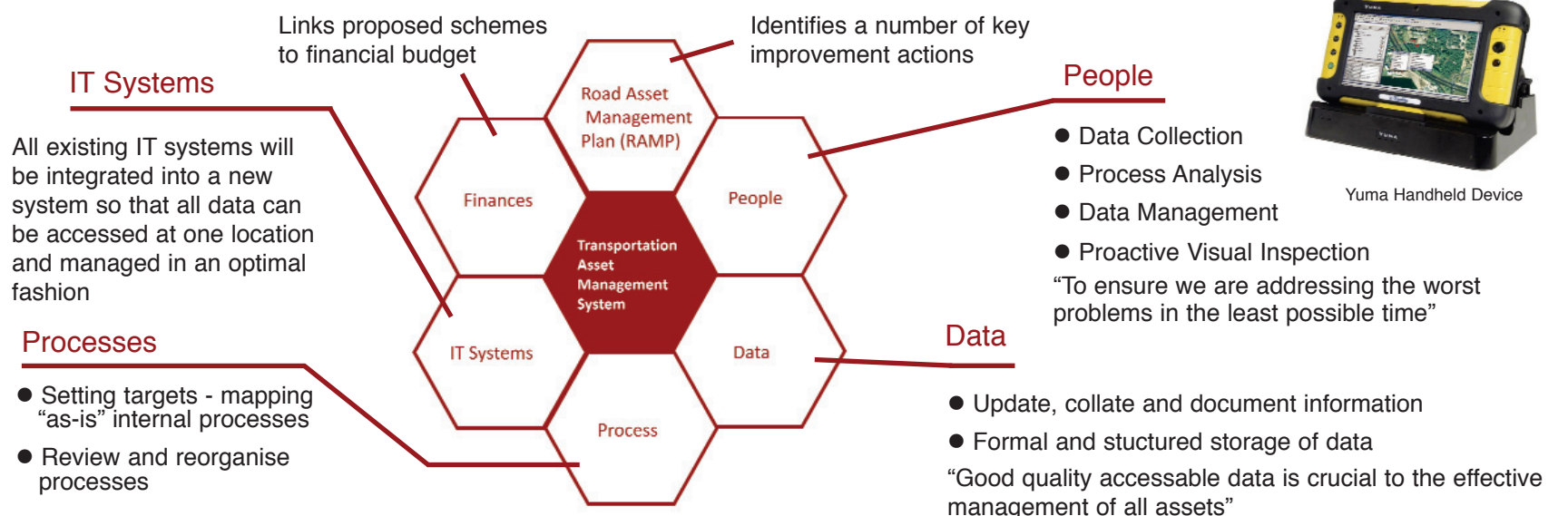
Asset Management is about identifying where best to assign resources, taking current and future needs into consideration. The Roads and Traffic Department decided to implement an Asset Management System to ensure the provision of the best possible level of service. Asset management consists of six supporting elements described below:



MapRoad system screenshot



Process Maps



Yuma Handheld Device