

Table of Contents	Page
Introduction	3
Background to Implementation Plan	4
Complaints Procedure	5
Access Unit	7
Approach to Implementation	8
Relationship Diagram of departments involved	9
Budget and Training	10
Disabled Go	12
Access Auditing	13
Public Consultation	15
Framework Implementation Plan	16
• Appendix 1 – Public Consultation	19
• Appendix 2 – Buildings	23
• Appendix 3 – Parks	37
• Appendix 4 – Roads, Streets, Pavements & Pedestrian Crossings	47
• Appendix 5 - Disability Stakeholder List	61
• Appendix 6 – Complaints Procedure	63

Dublin City Council Framework Implementation Plan Disability Act 2005.

Introduction

The purpose of this framework implementation plan is to set out how Dublin City Council proposes to make universal accessibility a reality within the City area, within the period specified by the Disability Act 2005¹.

The objectives of this plan are to:

- Address the correction of deficits in the current accessibility of City Council services, parks, buildings, facilities, and within the public realm (streets & roads) of the city, which the Council is statutorily responsible for.
- Lead & facilitate a citywide drive to create Dublin as the most accessible city in Europe, through changing the public and private realm, and realising the aims of the Barcelona Declaration².
- Ensure through training and by creating and raising awareness of disability issues the development of good practice in staff support, planning of services, and active citizen engagement.

Under part 3 of the Disability Act 2005 and the Sectoral Plan of the Dept. of Environment, Culture and Local Government all local authorities are required to develop Implementation Plans setting out how they will improve accessibility for all citizens using public parks, buildings, roads, streets, pavements and pedestrian crossings. The National Disability Strategy committed the state to provide a multi-annual financial package for work to be carried out by local authorities to meet the requirements of the Disability Act 2005 and the Sectoral Plan.

¹ For more information on the Disability Act 2005 please turn to page 5.

² For more information on the Barcelona Declaration please turn to page 4.

Background to Framework Implementation Plan.

The National Disability Authority states that everyone experiences a disability at some point in our lives. Disability is part of everyday experience. The common assumption that a person with a disability equals "wheelchair user" is inaccurate. Local authorities have a responsibility to ensure that the function of our built environment is to *enable*. A more inclusive approach is to think in terms of the *Universal* right of access and to seek to improve accessibility and usability for everyone. The principle of **universal access** ensures that people who have a disability can participate fully in society. The local authority has an immensely important role, both as a building control authority and in its development and maintenance of the external environment. In recent years there have been improvements in ensuring access for people with disabilities, for example kerb dishing at road crossings is now mandatory and audible pedestrian crossing signals are common.

The Barcelona Declaration (1995) facilitates local authorities in dealing with disability in a structured and integrated manner. In fulfilling the Declaration's agreements each local authority undertakes to raise disability awareness and to engage in a consultative process with disabled people in implementing plans and actions. In March of 1995 a European Congress "The City and the Disabled" was hosted in Barcelona. The outcome of the Congress was a manifesto known as the Barcelona Declaration signed by delegates representing many cities and towns in Europe. The Declaration advocates the right of disabled people to equal opportunities and recognises their contribution to the society and the environment they live in. In essence, the Declaration promotes the fact that "Every person has a value and the right to be treated with dignity." On a practical level, this translates into the facilitation of structures at local government level that remove disabling barriers preventing people with disabilities from functioning and participating in society.

The Barcelona Declaration 1995 "The City and the Disabled" was signed by the Lord Mayor of Dublin in 1999. A part time Access Officer was appointed in mid 1999. This became full time in February 2003. The role of the Access Officer was to facilitate & lead the implementation of the Barcelona Declaration in Dublin City and to raise awareness of disability issues within Dublin City Council. Since the Disability Act 2005 the role of the Access Officer has been given statutory sanction and the role now extends to ensuring that the Council meets the requirements of the Act.

Steps towards a Framework Implementation Plan

This section provides a snapshot into the lead up to the production of the framework implementation plan. It illustrates the role of the Disability Act 2005, the Sectoral Plan 2006, the role of the City Manager, the Access Unit and the Access Officer. It also illustrates the various instruments and departments that are involved in delivering the plan, and highlights the approach to facilitating a management steering group, awareness raising, training of front line, specialised, and managerial staff, public consultation and the roll out of the access audits.

Disability Act 2005.

The Disability Act (2005) requires public bodies to ensure that by 2015 buildings and services are accessible to people with disabilities. It places an obligation on local authorities to integrate disability service provision with mainstream services, where this is practical and appropriate. The Disability Act (2005) defines disability as:

“disability, in relation to a person, means a substantial restriction in the capacity of the person to carry on a profession, business or occupation in the State or to participate in social or cultural life in the State by reason of an enduring physical, sensory, mental health or intellectual impairment”.

Key elements of the Act:

Appointment of an Access Officer: The City Manager has appointed an Access Officer to help meet City Council’s obligations under the Act. The Access Officer role is to provide and co-ordinate the provision of assistance and guidance to persons with disabilities in accessing the services of Dublin City Council.

Complaints Procedure³: Dublin City Council has established a step-by-step complaints procedure as required by Section 39 of the Disability Act and has appointed an Inquiry Officer to help deal with complaints in relation to Dublin City Council and its responsibilities under the Act. In an innovative use of technology the public can also raise issues and comment on any road, park or building in the city on-line at www.accessdublin.ie. This web site is expected to be available by 15th March 2008. These comments/submissions will be logged by the Access Unit and will be forwarded to the relevant department. Other comments/submissions or queries can also be e-mailed to audit@accessdublin.ie.

³ For more information on Complaints Procedure please see Appendix 6

New Dublin City Council Services, Buildings & Roads: Dublin City Council will ensure that any new services, built facilities, or new roads, footpaths, pedestrian crossings, parks & open spaces provided, are accessible to people with disabilities. To ensure universal accessibility, all new projects will, prior to commencement of works, be proofed against the best practice guidelines issued by the National Disability Authority.

The Sectoral Plan 2006.

The Sectoral Plan of the Department of the Environment, Heritage & Local Government 2006 sets out national objectives and guidelines for access to local authority services and built facilities. Each local authority is required to draw up an Implementation Plan within nine months of the statutory approval of the Disability Act Sectoral Plan on the basis of a detailed accessibility audit of the local authorities' public buildings, parks, amenities, open spaces etc. The Implementation Plan is to set out a programme of actions to give effect to the commitments and objectives contained in the Act and the Sectoral Plan. The key objectives of the Sectoral Plan are:

- to promote universal access to public spaces, buildings and services owned and operated by the local authority
- to promote universal access to heritage sites
- to ensure access to information on services for persons with disabilities
- to review and update standards set out in Part M of the national Building Regulations
- to improve mobility access of persons with disabilities to all local authority public officers and local amenities
- to promote and ensure participation by persons with disabilities in decision-making
- to ensure a high level of awareness among staff in regard to the requirements of persons with disabilities
- to encourage and facilitate access to appropriate housing for persons with disabilities

City Development Board:

The role of the City Development Board is to co-ordinate and integrate local & citywide services for people with disabilities. The City Development Board do this through their Social Inclusion Measures Group, and through the support of their member agencies.

The Access Unit

The role of the Access Unit in Dublin City Council is to oversee and ensure that the relevant City Council departments are meeting their responsibilities under the Disability Act 2005. Their role is to ensure that City Council roads, footpaths, pedestrian crossings, parks, open spaces, and buildings are universally accessible by 2015, while allowing civic participation in the decision making process through public consultation. The Access Unit is also responsible for the training of frontline and specialised staff in disability issues and the raising of awareness amongst the general public of disability issues.



Approach to Implementation

Technical Implementation Committee:

An Implementation Committee was set up within Dublin City Council in May 2005. This was mainly a technical committee made up of representatives from City Architect's Dept, Parks Dept, Traffic Section, Planning Department and was chaired by the Access Officer. This Committee prepared a report in November 2005 detailing City Council's responsibilities under the proposed Act and the actions required to meet these responsibilities.

Management Direction and Co-ordination:

In January 2006, to meet with the requirements of the 2005 Act and the Sectoral Plan, a senior management co-ordination group was established. The Committee consists of Executive Managers from different City Council departments including Roads & Traffic, Culture Recreation & Amenity, Housing, City Architects, Libraries, Human Resources, IS Department & Engineering, and also the Access Officer and the Training Manager. This Group is responsible for the co-ordination of Dublin City Council's actions in implementing the requirements of the Disability Act and is co-ordinated by the executive manager, Office of International Relations and Research in Corporate Services.

Delivery of Dublin City Council's Commitments under the Disability Act 2005

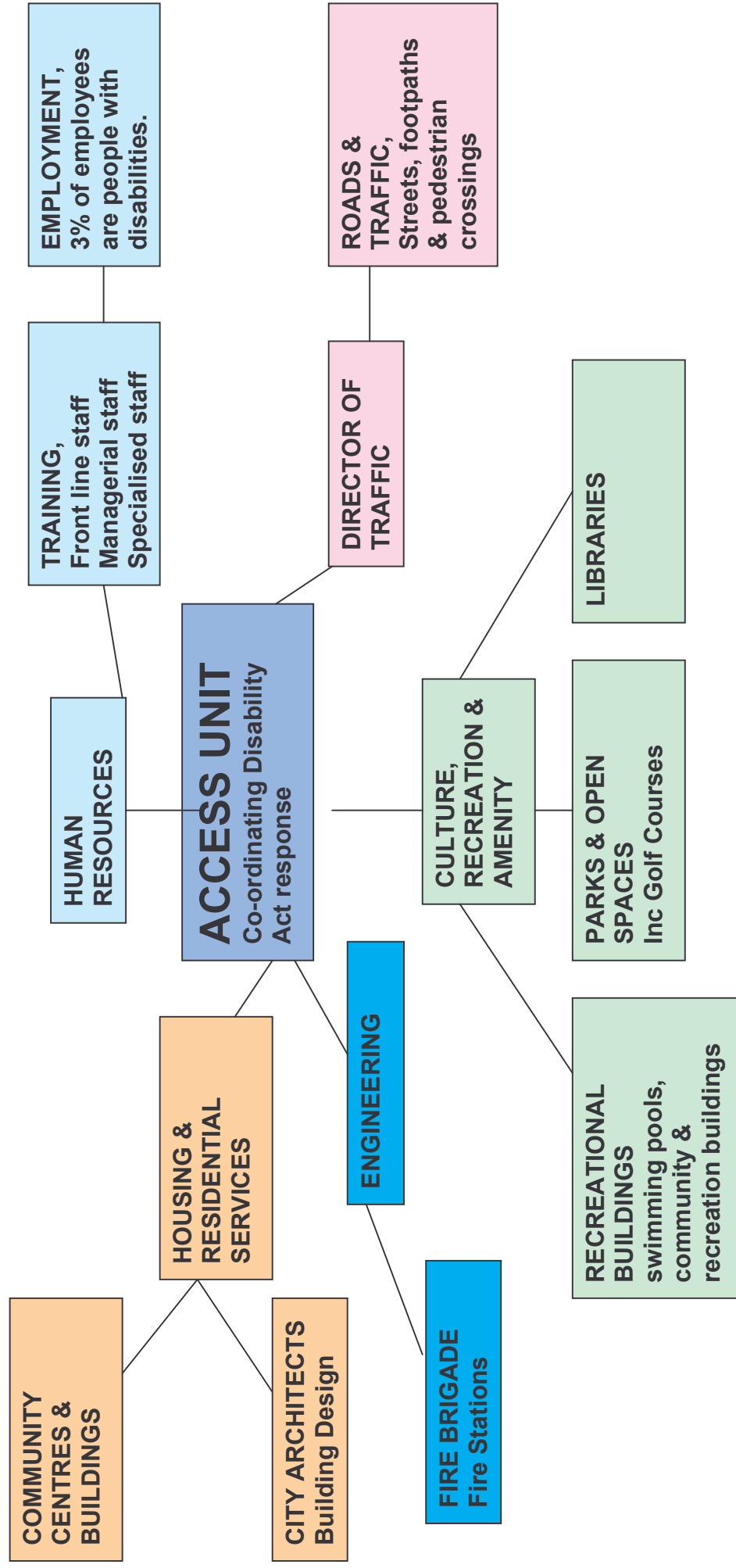
Responsibilities of the City Manager under the Disability Act 2005.

- Ensure that provision of access to a service by persons with and persons without disabilities is integrated.
- Provide assistance, if requested, to persons with disabilities in accessing a service.
- Appoint an Access Officer.

Responsibilities of the City Manager Under the Sectoral Plan.

- Prepare a yearly progress report on the City Council's performance in meeting the targets set out in the Implementation Plan. This report is to be included in the Annual Report for adoption by Council's elected members.

Diagram illustrating the relationship of the various departments involved in delivering Dublin City Council's responsibilities under the Disability Act 2005 and co-ordinated by the Access Unit.



Budget

The following budget has been allocated by the City Manager for the first 3 years of the plan:

	2008	2009	2010
Roads	€3,400,000	€1,000,000	€1,000,000
Parks	€1,100,000	€900,000	€900,000
Buildings	€2,900,000	€2,100,000	€1,700,000

Disability Stakeholder Organisations:

The Access Officer regularly meets with and updates the Disability Stakeholders in the City, (see appendix 5). Stakeholder groups and organisations are updated on a regular basis on progress with access audits and implementation and have been asked to be part of the consultation process (see below)

Training, Communication and Awareness Raising.

It is the aim of the Access Unit to provide training to technical staff in Dublin City Council and to raise awareness of staff in general of disability issues.

To meet this aim the following courses have been arranged:

- University of Ulster Access Auditor training has been provided to 23 City Architect's staff, 2 Planners, 7 Building Surveyors and 2 Parks staff.
- TMS Consultancy has provided training to 22 traffic engineers.
- Senior Management training seminar completed end of June 2006.
- Executive Manager & Departmental briefings were carried out over Summer 2006.
- Disability awareness training for 185 front line staff was carried out in 2007.

Further Training:

- Awareness training Front line staff: 400 staff to be trained in 2008
- Technical staff training (LGMSB): 80 staff to be trained in 2008.

Communication:

- Access Matters magazine has been produced to keep the public informed of developments and will continue to be produced on a quarterly basis.
- A Web site is being set up which can be used by the public to view the results of the access audits, the implementation plan, any future designs/plans and the Dublin City Access Guide. Here, the public can make a comments, submission or complaint about any Disability issue make comments on disability issues via the website. The web address is www.accessdublin.ie.



Disabled Go

Access Guide to private/commercial premises used by the public.

Disabled Go are a UK based social enterprise that provides very fine-grained disabled access guides to towns and cities across the British Isles including Belfast, London, Liverpool, Edinburgh, and Glasgow. Dublin City Council has commissioned Disabled Go to make Dublin a part of this international network of European capital and major cities taking part in this access mission. The access guides will be published on our Internet website www.accessdublin.ie and will be available in hard copy. The access guides will be available in early October 2008.

The benefits

Disabled Go will be sending their trained disabled-access surveyors to visit and assess sites that are used by everybody in the city on a daily basis, for example pubs, clubs, restaurants, cinemas, sports/leisure centres to post offices, banks, train stations, airports and much more. The surveyors also consult with people as to what venues they would like to see in their guide. This access guide empowers people with disabilities to function as independent individuals, allowing them to make up their own minds on what they would like to do and where they would like to go on any given day. They will be able to make these decisions by pre-viewing the level of access they are likely to encounter at a particular venue.

This initiative will help improve Social Inclusion and is part of Dublin City Council's commitments under the Barcelona Declaration.

Access Auditing

The audit process began with the setting up of a framework agreement in July 2006 for auditors. Audits were required for 128 Buildings, 137 Parks, 1200 km of Roads & Streets and 20 Bring Centres.

Position to date:

Parks:

Substantially completed end April 2007.

Buildings:

Substantially completed end Sept 2007.

Roads & Streets:

Audits completed in draft form end November 2007. Checking by Traffic Dept. to be completed end Feb 2008.



The main points to arise from the access audit process are:

Buildings:

- Access ramps not provided.
- Accessible toilets not provided.
- Insufficient colour contrast to identify doors, columns, stairs and signs.
- Poor signage design and location.
- Absence of wayfinding system.

Parks:

- Poor directional signage on approach routes.
- Lack of sufficient drop off points and wheelchair accessible parking spaces.
- Lack of adequate handrails, contrasting step nosings and tactile warning surface to external steps.
- Access ramps not provided.
- Inadequate bench seating.
- Some pathways require resurfacing or repaving.

Roads:

- Controlled & Uncontrolled crossings
 - poor tactile paving,
 - many instances of crossings without dished kerbs
 - Gradient at crossings can be too steep
- Obstructions / Restrictions – advertising boards, bicycles, plants etc.
- Parking – No dropped kerbs, poor signage, and regular misuse of accessible parking bays
- Overgrowth & Low height items – trees, hedges, and various signs
- Signage – need bigger font, signs to be at the right height, they need to be legible. Also signs have been damaged by vandalism & weathering.

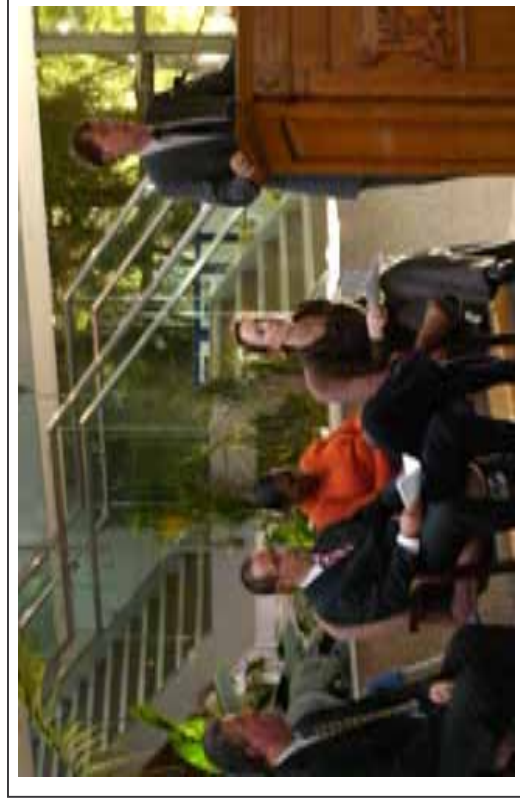
Public Consultation.

Dublin City Council has adopted a format for the delivery of consultations with the public around developing its implementation plan, (Please see attached Appendix 1). With roads, parks and buildings, Dublin City Council has delivered the consultation process in two stages, one, on the outcomes of the access audits and the development of the implementation plan, and two, on the proposed implementation plan itself.

The outcomes of the consultation process will be documented into a report, which will require a response from the relevant DCC departments, which will be made public. The outcomes of the consultation process were used to develop this Implementation Plan, which will also be consulted on.

DCC has a number of consultation forums in place, including, the Disability Focus Group which is under the auspices of the Community Forum, our own consultation panel which is made up of 40 interested members of the public, and a list of the relevant stakeholders in Dublin City.

In Dublin City Council a Disability Steering Group Committee made up of senior managers from the relevant departments has been established to oversee the delivery of the Council's responsibilities under the Disability Act 2005. The members of this committee will oversee the drawing up a scope of works plan for the forthcoming years, which will form this Implementation Plan.



Framework Implementation Plan

The City Framework Implementation Plan is a high level and strategic plan designed to deliver within budget and time constraints on the requirements for remedial and corrective works under the 2005 Disability Act and the relevant sectoral plan. The Framework Plan would be supported by bi – annual operational plans prepared by the relevant Departments and approved by the senior management steering Group.

Principles

1. The **City Framework Implementation Plan** is organised through the division of the city into **annual areas of priority attention**. The areas are generally based on DEDs and straddle at least two Area Committees.
2. All buildings, parks and streets within the annual areas of priority attention will be listed for remedial /corrective works. That list will be amended and prioritised by the relevant Departments (Roads & Parks) or in the case of buildings by the building “owner” and city architects. The amended list will form the basis of the **bi-annual plan of delivery**. Guidelines covering prioritisation and amendment are included in point 6 below.
3. The **bi-annual plan of delivery** will be completed and agreed normally by the end of October on a rolling basis and submitted by the 30th of October for the approval by the senior management steering group. The plan for 2008 & 2009 has been circulated to relevant local managers for approval. Thereafter Plans will be submitted as follows:
 - 2009 (amended) & 2010 by 30th Oct 2008
 - 2010 (amended) & 2011 by 30th Oct 2009
 - 2011 (amended) & 2012 by 30th Oct 2010
 - 2012 (amended) & 2013 by 30th Oct 2011
 - 2013 (amended) & 2014 by 30th Oct 2012
 - 2014 (amended) by 30th Oct 2013
4. From 2008 onwards the approved **bi-annual Plan of delivery** will be submitted annually to the DOEHLG by Nov. 20th each year. This will also be presented to City Councillors in the relevant Area Committees at the first meeting of such Area Committees in the year following Plan approval. Area Management will be asked to monitor the delivery of planned actions in their area and to report with support from the relevant operational departments on a quarterly basis to the Area Committee

- 5. In respect of roads and streets** the responsible Department will be asked to provide a seamless integration of work into their ongoing maintenance work. This will involve treating all planned maintenance as “new work” within the targeted areas and ensuring that the work is done to the standards set by the audits. The special capital funds allocated for remedial/corrective work will therefore only be applied to streets or roads on which major maintenance work is not anticipated within the next seven years. If no such areas exist within the area targeted annually Streets and Roads may nominate for inclusion in the annual operational plan a street/road segment outside of such targeted areas.
- 6. All relevant departments, Area Management and building owners** are expected to provide in writing amendments to the City Framework Implementation Plan by April 21st 2008. This should be done on the basis of identifying for all facilities under their management:
- A relocation of specific work into another targeted year if it is known that work is planned in that facility or location for a future year. This should be considered new work and therefore not drawn of the corrective work capital funds. In planning this new work it should be planned to meet audit requirements and full accessibility. Capital costs should be included in normal departmental estimates.
 - A prioritisation of work based on public fallout, critical correction, budget costs and public perception. Where possible if correction works are minor they should be assumed into ongoing maintenance costs.
 - Specific work that cannot be done because of budget or other considerations in a given targeted year should be re-assigned to another appropriate year.

7. The bi-annual plan for delivery for 2008 & 2009 should be submitted by November 30th 2008. This Plan should provide details on:

- The targeted area and identified works within that geographical area
- Target dates for initial design to be completed in respect of each work
- Target dates for consultation and consultation methods to be given
- Target dates for work commencement
- Budget allocation and anticipated budget spend in the year.

The bi annual plans should be limited to what can be achieved within the allocated budgets. Where there are conflicts, the conflict will be resolved by the Access Office.
Our proposed programme of works to implement the requirements of the Disability Act 2005 is set out in the attached Appendices.

Appendix 1.

Public Consultations



Appendix 1

Consultation Role:

The Access Unit has a role to ensure that all interested bodies are involved and have the opportunity to participate throughout the entire process of making Dublin an accessible city by 2015. Part of the Access Unit's role is to facilitate this participation through a series of consultations. The feedback from these consultations is gathered and documented by the Access Unit, which is then brought to the attention of to the relevant City Council departments, who consider this for their work plans.

Consultation Template.

Step	Role
Choosing Target Groups	Include people with Disabilities, all relevant stakeholder organisations, an interested panel of individuals which was gathered in Feb 07, city council staff, City Councillors, Dublin TD's, Housing Welfare, Community Development, Social Inclusion, Community Forum, schools, & interested members of the public.
Set Objectives	Stage 1 Here we will sit down with relevant auditor & department representatives to discuss aims, objectives and format of consultation. At this stage we want to consult with the public about the findings of the audits and what area of works they feel should be given priority. Stage 2 Next, designs and work plans will be made. Here we will sit down with the auditors, the architects, and relevant department representatives to discuss consultation with the public. Here, we will want feedback on the proposed designs/workplan and whether they are conducive to the recommendations made from the initial consultations and in the audit reports.
Raise Awareness	To raise awareness about the a consultation we would conduct a mail shot, e-mail, telephone, use City Council Forum, Firstpost, www.dublincity.ie and on our own web site www.accessdublin.ie , Notices in the Evening Herald, Metro, Herald AM, Southside People, Northside People, Irish Times, Irish Independent, and Social Inclusion Magazine. Keep account of all participants' details and use again for further consultations.

	<p>Updates on access issues to be published in Access Matters magazine. The Access Unit in conjunction with Corporate Services Dept in City Council are currently in the process of integrating 14 lcd television screen around various City Council buildings that have heavy public footfall. These screens will be used to raise awareness about the consultation process and highlight any proposed plans that the public are invited to comment on.</p>
<p>Types of Consultation & Structure</p>	<p>We endeavour to provide a variety of channels for people to be able to consult with us, i.e. Public Meeting: Venue to be fully accessible. Special arrangements for participants with a range of disabilities; e.g. sign language interpreters, independent facilitators, a loop system will be put in place, clear concise visuals, porters on hand in-case of need of assistance, drinking water for guide dogs, refreshments, accessible toilet facilities, car parking, ease of public transport, and suitable surrounding street lighting. Public meetings will take on a group workshop style format.</p> <p>Web Based, www.accessdublin.ie : all audit reports, photo templates, presentations, the Implementation Plan (both draft & revised), and eventually remedial work designs will be made available for the public to view on www.accessdublin.ie . People will be able to comment on, make submissions, or interact with each other in relation to the audit reports, implementation plan etc on-line and can be acted upon by the Access Unit where appropriate. Any member of the public that wishes to add or read a comment will be required to go through a registration process prior to posting any updates. The Access Unit will analyse the feedback, will respond where appropriate, notify the relevant departments where appropriate, and will publish reports such as design plans, and feedback responses to the correct locations as they become available from the different departments.</p> <p>Panel/Book Presentations: Summary of the audit reports/photo templates will be on view in the relevant local area offices for the public to view, with a comments box available for them to make submissions. Depending on the size and layout of the area office some will display these on panels while others will use a book format.</p> <p>E-mail/Fax/Write/Telephone: On viewing the material via the web, public meeting, or in an area office people will be able to make submissions via e-mail at audit@accessdublin.ie , by fax, telephone, or by post (see back cover for details)</p>

Feedback	<p>The feedback from the consultation process will be gathered and documented into a report by the Access Unit. This report will be distributed to;</p> <ul style="list-style-type: none"> The DCC Disability Steering Group City Manager The relevant DCC departments All consultation participants All relevant stakeholder organisations Disability consultation panel Dublin TD'S City Councillors DOE Disability Focus Group.
----------	--



Appendix 2.

Buildings.



Appendix 2

Framework Implementation Plan on an Annual basis for Buildings

Because of the large number of buildings in Area 1 it has been necessary to allocate some buildings to later years. This has been done on the following order of priority:

1. Buildings with high usage and poor accessibility.
2. Buildings which were recently constructed or renovated and are reasonably accessible.
3. Buildings that are subject of major redevelopment plans. Access issues on these buildings will be dealt with at time of redevelopment

Note: Fees have been added to the estimated costs established by the audits

Buildings from Area 1 that are subject of major redevelopment plans are listed here.

(See note 3 above)

Kevin Street Library

Central Library

Mansion House.

Fruit and Vegetable Market, St Michan's Street

City Morgue and Coroner's Court.

Civic Museum, South William Street

2008 Area 1.
North Inner City, South East Inner City, South West Inner City.

<u>Buildings</u>	<u>Manager responsible</u>	<u>Estimated Cost</u>	<u>Contract Allocation Date</u>	<u>Completion Date</u>	<u>Comment</u>
Libraries					
Charleville Mall, North Strand	Paul Clegg	130,000	April 2008	Oct 2008	
Drumcondra, Millmount Ave	Paul Clegg	270,000	April 2008	Oct 2008	
Marino, Marino Mart	Paul Clegg	90,000	April 2008	Oct 2008	
Pembroke, Angelsea Rd	Paul Clegg	525,000	June 2008	March 2009	Planning notice reqd
Phibsboro, Blacquire Bridge	Paul Clegg	280,000	April 2008	Oct 2008	
Ringsend	Paul Clegg	150,000	April 2008	Oct 2008	
Cabra	Paul Clegg	210,000	April 2008	August 2008	
Rathmines	Paul Clegg	700,000	June 2008	Oct 2009	Planning notice reqd
Ballyfermot	Paul Clegg	95,000	April 2008	Oct 2008	

Total Estimated Cost of above list of libraries

€2,450,000.00

<u>Buildings</u>	<u>Manager responsible</u>	<u>Estimated Cost</u>	<u>Contract Allocation Date</u>	<u>Completion Date</u>	<u>Comment</u>
Civic Offices	M. Twomey	840,000.00	March 2008	March 2009	

Total 2008 (Libraries and Civic Offices)

€3,200,000.00

2009 Area 2:
Ballyfermot, Cabra-Drumcondra.

<u>Buildings</u>	<u>Manager responsible</u>	<u>Estimated Cost</u>	<u>Contract Allocation Date</u>	<u>Completion Date</u>	<u>Comment</u>
Phibsboro Fire Station	Gerry Geraghty	36,675	Jan 2010	June 2010	
Dunard Community Centre, Dunard road	Charlie Lowe	12,375.00	Jan 2010	June 2010	
Cabra Parkside Community & Sports Centre, Ratoath Road.	Paul Clegg	25,875.00	Jan 2010	June 2010	
Ballyfermot Civic Centre	Anne Graham	151,875.00	Sept 2009	Sept 2010	
Orchard Community Centre, Cherry Orchard	Ciaran Dunne	25,500.00	Jan 2010	June 2010	
Cherry Orchard Equine & Educational Training Ctr.	Ciaran Dunne	31,500.00	Jan 2010	June 2010	
Cherry Orchard Family Centre. (The Bungalow)	Ciaran Dunne	20,250.00	Jan 2010	June 2010	
Municipal Rowing Club, Islandbridge	Paul Clegg	20,250.00	Nov 2009	April 2010	

Total Estimated Cost Area 2 €327,300.00

2009.**Buildings from Area 1 with high usage and poor accessibility**

<u>Buildings</u>	<u>Manager responsible</u>	<u>Estimated Cost</u>	<u>Contract Allocation Date</u>	<u>Completion Date</u>	<u>Comment</u>
Dolphin's Barn Library	Paul Clegg	38,000.00	Oct 2009	June 2010	
Rates Office, 16 Castle St	Peter Ayton	20,600.00	Nov 2009	June 2010	
Dawson St Car Park, School House Lane.	Co Coll	74,250.00	Sept 2009	Oct 2010	
Drury St, Car Park,	Con Coll	75,400.00	Sept 2009	Oct 2010	
16-19 Wellington Quay	Maire Twomey	162,000.00	Sept 2009	Oct 2010	
Swimming Pool, Sean McDermott St.	Paul Clegg	68,630.00	Sept 2009	Oct 2010	
.Aughrim St Sports Centre.	Paul Clegg	10,600.00	Feb 2010	Sept 2010	
St Laurence o'Toole Community & RecreationCentre.	Paul Clegg	20,250.00	Feb 2010	Sept 2010	
Mountjoy Community Hall	Charlie Lowe	24,750.00	Feb 2010	Sept 2010	

Total Estimated Cost Area 1 buildings €494,480.00

Total Estimated Cost for 2009 €821,780.00

2010 Area 3
Crumlin Kimmage, Finglas.

<u>Buildings</u>	<u>Manager responsible</u>	<u>Estimated Cost</u>	<u>Contract Allocation Date</u>	<u>Completion Date</u>	<u>Comment</u>
Finglas Civic Centre.	Damian Drumm	56,250.00	Oct 2010	August 2011	
Finglas Library	Paul Clegg	64,000.00	Oct 2010	August 2011	
Finglas Leisure Centre	Paul Clegg	73,125.00	Oct 2010	Oct 2011	
Finglas Fire Station	Gerry Geraghty	10,500.00	Feb 2011	Sept 2011	
Griffith Area Community Centre, Finglas East	Damian Drumm	18,500.00	Feb 2011	August 2011	
Finglas Community Facilities, Avila Close	Damian Drumm	48,400.00	Feb 2011	August 2011	
Inchicore library	Paul Clegg	48,800.00	Dec 2010	Oct 2011	
Walkinstown Library	Paul Clegg	20,300.00	Dec 2010	May 2011	
Crumlin Swimming Pool	Paul Clegg	65,250.00	Dec 2010	Oct 2011	
Donore Youth & Community Centre	Paul Clegg	87,200.00	Dec 2010	Oct 2011	
Mount Tallant Boxing Club, Neagh Rd	Paul Clegg	14,500.00	Feb 2011	August 2011	

Total Estimated Cost Area 3 €506,825.00

2010.**Buildings from Area 1 with high usage and poor accessibility**

<u>Buildings</u>	<u>Manager responsible</u>	<u>Estimated Cost</u>	<u>Contract Allocation Date</u>	<u>Completion Date</u>
ST Paul's Community Centre, Blackhall Place	Charlie Lowe	27,000.00	Feb 2011	Sept 2011
Hardwick St Community Centre	Charlie Lowe	11,250.00	Feb 2011	Sept 2011
George's Pocket Community Centre, Georges Place	Charlie Lowe	14,000.00	Feb 2011	Sept 2011
Dominic St, Community Centre	Charlie Lowe	6,750.00	Feb 2011	Sept 2011
Macro Community Resource Ctr, Green St	Own board of mgt	12,700.00	Feb 2011	Sept 2011
St Catherine's Sports Ctr, Marrowbone Lane	Paul Clegg	264,400.00	Nov 2010	Oct 2011
St Laurence O'Toole Sports Hall Sheriff St	Paul Clegg	117,000.00	Nov 2010	Oct 2011
160 Capel Street	Con Coll	9,000.00	Feb 2011	Oct 2011
9 Merchant's Quay	Con Coll	21,400.00	Feb 2011	Oct 2011
Parkgate Hall, 6-9 Conyngham Road	Ciaran Dunne	28,150.00	Feb 2011	Oct 2011

Total Estimated Cost Area 1 buildings €511,650.00

Total Estimated Cost for 2010 €1,018,475.00

2011 Area 4
Rathmines, Ballymun/Whitehall.

<u>Buildings</u>	<u>Manager responsible</u>	<u>Estimated Cost</u>	<u>Contract Allocation Date</u>	<u>Completion Date</u>	<u>Comment</u>
Ballymun Regional Youth Resource Ctr. Sillogue Rd.	Private	187,900.00	Oct 2011	Oct 2012	
Ballymun Civic Centre	Damian Drumm	203,600.00	Oct 2011	Oct 2012	
Ballymun Leisure Centre	Paul Clegg	65,250.00	Oct 2011	Oct 2012	
Ballymun Library	Paul Clegg	31,500.00	Oct 2011	May 2012	
Axis Centre	Damian Drumm	127,800.00	Oct 2011	Oct 2012	
Ballymun Community Facilities, St Margaret's Rd.	Damian Drumm	50,200.00	Feb 2012	Sept 2012	
Horizon Community Building, Ballymun Rd.	Damian Drumm	67,200.00	Feb 2012	Oct 2012	
St Pappins Community Building, Ballymun Rd.	Damian Drumm	50,600.00	Feb 2012	Oct 2012	
Terenure Library	Paul Clegg	24,700.00	Feb 2012	Oct 2012	

Total Estimated Cost Area 4 €808,750.00

2011. Buildings from Area 1 with high usage and poor accessibility

<u>Buildings</u>	<u>Manager responsible</u>	<u>Estimated Cost</u>	<u>Contract Allocation Date</u>	<u>Completion Date</u>	<u>Comment</u>
Pearse Recreation Centre	Paul Clegg	13,500.00	Feb 2012	Oct 2012	
Markievicz Hse Community Centre, Townsend St	Eileen Brady	32,600.00	Feb 2012	Oct 2012	
Oliver Bond Community Ctr, Cook St	Eileen Brady	19,000.00	Feb 2012	Oct 2012	
St James Youth & Family Resource Ctr, 2 Upr Basin St	Board of Mgt	18,900.00	Feb 2012	Oct 2012	
East Wall Recreation Ctr, Russel Ave	Paul Clegg	22,500.00	Feb 2012	Oct 2012	
Programme Support Accommodation, 1/2 Dorset St	Ciaran Dunne	55,200.00	Feb 2012	Oct 2012	
Shelter, 69 Blessington St	C. Dunne	37,600.00	Feb 2012	Oct 2012	
Night Shelter Marlborough Pl.	C Dunne	71,500.00	Feb 2012	Oct 2012	
Hostel, Benburb St	C. Dunne	63,000.00	Feb 2012	Oct 2012	
Hostel, 62 Amiens St	C. Dunne	42,750.00	Feb 2012	Oct 2012	
Hostel, 595 Nth Circular Rd	C. Dunne	63,200.00	Feb 2012	Oct 2012	
Dolphin's Barn Fire Strn	G Geraghty	23,200.00	Feb 2012	Oct 2012	
Total Estimated Cost		Area 1 buildings	€462,950.00		

Total Estimated Cost for 2011

€1,271,700.00

2012 Area 5 Pembroke, Artane.

<u>Buildings</u>	<u>Manager responsible</u>	<u>Estimated Cost</u>	<u>Contract Allocation Date</u>	<u>Completion Date</u>	<u>Comment</u>
Irishtown stadium	Paul Clegg	18,600.00	Jan 2013	Oct 2013	
Glin Road Sports Hall, Coolock	Celine Reilly	22,500.00	Jan 2013	Oct 2013	
Coolock Library	Paul Clegg	28,200.00	Jan 2013	Oct 2013	
Donnybrook Fire Station	Gerry Geraghty	22,500.00	Jan 2013	Oct 2013	
Kilmore West Recreation Centre, Coolock	Celine Reilly	50,000.00	Jan 2013	Oct 2013	
Coolock Community Facilities, Cara Park	Celine Reilly	57,000.00	Jan 2013	Oct 2013	

Total Estimated Cost Area 5 €198,800.00

2012 Buildings from Area 1 recently renovated and reasonably accessible.

<u>Buildings</u>	<u>Manager responsible</u>	<u>Estimated Cost</u>	<u>Contract Allocation Date</u>	<u>Completion Date</u>	<u>Comment</u>
Central Fire Stn & Admin Offices	Gerry Geraghty	22,200.00	Jan 2013	Oct 2013	
Central Fire Stn & Control Building	Gerry Geraghty	38,000.00	Jan 2013	Oct 2013	
Markievicz Leisure Centre	Paul Clegg	112,500.00	Jan 2013	Oct 2013	
Dublin City Gallery, The Hugh Lane	Paul Clegg	218,250.00	Jan 2013	Oct 2013	
The Lab, Foley Street	Paul Clegg	114,750.00	Jan 2013	Oct 2013	

Total Estimated Cost Area 1 buildings €505,700.00

Total Estimated Cost for 2012 €704,500.00

2013 Area 6 Donaghmede, Clontarf.

<u>Buildings</u>	<u>Manager responsible</u>	<u>Estimated Cost</u>	<u>Contract Allocation Date</u>	<u>Completion Date</u>	<u>Comment</u>
Donaghmede Library	Paul Clegg	23,600.00	Jan 2014	Oct 2014	
Raheny Library	Paul Clegg	29,000.00	Jan 2014	Oct 2014	
Darndale Area Office	Celine Reilly	6,000.00	Jan 2014	Oct 2014	
Fire Brigade Training Centre, Marino	Gerry Geraghty	314,000.00	Jan 2014	Oct 2014	
North Bull Island Interpretive Centre	Paul Clegg	72,000.00	Jan 2014	Oct 2014	
North Strand Fire Station	Gerry Geraghty	9,500	Jan 2014	Oct 2014	
Kilbarrack Fire Station	Gerry Geraghty	12,400.00	Jan 2014	Oct 2014	
Glin Community Centre, Bonnybrook	Celine Reilly	28,400.00	Jan 2014	Oct 2014	
Kare Social Service Centre, Raheny	Celine Reilly	25,200.00	Jan 2014	Oct 2014	

Total Estimated Cost Area 6 €520,100.00

2013 Buildings from Area 1 recently constructed / renovated and reasonably accessible.

<u>Buildings</u>	<u>Manager responsible</u>	<u>Estimated Cost</u>	<u>Contract Allocation Date</u>	<u>Completion Date</u>	<u>Comment</u>
Eblana House, Marrowbone Lane	Con Coll	82,200.00	Jan 2014	Oct 2014	
Pearse St Library	Paul Clegg	56,250.00	Feb 2012	Oct 2012	
City Hall	Paul Clegg	42,750.00	Feb 2012	Oct 2012	

Total Estimated Cost Area 1 buildings €181,200.00

Total Estimated Cost for 2013 €701,300.00

Appendix 3

Parks.



Appendix 3

Dublin City Council Parks. Phased Implementation Areas.

DCC Parks as per Phased Implementation Areas	
2008	Area 1 North Inner City, South East Inner City, South West Inner City
2009	Area 2 Ballyfermot, Cabra /Glasnevin.
2010	Area 3 Crumlin Kimmage, Finglas.
2011	Area 4 Ballymun/ Whitehall, Rathmines,
2012	Area 5 Pembroke/Sandymount, Marino/Artane/Coolock
2013	Area 6 Donaghmede, Clontarf

2008

Park Name	Year	Implementation Area	DCC Area	Estimated Cost	Comment
Blessington St Broadstone	2008	1	Central	75,210	Play Area (BroadstonePark)
Boy's Brigade	2008	1	South Central	30,270	Playing Fields
Cabbage Garden	2008	1	South East	40,972	Sports Area
Christchurch Park	2008	1	South East	25,105	
City Quay	2008	1	South East	27,247	
Clarevill Park	2008	1	Central	27,723	
Croppies Park	2008	1	Central	20,515	

Diamond Park	2008	1	Central	32,990	Play Area; Basketball Court
Grand Canal Spur	2008	1	South Central	55,475	
Gt Western Square Park	2008	1	Central	20,310	
Kings Inn	2008	1	Central	40,620	
Merrion Square	2008	1	South East	81,310	
Mountjoy Square Park	2008	1	Central	43,720	Play area, Sports Area
Oisín Kelly	2008	1	South Central	18,687	
Peace Park	2008	1	South East	37,472	
Pearse Square	2008	1	South East	55,215	
Portland Place	2008	1	Central	20,309	Play Area; Basketball Court
Sherrif Street Park	2008	1	Central	29,389	Play Area: Sports Area
St Audeons Park	2008	1	South Central	31,055	
St Catherine's Park	2008	1	South Central	24,949	
St Kevins Park	2008	1	South East	32,519	
St Michan's Park	2008	1	Central	23,125	Play Area, Handball Alley
St Patricks Park	2008	1	South East	151,630	Play Area
Wolfe Tone Park	2008	1	Central	15,483	

2009 Park Name	Year	Area	DCC Area	Estimated Cost	Comment
Ashington Park	2009	2	Central		Tennis Court & Sports Area
Ballyfermot Civic Park	2009	2	South Central		
California Hills Park	2009	2	South Central		
Cherry Orchard Park	2009	2	South Central		
Dundard Estate	2009	2	Central		
East Timor Park	2009	2	South Central		Playing Fields
Glendau Park	2009	2	Central		
Grattan Crescent	2009	2	South Central		
Griffith Park	2009	2	Central		Play Area
Le Fanu Park	2009	2	South Central		PAVILION (x1), Playing Fields
Liffey Valley Park	2009	2	South Central		Sports Track
L/meadows Pitch &Putt	2009	2	South Central		
Markievicz Park	2009	2	South Central		PAVILION (x1) Play Area Playing Field
Martin Savage Park	2009	2	Central		Playing Fields
Mount Bernard Park	2009	2	Central		Tennis & Basketball Court
Muskerry Park	2009	2	South Central		
Pope John Paul II Park	2009	2	Central		PAVILION (x1),Play Area; Playing Field
Ring Street	2009	2	South Central		Play Area; Basketball Court
Shandon Gardens	2009	2	Central		
Tolka Valley Par 3	2009	2	North West		
Tolka Valley Park	2009	2	North West		PAVILION (x1),
Turvey Avenue Park	2009	2	South Central		Sports Area
Violet Hill	2009	2	Central		

2010 Park Name	Year	Implementation Area	DCC Area	Estimated Cost	Comment
Benmadigan Park	2010	3	South Central		Playing Fields
Brickfield Park	2010	3	South Central		PAVILION (x1),Playing Fields
Bunting Road Park	2010	3	South Central		Playing Fields?
Bushy Park	2010	3	South Central		PAVILION (x3) Playing Field,Skatepark
Cappagh Green	2010	3	North West		
Clonmacnoise Bangor Circle	2010	3	South Central		
Deanstown Park	2010	3	North West		
Eamonn Ceannt Park	2010	3	South Central		PAVILION (x1) PlayArea,SportFields,Track
Eaton Square Park	2010	3	South Central		
Farnham Drive	2010	3	North West		
Galtymore Park	2010	3	South Central		Playing Fields
Harold's Cross Park	2010	3	South Central		Play Area
Johnstown Park	2010	3	North West		Play Area; Playing Fields
Kildonan Park	2010	3	North West		
Landsdown Valley	2010	3	South Central		
Landsdown Valley Pitch and Putt	2010	3	South Central		
Mellowes Park	2010	3	North West		Play Area; Playing Fields
Neigh Road	2010	3	South Central		Sports Area
Northway Estate	2010	3	North West		
Plunket Green	2010	3	North West		Playing Fields
Poddle Park	2010	3	South Central		
Stannaway Park	2010	3	South Central		PAVILION (x1),Playing Fields

Walkinstown Park	2010	3	South Central		PAVILION (x1),Playing Fields	
Willie Pearse Park	2010	3	South Central		PAVILION (x1),Playing Fields	

2011 Park Name	Year	Implementation Area	DCC Area	Estimated Cost	Comment
Albert College	2011	4	North West		PAVILION (x2), Play Area
Balcurris Park	2011	4	North West		Play Area
Belgrave Square	2011	4	South East		Play Area
Coultry Road	2011	4	North West		Play Area
Courtylands Glasnevin	2011	4	North West		Sports Area Tennis Courts
Dartry Park	2011	4	South East		
Dodder – Milltown	2011	4	South East		
Dodder –Dropping Well	2011	4	South East		
Fairfield Park	2011	4	South East		
Herzog Park	2011	4	South East		Tennis Courts
Orwell Park	2011	4	South East		
Palmerston Park	2011	4	South East		
Silloogue Golf Course	2011	4	North West		PAVILION (x1), Associated Pavilions
Tranquilla Park	2011	4	South East		Play Area

2012 Park Name	Year	Implementation Area	DCC Area	Estimated Cost	Comment
Ardmore Drive	2012	5	North Central	43,532	
Beaumont Woods	2012	5	North Central	19,847	
Beech Hill	2012	5	South East		Playing Fields
Belcamp Park	2012	5	North Central	201,850	PAVILION (x1)PlayArea,SportsArea&Field *Pavillion not incl in est
Clonturk Park	2012	5	North Central	93,886	Playing Field & Pavillion * Pavillion nt inc in est
Coolnagreena Close	2012	5	North Central	5,480	
Croyden Gardens	2012	5	North Central	33,300	PAVILION (x1), * Pavillion nt inc in est
Darndale Park	2012	5	North Central	102,850	PlayArea,SportsArea&Field
Ellenfield Park	2012	5	North Central	84,070	PAVILION (x2) Play Area, Tennis, PI Fields* Pavillion not inc in est
Glin Park	2012	5	North Central	98,150	Playing Fields
Grace Park	2012	5	North Central	89,333	
Herbert Park	2012	5	South East		PAVILION (x2), Play Area, Playing Fields
Irishtown Nature Park	2012	5	South East		
Kilmore Drive	2012	5	North Central	115,375	Playing Field
Kilmore Green	2012	5	North Central	7,360	
Marino Park	2012	5	North Central	131,031	PAVILION (x1), * Pavillion nt inc in est
Maypark	2012	5	North Central	24,690	
McAuley Park	2012	5	North Central	25,680	Playing Field Derelict Court
Oscar Traynor Park	2012	5	North Central	280,530	Playing Fields
Ranelagh Gardens	2012	5	South East		
Ringsend Park	2012	5	South East		Playing Fields

Riverside Park	2012	5	North Central	56,280	
Rockfield Ave	2012	5	North Central	80,940	PAVILION (x1), Sports Areas
Sandymount Green	2012	5	South East		
Sandymount Strand	2012	5	South East		
Sean Moore Park	2012	5	South East		Playing Fields
Shelley Banks	2012	5	South East		
Southdock Street	2012	5	South East		Play Area; Basketball Court
Springdale Road Park	2012	5	North Central		Playing Field
Stardust Memorial Park	2012	5	North Central	161,950	Play Area, Sports Area

2013	Park Name	Year	Implementation Area	DCC Area	Estimated Cost	Comment
	Bram Stoker Park	2013	6	North Central	31,388	
	Clontarf Promenade	2013	6	North Central	205,596	
	Donaghmede Park	2013	6	North Central	126,980	Playing Fields, Sports Area
	Edenmore Green	2013	6	North Central	32,575	Playing Field
	Edenmore Park	2013	6	North Central	67,630	PAVILION (x1),Playing Field *
	Fairview Park	2013	6	North Central	255,975	Pavillion nt inc in est
	Foxfield St Assam's	2013	6	North Central	80,975	PlayArea,SportsArea&Field
	Grange Abbey	2013	6	North Central	15,970	
	Grangemore	2013	6	North Central	76,240	
	Holywell	2013	6	North Central	76,240	
	North Bull Island	2013	6	North Central	280,530	
	Rose Glen Ave	2013	6	North Central	2,665	Playing Field
	St Annes Park	2013	6	North Central		PAVILION (x2),Play Area; Playing Fields
	The Donahies	2013	6	North Central	206,015	Playing Fields

Park Name	Year	Area	DCC Area	Estimated Cost	Comment
Parks Due For or Under Construction					
Chancery Street			Central	31,995	
Liberty Park			Central	43,170	
Royal Canal Bank			Central		
Ormond Square			Central	26,360	

Appendix 4

Roads, Streets, Pavements & Pedestrian Crossings.



Appendix 4 Framework Implementation Plan for Roads and Streets

This report provides details of the Roads and Traffic Department implementation plan. In developing the plan, cognisance was taken of all the issues arising from the Roads and Traffic Public consultation process and identified in audits of all roads, streets, pavements and pedestrian facilities carried out to date. The implementation plan focuses on policy and day-to-day issues in the roads and streets environment.

Roads and Traffic Access Audits

To meet the requirement of the Disability Act in relation to making roads and streets accessible, Dublin City Council engaged consultants Configure Limited to carry out an audit of all roads, streets, pavements and pedestrian crossings in the city. As part of the contract, the city was divided up into 136 areas containing over 2500 roads and streets. The main requirements of the access brief were as follows:

1. To identify access hazards within the roads and streets network of the Dublin City Council area
2. To examine the feasibility of removing all such hazards, by provision of remedial action.

Audits on all the city roads and street will be completed in early 2008. These audits will guide the Roads and Traffic Department in prioritising accessibility issues and also will provide guidance in the coming years to make roads and street more accessible.

Note: Roads and Traffic Department are assessing the audits of all roads and streets. This assessment is not yet finalised. This Implementation Plan therefore deals with Implementation up to 2009. The Implementation Plan will be revised in the 3rd quarter of 2008 and circulated to interested parties.

Public Consultation

Arising from the public consultation process, a number of access issues emerged which will form part of the Roads and Traffic Department Implementation Plan.

Issue 1 Footway design / crossing points

The design, construction and maintenance of footways and crossing points are an important factor in ensuring access for the mobility impaired. The following difficulties were identified as part of the Access Audits on Roads and Streets and as part of the public consultation.

1. Kerbs not dropped sufficiently at crossing points or no dropped kerb in place. A lip at a dropped kerb can cause difficulties for wheelchair users.
2. Narrow footways restricting the use for certain road users.
3. Lack of consistency in the design and shape, colour, layout and slope of tactile paving at crossing points.
4. Tactile paving not extending back to the building line.
5. Lack of tactile paving at uncontrolled crossings.
6. Difficulty approaching some Luas stops in the city due to lack of suitable tactile paving.
7. Metal steel studs deemed unsuitable for certain road users as they are not easily identified by the visually impaired and can become slippery in frosty and wet weather causing difficulties for the mobility impaired.
8. Lack of a clear definition between footway and roadway on some roads in the city.
9. Holes, cracks and loose slabs in footways around the city.
10. Presence of gullies / drains in the footway at crossing points result in ponding and often causing problems for those wearing high heels.

Issue 2 Obstructions on Footways

Permanent or temporary obstructions on a footway can cause problems for the mobility impaired especially for those with visual impairments. The following obstructions were identified on the public footway as part of the Access Audits on Road and Streets and as part of the public consultation:

1. 'A' Frame or 'Sandwich' Advertising boards.
2. Cycle parking where the footway is narrow.
3. Free standing flowerpots.
4. Overgrown hedgerow.
5. Low signage such as 'For sale' signs.
6. Low hanging baskets.
7. Street furniture including tables and chairs.
8. Litter Bins, temporary or permanent.

Other problems identified are as follows:

1. Lack of contrast between street furniture and the footway, i.e. footway seating, traffic poles, cycle stands, bollards, litter bins etc
2. No prior indication on footways for the mobility impaired at locations where Dublin City Council has granted licences for the provision of tables and chairs outside premises.
3. Chains provided between bollards causing a trip hazard.

Issue 3 Design of disabled parking bays

A well designed parking layout will ensure that drivers can circulate safely and manoeuvre easily into and out of a disabled parking space. The following difficulties were identified in relation to disabled parking bays as part of the Access Audits on Roads and Streets and as part of the public consultation.

1. Lack of a transition space / hatched area near a disabled parking bay to allow ease of getting a wheelchair out of the rear of the car and ease of access onto the footway, i.e. parking bay widths and lengths too narrow.
2. No dropped kerbs near a disabled parking bay.
3. Footways too high near a disabled parking bay.
4. No signage showing the location of disabled parking bays.
5. Some disabled parking bays are on a high slope making it difficult to get into and out of the vehicle.
6. No map showing locations of disabled parking bays in the city provided by Dublin City Council.

Issue 4 Public Transport accessibility

Public transport has a key role in moving people around the city. Good access to public transport nodes and public transport vehicles is important for all road users, in particular the mobility impaired. The following problems were identified in accessing buses and taxis as part of the Access Audits on Road and Streets and as part of the public consultation:

1. Access to the main public transport stations Busarus, Heuston Station and Connolly Station can be difficult for the visually impaired due to a lack of safe crossing points and clear routes.
2. Many kerbs at bus stops and taxi ranks are too low.
3. Buses cannot pull up to kerb edge with gaps causing access difficulties for some road users such as the elderly and wheelchair users.

Issue 5 Lack of enforcement of traffic regulations

The following items were identified as part of the Access Audits on Road and Streets and as part of the public consultation, which can lead to difficulty for all mobility impaired persons, in particular, the visually impaired and the elderly.

1. Cyclists using footways or pedestrianised areas.
2. Illegal parking by vehicles on footways.
3. Red light breaking by vehicles.
4. Red light breaking by pedal cyclists.
5. Lack of public awareness of traffic violations.

Issue 6 Road Works and Construction Sites

The following difficulties were identified in relation to roadwork's sites and in the vicinity of building sites as part of the Access Audits on Road and Streets and as part of the public consultation.

1. Temporary routes not always being provided by contractors to facilitate mobility impaired persons near road works sites and building sites.
2. As part of hoarding, temporary wooden arrangements for pedestrians usually do not have any or insufficient lighting making it difficult to access by those with visual impairments

Issue 7 Public Lighting

Good lighting in a street environment after dark is essential for the safety and comfort of all road users by allowing users to identify their route. Variations in lighting levels, glare and reflection can cause confusion for those with visual impairments.

The following difficulties with public lighting were identified as part of the Access Audits on Roads and Streets and as part of the public consultation:

1. Inadequate floor level lighting at some locations and pavement lights blocking out the surrounding footway.
2. Street lighting only provided on one side of the road, Long space between street lights, not enough street lights and overgrown trees causing insufficient lighting if any provided in roadwork's temporary wooden walkways.
1. A list of items identified in the Access Audits to be prioritised and costed by the Public Lighting section for inclusion in future Works Programmes. Q3 2008.

Programme of works for 2008 and timescale

As part of the 2008 Road Maintenance Works Programme, it is proposed to carry out footway improvement works at various locations through the 5 City Council Areas in the city at a cost of €3.4million. These are itemised in Appendix 'A' and will be carried out throughout 2008.

Summary

The Roads and Traffic Department are committed to improving accessibility for all road users in the roads and street environment. In developing this implementation plan, issues arising from the public consultation process were considered. Over time, issues arising in the citywide audits will provide focus on areas in the city that require attention to make roads, streets, pavements and traffic signals more accessible, with priority to be given to areas in the city centre. The following table provides a summary of the commitments from the Roads and Traffic Department as part of the implementation plan, mainly to be carried out by existing resources and from funding from external agencies.

Issue	Item	Timeframe
1	Develop policy on the design of all footways and crossing points.	June 2008
1, 7	Annual Roads Maintenance Works Programme to include items relating to accessibility (Appendix A)	March 2008
1	A list of controlled signal crossing requiring Mobility Impaired and disabled facilities list to be drawn up by the Traffic Signals Section (Appendix B)	March 2008
1, 7	Items arising from the access audits to be prioritised with focus to be given to areas in the City Centre	September 2008
2	Develop policy on street furniture relating to mobility	June 2008
2	Ongoing monitoring of items being placed illegally on public footways	June 2008
3, 4	Develop policy in the design of disabled parking bays, bus stops and taxi ranks	September 2008
3	May to be prepared showing the location of disabled parking bays in the city centre.	June 2008
5	Ongoing enforcement of parking and traffic violations arising from the access audits	March 2008 March 2008
6	Review of Roadwork's control directive	September 2008

1. Improved city centre accessibility
2. Improved pedestrian facilities in the city
3. Improved access to public transport nodes
4. Improved access to disabled parking bays

Appendix 'A' – Footway Improvements City Wide

Central Area		Area	Cost
Inns Quay	Flagged Path		5,000
Ormond Quay	Flagged Path		5,000
Liffey Street junction with Quays	Brick Path		5,000
Bachelors Walk	Flagged Path		10,000
Berkeley Rd Flag foot path from no. 35 to Eccles St.	Flagged Path	400	100,000
Prospect Road	Concrete Path	320	41,600
Annamoe Terrace to Cabra Rd end	Concrete Path	240	27,600
Dunard Est. (misc footpath / dishings)	Concrete Path		30,000
Violet Hill	Concrete Path		8,000
Clonliffe Rd (from Tolka rd to no. 164)	Concrete Path	1300	149,500
Drumcliffe Road (Killala rd to Inver rd Lhs)	Concrete Path	210	24,150
Grattan Parade off Dorset St. (dishings)	Concrete Path		3,000
Gardiner St (flagged path east side north of Talbot St.)	Flagged Footpath		8,000
Cathal Brugha St (south path flags)	Flagged Footpath		10,000
Findlater Place	Flagged Footpath		5,000
Ratra area	Concrete Path		15,000
Kilkieran Road at school	Concrete Path	560	72,800
Leinster St. north	Concrete Path	245	25,000
Spencer St. north	Concrete Path	432	42,000
James St	Concrete Path	180	21,000
Spencer Place	Concrete Path		8,000
Prussia St. (St Josephs rd to opposite shopping centre)	Concrete Path	350	40,250

Prussia St. 40 meters south of NCR	Concrete Path	170	19,550
NCR from Aughrim St. to Park entrance (adj to trees)	Asphalt Path		80,000
Ratoath Rd (west side from no. 63 to opposite no.11	Concrete Path	660	75,900
Fassaugh Avenue (at shops / post office)	Concrete Footway		10,000
	Total		841,350

South East			Area	Cost
Dartmouth Square East (Houses side) & Dartmouth Walk	Concrete Footpath Reconstruction		1192	190,720
Rathmines Road Upper part of East Side	Concrete Footpath Reconstruction		473	75,680
Vergemount Hall	Concrete Footpath Reconstruction		182	29,120
Beechhill Estate	Concrete Footpath Reconstruction		150	24,000
Claremont Park	Concrete Footpath Reconstruction		525	84,000
Mount Drummond Estate	Replace Tar Margins with concrete		130	20,800
Haddington Place and St. Mary's Lane	Concrete Footpath Reconstruction		125	20,000
Ranelagh Road - Triangle to Luas Station	Flagged Path		331	99,300
Temple Bar area	Flagged Path & Set Reconstruction		400	100,000
			Total	643,620

North West			Area	Cost
Mc Kelvey Est.		Concrete Path		30,000
Footpath fronting DCU on Collins Ave		Footpath Bollards		15,000
Tolka Est, Sections of footpath		Concrete Path		15,000
Hampstead Ave		Concrete Path		15,000
Hampstead Park		Ped dishing		5,000
Willow Park Road		Ped dishing		8,000
Jamestown Road (village)		Concrete path and bollards	455	70,325
Finglas main St. LHS		Concrete Path	165	18,150
Kildonan Ave (10-24)		Concrete Path		8,000
Kilshane Rd		Concrete Path	545	59,950
Dunsink Ave (Dunsink dr to no. 24)		Concrete Path	960	96,000
Willow Park Crescent (fronting shops)		Concrete Path	425	48,875
Willow Park Close		Concrete Path		6,000
Dean Swift Green		Concrete Path		6,000
Deanstown Area		Ped dishing		25,000
Cardiffbridge Road		Concrete Path	470	54,050
Plunkett Crescent		Concrete Path		15,000
McKee Ave @ Superquinn		Concrete Path		11,000
Seamus Ennis Road @ Health Clinic		Concrete path and bollards	180	26,100
Main St. Finglas @AIB		Concrete path and bollards	95	14,400
Seamus Ennis Road @ Shamrock Lodge		Concrete Path	100	12,000
Ecoflex (Seamus Ennis Road @ Health Clinic)		Footpath	230	2,300
		Total		561,150

South Central		Area	Cost
S.C.Rd. Rialto -outside Mannions	Concrete Footway	215	32,250
Sundrive Road (between Nos 53 and 83)	Concrete Footway	905	135,750
Walkinstown Avenue	Concrete Footway	250	40,000
Cleggan Road and Spiddal Road	Pavement Widening at green		50,000
Crumlin & Drimnagh Areas	Replacement of tar margins with concrete	1000	100,000
Ballyfermot Area	Replacement of tar margins with concrete	1000	50,000
		Total	408,000

North Central		Area	
The Thatch Road (Jct Glencorp Rd to outside no.91 and 102and outside 22-42	Reconstruct footpath	675	67,500
Glenhesk Road (outside 31-35)	Reconstruct footpath	97	9,700
Yellow Road (outside 2-20 and 57-61 and 72-84)	Reconstruct footpath	493	49,300
Ellenfield Road (outside 37-67)	Reconstruct footpath	681	68,100
Beaumont Road (outside 1 -109)	Reconstruct footpath	603	60,300
Ferrycarrig Road (outside 11A to 95a)	Reconstruct tarmac verges and dishings	334	33,400
Cromcastle Avenue	Reconstruct tarmac verges and dishings	609	60,900
Kilbarron Park	Reconstruct tarmac verges and dishings	344	34,400
Macroom Road	Reconstruct tarmac verges and dishings	542	54,200

	dishings		
Castletimon Green (outside 11a- 43)	Reconstruct tarmac verges and dishings	203	20,300
Green castle Drive	Reconstruct tarmac verges and dishings	395	39,500
Kilbarron Ave	Reconstruct tarmac verges and dishings	344	34,400
Kilmore Road (jct Oscar Traynor Road- jct Cromcastle Road)	Reconstruct footpath	351	35,100
Oscar Traynor Road (jct Barryscourt Road - across from Woodville Court)	Reconstruct footpath	622	62,200
Ardlea Road (outside 4-36 and 1-11a and 1 chanel ave - 115)	Reconstruct footpath	2345	234,500
Vernon Avenue (outside 55-196 and 48-195 and 71 to appts)	Reconstruct footpath	1600	160,000
Duluce Road (outside 120-144)	Reconstruct footpath	293	29,300
Killester Village (outside the Beechcomber)	Reconstruct footpath + Eircom ducting/ bollards		0
	Total	Total	1,053,100

Appendix 'B' – Junction / pedestrian Crossing Upgrades

<i>Mobility Impaired and Disabled Work 2008</i>		
Site ID	Location	Cost estimate
168	Sheriff St/Wapping street	€55,000.00
562	Botanic Ave / Mannix Rd	€43,000.00
235	Connaught St @ St Peters Rd	€43,000.00
541	Nephin Rd @ St Declans school	€43,000.00
560	Home Farm Rd/ Ferguson Rd	€43,000.00
255	Griffith Ave/Clare Road	€43,000.00
471	WalkinstownAve @ Roundabout	€43,000.00
NEW	Berkley Rd @ Nelson Street	€43,000.00
429	NCR @ Charleville Rd	€32,000.00
25	CamdenSt/HarringtonSt/RichmondSt	€45,000.00
266	Le Fanu Rd @ Kylemore Ave	€32,000.00
34	Charlemont St/Harcourt Rd	€50,000.00
185	TaraSt/TownsendSt	€8,500.00
NEW	Ratoath Rd / Tolka Valley Rd	€55,000.00
	Total	€578,500.00

Appendix 5

Dublin City Disability Stakeholder List

National Council on Ageing and Older People.
People with Disabilities in Ireland
Disability Federation of Ireland
Forum of People with Disabilities
Inclusion Ireland (National Association of People with Intellectual Disability)
Irish Wheelchair Association
SPIRIT IWA Youth Group
National Association for the Deaf
Irish Deaf Society
National Council for the Blind of Ireland
Mental Health Ireland
MS Ireland
Muscular Dystrophy Association of Ireland
Enable Ireland
Cheshire Ireland

Frederichs Ataxia Association of Ireland
CRC Central Remedial Clinic
St Michael's House
St John of God
Ballyfermot Partnership
Ballymun Partnership
Canal Communities Partnership
Dublin Inner City Partnership
Finglas Cabra Partnership
KWCD Partnership
Disability Mainstream Access Project
Northside Partnership
Rathmines Community/Information Centre
Irish Association for Spina Bifida and Hydrocephalus
Dublin Bus User Group
Post Polio Support Group
Age Action Ireland
Centre for Independent Living
National League of the Blind of Ireland
AHEAD
Irish Guide Dogs for the Blind
Feach
National Disability Authority

Appendix 6

Disability Act Complaints Procedure

Step 1

A person with a complaint about an accessibility issue should contact the Access Unit, (see contact details below).

The Access Unit will then refer the complaint to the relevant Dublin City Council department. The Access Unit will ask the relevant department to investigate the complaint and to reply to the complainant within 15 working days. A copy of this reply will also be sent to the Access Unit.

Step 2

If the complainant does not receive a response within the allocated 15 working day period, or if the complainant is unsatisfied with the outcome of a particular response, they may contact the Inquiry Officer, (see contact details below). This contact should be in writing and should set out the cause of the complaint.

The Inquiry Officer will investigate the complaint and make a decision on what action, if any, is required by the City Council department. The Inquiry Officer will respond to the complainant within 15 working days.

Step 3

If the complainant is not satisfied with the response, or with the outcome of the complaint at this stage, they can take the matter further by contacting the Office of the Ombudsman (see contact details below).

Pat O'Donnell, Access Officer,
Access Unit
1st Floor
3 Palace St
Barnardo Square
Dublin 2
Tel: 01 222 3477 / 01 222 2194 / 01 222 6706
E-mail: audit@accessdublin.ie
Fax: 01 7071486

Elaine Hess,
Inquiry Officer
1st Floor
3 Palace St
Barnardo Square
Dublin 2
Tel: 01 222 6139
E-mail: Elaine.hess@dublincity.ie
Fax: 01 7071486

Office of the Ombudsman
18 Lower Leeson St
Dublin 2
Tel: 01 6395600
Fax: 01 6395674
LoCall: 1890 22 30 30
E-mail: ombudsman@ombudsman.gov.ie