



DCC Telecoms Unit

Rooftop Access Product Matrix

MAY 2024

Dublin City Council – Telecoms Unit



Comhairle Cathrach
Bhaile Átha Cliath
Dublin City Council

Contents

1. Document Scope	3
2. Product Description	3
3. Pricing and Rate Card	3
4. Roles and Responsibilities.....	3
5. Processes and Procedures.....	4
6. Commercial and Licence Agreements	4
7. Supporting Information	5
8. Supporting Information Required to Access the Rooftop	5
9. Support Contacts.....	6
10. Product Matrix	6
11. Process Maps.....	7
Appendix A – Rate Cards	10
Appendix B – Commercial Agreement	11

1. Document Scope

This document sets out all aspects of the DCC offering for rooftop access.

2. Product Description

This product facilitates access to the rooftops of DCC owned buildings for the installation of structures and equipment to support telecoms services.

3. Pricing and Rate Card

The rate cards, see Appendix A, apply to standard service offerings within the canals and outside of the canals. Case-by-case pricing will be required for nonstandard offerings. This rate card is currently under review.

4. Roles and Responsibilities

The section sets out the roles and responsibilities of all parties involved in the provision and the use of the rooftop access offering.

The Telecoms Unit:

Provides a single point of contact for the processing of rooftop access requests. The Telecoms Unit will liaise with all other relevant DCC departments for the provision of this product. The other DCC departments include, but are not limited to: Planning, Property, Legal and Parks. Novegen are the Telecoms Unit's appointed management agent.

Contact: support@dctu.zendesk.com

The Customer:

To use the agreed rooftop space in accordance with the agreed commercial agreement, see [Appendix B – Commercial Agreement](#)

DCC Property / Management Companies (Building Managers etc):

Facilitating access to the buildings in a timely manner in line with support SLAs set out in the Commercial agreement.

5. Processes and Procedures

The following processes and procedures have been defined to support Rooftop access.

- New Service Request
- Service Delivery
- Annual Billing

6. Commercial and Licence Agreements

Licence / Commercial Agreements:

An existing commercial agreement, see Appendix B, is in place to support rooftop access product.

7. Supporting Information

The following supporting information is available for rooftop access.

- Asset Maps
- Product Definition
- Rate Card
- Commercial Agreements
- Process Maps
- Planning Guidelines

8. Supporting Information Required to Access the Rooftop

The following information will be required to access the rooftops.

- RAMs
- Health and Safety Statements
- Low Level Designs
- Evidence of Appropriate Insurance
- Appropriate Commercial Agreements
- Surveys
- Planning Documentation

9. Support Contacts

All support requests should be addressed to the Telecoms Unit and/or their management agent Novegen.

Contact: support@dctu.zendesk.com

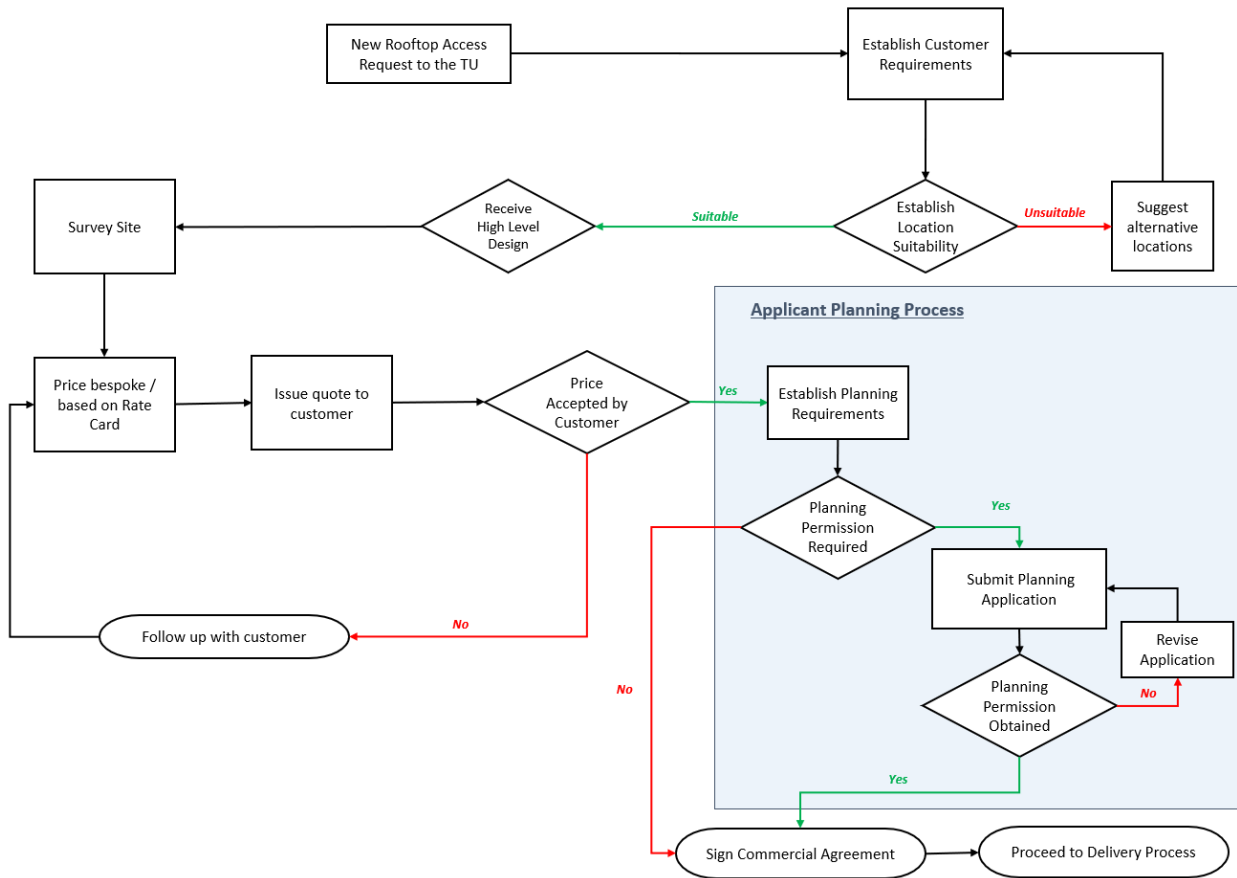
10. Product Matrix

<i>Between the Canals</i>		
Code	Structure	Details
DCCMA-IC1-C	Rooftop Access with equipment room or cabinet	Basic package to include 3 antennae, 2 dishes and an equipment room.
DCCMA-IC1-C1	DCCMA-IC1-C Operator equipment upgrade	Upgrade to the equipment specified in the basic package.
DCCMA-IC1-C2	Power for rooftop installations	In some cases where provision of a separate power supply is too difficult or costly a metered supply may be provided.

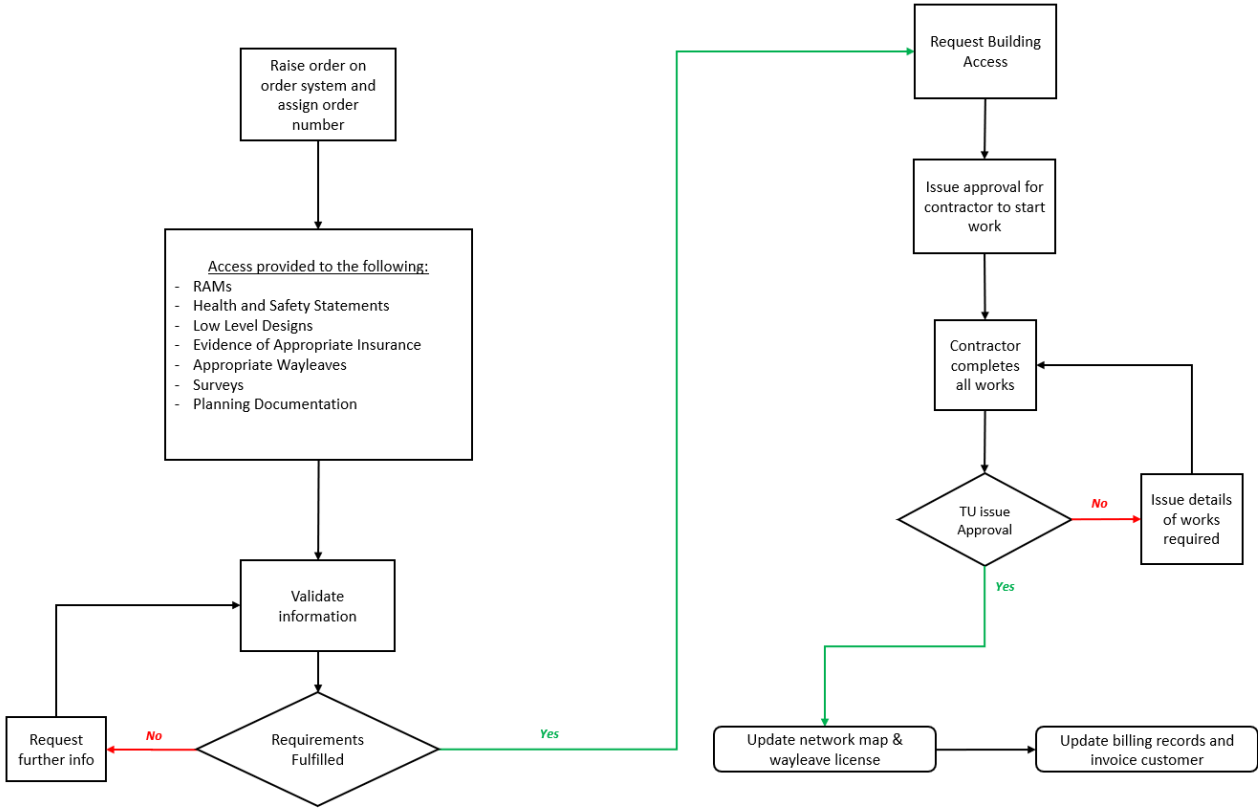
<i>Outside of the Canals</i>		
Code	Structure	Details
DCCMA-OC1-C	Rooftop Access with equipment room or cabinet	Basic package to include 3 antennae, 2 dishes and an equipment room.
DCCMA-OC1-C1	DCCMA-OC1-C Operator equipment upgrade	Upgrade to the equipment specified in the basic package.
DCCMA-OC1-C2	Power for rooftop installations	In some cases where provision of a separate power supply is too difficult or costly a metered supply may be provided.

11. Process Maps

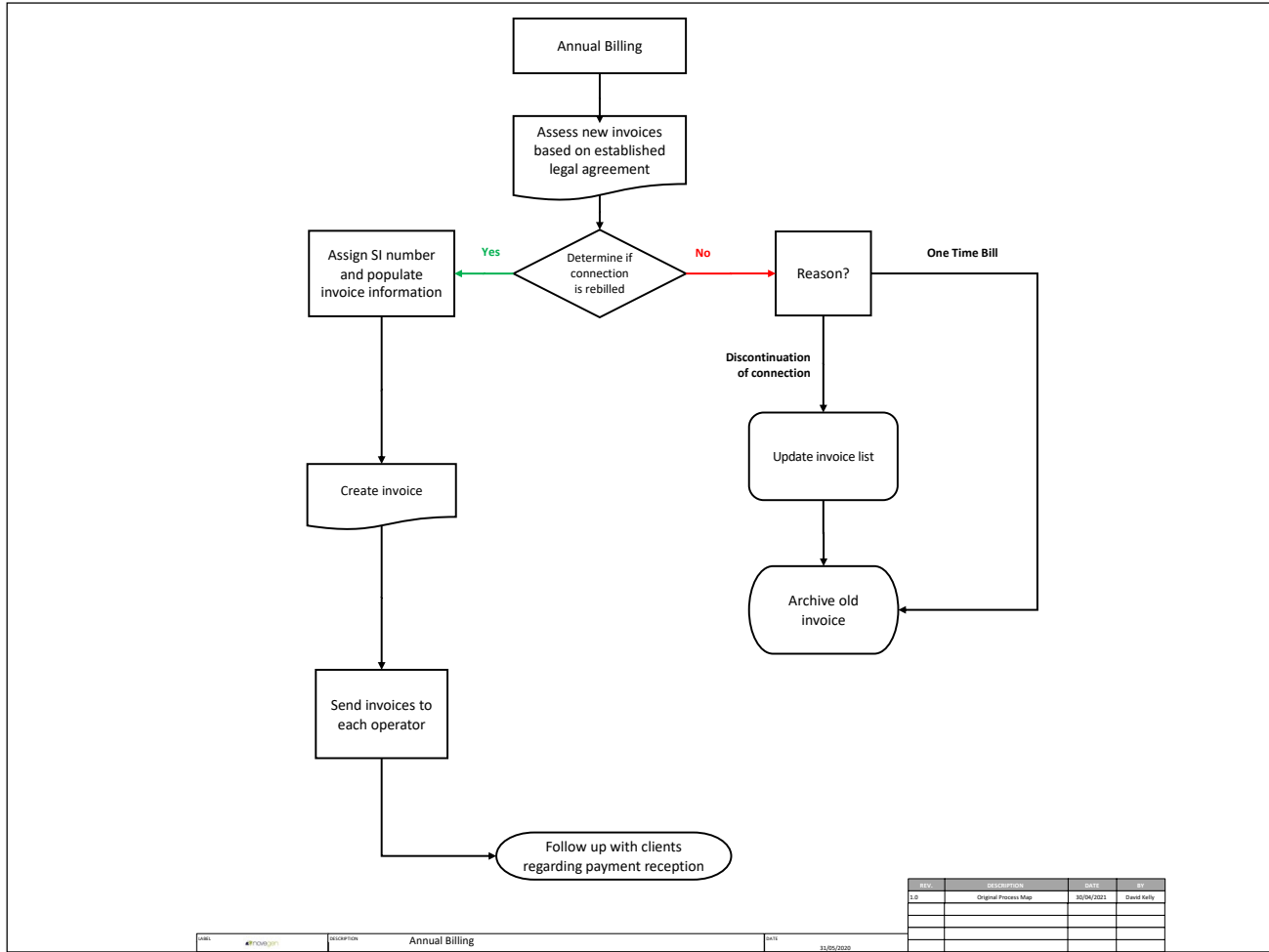
- **New Service Request**



• Service Delivery



- Annual Billing



DATE:	#817040/2021	DESCRIPTION:	Annual Billing	DATE:	31/05/2020
REV:	01	DESCRIPTION:	Original Process Map	DATE:	10/04/2021
REV:		DESCRIPTION:		DATE:	
REV:		DESCRIPTION:		DATE:	
REV:		DESCRIPTION:		DATE:	

Appendix A – Rate Cards

<i>Between the Canals</i>				
Code	Structure	Details	Annual Rental	Fee Detail
DCCMA-IC1-C	Rooftop Access with equipment room or cabinet	Basic package to include 3 antennae, 2 dishes and an equipment room.	€ 12,500.00	Annual renewal paid in advance
DCCMA-IC1-C1	DCCMA-IC1-C Operator equipment upgrade	Upgrade to the equipment specified in the basic package.	€ 2,500.00	Annual renewal paid in advance
DCCMA-IC1-C2	Power for rooftop installations	In some cases where provision of a separate power supply is too difficult or costly a metered supply may be provided.	TBC	TBC

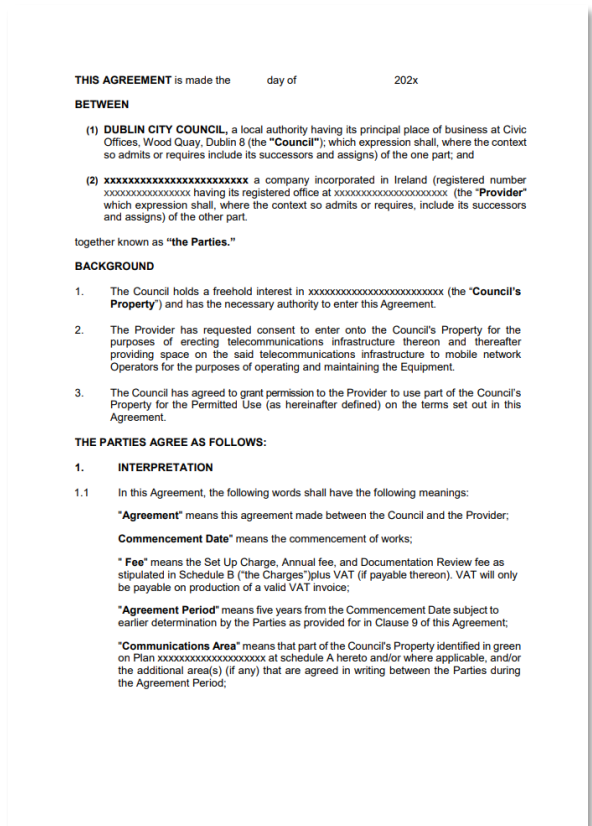
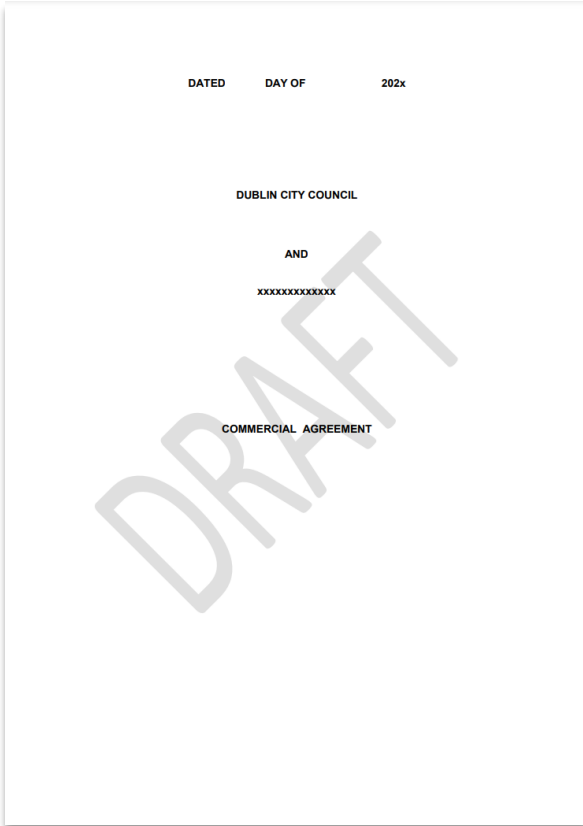
<i>Outside of the Canals</i>				
Code	Structure	Details	Annual Rental	Fee Detail
DCCMA-OC1-C	Rooftop Access with equipment room or cabinet	Basic package to include 3 antennae, 2 dishes and an equipment room.	€ 10,500.00	Annual renewal paid in advance
DCCMA-OC1-C1	DCCMA-OC1-C Operator equipment upgrade	Upgrade to the equipment specified in the basic package.	€ 2,000.00	Annual renewal paid in advance
DCCMA-OC1-C2	Power for rooftop installations	In some cases where provision of a separate power supply is too difficult or costly a metered supply may be provided.	TBC	TBC

The dishes specified are 600mm in diameter. Anything greater than this is deemed to be an upgrade.

The antenna heights are either 1.5m or 2m and 350mm wide.

The basic package is (i.e. DCCMA-xC1-B) is limited to 6x 4G RRUs or 3x 5G RRUs (5G RRUs can be up to 39Kg in weight and have a major effect on weight loading).

Appendix B – Commercial Agreement



Template Commercial Agreement available to download [here](#)

Email: support@dctu.zendesk.com