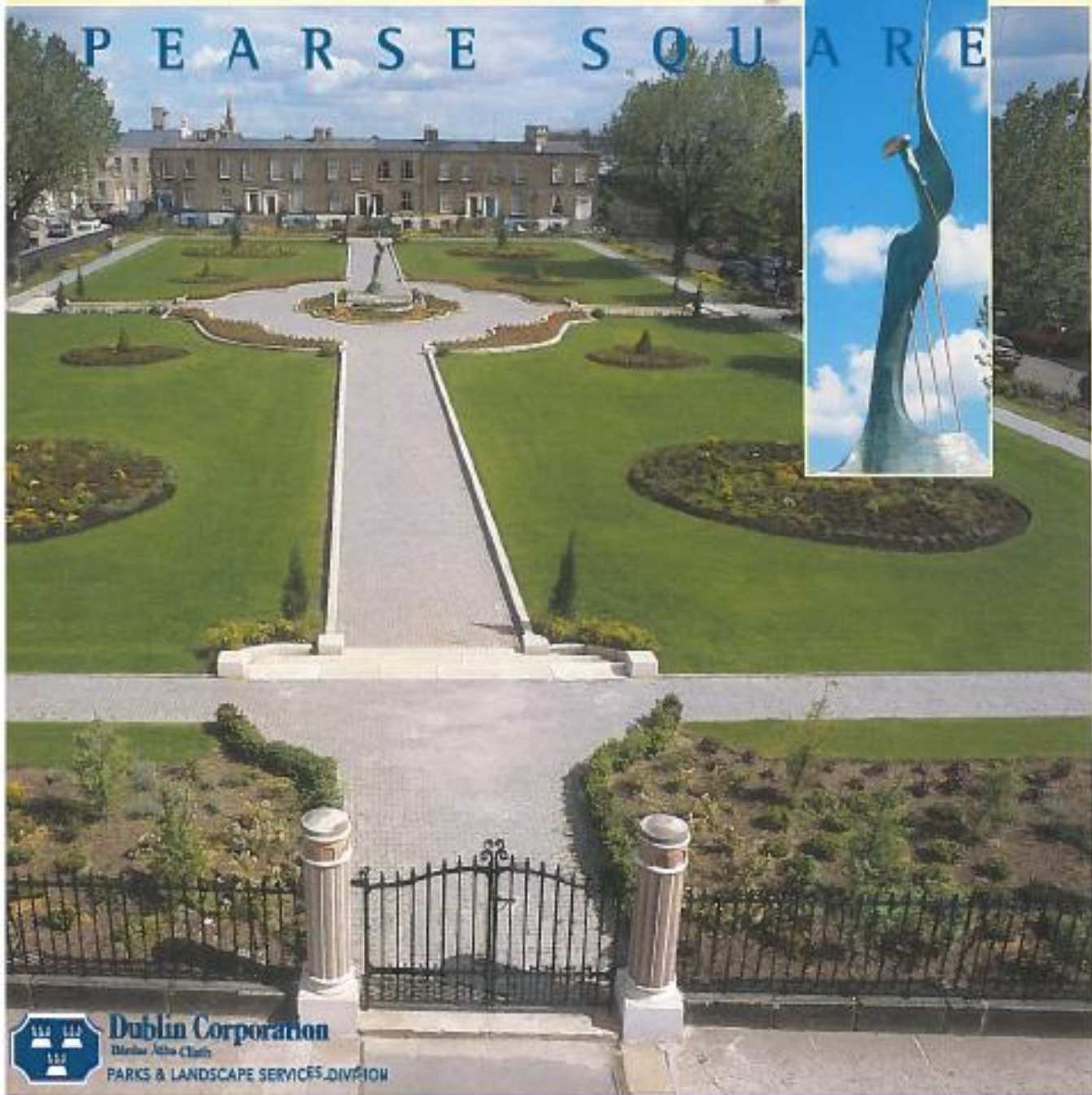
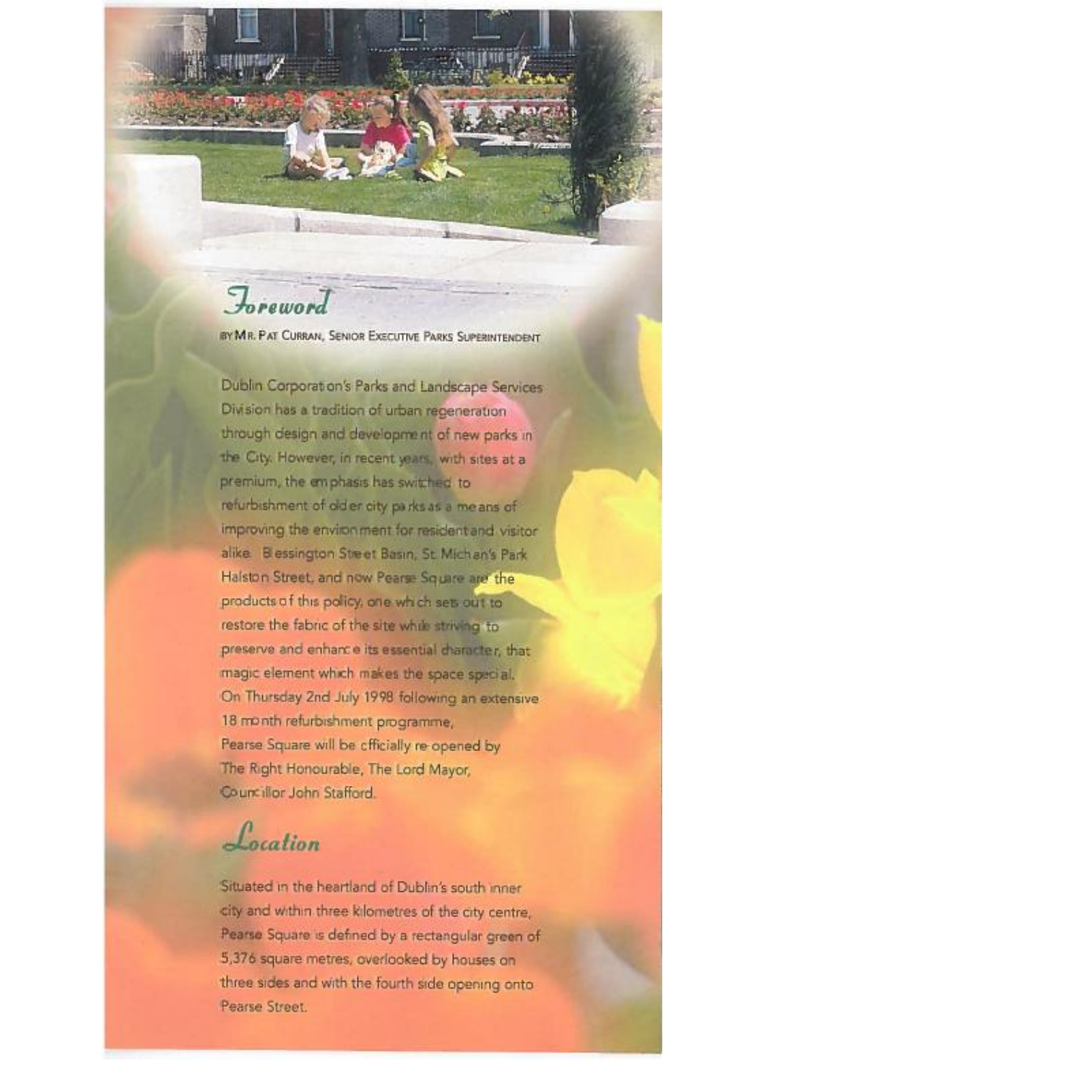


PEARSE SQUARE



Dublin Corporation
Dúibhir Átha Cliath
PARKS & LANDSCAPE SERVICES DIVISION

Pearse Square Refurbishment Project 1997 - 1998



Foreword

BY MR. PAT CURRAN, SENIOR EXECUTIVE PARKS SUPERINTENDENT

Dublin Corporation's Parks and Landscape Services Division has a tradition of urban regeneration through design and development of new parks in the City. However, in recent years, with sites at a premium, the emphasis has switched to refurbishment of older city parks as a means of improving the environment for resident and visitor alike. Blessington Street Basin, St. Michan's Park, Halston Street, and now Pearse Square are the products of this policy, one which sets out to restore the fabric of the site while striving to preserve and enhance its essential character, that magic element which makes the space special.

On Thursday 2nd July 1998 following an extensive 18 month refurbishment programme, Pearse Square will be officially re-opened by The Right Honourable, The Lord Mayor, Councillor John Stafford.

Location

Situated in the heartland of Dublin's south inner city and within three kilometres of the city centre, Pearse Square is defined by a rectangular green of 5,376 square metres, overlooked by houses on three sides and with the fourth side opening onto Pearse Street.

Pearse Square, formerly Queen's Square, comprising some 48 houses was built between 1838 and 1855 and in its day was a model development with amenities such as piped water, a mains sewage system and a private green for residents.



Historical Background

By the late 1880's Dublin Corporation, for public health reasons, was actively seeking to open spaces in the city as parks and following negotiations with the owner, Queen's Square was purchased for £200.

The green was laid out in typical Victorian pleasure garden style with informal paths leading to a central sunken feature area.

A bandstand was provided, trees and shrubs planted, and the Park officially opened to the public on 23d April 1889.



By the mid 1940's high population densities dictated the need for active recreational pursuits and this demand resulted in major changes for Pearse Square. A play-centre building, playground and tarmacadam kick-about area were introduced in line with other inner city parks, and thus active recreation dictated the square's layout for the next fifty years.

By the early 1990's the square had become dilapidated and the facilities seriously under-utilised. The local Residents Association, through its public representatives, lobbied for change in keeping with the square's history and passive character.

In 1991 a design for a formal garden at Pearse Square was prepared by the Parks and Landscape Services Division, and EU funding sought for its construction. Although no funding was secured, this design formed the basis of a refurbishment programme which commenced in 1997, with the full co-operation of City Councillors and the local Residents Association.

The design concept for the park now takes as its basis a formal layout which was noted on the 1838 ordnance survey map for the area.



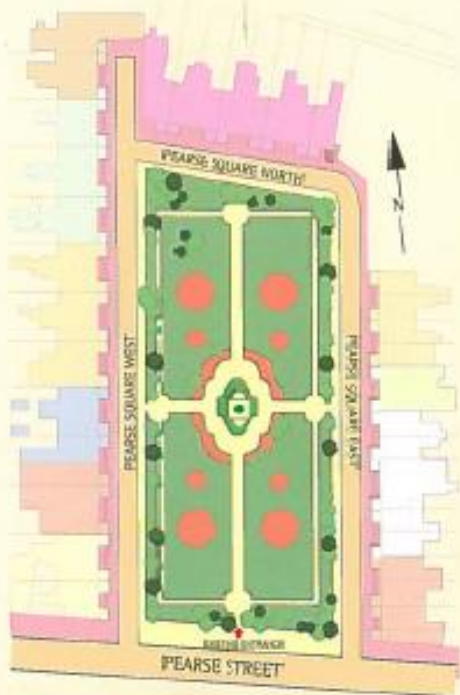
1998

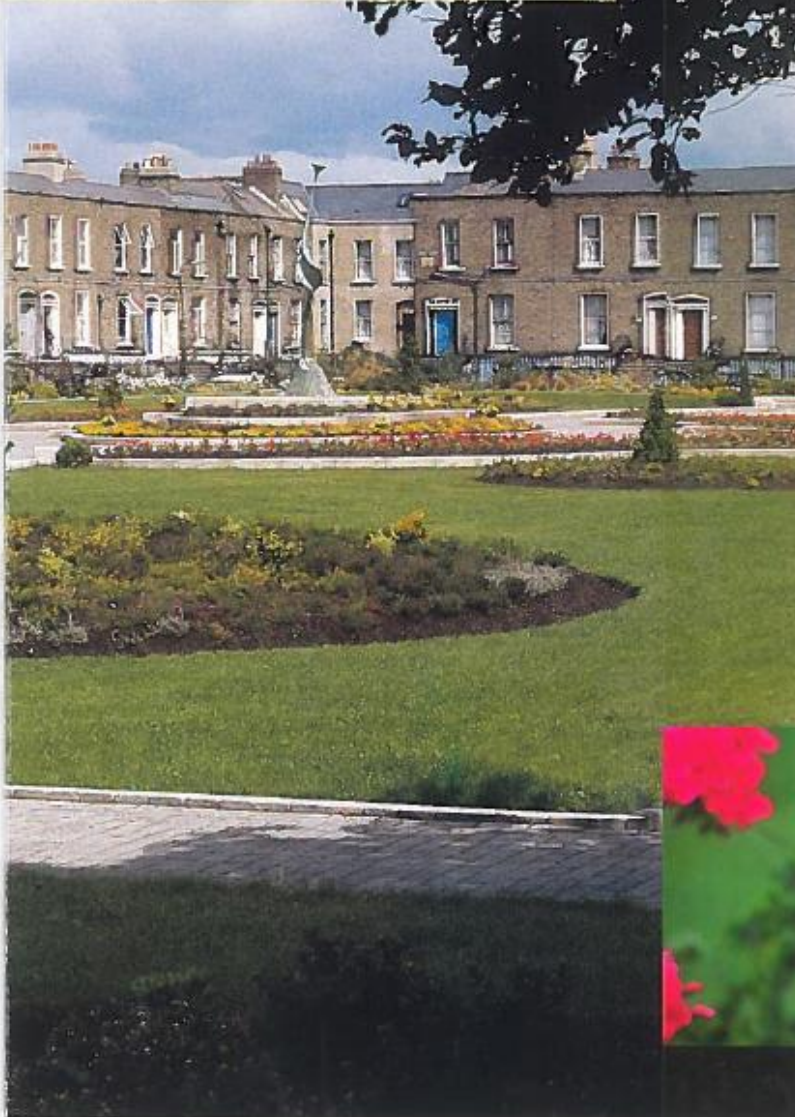
1940



1961

PEARSE SQUARE





Design Concept

The design concept for the park takes as its basis a formal layout for the square which was noted on the 1838 ordnance survey map for the area. It includes a sunken cruciform path system edged with Wicklow granite, leading to a raised central feature, surrounded by formal planting. Anticue granite piers with crafted wrought iron gates were used to define three pedestrian entrances. Cast iron seats were installed at suitable vantage points around the park, while castlestone pavers were utilised to define all footpath surfaces. The square was replanted with trees, ornamental shrubs, herbaceous perennials and colourful bedding plants. Finally, the Pearse Square Residents Association and the Parks and Landscape Services Division commissioned Sandra Bell to design a piece of contemporary Irish sculpture in Bronze entitled "Harmony" to define the central feature and complete the composition.

Construction

Construction was carried out by the Parks Division City Centre Direct Labour Unit, under Mr. J. O'Doherty, District Supervisor

Cost

The project cost of the order of £100,000, and was funded from the 1997/1998 Parks Development Works and Planning Contribution budgets

ACKNOWLEDGMENTS

Dublin Corporation Parks & Landscape

Services Division wishes to extend our gratitude to Dublin Corporation Management and Elected Members and thank the following for their significant contribution to the refurbishment of Pearse Square:

Pearse Square Residents Association:

Secretary, Ms. Eileen Dunna

Creedon Property Services

Mr. Martin Creedon, Mr. Gerry Butler

Roadstone Paving: Mr. Ben Bailey

Roie Stone Ltd.: Mr. Paddy Roie

Ms. Sandra Bell, Sculptor

CAST Foundry: Mr. Leo Higgins

Foxgreen Design: Mr. Jim Doolan

Athy Co. Operative Foundry Ltd.: Mr. Syl Bell

Senator Eoin Ryan

PARKS AND LANDSCAPE

SERVICES DIVISION STAFF

Parks Superintendent: Mr. G. Barry

Design and Project Management

Mr. P. Curran, Senior Executive

Parks Superintendent:

On site supervision: Mr. J. O'Doherty

District Supervisor of Parks

Horticulture: Mr. F. D'arcy, Foreman

General trades: Mr. T. Cunningham,

Chargehand Carpenter

Mr. L. Murphy, Stonemason

Mr. T. Adams, Blacksmith

Mr. W. Porter, Painter

General Operative Assistants

Mr. P. Kennedy, Mr. P. Dugnan

Machinery: Mr. T. Duffy

Trinity College

GEARMOY'S AN PHARSAIDH
PEARSE SQUARE 2

Pearse Square



Merrion Square

St Stephen's Green

Fitzwilliam Square

Concert Hall

Grand Canal



Dublin Corporation
Bairdas Átha Cliath

PARKS & LANDSCAPE SERVICES DIVISION