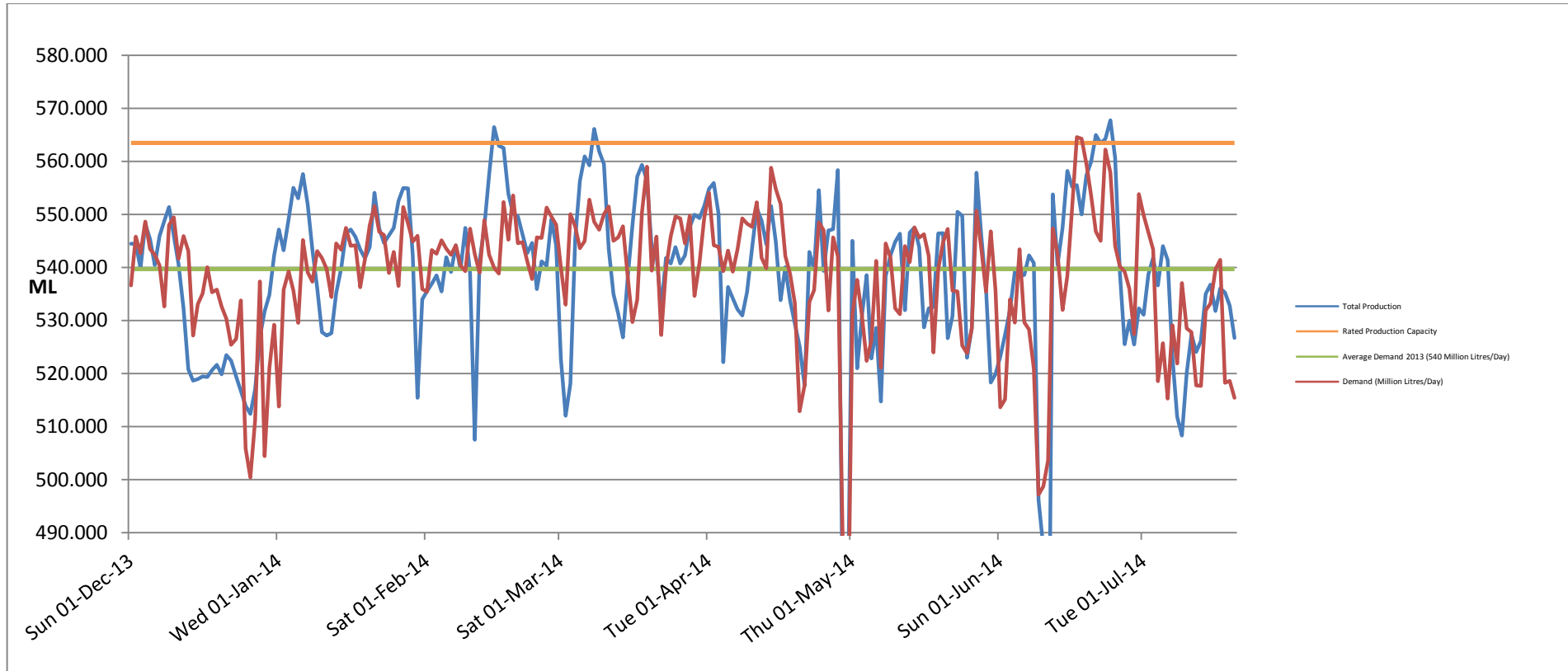


Demand for Drinking Water Dublin Region



❖ *Average Daily Demand for week-ending 20/07/2014 was 528MI/day. The Average Daily Demand for the year has been 539MI/day.*

❖ *This will be achieved by a combination of measures, including*

- Leakage Reduction by Local Authorities,
- Private-side Leakage Reduction by Consumers, and
- Water Conservation Measures by all