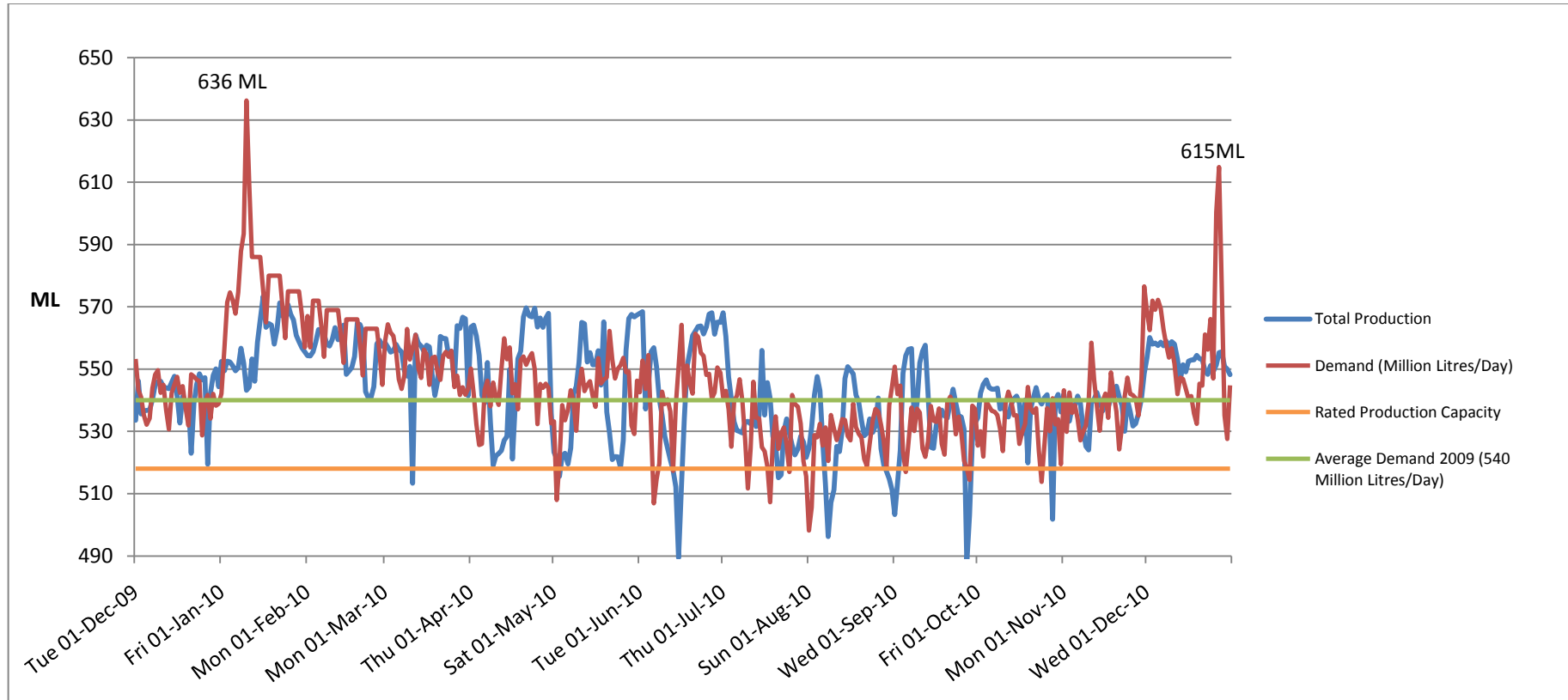


## Demand for Drinking Water Dublin Region 2010



❖ *Average Daily Demand for year-ending 31/12/2010 was 545 MI/day.*

❖ *Target average Daily Demand for 2010 is 540MI/day.*

❖ *This will be achieved by a combination of measures, including*

- Leakage Reduction by Local Authorities,
- Private-side Leakage Reduction by Consumers, and
- Water Conservation Measures by all.