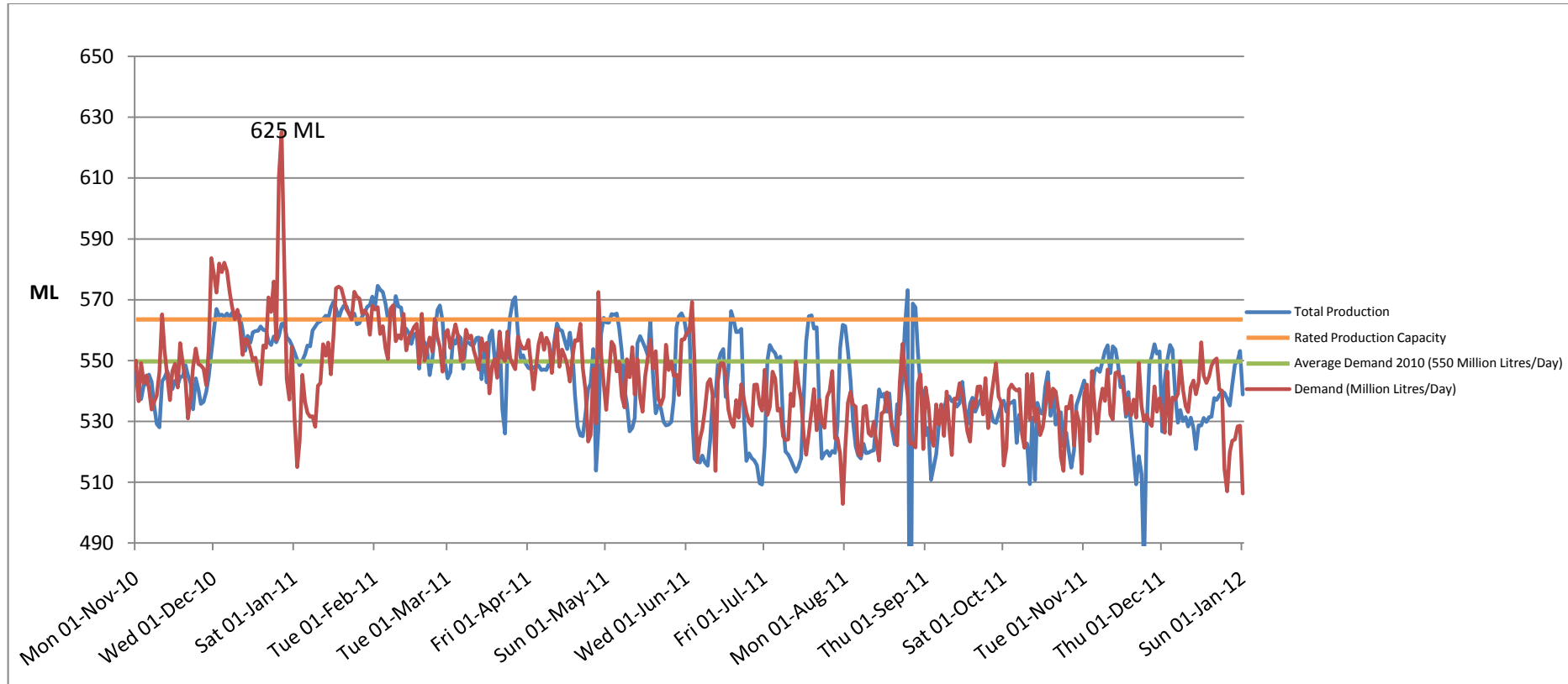


Demand for Drinking Water Dublin Region



- ❖ *Average Daily Demand for year-ending 31/12/2011 was 542 ML/day.*
- ❖ *Target average Daily Demand for 2011 was 545ML/day.*
- ❖ *This will be achieved by a combination of measures, including*
 - Leakage Reduction by Local Authorities,
 - Private-side Leakage Reduction by Consumers, and
 - Water Conservation Measures by all.