



Comhairle Cathrach
Bhaile Átha Cliath
Dublin City Council

Water Framework Directive Dublin Bay

Gerard O'Connell, Fellow CEng, MIEI,
Senior Engineer, Water Framework Directive
Office, Dublin City Council.

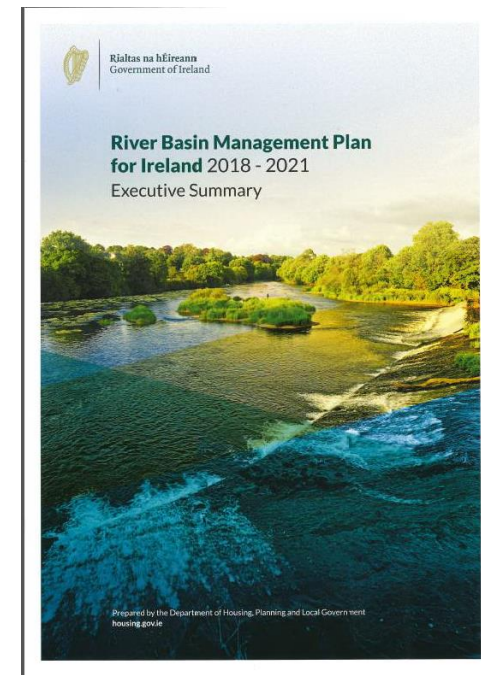
Environmental SPC Tuesday 27th November
2018



Comhairle Cathrach
Bhaile Átha Cliath
Dublin City Council

River Basin Management Plan 2018-2021

- RBMP, NIS, SEA and Exec Summary launched by Minister Eoghan Murphy on 17th April 2018.
- Communications through Local Authorities Water & Community Office (LAWCO) Feb – August 2017. 190 priority areas for action.
- Framework for co-ordination between LA's and public agencies to achieve water quality improvements.
- Local Authority Waters Support & Advice Team (LAWSAT), 35 Scientists + 30 Agricultural Advisors + 8 specialist advisors.
- An Foram Uisce to discuss, to raise awareness of water issues.





Comhairle Cathrach
Bhaile Átha Cliath
Dublin City Council

Water Framework Directive (WFD) 2000/60/EC SI.722/2003 AND SI.350/2014

Legal framework to *protect and restore* clean water and to ensure its long-term, sustainable use.

Three cycles

- 1st Cycle: 2010-2015 (minimal community engagement)
- 2nd Cycle: 2016-2021 (2 years behind)
- 3rd Cycle: 2022-2027

..... “to achieve good ecological status in all waters”.



Water Framework Directive (WFD) 2000

- Develop River Basin Management Plans –
 - Identify the pressures on water quality
 - Set out the programme of measures to address these significant pressures.
- Public consultation and engagement



Key Learnings from 1st Cycle Plan

- Need for better evidence base (EPA characterisation work)
- First cycle too ambitious
- ... “fragmented institutional structures”
- ... “no single body having ultimate responsibility”
 - Single RBD with national plan the responsibility of Minister
 - New governance & implementation structures
 - Local Authorities central to this
- Need for improved communication & public engagement
 - Consultation central to development of draft Plan
 - Specific resource developed through setting up the Local Authority Water and Community Office (LAWCO).



Objectives & Priorities

- “...Good ecological status for all waters”
- Priorities identified in the Plan:
 - Compliance with existing EU legislation (e.g. UWWTD)
 - Prevent deterioration
 - Meet water objectives for “protected areas”
 - Bathing areas, drinking waters, shellfish, SACs etc
 - Protect high status waters
 - Supporting measures implemented in approximately 600 to 700 prioritised water bodies
 - 30 Pilot Study Areas.



Programme of

- Agriculture
- Septic tanks
- **Urban waste water, IW**
- Forestry
- Extractive industry incl. peat harvesting
- **Invasive alien species**

Measures (Chapter 7 of Plan)

- **Physical modification**
- Water abstractions
- **Industry**
- **Waste**
- **Historically polluted sites**
- Water treatment
- **Others**



Implementation Strategy

- Implementation of basic measures
- Supporting measures targeted at priority water bodies
- Regional structure in coordinating resources across agencies and other stakeholders
- Evidence based approach
- Community engagement and awareness

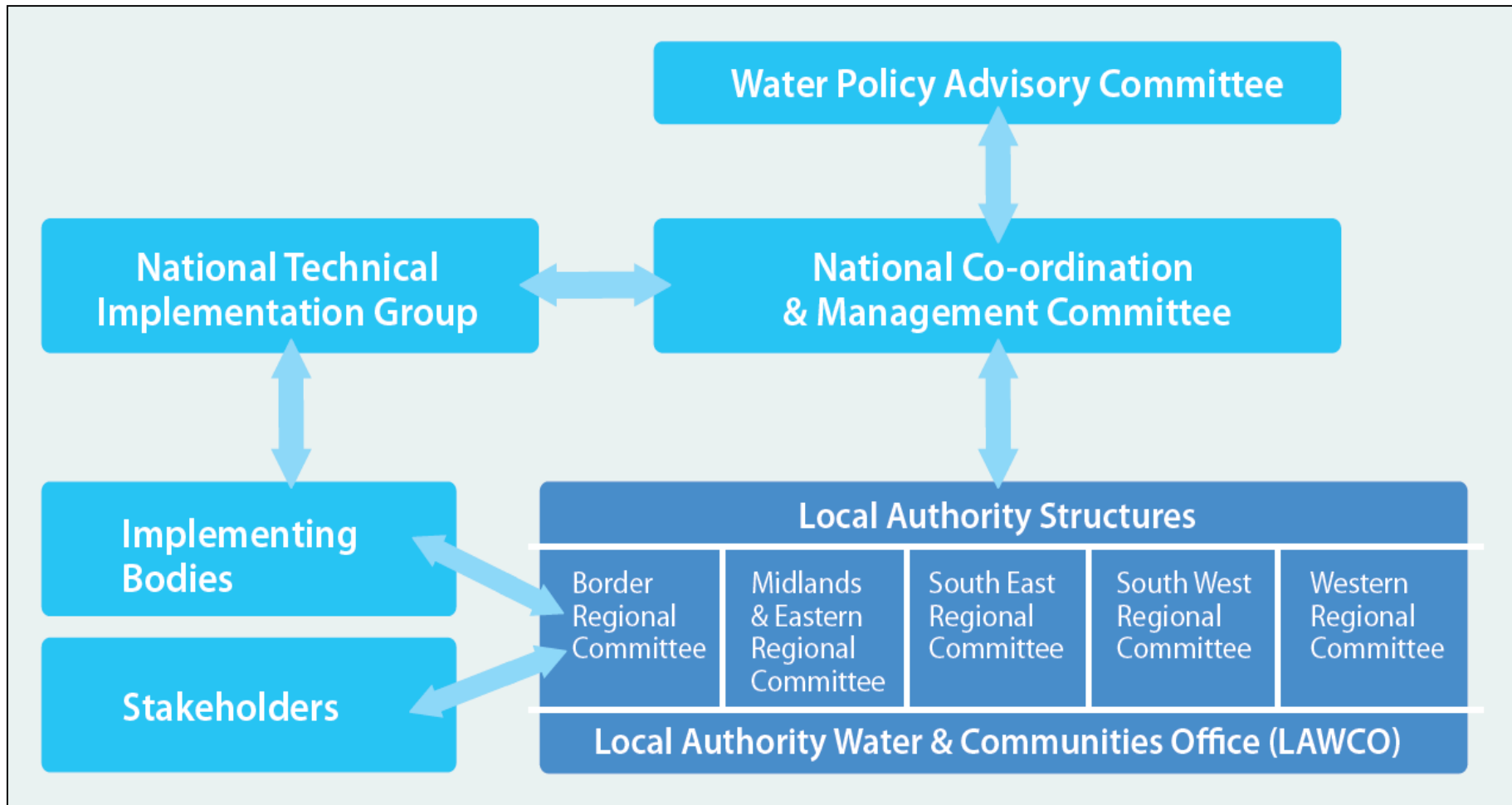
(Local Authority Waters and Communities Office -
(LAWCO))

(National Water Forum)

“.....the right measures in the right place”



Implementation Structure





Comhairle Cathrach
Bhaile Átha Cliath
Dublin City Council

Role of Local Authorities

- Coordinated delivery of measures at regional and local level
- Tracking progress and effectiveness of measures
- Annual reporting of progress
- Ensuring public and stakeholder engagement in implementation
- Integrated approach across functional areas
- Supporting national policy development and implementation



Communication & Engagement

- Previous consultations highlighted need for:
 - (i) Better engagement in water policy at national level
 - (ii) Facilitation of public and stakeholder engagement at local level
- Response to above in draft RBMP
 - (i) **National Water Forum** will feed into WPAC and other structures
 - (ii) Local Authority Waters and Community Office (LAWCO) to drive public participation and consultation
 - (iii) EPA/DHPCLG/LA networking & knowledge sharing
 - (iv) catchments.ie website



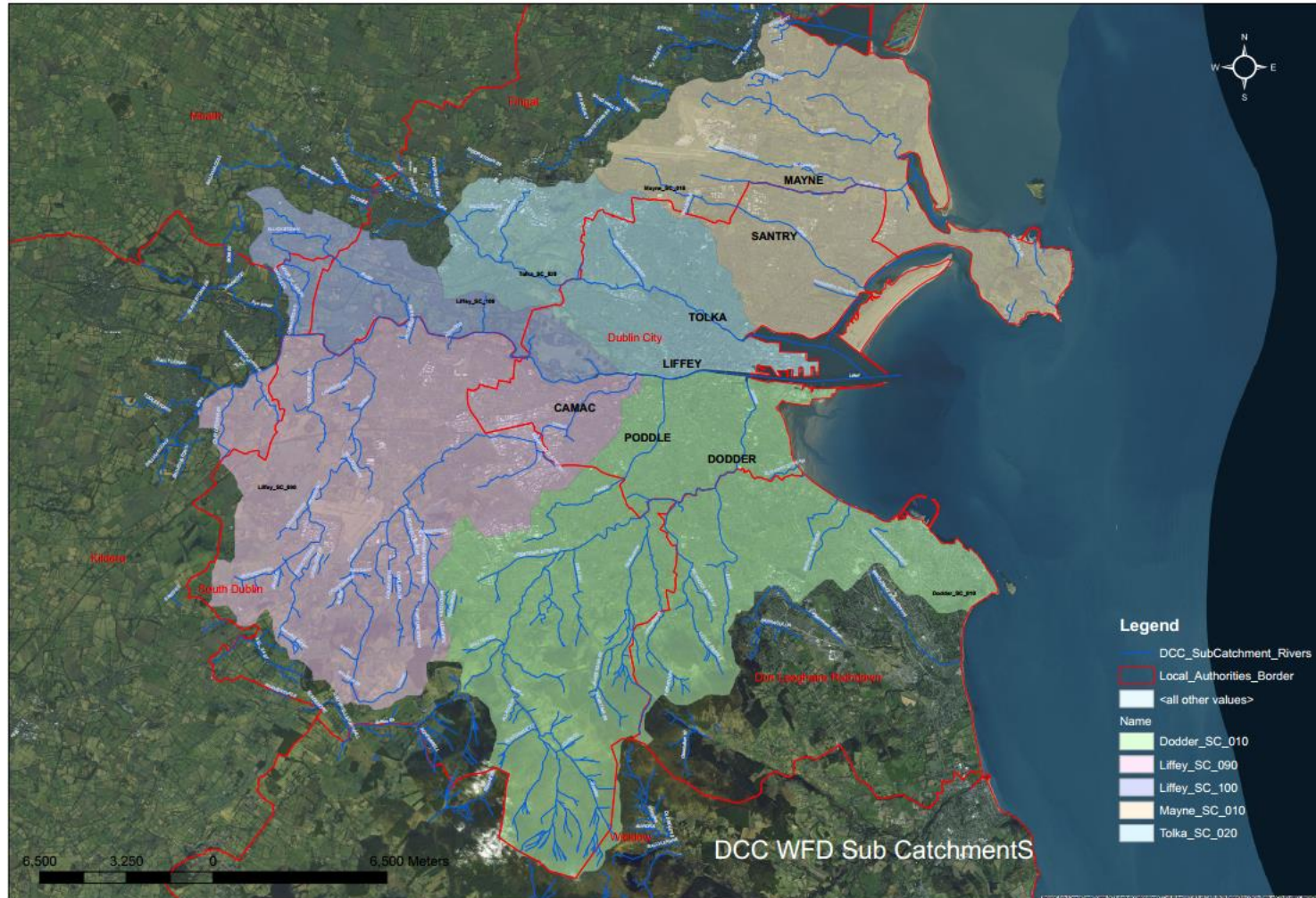
What does this mean for Dublin Bay

- Seven rivers feeding into Dublin Bay.
- Liffey – Moderate
- Tolka – Poor/Unassigned
- Dodder- Good/Moderate Priority River
- Santry – Poor/Unassigned Priority River
- Camac – Good/Moderate/Poor DCC Priority River. Catchment Engineer
- Poddle - Unassigned
- Mayne – Poor/Unassigned
- Estuaries - Poor. Business case for Estuaries and Coastal Study Eng.
- Dublin Bay – Good. National Marine Planning Framework – Baseline



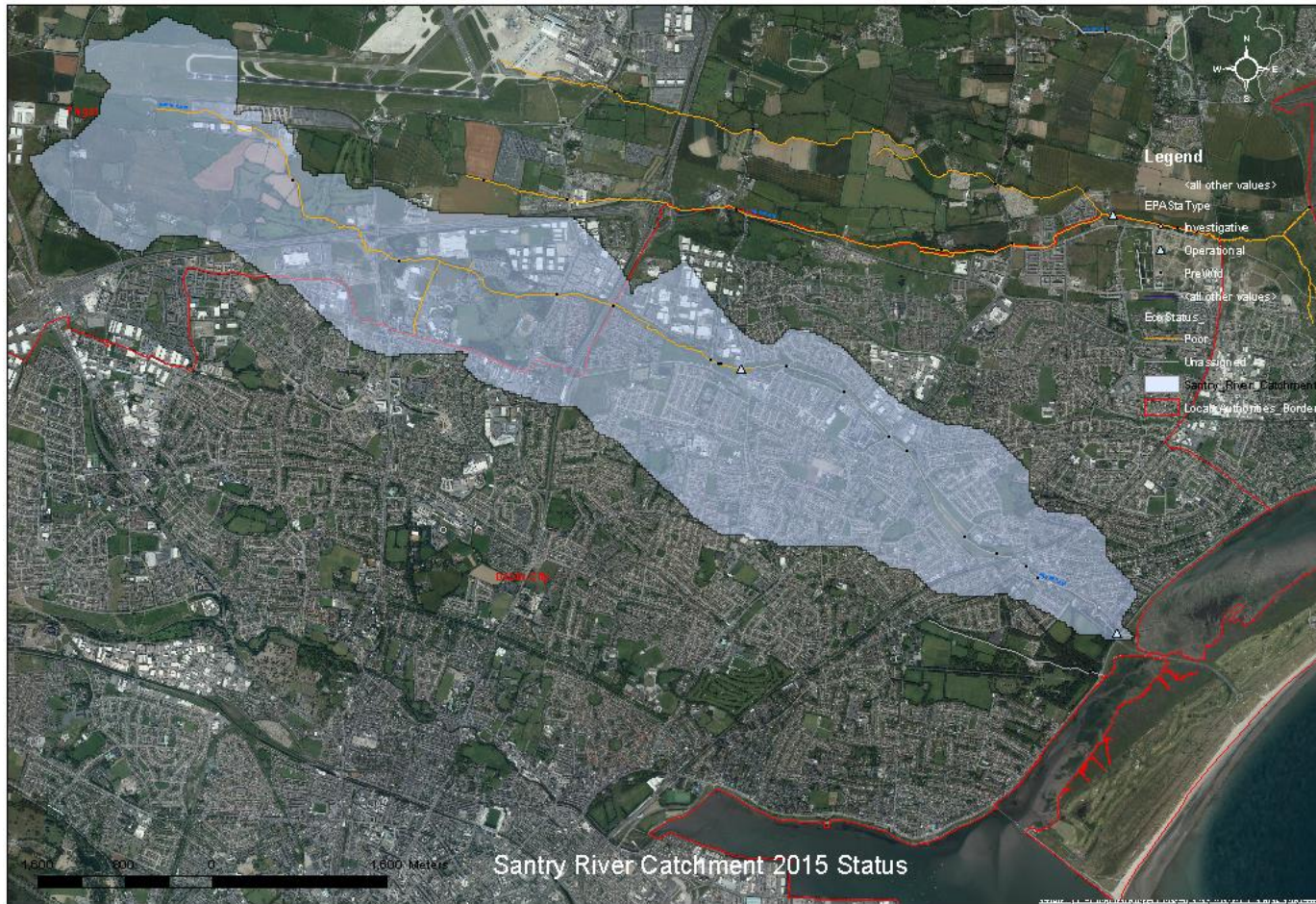
Comhairle Cathrach
Bhaile Átha Cliath
Dublin City Council

Seven Dublin City River Sub catchments.





Proposed Pilot Study 1 – Santry/Mayne River





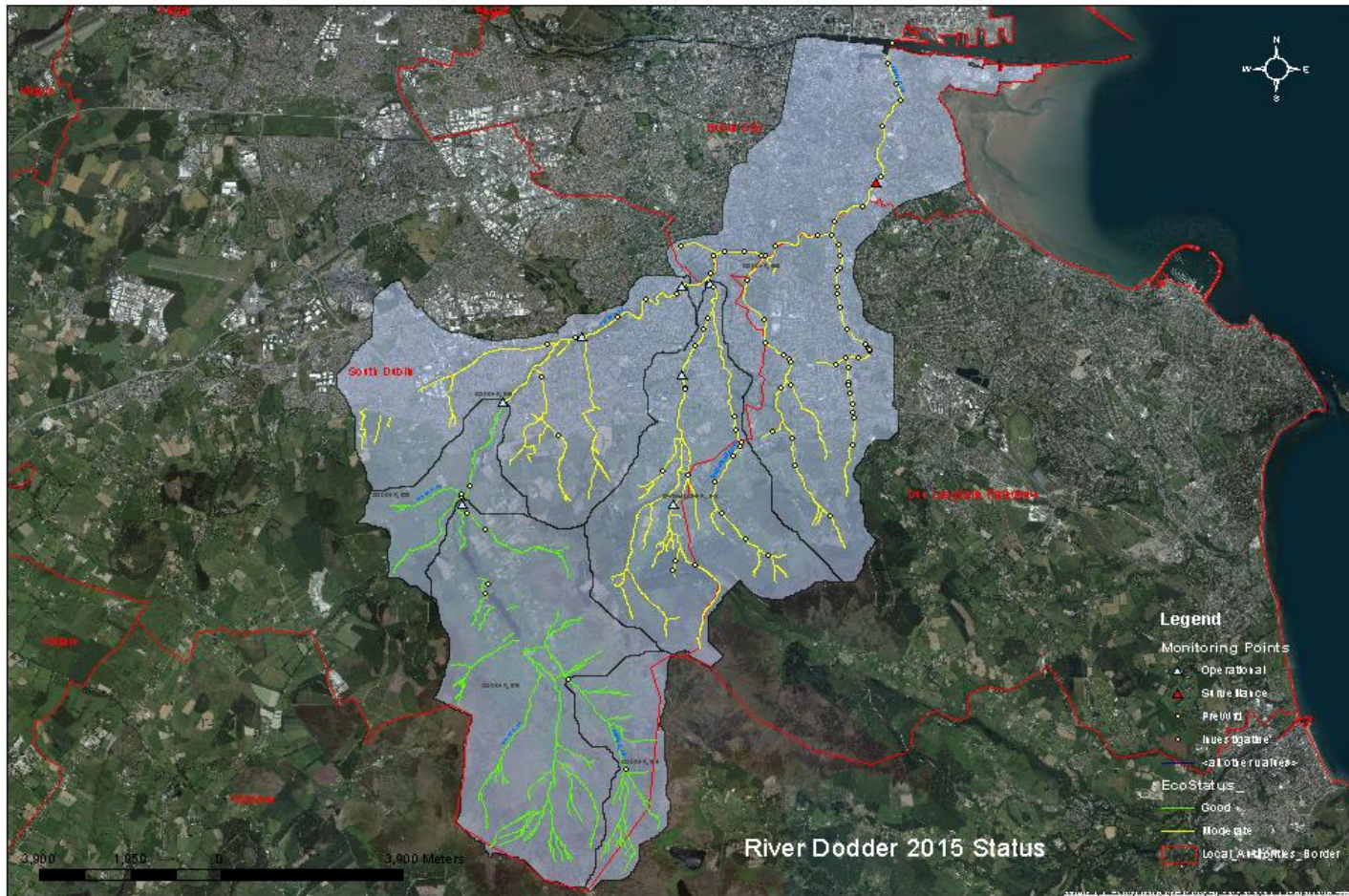
Comhairle Cathrach
Bhaile Átha Cliath
Dublin City Council

Santry/Mayne/Naniken

- Catchment Engineer, reduce pressures.
- Promote Green Infrastructure
- Intercept surface water pollutant runoff
- Liaise with Fingal, IW, NTA, LAWCO, LAWCAT.
- Liaise with DCC Housing, Planning, Parks, Roads, Flooding, Traffic, Surface water & Drainage. ICW St. Annes golf club installed.
- Develop green infrastructure Strategy



Proposed Pilot Study 2 – Dodder River





Dodder

- Catchment Engineer, reduce pressures.
- Promote Green Infrastructure & Develop Strategy
- Intercept surface water pollutant runoff
- Liaise with SDCC, DLRCC, IW, NTA, LAWCO, LAWCAT, IFI and many others.
- Liaise with DCC Housing, Planning, Parks, Roads, Flooding, Traffic, Surface water & Drainage. Partial ICW proposed in Elm Park golf club.
- Investigate pollution to Sandymount & Merrion



Comhairle Cathrach
Bhaile Átha Cliath
Dublin City Council

End.