

Kilmainham Mill



Comhairle Cathrach
Bhaile Átha Cliath
Dublin City Council

Dublin City Council Welcomes

SAVE KILMAINHAM MILL

An aerial photograph of the Kilmainham Mill, a large, multi-story stone building with a prominent tall brick chimney. The mill is surrounded by dense green trees and vegetation. The text "SAVE KILMAINHAM MILL" is overlaid in large, bold, red capital letters across the center of the image. The image is framed by a blue and white geometric design in the top right corner.

December 10th 2018

Dublin City Council Takes Ownership



Steering Group in place

3 project working group

- ▶ Donncha O'Dulaing - Senior Executive Officer
- ▶ Darragh Cunningham - Project Manager

- ▶ Bruce Philips - S.E.O South Central Area
- ▶ Deirdre Ní Raghallaigh - S.E.O City Managers Office
- ▶ Jackie O'Reilly - CRES Dept Administrative Officer
- ▶ Mary McDonald - Conservation section
- ▶ Iseult Byrne - CEO Dublin Culture Connects / Henrietta St.
- ▶ Steven O'Gara - Local Enterprise Office



Initial Issues faced

- ▶ Health and Safety - Electrical / General
- ▶ Security - 24/7 static security
- ▶ Buddleia Removal - MCD Landscapes
- ▶ Roof Water Pooling - Clearing of drains and water
- ▶ Mains Water - Leak discovered in main building
- ▶ Gates - New hinges made



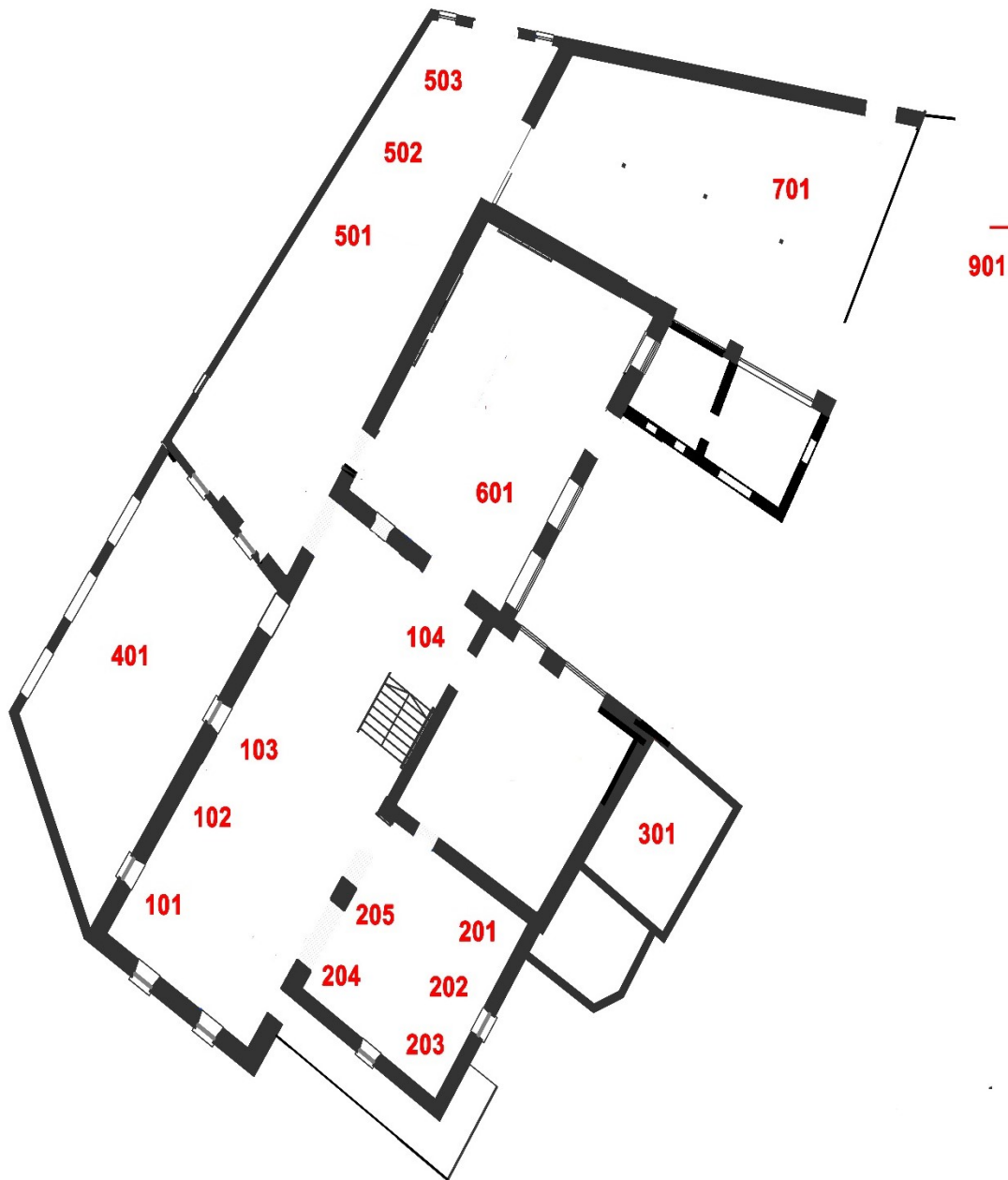


Step 2: Site Safety Foliage Clearance

Basic enabling works to allow safe access around the building







FH Machine no: 102

Tandem machine: 03

Type: Scouring dolly

Maker: James Bailey (Slaithwaite, Huddersfield, West Yorks).

Date: 1938

Installed:

Overview:

Rope scouring dolly for removing grease and oil from cloth. Made by James Bailey (Slaithwaite, Huddersfield, West Yorkshire). Dated 1938.

Heritage evaluation:

Technical merit: X

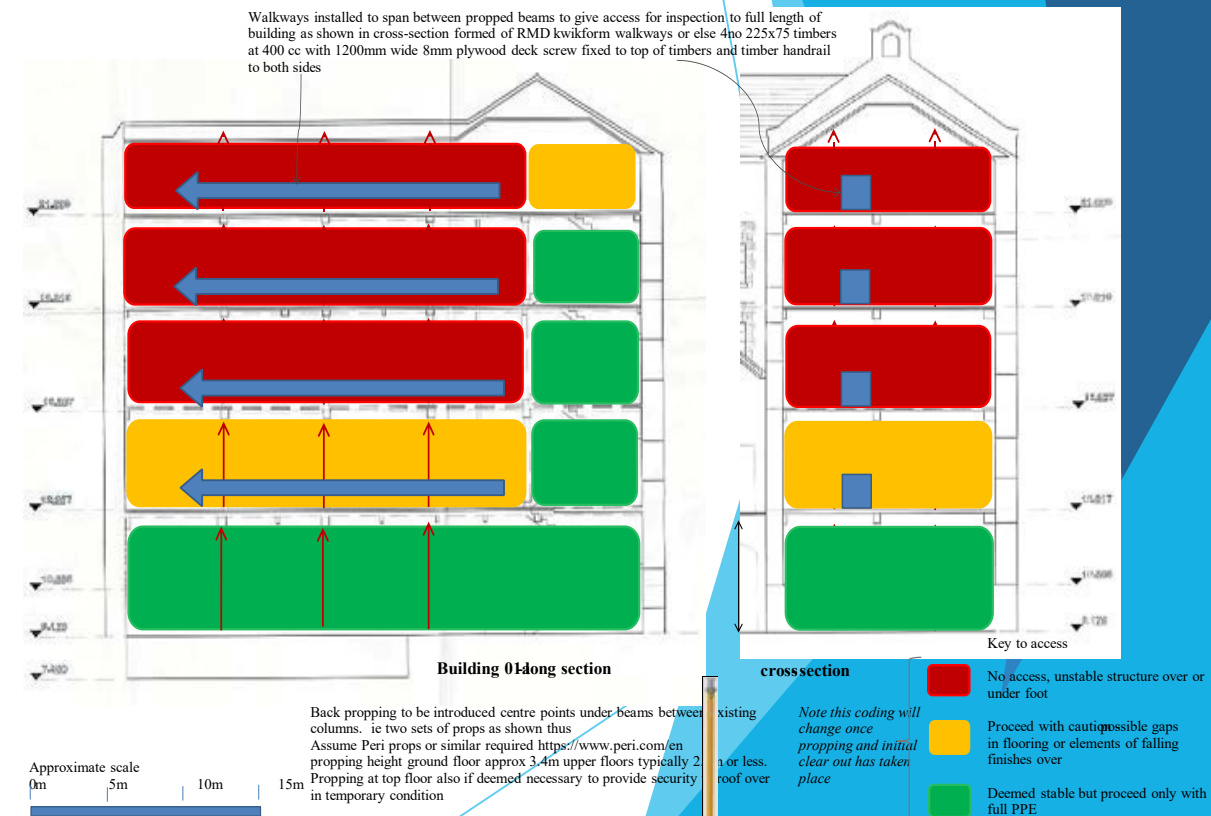
Kilmainham merit: X

Textile merit: X



Historical Structures Fund (HSF)

- ▶ DCC has applied for €200,000 as part of a €551,000 initial investment.
- ▶ Emergency stabilisation works to include:
- ▶ Propping of floors.
- ▶ Re-slating of roofs (using reclaimed roof tiles).
- ▶ Management of machinery
- ▶ Removal of debris and guano.
- ▶ Mesh to cover windows.
- ▶ Removal of Ivy from outer building.
- ▶ Address drainage issues.



Expert Help

The dream team

- ▶ Howley Hayes Architects
- ▶ Lisa Eddin - Cora structural Engineers
- ▶ Austin Reddy Quantity Surveyors
- ▶ Franc Myles - Archaeologist
- ▶ MCD Landscapes



AUSTIN REDDY & COMPANY



Future Usage

