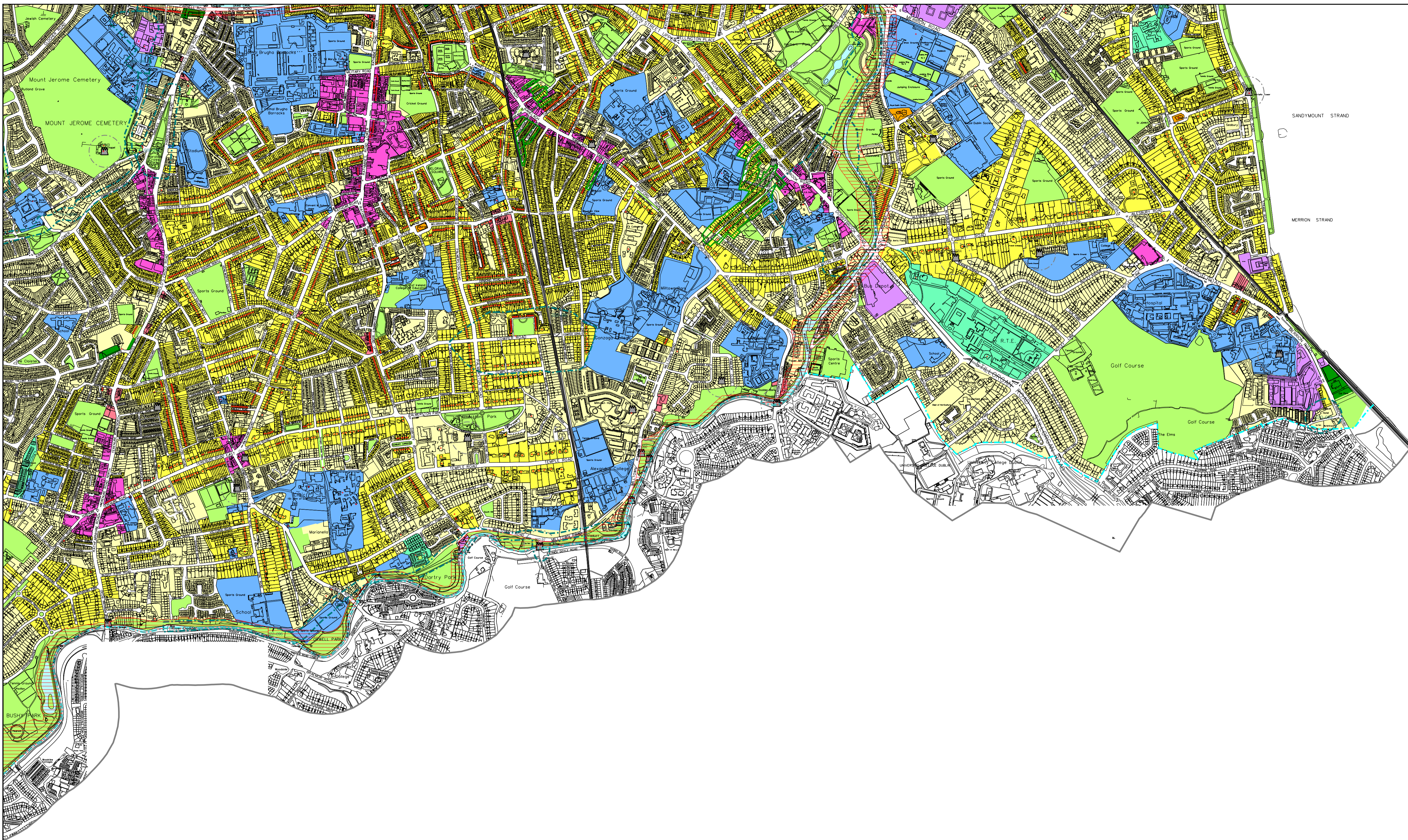
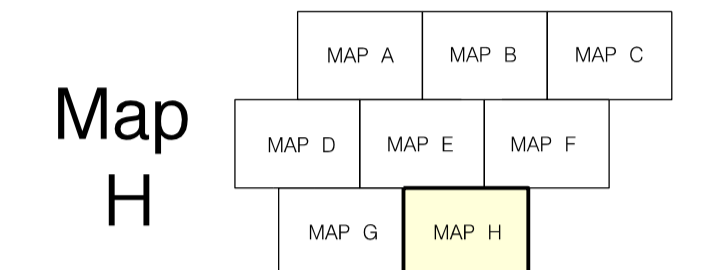


Dublin City Development Plan 2022-2028

DRAFT



LAND USE ZONING OBJECTIVES⁴

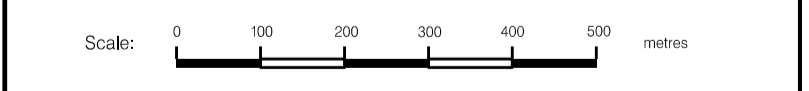
- Zone Z1 Sustainable Residential Neighbourhoods
- Zone Z2 Residential Neighbourhoods (Conservation Areas)
- Zone Z3 Neighbourhood Centres
- Zone Z4 Key Urban Villages / Urban Villages
- Zone Z5 City Centre
- Zone Z6 Employment/Enterprise
- Zone Z7 Employment (Heavy)
- Zone Z8 Georgian Conservation Areas
- Zone Z9 Amenity/Open Space Lands/Green Network
- Zone Z10 Inner Suburban and Inner City Sustainable Mixed-Uses
- Zone Z11 Waterways Protection
- Zone Z12 Institutional Land (Future Development Potential)
- Zone Z14 Strategic Development and Regeneration Areas (SDRAs)
- Zone Z15 Community and Social Infrastructure

SPECIFIC OBJECTIVES

- Conservation Areas
- Architectural Conservation Areas
- Protected Structures, [RPS takes precedence]
- Sites of Archaeological Interest*
- Zones of Archaeological Interest*
- National Monuments
- COMAH establishments (SEVESO establishments)
- LAP (Local Area Plan) & SDZ (Special Development Zone)
- Dublin Airport Outer Public Safety Zone

1. Map to be read in conjunction with the written statement
 2. Roads objectives are shown diagrammatically
 3. *Based on the Record of Monuments and Places (RMP). For additional information see www.archaeology.ie
 4. See written statement, Chapter 14 for full zoning text

Includes Ordnance Survey Ireland data reproduced under license number 2017/00040/0001 to Dublin City Council and Government of Ireland copyright.
 © Ordnance Survey Ireland, 2021



John O'Hara
Dublin City Planner