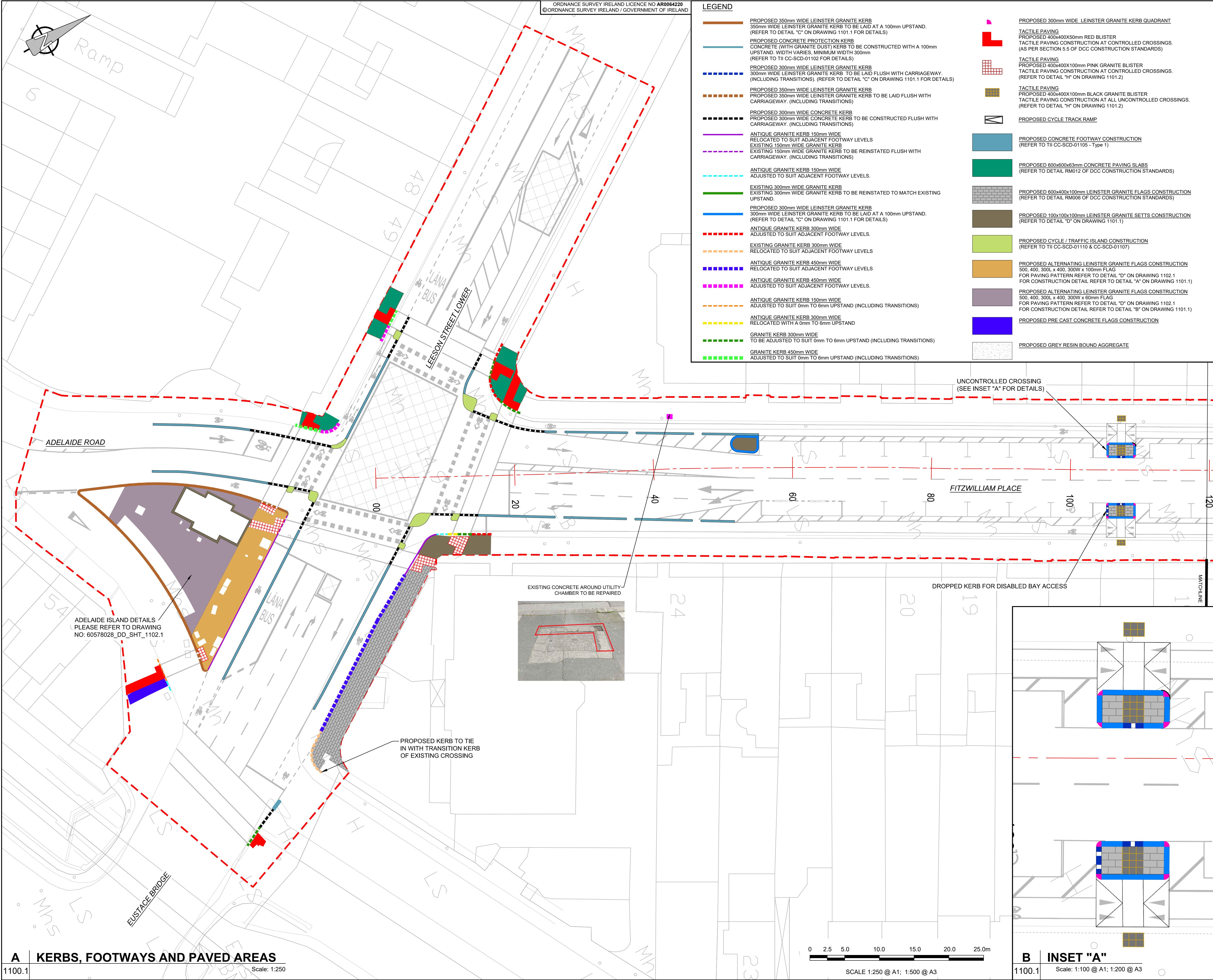


LEGEND

- PROPOSED 350mm WIDE LEINSTER GRANITE KERB  
350mm WIDE LEINSTER GRANITE KERB TO BE LAID AT A 100mm UPSTAND.  
(REFER TO DETAIL "C" ON DRAWING 1101.1 FOR DETAILS)
- PROPOSED CONCRETE PROTECTION KERB  
CONCRETE (WITH GRANITE DUST) KERB TO BE CONSTRUCTED WITH A 100mm UPSTAND. WIDTH VARIES. MINIMUM WIDTH 300mm  
(REFER TO TII CC-SCD-01102 FOR DETAILS)
- PROPOSED 300mm WIDE LEINSTER GRANITE KERB  
300mm WIDE LEINSTER GRANITE KERB TO BE LAID FLUSH WITH CARRIAGEWAY.  
(INCLUDING TRANSITIONS). (REFER TO DETAIL "C" ON DRAWING 1101.1 FOR DETAILS)
- PROPOSED 350mm WIDE LEINSTER GRANITE KERB  
PROPOSED 350mm WIDE LEINSTER GRANITE KERB TO BE LAID FLUSH WITH CARRIAGEWAY. (INCLUDING TRANSITIONS)
- PROPOSED 300mm WIDE CONCRETE KERB  
PROPOSED 300mm WIDE CONCRETE KERB TO BE CONSTRUCTED FLUSH WITH CARRIAGEWAY. (INCLUDING TRANSITIONS)
- ANTIQUE GRANITE KERB 150mm WIDE  
RELOCATED TO SUIT ADJACENT FOOTWAY LEVELS
- EXISTING 150mm WIDE GRANITE KERB  
EXISTING 150mm WIDE GRANITE KERB TO BE REINSTATED FLUSH WITH CARRIAGEWAY. (INCLUDING TRANSITIONS)
- ANTIQUE GRANITE KERB 150mm WIDE  
ADJUSTED TO SUIT ADJACENT FOOTWAY LEVELS.
- EXISTING 300mm WIDE GRANITE KERB  
EXISTING 300mm WIDE GRANITE KERB TO BE REINSTATED TO MATCH EXISTING UPSTAND.
- PROPOSED 300mm WIDE LEINSTER GRANITE KERB  
300mm WIDE LEINSTER GRANITE KERB TO BE LAID AT A 100mm UPSTAND.  
(REFER TO DETAIL "C" ON DRAWING 1101.1 FOR DETAILS)
- ANTIQUE GRANITE KERB 300mm WIDE  
ADJUSTED TO SUIT ADJACENT FOOTWAY LEVELS.
- EXISTING GRANITE KERB 300mm WIDE  
RELOCATED TO SUIT ADJACENT FOOTWAY LEVELS
- ANTIQUE GRANITE KERB 450mm WIDE  
RELOCATED TO SUIT ADJACENT FOOTWAY LEVELS
- ANTIQUE GRANITE KERB 450mm WIDE  
ADJUSTED TO SUIT ADJACENT FOOTWAY LEVELS.
- ANTIQUE GRANITE KERB 150mm WIDE  
ADJUSTED TO SUIT 0mm TO 6mm UPSTAND (INCLUDING TRANSITIONS)
- ANTIQUE GRANITE KERB 300mm WIDE  
RELOCATED WITH A 0mm TO 6mm UPSTAND
- GRANITE KERB 300mm WIDE  
TO BE ADJUSTED TO SUIT 0mm TO 6mm UPSTAND (INCLUDING TRANSITIONS)
- GRANITE KERB 450mm WIDE  
ADJUSTED TO SUIT 0mm TO 6mm UPSTAND (INCLUDING TRANSITIONS)
- PROPOSED 300mm WIDE LEINSTER GRANITE KERB QUADRANT  
300mm WIDE LEINSTER GRANITE KERB QUADRANT
- TACTILE PAVING  
PROPOSED 400x400x50mm RED BLISTER  
TACTILE PAVING CONSTRUCTION AT CONTROLLED CROSSINGS.  
(AS PER SECTION 5.5 OF DCC CONSTRUCTION STANDARDS)
- TACTILE PAVING  
PROPOSED 400x400x100mm PINK GRANITE BLISTER  
TACTILE PAVING CONSTRUCTION AT CONTROLLED CROSSINGS.  
(REFER TO DETAIL "H" ON DRAWING 1101.2)
- TACTILE PAVING  
PROPOSED 400x400x100mm BLACK GRANITE BLISTER  
TACTILE PAVING CONSTRUCTION AT ALL UNCONTROLLED CROSSINGS.  
(REFER TO DETAIL "H" ON DRAWING 1101.2)
- PROPOSED CYCLE TRACK RAMP
- PROPOSED CONCRETE FOOTWAY CONSTRUCTION  
(REFER TO TII CC-SCD-01105 - Type 1)
- PROPOSED 600x600x63mm CONCRETE PAVING SLABS  
(REFER TO DETAIL RM012 OF DCC CONSTRUCTION STANDARDS)
- PROPOSED 600x400x100mm LEINSTER GRANITE FLAGS CONSTRUCTION  
(REFER TO DETAIL RM006 OF DCC CONSTRUCTION STANDARDS)
- PROPOSED 100x100x100mm LEINSTER GRANITE SETTS CONSTRUCTION  
(REFER TO DETAIL "H" ON DRAWING 1101.1)
- PROPOSED CYCLE / TRAFFIC ISLAND CONSTRUCTION  
(REFER TO TII CC-SCD-01110 & CC-SCD-01107)
- PROPOSED ALTERNATING LEINSTER GRANITE FLAGS CONSTRUCTION  
500, 400, 300L x 400, 300W x 100mm FLAG  
FOR PAVING PATTERN REFER TO DETAIL "D" ON DRAWING 1102.1  
FOR CONSTRUCTION DETAIL REFER TO DETAIL "A" ON DRAWING 1101.1)
- PROPOSED ALTERNATING LEINSTER GRANITE FLAGS CONSTRUCTION  
500, 400, 300L x 400, 300W x 60mm FLAG  
FOR PAVING PATTERN REFER TO DETAIL "D" ON DRAWING 1102.1  
FOR CONSTRUCTION DETAIL REFER TO DETAIL "B" ON DRAWING 1101.1)
- PROPOSED PRE-CAST CONCRETE FLAGS CONSTRUCTION
- PROPOSED GREY RESIN BOUND AGGREGATE

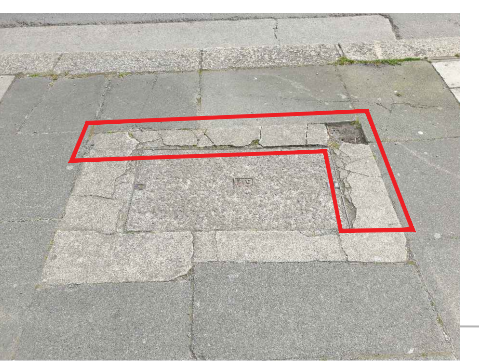


UNCONTROLLED CROSSING  
(SEE INSET "A" FOR DETAILS)

FITZWILLIAM PLACE

DROPPED KERB FOR DISABLED BAY ACCESS

EXISTING CONCRETE AROUND UTILITY  
CHAMBER TO BE REPAIRED



PROPOSED KERB TO TIE  
IN WITH TRANSITION KERB  
OF EXISTING CROSSING

ADELAIDE ISLAND DETAILS  
PLEASE REFER TO DRAWING  
NO: 60578028\_DD\_SHT\_1102.1

**AECOM**

PROJECT  
**Fitzwilliam Cycle Route**

CLIENT  
Comhairle Cathrach  
Bhaile Átha Cliath  
Dublin City Council

NTA  
Údarás Náisiúnta Iompair  
National Transport Authority

Project Ireland 2040  
Building Ireland's Future

CONSULTANT  
AECOM  
Adelphi Plaza  
George's Street Upper  
Dun Laoghaire Co.Dublin  
Tel:+353(0)1 2383100 Fax:+353(0)1 2383199  
www.aecom.com

- NOTES:
- THIS DRAWING IS TO BE READ IN CONJUNCTION WITH ALL OTHER RELEVANT ARCHITECTURAL AND ENGINEERING DRAWINGS. ANY DISCREPANCIES, ERRORS OR OMISSIONS TO BE BROUGHT TO THE ATTENTION OF THE DESIGNER.
  - ALL DIMENSIONS TO BE CHECKED BY THE CONTRACTOR ON SITE PRIOR TO COMMENCEMENT OF WORKS.
  - DO NOT SCALE. ALL MEASUREMENTS AND COORDINATES TO BE CHECKED ON SITE.
  - CONTRACTOR TO REFER TO SPECIFICATION APPENDIX 11/1 FOR ADDITIONAL DETAILS.
  - CONTRACTOR TO UNDERTAKE WORKS TO KERBS, FLAGSTONES AND SETTS IN ACCORDANCE WITH THE "CONSTRUCTION STANDARDS FOR ROAD AND STREET WORKS IN DUBLIN CITY COUNCIL"

ISSUE/REVISION

I/R	DATE	DESCRIPTION
A	JUNE 2022	ISSUED FOR TENDER

KEY PLAN

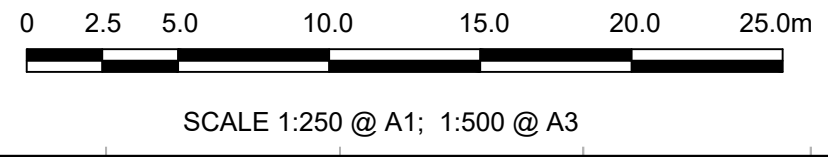
PROJECT NUMBER  
60578028

SHEET TITLE  
KERBS, FOOTWAYS AND PAVED AREAS  
SHEET 1 OF 6

SHEET NUMBER  
60578028\_DD\_SHT\_1100.1

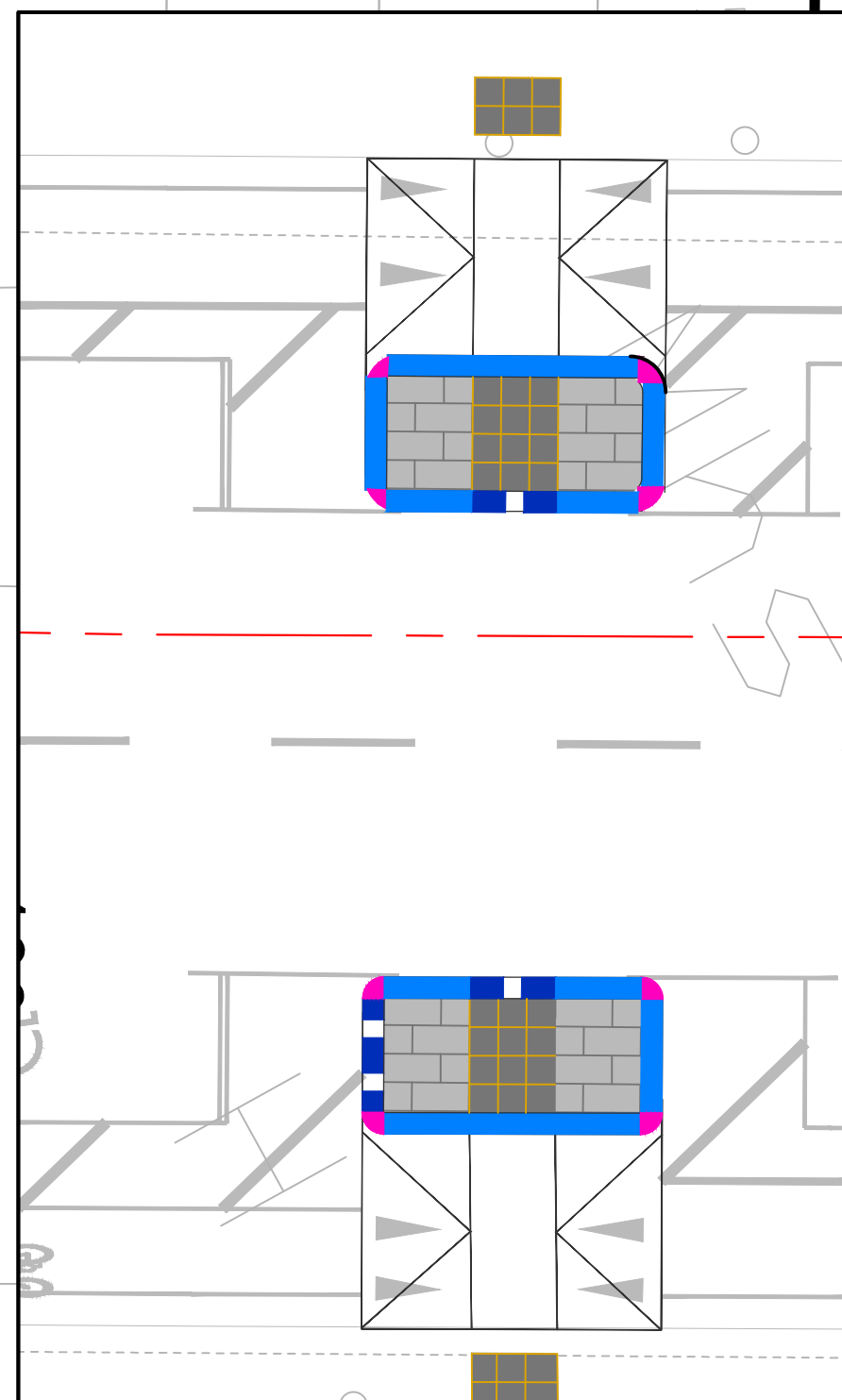
**A KERBS, FOOTWAYS AND PAVED AREAS**

1100.1 Scale: 1:250



**B INSET "A"**

1100.1 Scale: 1:100 @ A1; 1:200 @ A3



This drawing has been prepared for the use of AECOM's client. It may not be used, modified, reproduced or relied upon by third parties, except as agreed by AECOM or as required by law. AECOM accepts no responsibility, and denies any liability, whatsoever, to any party that uses or relies on this drawing without AECOM's express written consent. All measurements must be obtained from the stated dimensions.