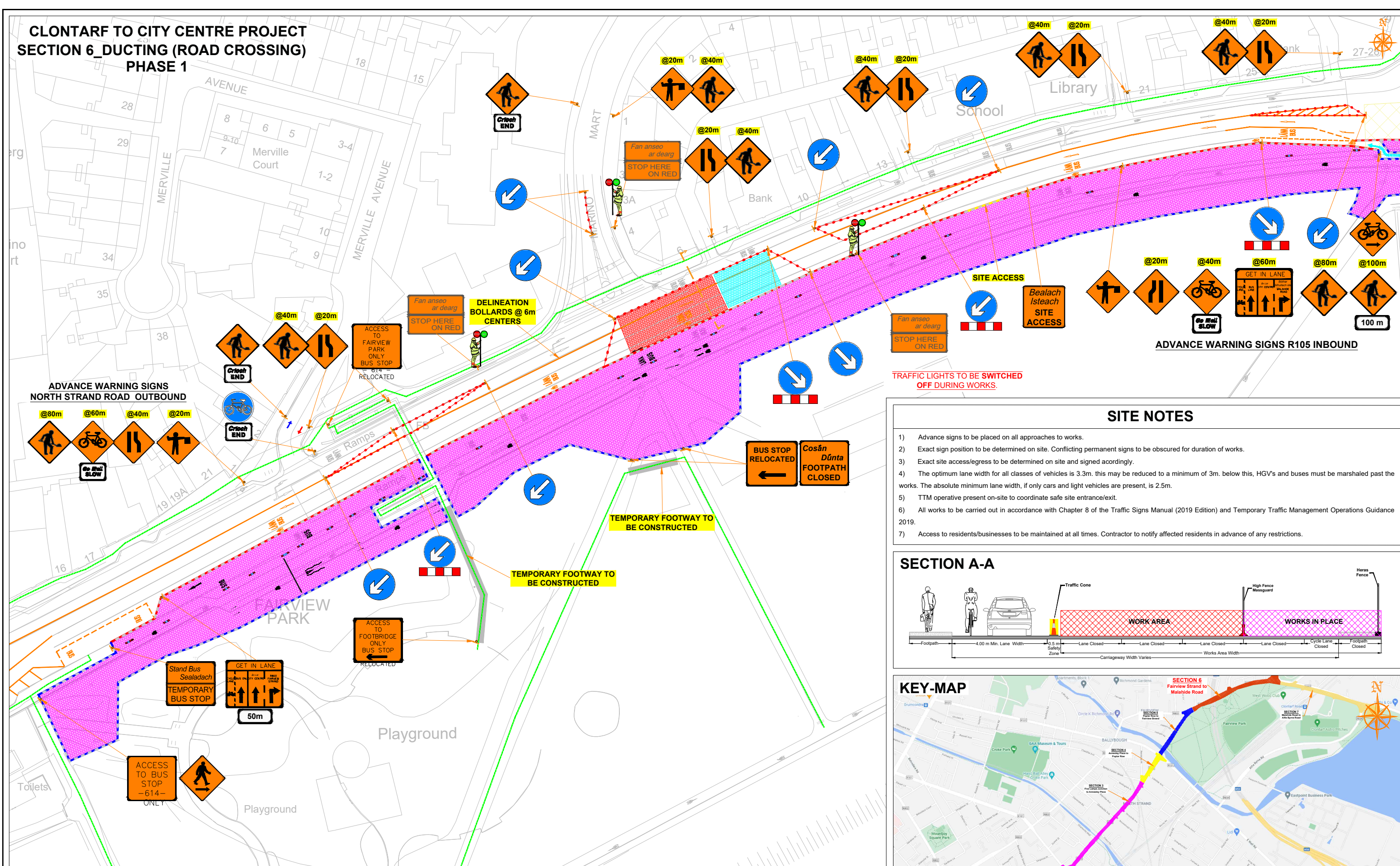


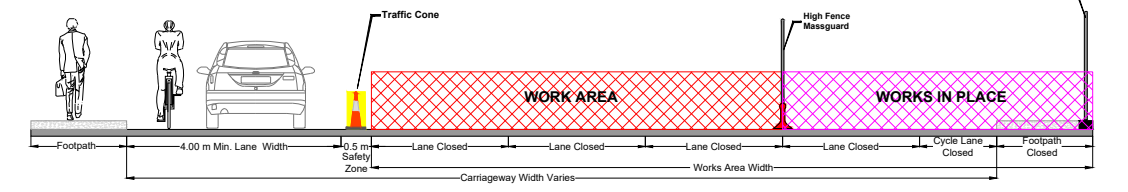
CLONTARF TO CITY CENTRE PROJECT
SECTION 6_DUCTING (ROAD CROSSING)
PHASE 1



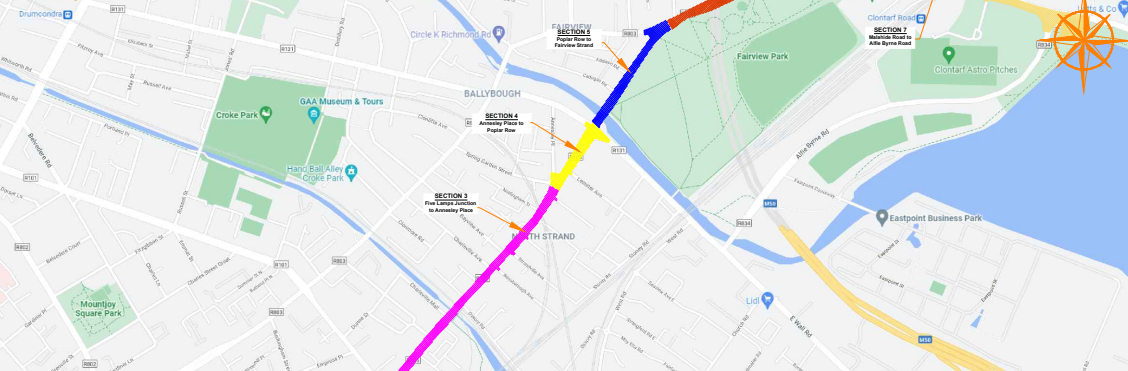
SITE NOTES

- 1) Advance signs to be placed on all approaches to works.
- 2) Exact sign position to be determined on site. Conflicting permanent signs to be obscured for duration of works.
- 3) Exact site access/egress to be determined on site and signed accordingly.
- 4) The optimum lane width for all classes of vehicles is 3.3m, this may be reduced to a minimum of 3m. below this, HGV's and buses must be marshaled past the works. The absolute minimum lane width, if only cars and light vehicles are present, is 2.5m.
- 5) TTM operative present on-site to coordinate safe site entrance/exit.
- 6) All works to be carried out in accordance with Chapter 8 of the Traffic Signs Manual (2019 Edition) and Temporary Traffic Management Operations Guidance 2019.
- 7) Access to residents/businesses to be maintained at all times. Contractor to notify affected residents in advance of any restrictions.

SECTION A-A



KEY-MAP



ROAD CONTROL

Copyright Notes:
This drawing is the property of Road Control Services Ltd. The design information contained herein is strictly confidential. This document is not to be used, reproduced, disclosed or circulated in whole or in part without prior written consent.

CLIENT

CLONMEL ENTERPRISES
BUILDING & CIVIL ENGINEERING

DESIGN PARAMETERS			
Speed Limit	60	Sign size (diamond)	600mm
Road Classification	1(iv)	Sign size (circular)	600mm
Roadworks type	B	Minimum Cone size	750mm
Number of advance signs	2	Cone spacing at tapers	3m
Sign visibility	40m	Cone spacing longitudinal	6m
Distance between signs	20m	Lateral Safety Zone	0.5m
Taper at lane	1 in 10 / 45°	Longitudinal Safety Zone	15m
Taper at hard shoulder	N/A	Minimum lane width	3.0m

LEGEND	
	Work Area
	Works in Place
	Safety Zone
	Traffic sign
	Traffic cones
	Pedestrian Route
	Heras Fencing
	Traffic Flow
	Massguard Barrier
	Temp. Line Markings

GENERAL NOTES

1) All information contained in this drawing (including digital data) should be checked and verified prior to any stage of construction;
2) All works are to be carried out in accordance with local authority requirements and are to be included in the site-specific safety & health plan;
3) Site inspections and maintenance of the traffic management layout is to be agreed with local authority to ensure the safety and integrity of the design;
4) Contractor to carry out a site risk assessment prior to the installation of any traffic management plan to ensure that conditions reflect those considered for design post submission;
5) Contractor shall be responsible for the provision of ramp access at any change in road surface level where traffic runs on a temporary surface, and for pedestrian/cycle ramps where footpath/cycle-ways have a level discontinuity as per result of the works.

Rev	Date	Details	Drm	Chk	App	Drm	BC
						Chk	DS
						App	DH
						Date	03/06/2022
						Scale	A1 NTS A3 NTS
						Stage	CONSTRUCTION

Project

CLONTARF TO CITY CENTRE PROJECT

Title

**TRAFFIC MANAGEMENT PLAN
SECTION 6_DUCTING
(ROAD CROSSING) - PHASE 1**

Drawing No

C21020_00_033

Rev

0