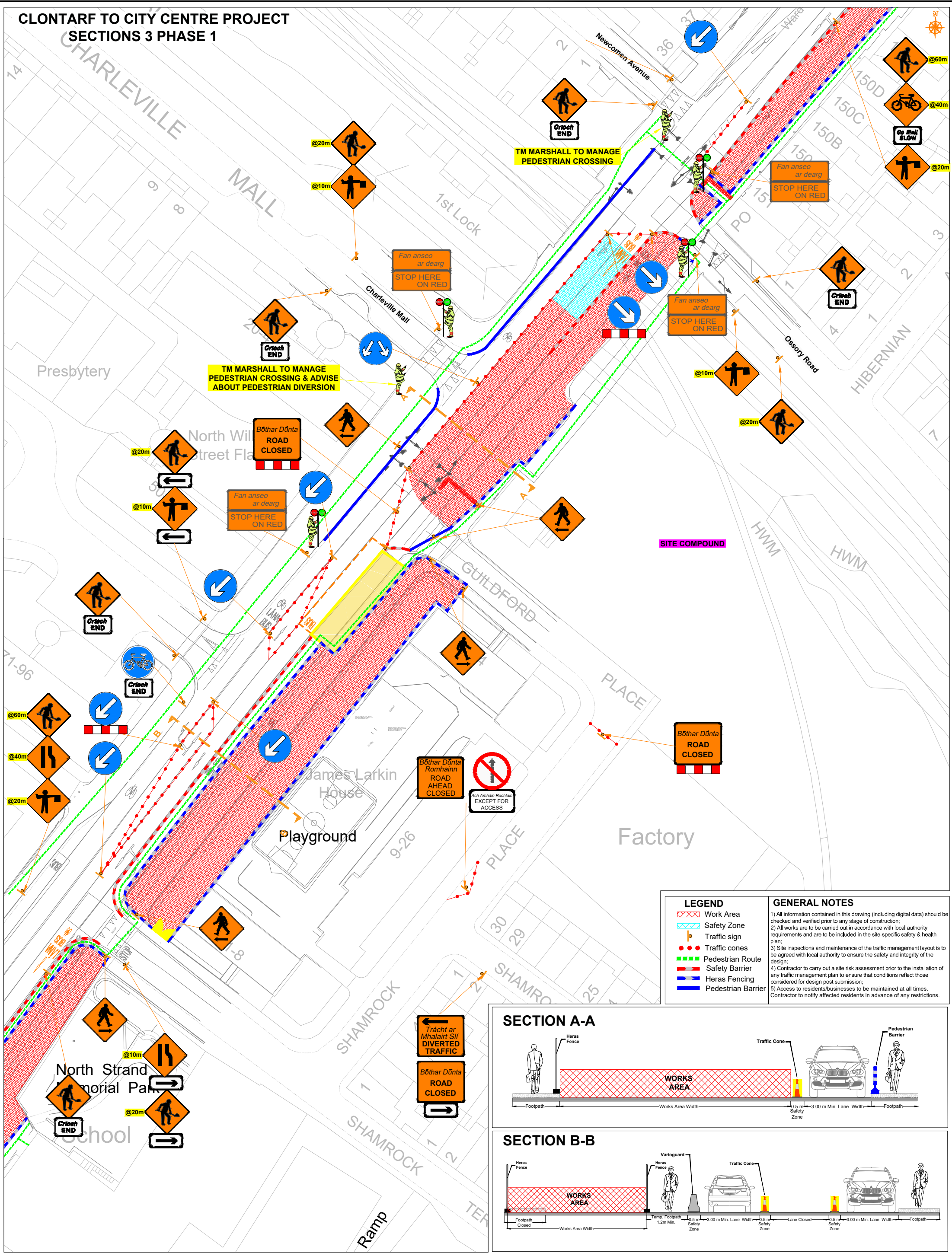
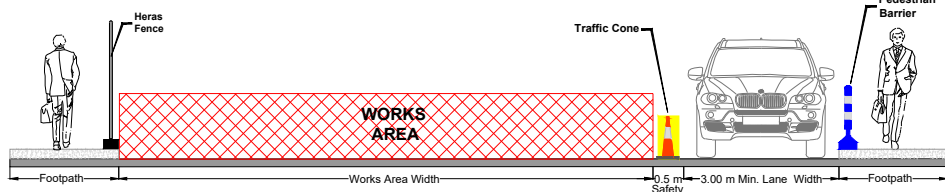


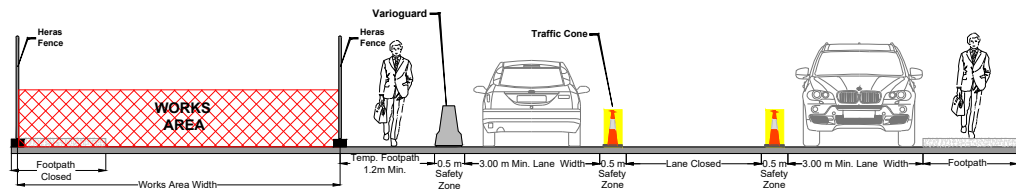
CLONTARF TO CITY CENTRE PROJECT
SECTIONS 3 PHASE 1



SECTION A-A



SECTION B-B



Copyright Notes:
This drawing is the property of Road Control Services Ltd. The design information contained herein is strictly confidential. This document is not to be used, reproduced, disclosed or circulated in whole or in part without prior written consent.

CLIENT



DESIGN PARAMETERS

Speed Limit	60	Sign size (diamond)	600mm
Road Classification	1(IV)	Sign size (circular)	600mm
Roadworks type	A	Minimum Cone size	750mm
Number of advance signs	3	Cone spacing at tapers	3m
Sign visibility	60m	Cone spacing longitudinal	6m
Distance between signs	20m	Lateral Safety Zone	0.5m
Taper at lane	1 in 10	Longitudinal Safety Zone	15m
Taper at hard shoulder	N/A	Minimum lane width	3.0m

Rev	Date	Details	Drm	Chk	App	Drm	BC
01	02.11.22	STOP & GO AMENDMENTS	DS	SD	DH	Chk	DS
						App	DH
						Date	18/10/2022
						Scale	A1 NTS A3 NTS
						Stage	CONSTRUCTION

Project
CLONTARF TO CITY CENTRE PROJECT

Title
**TRAFFIC MANAGEMENT PLAN
SECTION 3 ROAD CROSSING
CHARLEVILLE MALL_STAGE 1**

Drawing No C22001_00_063A Rev 1