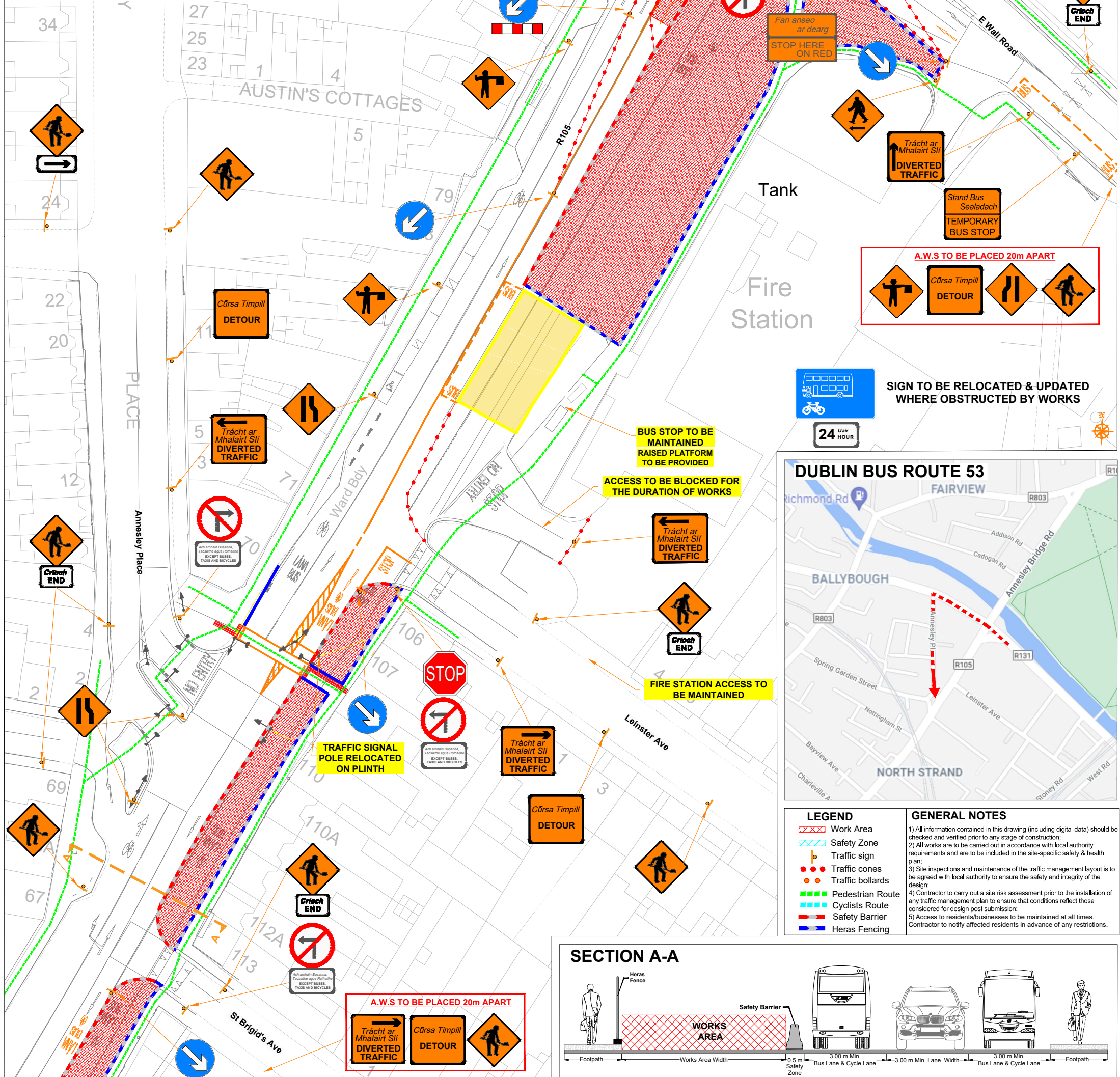




**CLONTARF TO CITY CENTRE PROJECT
SECTION 4 - REMEDIAL WORKS**



 <div>ROAD CONTROL</div> <div><small>Copyright Notes:</small> This drawing is the property of Road Control Services Ltd. The design information contained herein is strictly confidential. This document is not to be used, reproduced, disclosed or circulated in whole or in part without prior written consent.</div>	 <div>CLONMEL ENTERPRISES <small>BUILDING & CIVIL ENGINEERING</small></div>	DESIGN PARAMETERS		Rev	Date	Details	Drm	Chk	App	Drm	DS	Project CLONTARF TO CITY CENTRE PROJECT			
		Speed Limit	60	Sign size (diamond)	600mm								Chk	MA	
		Road Classification	1(iv)	Sign size (circular)	600mm								App	DH	
		Roadworks type	A	Minimum Cone size	750mm								Date	07/11/2022	
		Number of advance signs	3	Cone spacing at tapers	3m								Scale	A1 NTS A3 NTS	
Sign visibility	60m	Cone spacing longitudinal	6m									Title TRAFFIC MANAGEMENT PLAN SECTION 4 - REMEDIAL WORKS			
Distance between signs	20m	Lateral Safety Zone	0.5m							Stage	CONSTRUCTION				
Taper at lane	1 in 10	Longitudinal Safety Zone	15m									Drawing No	C21020 00 066	Rev	0
Taper at hard shoulder	N/A	Minimum lane width	3.0m												