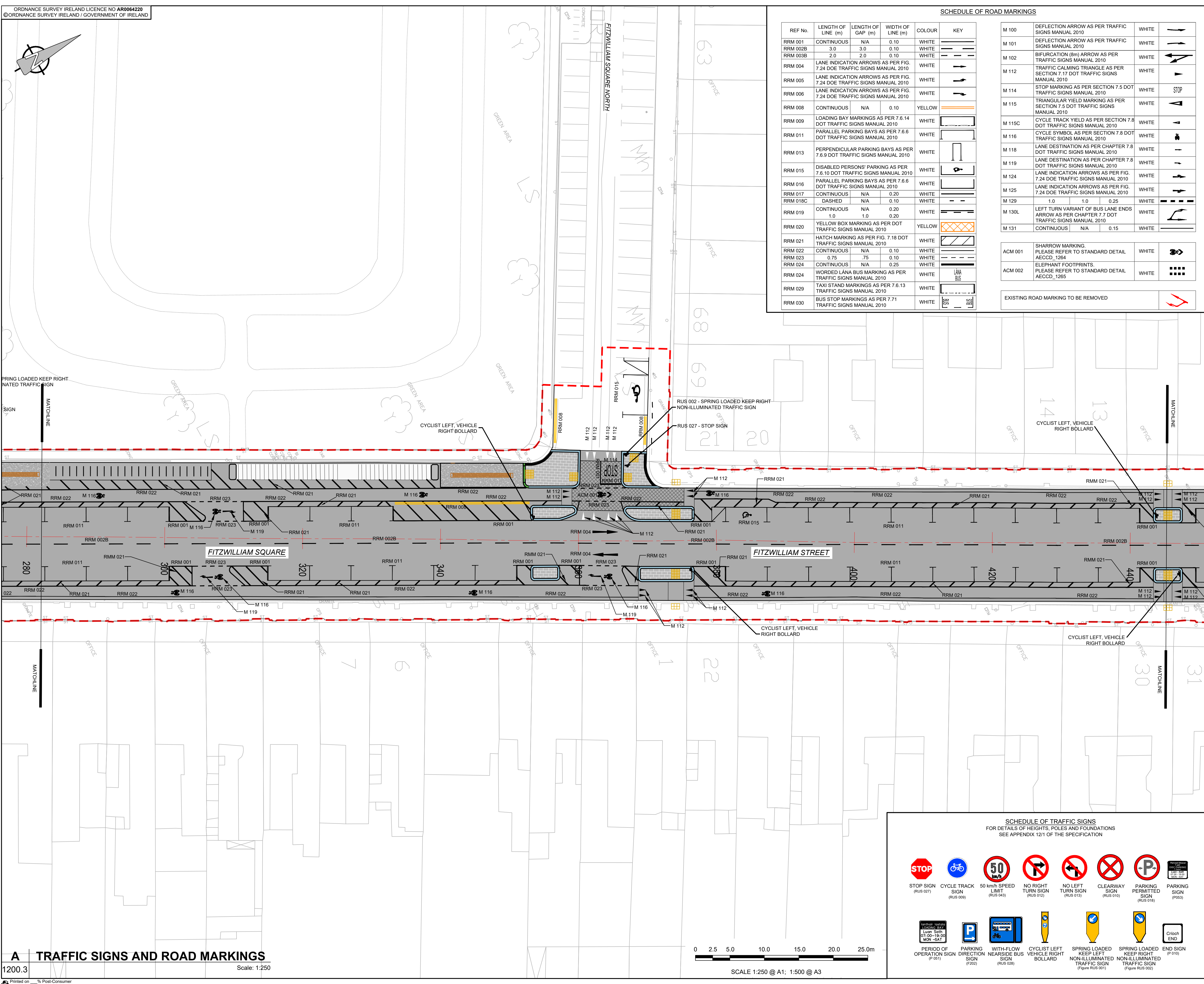


Last saved by: MEHANT/2022-09-07 Last Plot: 2022-09-08
 File name: I:\EU\AECOM\NET\COMEMIA\UK\IED\DL2\UBSPR-238627_FITZWILLIAM_CYCLE_ROUTE_DCC900_CAD_GS910_CAD20-SHEETSDetailed Design\60578028_DD_1200_A.DWG
 Project Management Initials: Designer: TM Checked: AM Approved: BMCm ISO A1 594mm x 841mm
 © ORDNANCE SURVEY IRELAND / GOVERNMENT OF IRELAND
 © ORDNANCE SURVEY IRELAND LICENCE NO AR0064220
 This drawing has been prepared for the use of AECOM's client. It may not be used, modified, reproduced or relied upon by third parties, except as agreed by AECOM or as required by law. AECOM accepts no responsibility, and denies any liability, whatsoever, to any party that uses or relies on this drawing without AECOM's express written consent. All measurements must be obtained from the stated dimensions.



SCHEDULE OF ROAD MARKINGS

REF No.	LENGTH OF LINE (m)	LENGTH OF GAP (m)	WIDTH OF LINE (m)	COLOUR	KEY
RRM 001	CONTINUOUS	N/A	0.10	WHITE	
RRM 002B	3.0	3.0	0.10	WHITE	
RRM 003B	2.0	2.0	0.10	WHITE	
RRM 004	LANE INDICATION ARROWS AS PER FIG. 7.24 DOE TRAFFIC SIGNS MANUAL 2010				WHITE
RRM 005	LANE INDICATION ARROWS AS PER FIG. 7.24 DOE TRAFFIC SIGNS MANUAL 2010				WHITE
RRM 006	LANE INDICATION ARROWS AS PER FIG. 7.24 DOE TRAFFIC SIGNS MANUAL 2010				WHITE
RRM 008	CONTINUOUS	N/A	0.10	YELLOW	
RRM 009	LOADING BAY MARKINGS AS PER 7.6.14 DOT TRAFFIC SIGNS MANUAL 2010				WHITE
RRM 011	PARALLEL PARKING BAYS AS PER 7.6.6 DOT TRAFFIC SIGNS MANUAL 2010				WHITE
RRM 013	PERPENDICULAR PARKING BAYS AS PER 7.6.9 DOT TRAFFIC SIGNS MANUAL 2010				WHITE
RRM 015	DISABLED PERSONS' PARKING AS PER 7.5.10 DOT TRAFFIC SIGNS MANUAL 2010				WHITE
RRM 016	PARALLEL PARKING BAYS AS PER 7.6.6 DOT TRAFFIC SIGNS MANUAL 2010				WHITE
RRM 018C	DASHED	N/A	0.10	WHITE	
RRM 019	CONTINUOUS	N/A	0.20	WHITE	
RRM 020	YELLOW BOX MARKINGS AS PER DOT TRAFFIC SIGNS MANUAL 2010				YELLOW
RRM 021	HATCH MARKING AS PER FIG. 7.18 DOT TRAFFIC SIGNS MANUAL 2010				WHITE
RRM 022	CONTINUOUS	N/A	0.10	WHITE	
RRM 023	0.75	0.75	0.10	WHITE	
RRM 024	CONTINUOUS	N/A	0.25	WHITE	
RRM 024	WORDED LANA BUS MARKING AS PER TRAFFIC SIGNS MANUAL 2010				WHITE
RRM 029	TAXI STAND MARKINGS AS PER 7.6.13 TRAFFIC SIGNS MANUAL 2010				WHITE
RRM 030	BUS STOP MARKINGS AS PER 7.71 TRAFFIC SIGNS MANUAL 2010				WHITE

REF No.	DEFLECTION ARROW AS PER TRAFFIC SIGNS MANUAL 2010	COLOUR	KEY	
M 100	DEFLECTION ARROW AS PER TRAFFIC SIGNS MANUAL 2010	WHITE		
M 101	DEFLECTION ARROW AS PER TRAFFIC SIGNS MANUAL 2010	WHITE		
M 102	BIFURCATION (6m) ARROW AS PER TRAFFIC SIGNS MANUAL 2010	WHITE		
M 112	TRAFFIC CALMING TRIANGLE AS PER SECTION 7.17 DOT TRAFFIC SIGNS MANUAL 2010	WHITE		
M 114	STOP MARKING AS PER SECTION 7.5 DOT TRAFFIC SIGNS MANUAL 2010	WHITE		
M 115	TRIANGULAR YIELD MARKING AS PER SECTION 7.5 DOT TRAFFIC SIGNS MANUAL 2010	WHITE		
M 115C	CYCLE TRACK YIELD AS PER SECTION 7.8 DOT TRAFFIC SIGNS MANUAL 2010	WHITE		
M 116	CYCLE SYMBOL AS PER SECTION 7.8 DOT TRAFFIC SIGNS MANUAL 2010	WHITE		
M 118	LANE DESTINATION AS PER CHAPTER 7.8 DOT TRAFFIC SIGNS MANUAL 2010	WHITE		
M 119	LANE DESTINATION AS PER CHAPTER 7.8 DOT TRAFFIC SIGNS MANUAL 2010	WHITE		
M 124	LANE INDICATION ARROWS AS PER FIG. 7.24 DOE TRAFFIC SIGNS MANUAL 2010	WHITE		
M 125	LANE INDICATION ARROWS AS PER FIG. 7.24 DOE TRAFFIC SIGNS MANUAL 2010	WHITE		
M 129	1.0 1.0 0.25	WHITE		
M 130L	LEFT TURN VARIANT OF BUS LANE ENDS ARROW AS PER CHAPTER 7.7 DOT TRAFFIC SIGNS MANUAL 2010	WHITE		
M 131	CONTINUOUS	N/A	0.15	WHITE

REF No.	MARKING	COLOUR	KEY
ACM 001	SHARROW MARKING. PLEASE REFER TO STANDARD DETAIL AECCD_1264	WHITE	
ACM 002	ELEPHANT FOOTPRINTS. PLEASE REFER TO STANDARD DETAIL AECCD_1265	WHITE	

EXISTING ROAD MARKING TO BE REMOVED

AECOM

PROJECT
Fitzwilliam Cycle Route

CLIENT

Project Ireland 2040
Building Ireland's Future

CONSULTANT

AECOM
Adelphi Plaza
George's Street Upper
Dun Laoghaire Co. Dublin
Tel: +353(0)1 2383100 Fax: +353(0)1 2383199
www.aecom.com

- NOTES:**
- LEVELS ARE IN METRES & ARE RELATED TO ORDNANCE DATUM.
 - SETTING OUT DETAILS TO BE AGREED WITH EMPLOYER'S REPRESENTATIVE.
 - ALL ROAD MARKINGS & SIGNAGE TO BE IN ACCORDANCE WITH TRAFFIC SIGNS MANUAL.
 - ALL SIGNS TO BE INSTALLED ON A CRANKED POLE TO THE BACK OF FOOTPATH UNLESS OTHERWISE AGREED WITH ENGINEERS REPRESENTATIVE.
 - TRAFFIC SIGNS TO BE INSTALLED IN SUCH A WAY AS TO ENSURE A LATERAL CLEARANCE OF 0.45m DISTANCE FROM THE OUTSIDE EDGE OF THE SIGN FACE TO THE ROADSIDE KERB.
 - ALL TRAFFIC SIGNS TO BE MOUNTED ON POLES TO ENSURE A MINIMUM HEAD CLEARANCE OF 2.5m UNLESS SPECIFIED OTHERWISE.
 - REFER TO SPECIFICATION APPENDICES 12/1 AND 12/3.

ISSUE/REVISION

NO.	DATE	DESCRIPTION
A	JUNE 2022	ISSUED FOR TENDER
I/R	DATE	DESCRIPTION

KEY PLAN

PROJECT NUMBER
60578028

SHEET TITLE
TRAFFIC SIGNS AND ROAD MARKINGS SHEET 3 OF 6

SHEET NUMBER
60578028_DD_SHT-1200.3

SCHEDULE OF TRAFFIC SIGNS

FOR DETAILS OF HEIGHTS, POLES AND FOUNDATIONS SEE APPENDIX 12/1 OF THE SPECIFICATION

STOP SIGN (RUS 027)

CYCLE TRACK SIGN (RUS 009)

50 km/h SPEED LIMIT SIGN (RUS 043)

NO RIGHT TURN SIGN (RUS 012)

NO LEFT TURN SIGN (RUS 013)

CLEARWAY SIGN (RUS 010)

PARKING PERMITTED SIGN (RUS 018)

PARKING SIGN (P053)

PERIOD OF OPERATION SIGN (P 051)

PARKING DIRECTION SIGN (P 052)

WITH-FLOW NEAR-SIDE BUS SIGN (RUS 008)

CYCLIST LEFT VEHICLE RIGHT BOLLARD

SPRING LOADED KEEP LEFT NON-ILLUMINATED TRAFFIC SIGN (Figure RUS 001)

SPRING LOADED KEEP RIGHT NON-ILLUMINATED TRAFFIC SIGN (Figure RUS 002)

END SIGN (P 010)

