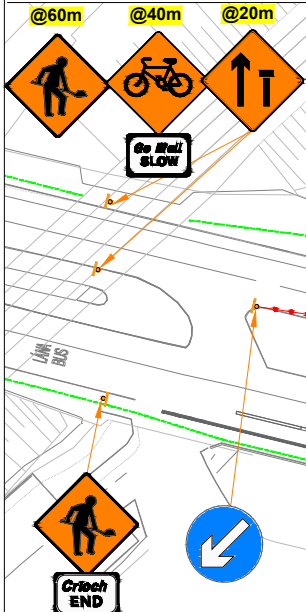
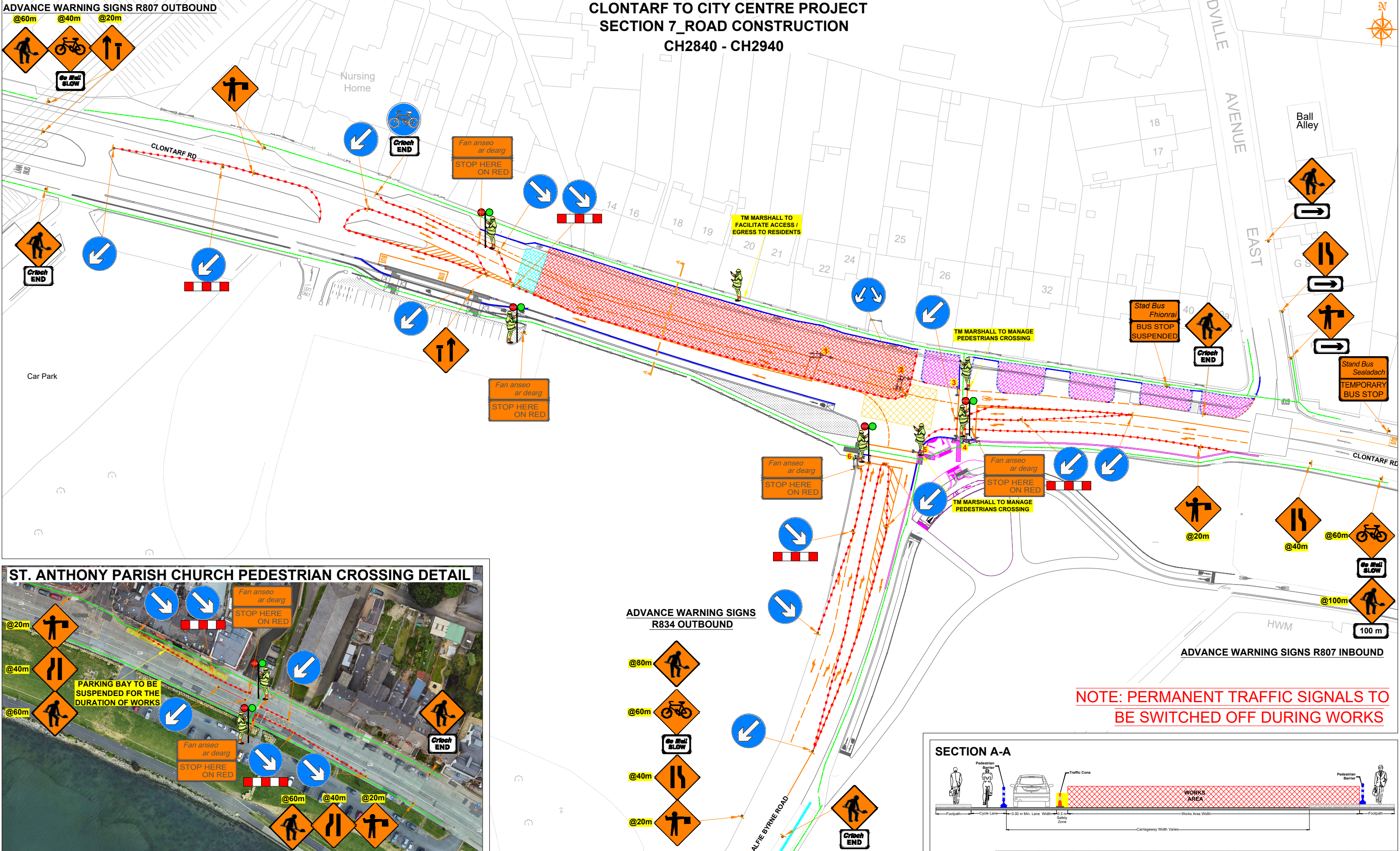


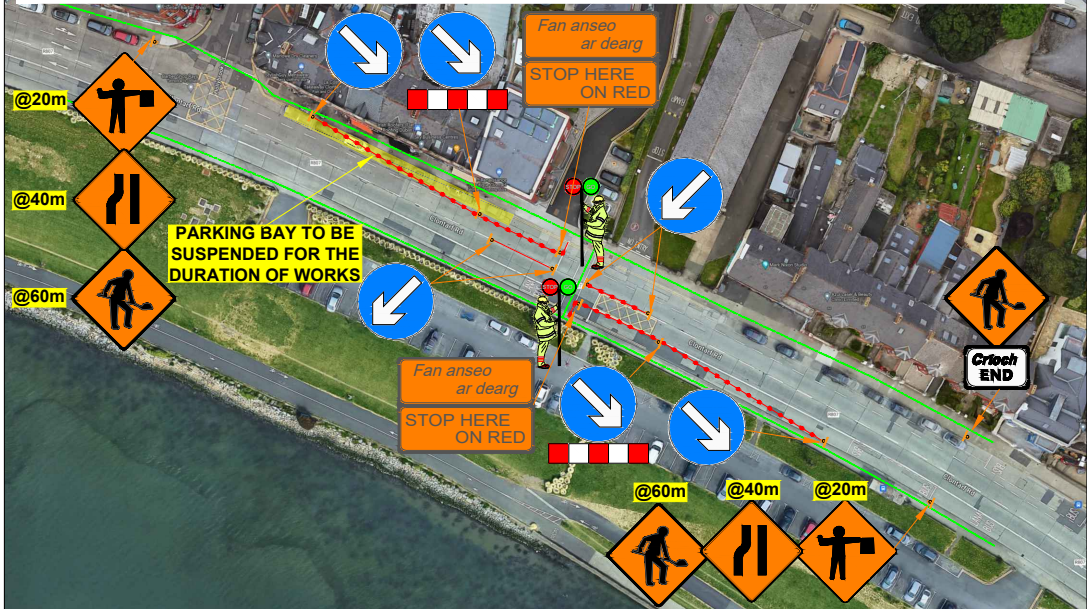
ADVANCE WARNING SIGNS R807 OUTBOUND



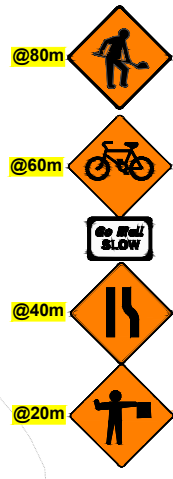
CLONTARF TO CITY CENTRE PROJECT
SECTION 7_ ROAD CONSTRUCTION
CH2840 - CH2940



ST. ANTHONY PARISH CHURCH PEDESTRIAN CROSSING DETAIL



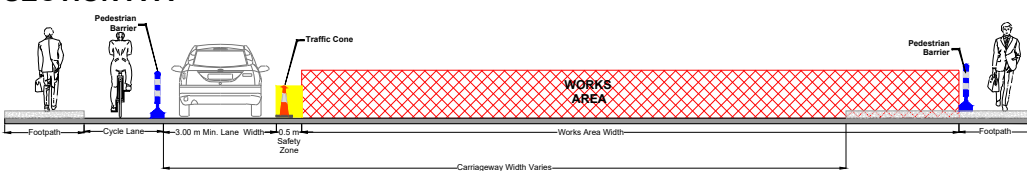
ADVANCE WARNING SIGNS
R834 OUTBOUND



ADVANCE WARNING SIGNS R807 INBOUND

NOTE: PERMANENT TRAFFIC SIGNALS TO
BE SWITCHED OFF DURING WORKS

SECTION A-A



Copyright Notes:
This drawing is the property of Road Control Services Ltd. The design information contained herein is strictly confidential. This document is not to be used, reproduced, disclosed or circulated in whole or in part without prior written consent.

CLIENT



DESIGN PARAMETERS

Speed Limit	60	Sign size (diamond)	600mm
Road Classification	1(iv)	Sign size (circular)	600mm
Roadworks type	A / B	Minimum Cone size	750mm
Number of advance signs	3	Cone spacing at tapers	3m
Sign visibility	60m	Cone spacing longitudinal	6m
Distance between signs	20m	Lateral Safety Zone	0.5m
Taper at lane	1 in 10/45°	Longitudinal Safety Zone	15m
Taper at hard shoulder	N/A	Minimum lane width	3.0m

LEGEND

Work Area
Safety Zone
Traffic sign
Traffic cones
Pedestrian Route
Varioguard
Heras Fencing
Pedestrians Barrier
Temp. Line Markings

GENERAL NOTES

- 1) All information contained in this drawing (including digital data) should be checked and verified prior to any stage of construction;
- 2) All works are to be carried out in accordance with local authority requirements and are to be included in the site-specific safety & health plan;
- 3) Site inspections and maintenance of the traffic management layout is to be agreed with local authority to ensure the safety and integrity of the design;
- 4) Contractor to carry out a site risk assessment prior to the installation of any traffic management plan to ensure that conditions reflect those considered for design post submission;
- 5) Contractor shall be responsible for the provision of ramp access at any change in road surface level where traffic runs on a temporary surface, and for pedestrian/cycle ramps where footpath/cycle-ways have a level discontinuity as per result of the works.

Rev	Date	Details	Dm	Chk	App	Dm	DJ
01	11.05.23	TM SET UP AMENDMENT	DS	SD	DH	Chk	MA
						App	DH
						Date	04/05/2023
						Scale	A1 NTS A3 NTS
						Stage	CONSTRUCTION

Project	Title	Drawing No	Rev
CLONTARF TO CITY CENTRE PROJECT	TRAFFIC MANAGEMENT PLAN SECTION 7_ ROAD CONSTRUCTION CH2840 - CH2940	C22001_00_131	1