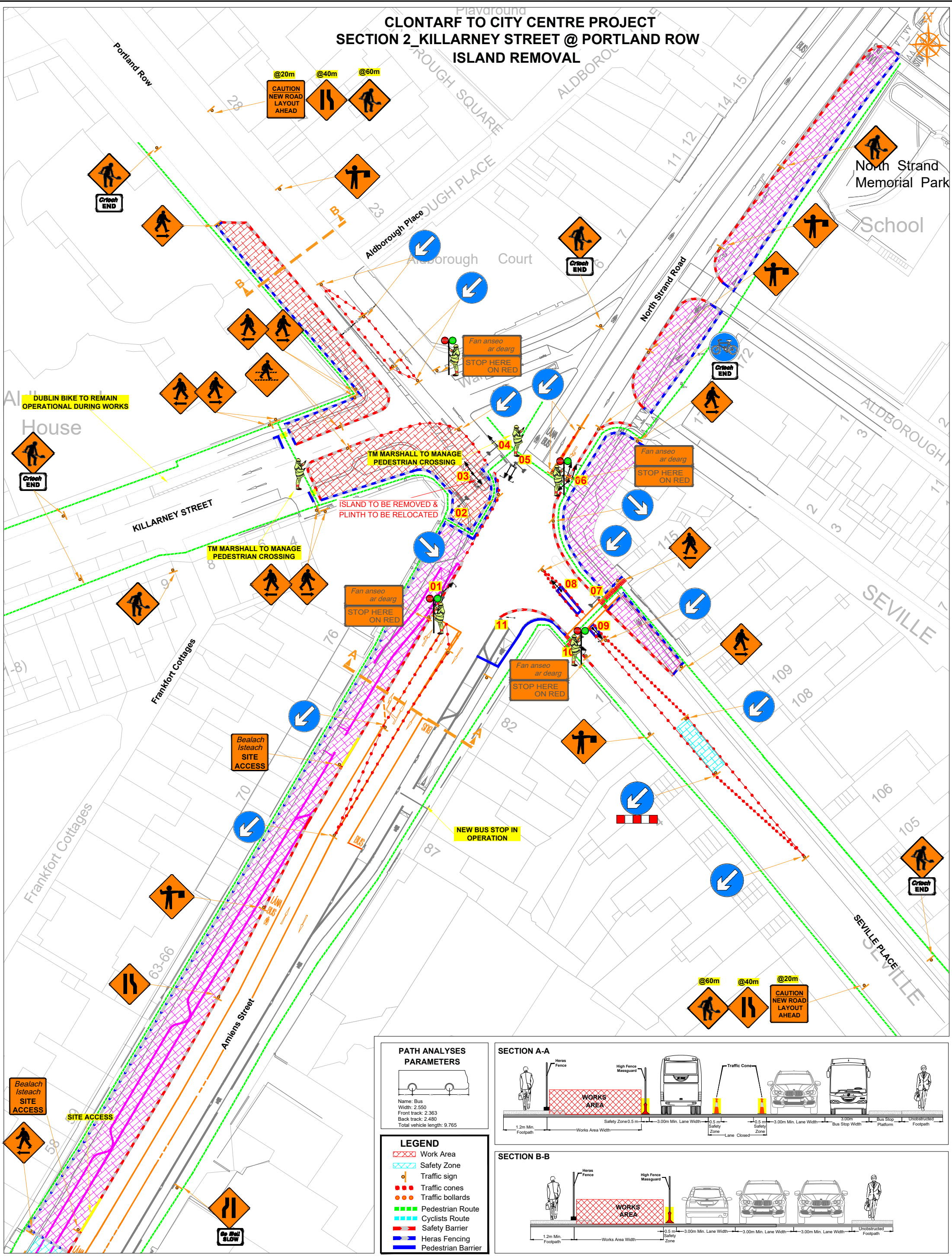


CLONTARF TO CITY CENTRE PROJECT
SECTION 2_KILLARNEY STREET @ PORTLAND ROW
ISLAND REMOVAL



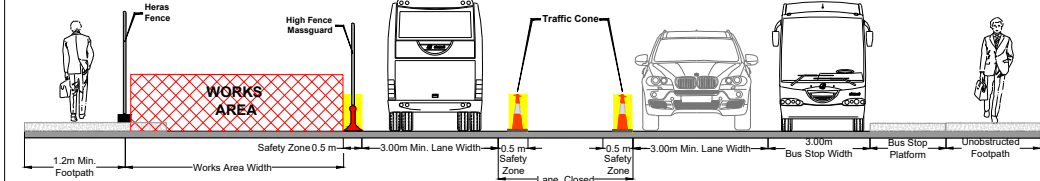
PATH ANALYSES
PARAMETERS

Name: Bus
Width: 2.550
Front track: 2.363
Back track: 2.480
Total vehicle length: 9.765

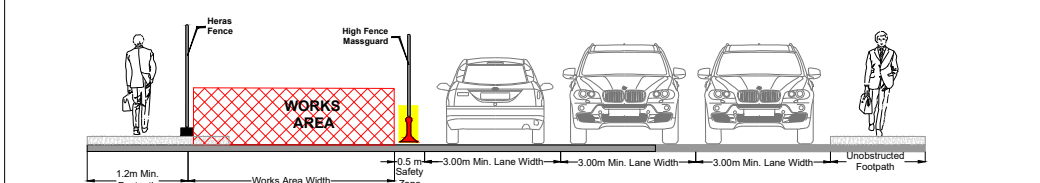
LEGEND

- Work Area
- Safety Zone
- Traffic sign
- Traffic cones
- Traffic bollards
- Pedestrian Route
- Cyclists Route
- Safety Barrier
- Heras Fencing
- Pedestrian Barrier

SECTION A-A



SECTION B-B



Copyright Notes:
This drawing is the property of Road Control Services Ltd. The design information contained herein is strictly confidential. This document is not to be used, reproduced, disclosed or circulated in whole or in part without prior written consent.

CLIENT



DESIGN PARAMETERS

Speed Limit	60	Sign size (diamond)	600mm
Road Classification	1(IV)	Sign size (circular)	600mm
Roadworks type	A	Minimum Cone size	750mm
Number of advance signs	3	Cone spacing at tapers	3m
Sign visibility	60m	Cone spacing longitudinal	6m
Distance between signs	20m	Lateral Safety Zone	0.5m
Taper at lane	1 in 10	Longitudinal Safety Zone	15m
Taper at hard shoulder	N/A	Minimum lane width	3.0m

Rev	Date	Details	Drm	Chk	App	Drm	DS
						Chk	MA
						App	DH
						Date	22/05/2023
						Scale	A1 NTS A3 NTS
						Stage	CONSTRUCTION

Project	CLONTARF TO CITY CENTRE PROJECT
Title	TRAFFIC MANAGEMENT PLAN SECTION 2_KILLARNEY ST PORTLAND ROW - DRAINAGE WORKS
Drawing No	C22001_00_136
Rev	0