

6 Herculanean House

Referred to as a summerhouse for the Guinness family, The Herculanean Temple was designed to mimic the architecture of ancient Roman temples, transporting visitors back in time, the temple had a barrel roof and stained glass windows. The square tiles on its floor were hand-painted to create the impression of smaller mosaic tiles and feature interesting Grecian motifs. The hand-painted tiles are now on display in the Wintergarden at the Red Stables. Feel free to climb up the bank and explore the Herculaneum from here or approach it later from the Mound.

7 Hermit's Cave

The 'Bridge & Hermitage' spans the Nanekin River and houses the magical Hermit's Cave. With its ancient stone entrance, visiting the Hermit's Cave feels like stepping into a storybook where imagination come to life.

8 The Pompeiian Temple & Pond

The Pompeiian Water Temple on the banks of the boating lake is inspired by the temples of the ancient city of Pompeii which was buried by a volcanic eruption in 79 AD. It was used as a teahouse by the Guinness family and is believed to have been built from parts salvaged from other buildings.

9 St Anne's Wishing Well

St. Anne's Well is a medieval well which gives the park its name. It was once a popular holy well and place of pilgrimage. Visitors to the well would throw coins and make a wish but it has been dry since the 1950s. While clearing the ground by the well, an ancient limestone path was discovered. Legend has it that the well was made to flow by the action of a saint.

10 Rustic Arches

The Rustic Arches are three unique structures made entirely from natural stone and materials. The Arches are on a direct route to and from St Anne's House. They are designed to resemble whimsical tunnels or archways and are a great place for playing hide and seek!

11 Annie Lee Tower Bridge

The first folly to be built was Annie Lee Bridge, which celebrated the birth of Benjamin Lee Guinness's daughter in 1837. It is modelled on the Tomb of the Julii at Glanum near St. Rémy in France.

12 Playground

This is the last destination of your journey! Enjoy the fantastic slides, swings, Zipline and climbing frame for older kids. There are also birds and ducks in the lakes nearby who might be interested in joining you for lunch!

About this Map

This story trail has been created just for you!

Transition year students along with the fantastic charity Fighting Words and some local people who wanted to help out, have come together to make this trail happen. It takes you on a super fun adventure through the park and is completely open to everyone. So, keep your explorer hat on and let's start our adventure!

We kick off at the **Red Stables**, with its redbrick courtyard. A fascinating and historic site dating back to the 19th century where the stables were originally built as part of the estate belonging to the famous Guinness family.

Moving on through to the **Rose Garden** with its many different varieties of roses and where the flowers bloom in all the colours of the rainbow! Then, we make our way to the Walled Garden, a secret place full of exciting surprises!

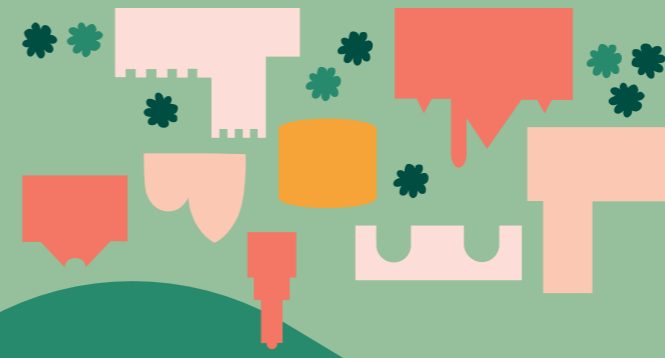
As we keep going we'll pass by some old stone building called Follies along the Naniken river. Did you know, some of these follies were built using a fake stone called Pulhamite! They are like secret hideouts full of history, keep your eyes out for them!

Soon we'll reach the amazing **Pompeiian Temple** and **St. Anne's Well** with its hood of stone before following the trail around the **Ornamental Pond** where ducks swim around happily. As we turn back we'll pass more stone follies on the **Chestnut Walk** with our adventure coming to a close at the playground with its slides, swings and zipline.

Ready to join in the fun? Come dive in to a world of magic and wonder as we explore this fantastic story trail together!

What do you think happens next?

Share your story and images with us on social media using **#stannesstorytrail**



St. Anne's Park Story Trail Map

A special thanks to:

Fighting Words charity facilitated the creation of this story trail with workshops designed to promote creativity and writing as a fun and powerful means of self-expression. Discovering and harnessing the potential of these young writers, inspiring them to unlock the power of their imaginations and creative writing skills.

Map Key

1 Red Stables

These were originally built to house horses and carriages belonging to the Guinness family, famous for their brewing business. Imagine the magnificent horses trotting through the stables, ready for an exciting carriage ride!

2 Rose Garden

The delightful Rose Garden has a rich history that dates back many years. It's been lovingly tended to by gardeners who have nurtured the roses and ensured that their beauty continues to enchant visitors. So, take a deep breath and enjoy the amazing scents that fill the air!

3 Walled Garden

A hidden treasure tucked away within St. Anne's Park. Our famous clock tower was built in 1850, its giant bell is inscribed with Benjamin Lee's name and family motto, 'Spes Mea in Deo' (My Hope is in God). This isn't just any garden, it's a world of discovery, growth and play!

4 Gothic Bridge

One of twelve follies located in the park, a folly being a decorative building within a garden. The Gothic Bridge gets its name from its unique architectural style which is often associated with spooky castles and haunted houses, adding a touch of mystery to the park.

5A Stepping Stones

These old stepping stones come in different shapes and sizes, ranging from circular, square and irregular shapes and traverse the Naniken River. Walking across stepping stones requires balance and concentration so carefully place your feet on each stone when crossing to make sure you get to the other side safely!

5B Druid's Circle

Druid's Circles were places where ancient Celtic people known as Druids, would come together for important ceremonies and celebrations. This one is a circle of yew trees and a rockwork feature which replaces a more ancient "Druidic Circle" of Giant's Causeway basalt which was lost at an earlier stage. Druid's Circles are like gateways to the past, connecting us to ancient traditions and the wonders of nature.



NANEKIN RIVER

ROMAN TOWER

THE AVENUE

THE MOUND

CHESTNUT AVE.

FAIRY TREE

- | | | |
|---------------------|---------------------------|--|
| 1 Red Stables | 7 Hermit's Cave | → Primary Route (Fully accessible) |
| 2 Rose Garden | 8 Pompeian Temple & Pond | → Secondary Route (Not fully accessible) |
| 3 Walled Garden | 9 St Anne's Wishing Well | |
| 4 Gothic Bridge | 10 Rustic Arches | |
| 5.A Stepping Stones | 11 Annie Lee Tower Bridge | |
| 5.B Druid's Circle | 12 Playground | |
| 6 Herculanean House | | |