
DCC Telecoms Unit

Duct Access Product Matrix

MARCH 2023

Dublin City Council – Telecoms Unit



Comhairle Cathrach
Bhaile Átha Cliath
Dublin City Council



Contents

- 1. Document Scope 3
- 2. Product Description 3
- 3. Pricing and Rate Card 3
- 4. Roles and Responsibilities..... 3
- 5. Processes and Procedures..... 4
- 6. Wayleaves and License Agreements..... 4
- 7. Supporting Information 5
- 8. Supporting Information Required to Access the Duct Network..... 5
- 9. Support Contacts..... 6
- 10. Product Matrix 7
- 11. Process Maps..... 8
- Appendix A – Rate Card 12

1. Document Scope

This document sets out all aspects of the DCC offering for duct access.

2. Product Description

The following variants of the duct access products are available:

Duct Access Model	Type
Full Duct	100mm; 150mm; 63mm
Sub Duct	50mm; 32/28mm
Micro Duct	14/10mm

The availability of the variants set out in the table above is dependent on the available capacity within the DCC network.

3. Pricing and Rate Card

The rate card, see Appendix A, applies to standard service offerings within the existing network. Case-by-case pricing will be required for nonstandard offerings which would include but not limited to, new network builds, areas of limited capacity and special engineering difficulty. DCC duct is available on an annual operating lease basis or on an IRU basis (typically 20–30-year term).

4. Roles and Responsibilities

The section sets out the roles and responsibilities of all parties involved in the provision and the use of the duct access offering.

The Telecoms Unit:

Provides a single point of contact for the processing of duct access requests. Novegen are the Telecoms Unit's appointed management agent.

Contact: support@dcctu.zendesk.com

The Customer:

To use the duct in accordance with the agreed wayleave, see Appendix B.

Management Companies (Apleona, Building Managers etc):

Facilitating access to the duct network in a timely manner where the duct is situated in an area under their management.

5. Processes and Procedures

The following processes and procedures have been defined to support duct access.

- Sales Quote Request
- Service Delivery
- Access Permit Request
- Annual Billing

6. Wayleaves and License Agreements

Wayleave Agreements:

An existing wayleave agreement, see Appendix B, is in place to support duct access product.

IRU Agreement:

An existing IRU agreement and IRU calculator is in place to support the duct access product.

7. Supporting Information

The following supporting information is available for duct access.

- Asset Maps
- Product Definition
- Rate Card
- Wayleaves Agreements
- IRU Calculator
- IRU Agreement
- Process maps

8. Supporting Information Required to Access the Duct Network

The following information will be required to access or work on the duct network.

- RAMs
- Health and Safety Statements
- High level designs
- Low level designs
- Evidence of Appropriate Insurance
- Appropriate Wayleaves

9. Support Contacts

All support requests should be addressed to the Telecoms Unit and/or their management agent Novegen.

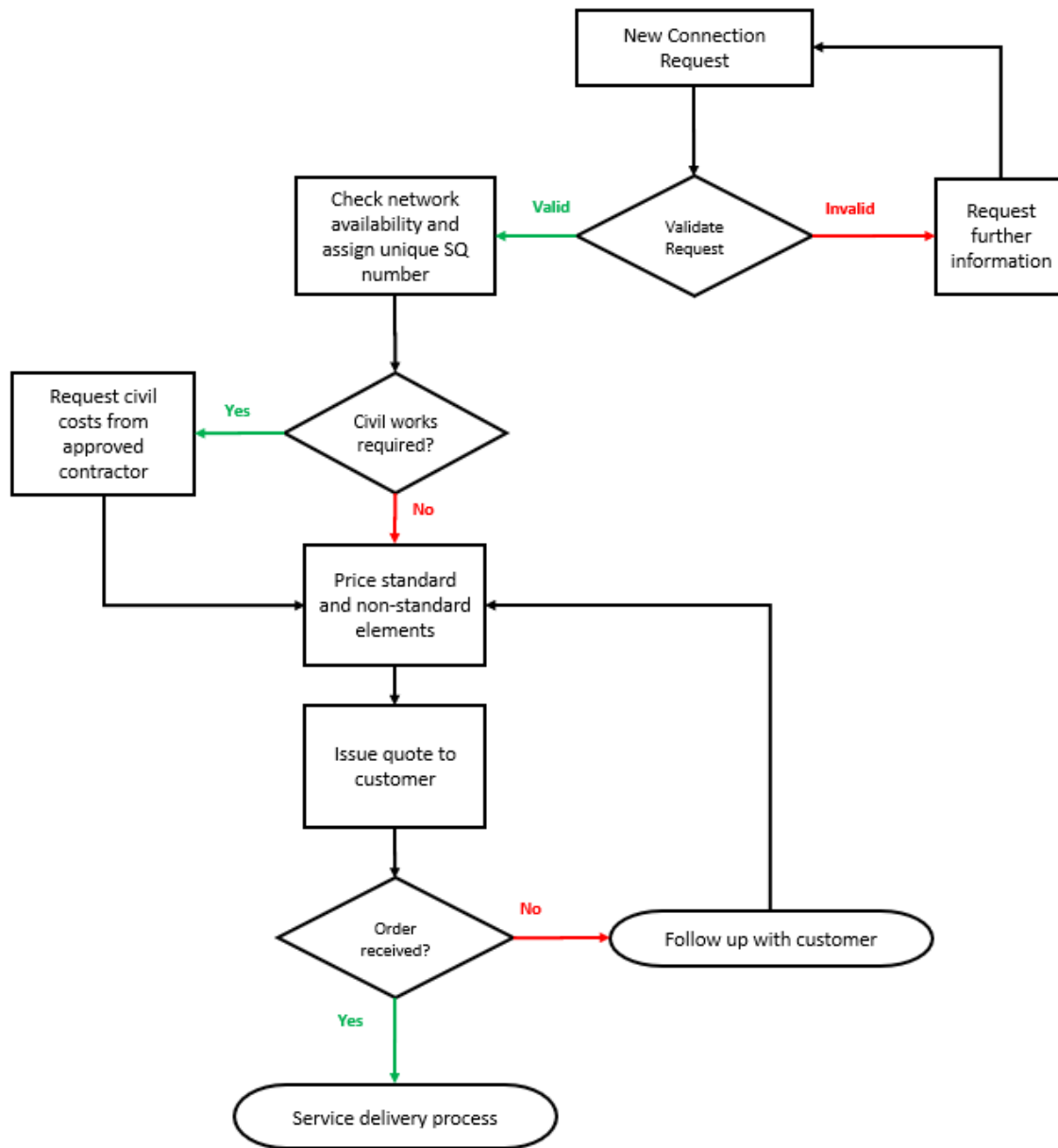
support@dcctu.zendesk.com

10. Product Matrix

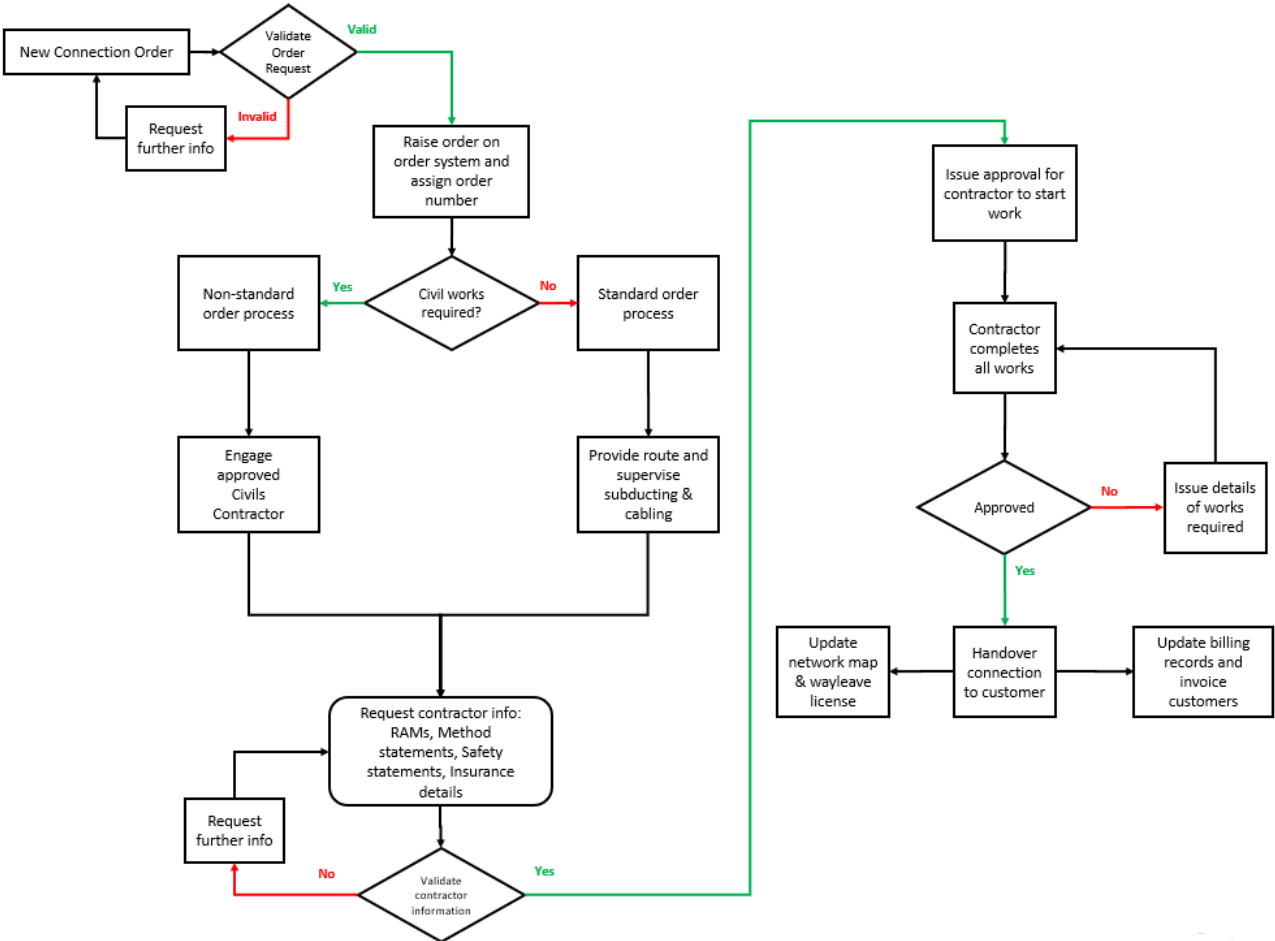
Product Offering Type	Full Duct	Sub Duct	Micro Duct
Available Sizes	100MM, 150MM, 63MM	50MM, 32MM	14/10 MM
Availability	Case by case basis. Depends On <ul style="list-style-type: none"> •Available capacity •Location •Term •Other local factors 	Standard Offering	Standard Offering
Network Options	<ul style="list-style-type: none"> •Existing DCC telecoms duct (where available) •Other DCC non telecom duct assets [Subject to agreements] •New ducts installed by DCC (subject to cost benefit analysis) 	<ul style="list-style-type: none"> •Existing DCC telecoms duct (where available) •Other DCC non telecom duct assets [Subject to agreements] •New ducts installed by DCC (subject to cost benefit analysis) 	<ul style="list-style-type: none"> •Existing DCC telecoms duct (where available) •Other DCC non telecom duct assets [Subject to agreements]
Lease Options	IRU	Annual and IRU	Annual and IRU
Pricing	Case by case basis	Agreed Rate Card	Agreed Rate Card
Roles and Responsibilities Defined	Yes	Yes	Yes
Key Stakeholders Identified	Yes	Yes	Yes
Defined Processes and Procedures	<ul style="list-style-type: none"> •Sales and quotation process •Service delivery process •Maintenance and support process •Permit to work and access control process. •Repair and fault management process •Billing Process •Wayleave management Process 	<ul style="list-style-type: none"> •Sales and quotation process •Service delivery process •Maintenance and support process •Permit to work and access control process. •Repair and fault management process •Billing Process •Wayleave management Process 	<ul style="list-style-type: none"> •Sales and quotation process •Service delivery process •Maintenance and support process •Permit to work and access control process. •Repair and fault management process •Billing Process •Wayleave management Process
Wayleaves and Licence Agreements	Wayleave IRU	Wayleave IRU	Wayleave IRU
Available Supporting Information	<ul style="list-style-type: none"> •Asset Maps •Product Definition •Standard Design Guidelines •Wayleaves Agreements •IRU Calculator •IRU Agreement •SLA Agreements •Access agreements •Access Request Templates •Permits to Work 	<ul style="list-style-type: none"> •Asset Maps •Product Definition •Rate Card •Standard Design Guidelines •Wayleaves Agreements •IRU Calculator •IRU Agreement •SLA Agreements •Access agreements •Access Request Templates •Permits to Work 	<ul style="list-style-type: none"> •Asset Maps •Product Definition •Rate Card •Standard Design Guidelines •Wayleaves Agreements •IRU Calculator •IRU Agreement •SLA Agreements •Access agreements •Access Request Templates •Permits to Work
Supporting Information Required to Access the Duct Network	<ul style="list-style-type: none"> •RAMs •Health and Safety Statements •High level designs •Low level designs •Evidence of Appropriate Insurance •Evidence of training and certification •Appropriate licencing •Signed Wayleaves •Approved permits to work •Access permits •Tax clearance 	<ul style="list-style-type: none"> •RAMs •Health and Safety Statements •High level designs •Low level designs •Evidence of Appropriate Insurance •Evidence of training and certification •Appropriate licencing •Signed Wayleaves •Approved permits to work •Access permits •Tax clearance 	<ul style="list-style-type: none"> •RAMs •Health and Safety Statements •High level designs •Low level designs •Evidence of Appropriate Insurance •Evidence of training and certification •Appropriate licencing •Signed Wayleaves •Approved permits to work •Access permits •Tax clearance
Actively Monitored Chambers	Case by case basis	Case by case basis	Case by case basis
Standoff Chambers	Case by case basis	Case by case basis	No
Management and Support Contact	Telecoms Units Management Agent Novegen	Telecoms Units Management Agent Novegen	Telecoms Units Management Agent Novegen

11. Process Maps

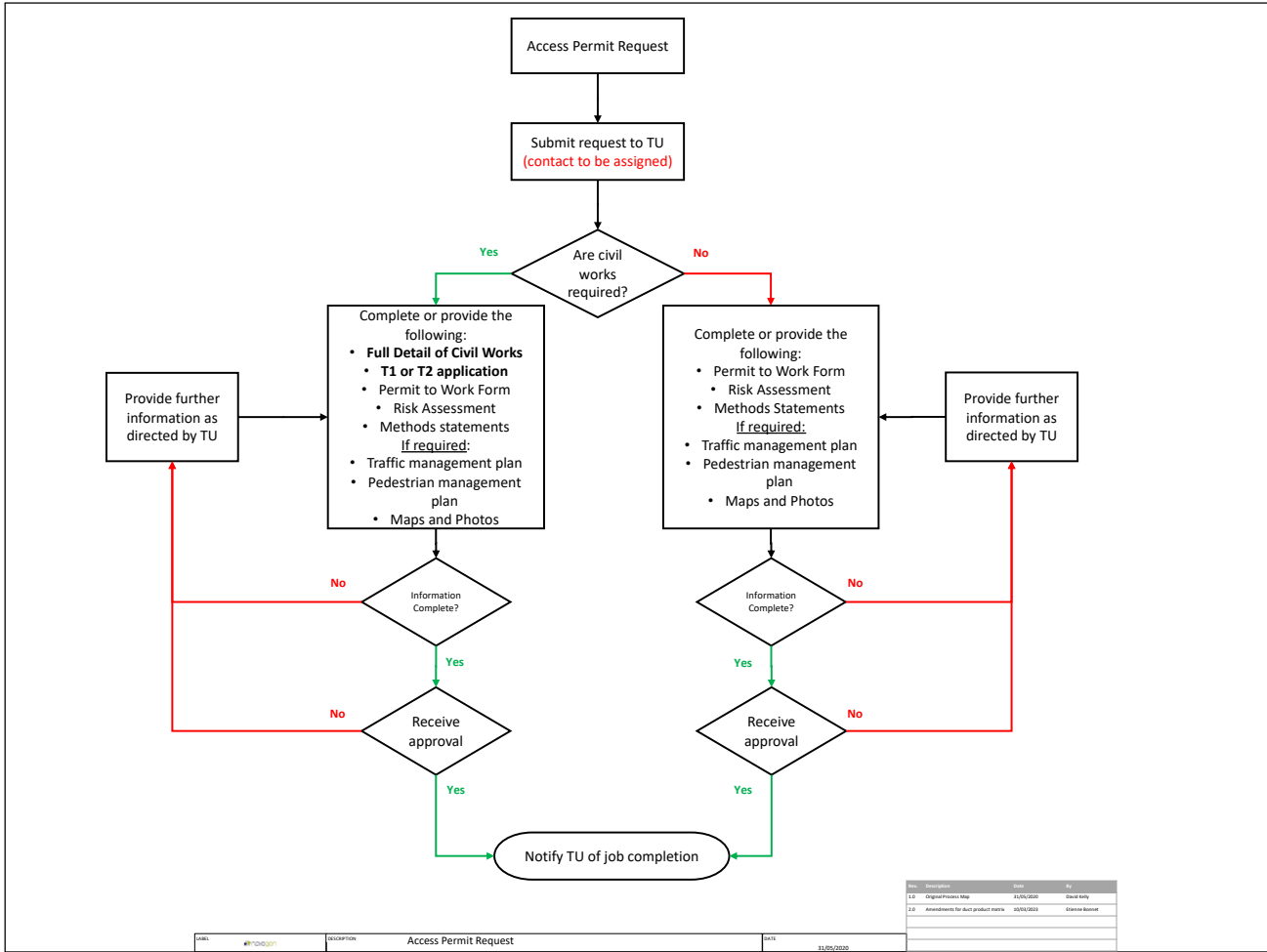
- Sales Quote Request



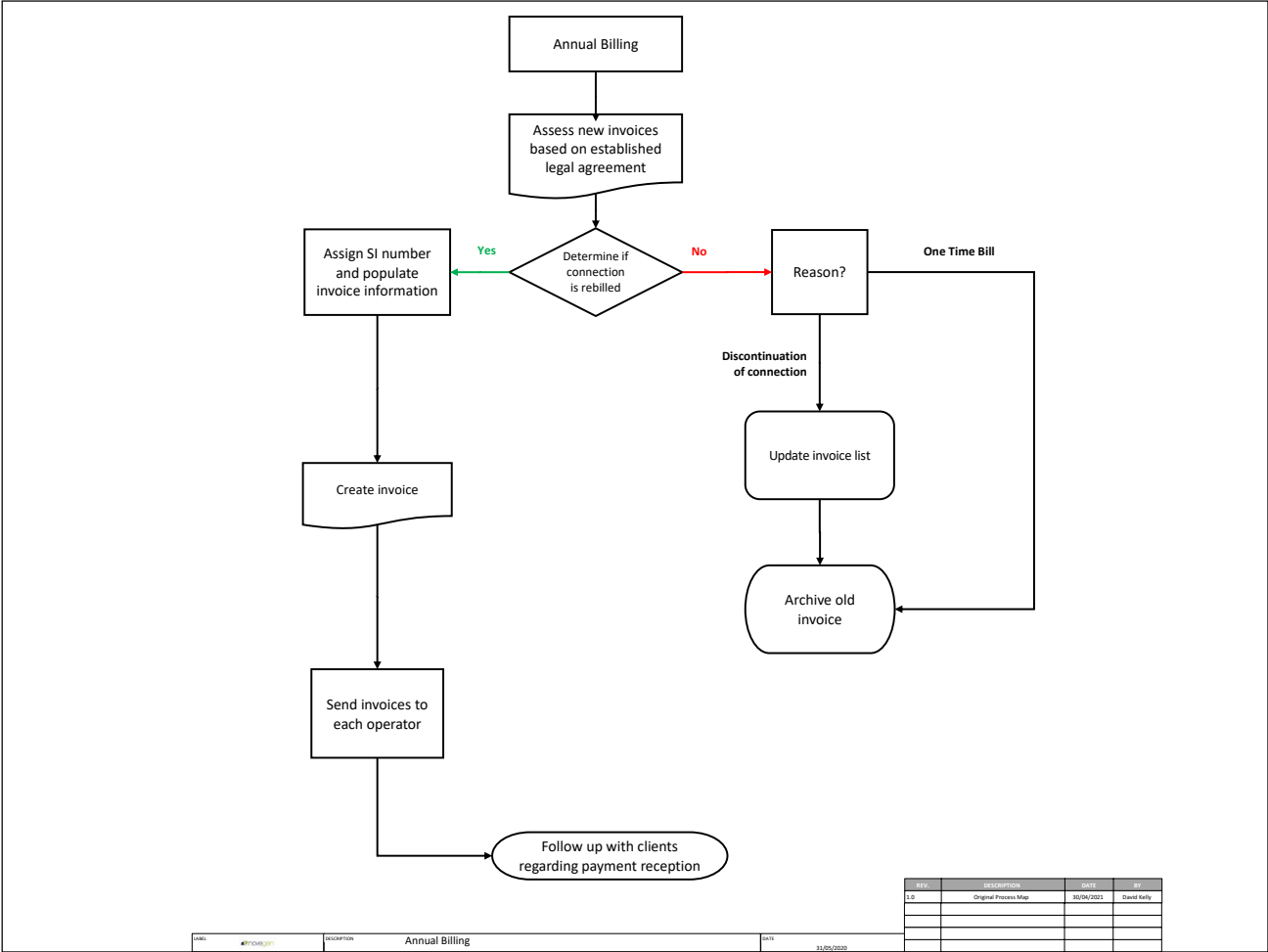
• Service Delivery



- Access Permit Request



- Annual Billing



DATE:	#817040/2021	DESCRIPTION:	Annual Billing	DATE:	31/05/2022
REV:	01	DESCRIPTION:	Original Process Map	DATE:	10/04/2021
REV:		DESCRIPTION:		DATE:	
REV:		DESCRIPTION:		DATE:	
REV:		DESCRIPTION:		DATE:	

Appendix A – Rate Card

DCC Duct Rate Card			
Product	Description	Unit	Rate
Sub-Duct Core	Where sufficient capacity exists to install sub-ducts in the network a 32/28 mm sub-duct (inner diameter 28mm, outer diameter 32mm) will be installed. Minimum value of €1,700 ex VAT applies (i.e., 500 metres). This is an annually recurring charge.	Per meter per year	€3.40
Micro-Duct Core	Where restricted capacity exists within the network a 10/14mm micro-duct (inner diameter 10mm, outer diameter 14mm) will be installed. Minimum value of €1,700 ex VAT applies (i.e., 500 metres). This is an annually recurring charge.	Per meter per year	€3.40
Connection Charges	One-off fee to include site surveys; drawings; administration; delivery and project management only. Note: this does not include the cost of the supply and installation of any materials which will be charged at cost.	Per Order	€1,650.00
Ancillary Services			
Cable recovery	Cables to be removed at Operators own expense under DCC Management Agent supervision - see 'Supervision' charge below.		
Blockage Clearance	Does not include carriageway reinstatement, out of hours work or traffic management.	Per blockage	To be charged as incurred.
Blockage Clearance (aborted)	Aborted clearance of a blockage in a duct per aborted clearance. Does not include carriageway reinstatement, out of hours work or traffic management.	Per blockage	To be charged as incurred.
Removal of locked lids		Per hour	To be charged as incurred.
Abortive time charge		Per hour, per operative	€55.00
Non-standard civils work	Any nonstandard civils works required to deliver a connection. This may include building connections, additional chambers, additional ducting runs etc. A detailed quote will be provided.	TBD	To be charged as incurred.
Supervision	Supervision of works (cable removal, connecting to chambers)	Per Hour	€125

