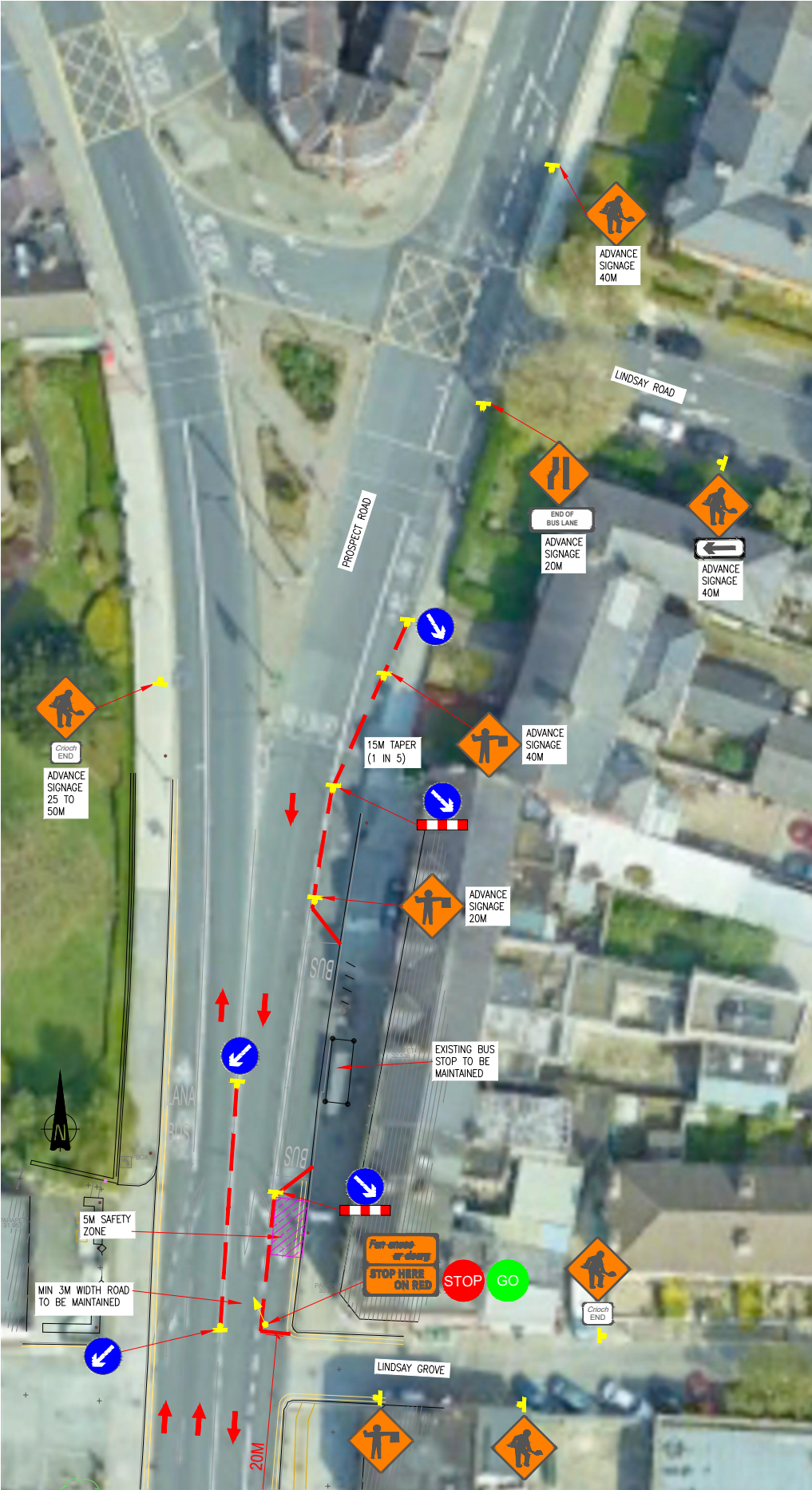


REFER TO DWG  
1322-TM-019

WORKS AREA AT PHILSBOROUGH  
ROAD JUNCTION - SURFACING STAGE 3



NOTES:

- Advance signs to be as per Chapter 8 - TTMS, Table 8.2.2.4 Level 1 (iii) Roads for Type A (<12 hours) Single Carriageway of 50 km/h
- End of Roadworks sign placed 20 to 50m from end of works area

Table 8.2.2.4 Minimum Design Parameters for Level 1 (iii) Roads (Single Carriageway of 50 km/h)			
Design Parameters	Type A > 12 hours	Type B < 12 hours	Type C < 15mins
Advance Warning Signage			
Sign Size (m)	600	600	-
Sign Visibility (m)	50	50	50
Number of Signs	2	2	-
Cumulative Distance (m)	40	40	-
Distance between Advance Warning signs (m)	20	20	-
Taper			
Lane Taper Rate <sup>A</sup>	1 in 5	1 in 5	-
Hard Shoulder Taper Rate <sup>A</sup>	-	-	-
Cones			
Cones Height (mm)	750	750	-
Taper Spacing (m) <sup>B</sup>	3	3	-
Longitudinal Spacing (m) <sup>B</sup>	3	3	-
Lamps (unit areas only)			
Taper Spacing (m)	6	6	-
Longitudinal Spacing (m)	6	6	-
Safety Zones			
Longitudinal (m)	5	5	-
Lateral (m)	0.5	0.5	-
Lanes			
Lane Width (m) <sup>C</sup>	3 (2.5)	3 (2.5)	-
Two-way Roadway Width (m)	5	5	-

Note:  
A 45° taper is required at shuttle traffic controlled layouts with cones at 1m centres  
B Cones spacing is the maximum permitted. Where geometry or any other site-specific reason dictates the spacing shall be reduced accordingly.  
C The optimum lane width for all classes of vehicles is 3.3m. This may be reduced to a minimum of 3m. Below this, HGVs and buses must be marshalled past the works. The absolute minimum lane width, if only cars and light vehicles are present, is 2.5m. Refer to Paragraphs 8.4.3.1 to 8.4.3.3.

LEGEND

- TRAFFIC FLOW
- HERRAS FENCE
- CONE
- CONSTRUCTION AREA
- SAFETY ZONE
- PEDESTRIAN ROUTE

2	AP	CG	CG	07/12/23	REVISED
1	AP	CG	CG	17/09/23	REVISED
Rev.	Drawn	Chkd.	Appvd.	Date	Description

Client

Contractor



Project Title

ROYAL CANAL GREENWAY  
PHASE 3

Drawing Title

TTM LAYOUT FOR  
PHILSBOROUGH RD  
JUNCTION - WORKS AREA  
SURFACING STAGE 3

Scale	Date	Drawn by
AT A1 1:250 AT A3 1:500	17/08/2023	AP

Drawing no.	Rev.
1322-TM-019	2