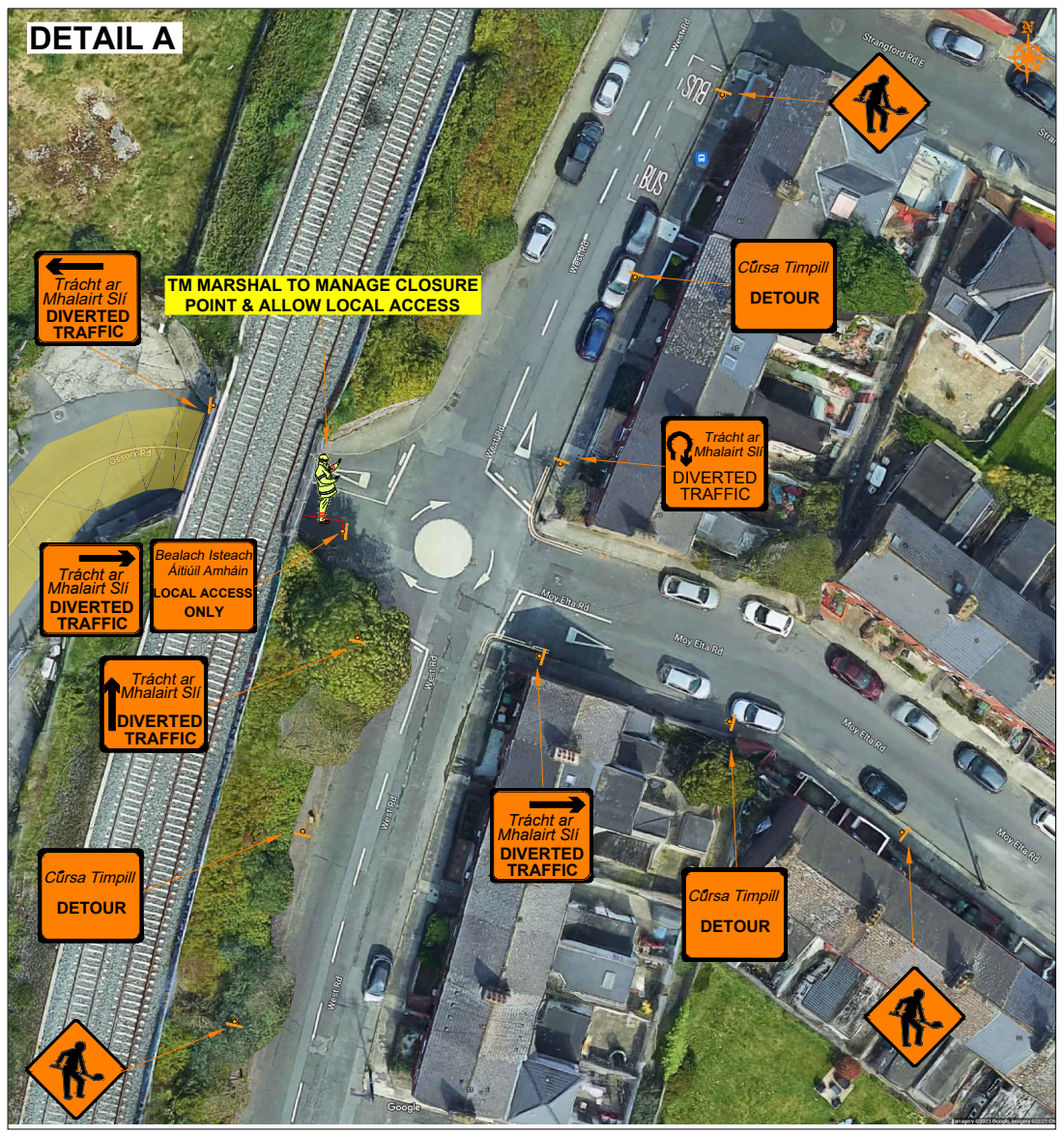
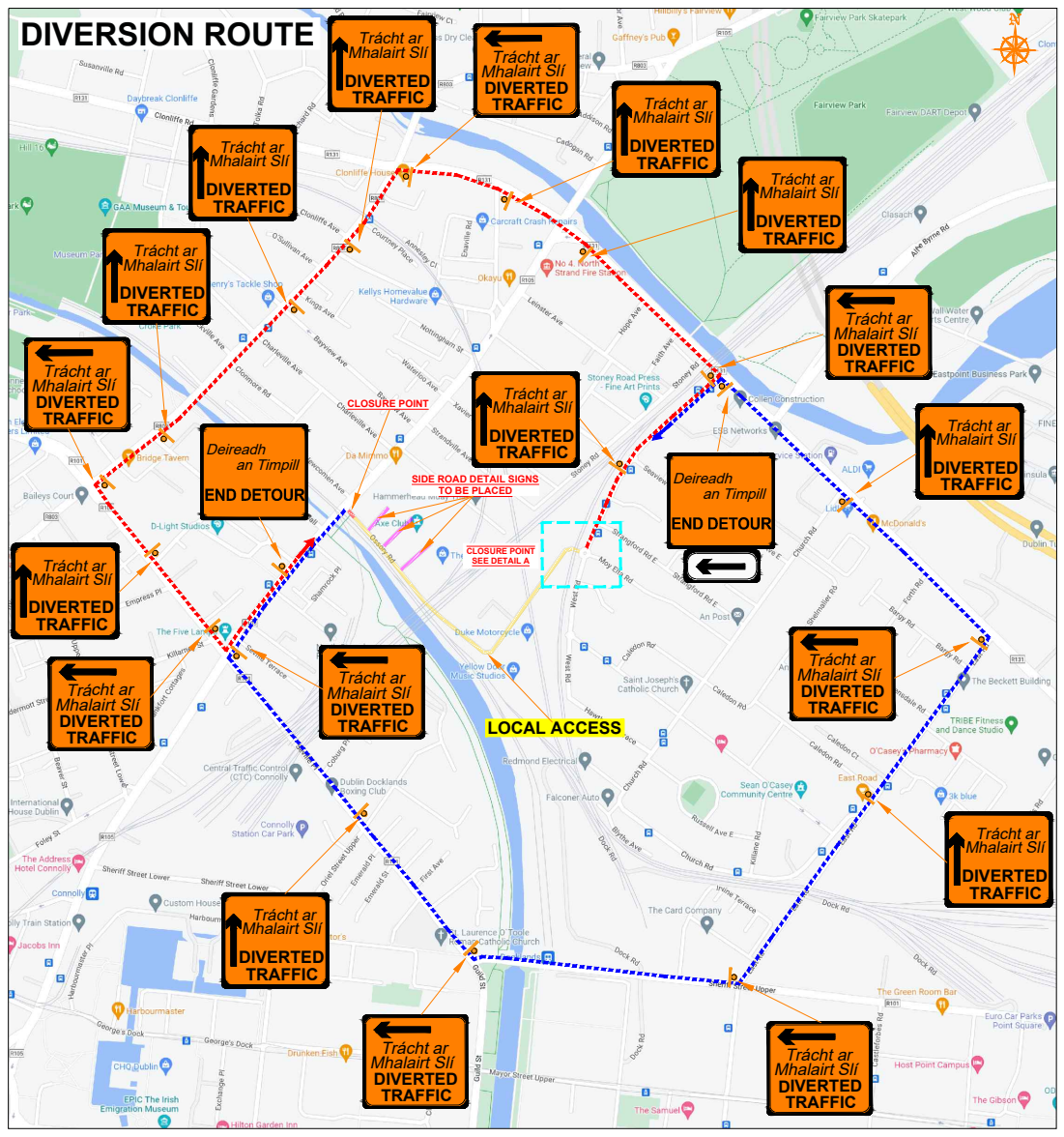
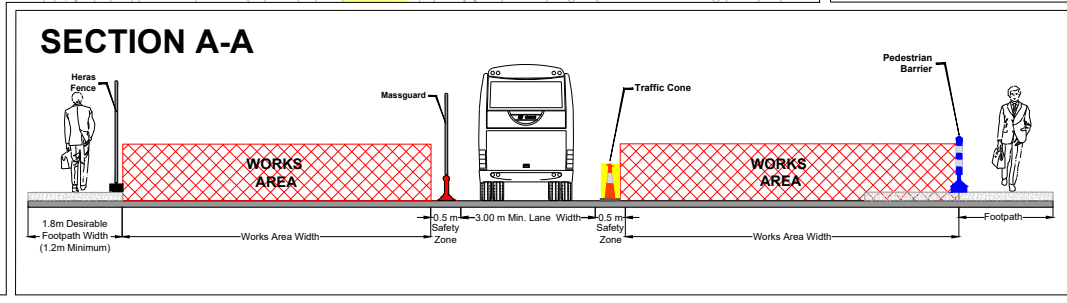
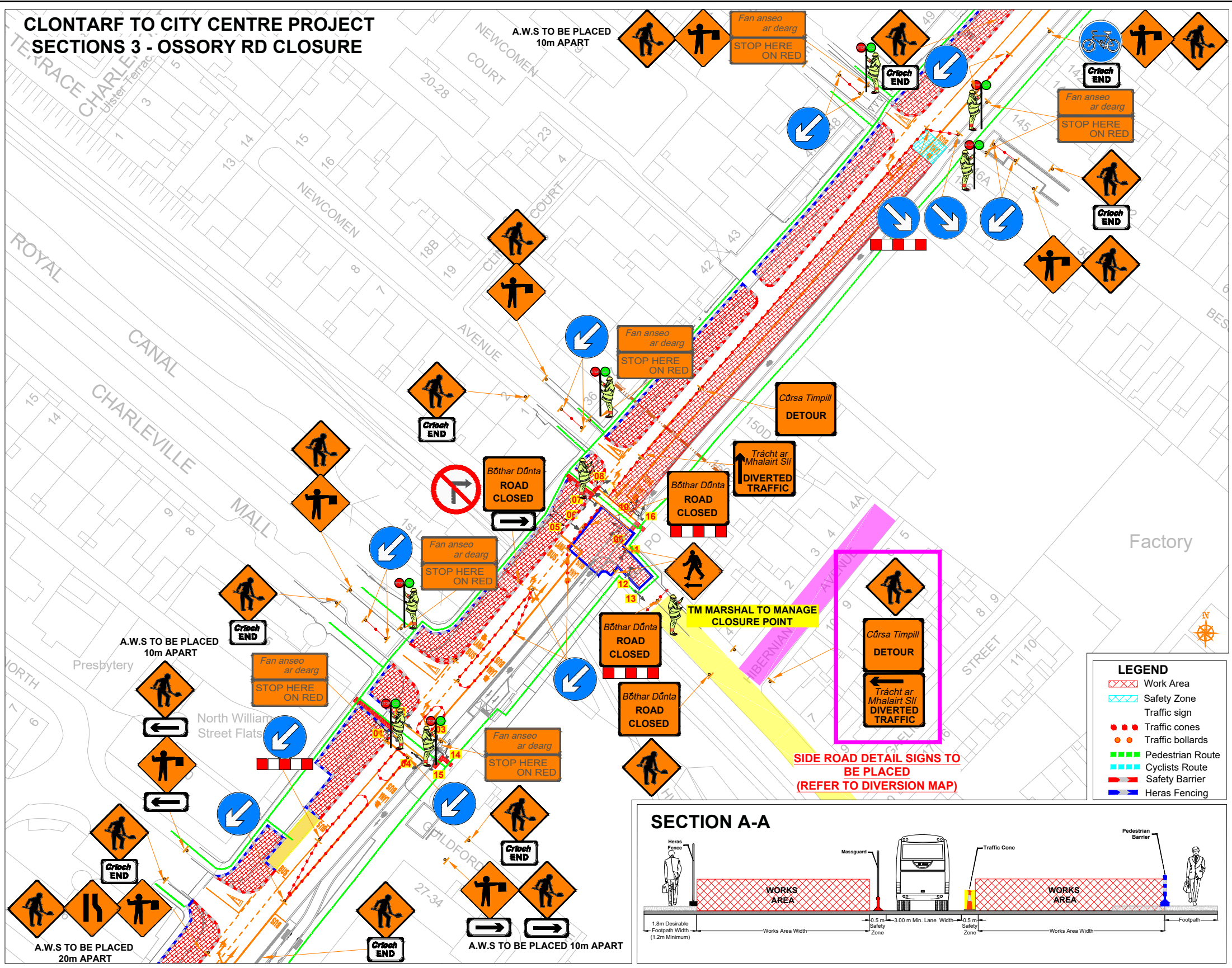


CLONTARF TO CITY CENTRE PROJECT SECTIONS 3 - OSSORY RD CLOSURE



ROAD CONTROL

Copyright Notes:
This drawing is the property of Road Control Services Ltd. The design information contained herein is strictly confidential. This document is not to be used, reproduced, disclosed or circulated in whole or in part without prior written consent.

CLIENT

CLONMEL ENTERPRISES
BUILDING & CIVIL ENGINEERING

DESIGN PARAMETERS

Speed Limit	60	Sign size (diamond)	600mm
Road Classification	1(IV)	Sign size (circular)	600mm
Roadworks type	A	Minimum Cone size	750mm
Number of advance signs	3	Cone spacing at tapers	3m
Sign visibility	60m	Cone spacing longitudinal	6m
Distance between signs	20m	Lateral Safety Zone	0.5m
Taper at lane	1 in 10	Longitudinal Safety Zone	15m
Taper at hard shoulder	N/A	Minimum lane width	3.0m

Rev	Date	Details	Drn	Chk	App	Drn	DS
						Chk	MA
						App	DH
						Date	22/04/2024
						Scale	A1 NTS A3 NTS
						Stage	CONSTRUCTION

Project

CLONTARF TO CITY CENTRE PROJECT

Title

**TRAFFIC MANAGEMENT PLAN
SECTION 3
OSSORY RD CLOSURE**

Drawing No C21020_00_077C Rev 0