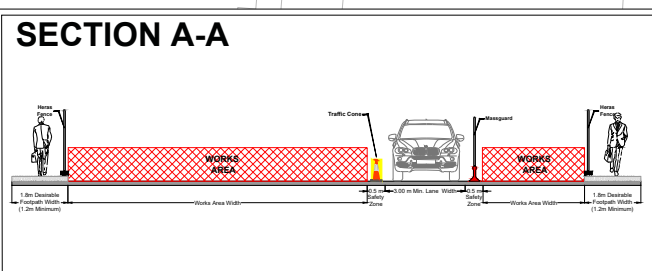
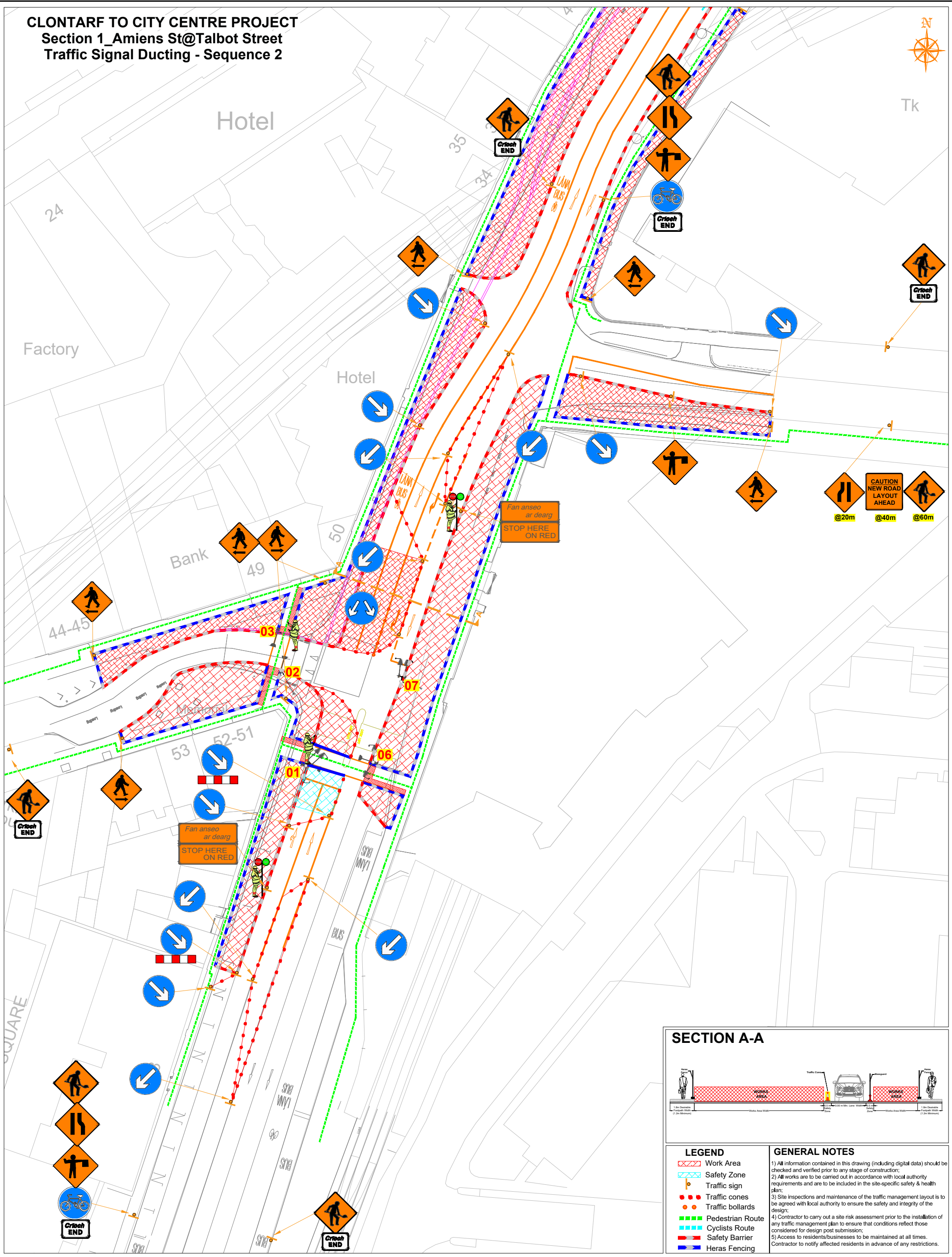


CLONTARF TO CITY CENTRE PROJECT
Section 1_Amiens St@Talbot Street
Traffic Signal Ducting - Sequence 2



LEGEND		GENERAL NOTES	
	Work Area	1) All information contained in this drawing (including digital data) should be checked and verified prior to any stage of construction;	GENERAL NOTES 1) All information contained in this drawing (including digital data) should be checked and verified prior to any stage of construction; 2) All works are to be carried out in accordance with local authority requirements and are to be included in the site-specific safety & health plan; 3) Site inspections and maintenance of the traffic management layout is to be agreed with local authority to ensure the safety and integrity of the design; 4) Contractor to carry out a site risk assessment prior to the installation of any traffic management plan to ensure that conditions reflect those considered for design post submission; 5) Access to residents/businesses to be maintained at all times. Contractor to notify affected residents in advance of any restrictions.
	Safety Zone	2) All works are to be carried out in accordance with local authority requirements and are to be included in the site-specific safety & health plan;	
	Traffic sign	3) Site inspections and maintenance of the traffic management layout is to be agreed with local authority to ensure the safety and integrity of the design;	
	Traffic cones	4) Contractor to carry out a site risk assessment prior to the installation of any traffic management plan to ensure that conditions reflect those considered for design post submission;	
	Traffic bollards	5) Access to residents/businesses to be maintained at all times. Contractor to notify affected residents in advance of any restrictions.	
	Pedestrian Route		
	Cyclists Route		
	Safety Barrier		
	Heras Fencing		

ROAD CONTROL

Copyright Notes:
 This drawing is the property of Road Control Services Ltd. The design information contained herein is strictly confidential. This document is not to be used, reproduced, disclosed or circulated in whole or in part without prior written consent.

CLIENT

CLONMEL ENTERPRISES
 BUILDING & CIVIL ENGINEERING

DESIGN PARAMETERS	
Speed Limit	60
Road Classification	1(IV)
Roadworks type	A
Number of advance signs	3
Sign visibility	60m
Distance between signs	20m
Taper at lane	N/A
Taper at hard shoulder	N/A
Sign size (diamond)	600mm
Sign size (circular)	600mm
Minimum Cone size	750mm
Cone spacing at tapers	3m
Cone spacing longitudinal	6m
Lateral Safety Zone	0.5m
Longitudinal Safety Zone	15m
Minimum lane width	3.0m

Rev	Date	Details	Drn	Chk	App	Drn	DS
						Chk	MA
						App	DH
						Date	10/04/2024
						Scale	A1 NTS A3 NTS
						Stage	CONSTRUCTION

Project	
CLONTARF TO CITY CENTRE PROJECT	
Title	
TRAFFIC MANAGEMENT PLAN Section 1_Amiens St@Talbot Street Traffic Signal Ducting - Sequence 2	
Drawing No	C21020_00_286A
Rev	0