



Tionscadal Éireann  
Project Ireland  
2040



Comhairle Cathrach  
Bhaile Átha Cliath  
Dublin City Council

# Active Travel Network Quarterly Report

To the Lord Mayor and  
Members of Dublin City Council

Report No. 13/2025.  
Report of the Assistant Chief Executive and City Engineer

---

## Quarterly Report of the Active Travel Programme Office – December 2024

---

### Table of Contents

1. INTRODUCTION.....	4
2. ACTIVE TRAVEL PROGRAMME OFFICE .....	4
3. KEY ACHEIVEMENTS DURING Q4 2024.....	5
4. COMMUNICATIONS AND COMMUNITY ENGAGEMENT .....	5
5. SCHEMES IN CONSTRUCTION.....	7
5.1. CLONTARF TO CITY CENTRE (C2CC) .....	7
5.2. ROYAL CANAL GREENWAY PHASE 3.....	9
5.3. DODDER GREENWAY – HERBERT PARK TO DONNYBROOK.....	12
5.4. SOUTH GRAND CANAL CYCLE SAFETY IMPROVEMENTS.....	13
5.5. EAST COAST TRAIL NORTH PHASE 1 .....	13
5.6. LIFFEY CYCLE ROUTE.....	13
5.7. KILMAINHAM TO THOMAS STREET (SUIR ROAD TO THOMAS STREET).....	14
6: SCHEMES IN DESIGN.....	14
6.1. ROYAL CANAL PHASE 4.....	14
6.2. DODDER GREENWAY.....	14
6.3. SANDYFORD (CLONSKEAGH) TO CITY CENTRE.....	15
6.4. KILMAINHAM TO THOMAS STREET CYCLE ROUTE.....	15
6.5. TRINITY TO BALLSBRIDGE.....	16
6.6. SIR JOHN ROGERSON QUAY PROJECT.....	16
6.7. GRAND CANAL GREENWAY (BLACKHORSE TO PORTOBELLO) .....	16
6.8. SANTRY GREENWAY.....	17
6.9. FINGLAS VILLAGE IMPROVEMENT SCHEME.....	17
6.10. FINGLAS TO KILLESTER.....	17
6.11. FINGLAS AREA ROUNDABOUTS SCHEME.....	17
6.12. NORTH CIRCULAR ROAD .....	18
6.13. RATOATH ROAD & CAPPAGH RD (CABRA TO BLANCHARDSTOWN) .....	18
6.14. DALYMOUNT TO CABRA CROSS.....	18
6.15. COOLOCK TO CLONTARF .....	18
6.16. KILBARRACK RD TO OSCAR TRAYNOR RD (BAYSIDE TO DONAGHMEDE).....	19

6.17. RINGSEND TO COLLEGE GREEN ..... 19

6.18. EAST WALL TO NORTH WALL ROAD ..... 19

6.19. KIMMAGE ROAD LOWER TO CLOGHER ROAD ..... 19

6.20. S2S CLONTARF BATHS..... 19

6.21. CHAPELIZOD ROAD TO CHAPELIZOD BYPASS (CONYNGHAM ROAD TO CHAPELIZOD VILLAGE SEGMENT) ..... 20

6.22. CHESTERFIELD AVENUE WALKING & CYCLING SCHEME ..... 20

6.23. SOUTH CITY LOOP PHASE 1 – SOUTH CIRCULAR ROAD ..... 20

COMPLETE ACTIVE PROJECTS TABLE – ..... 21

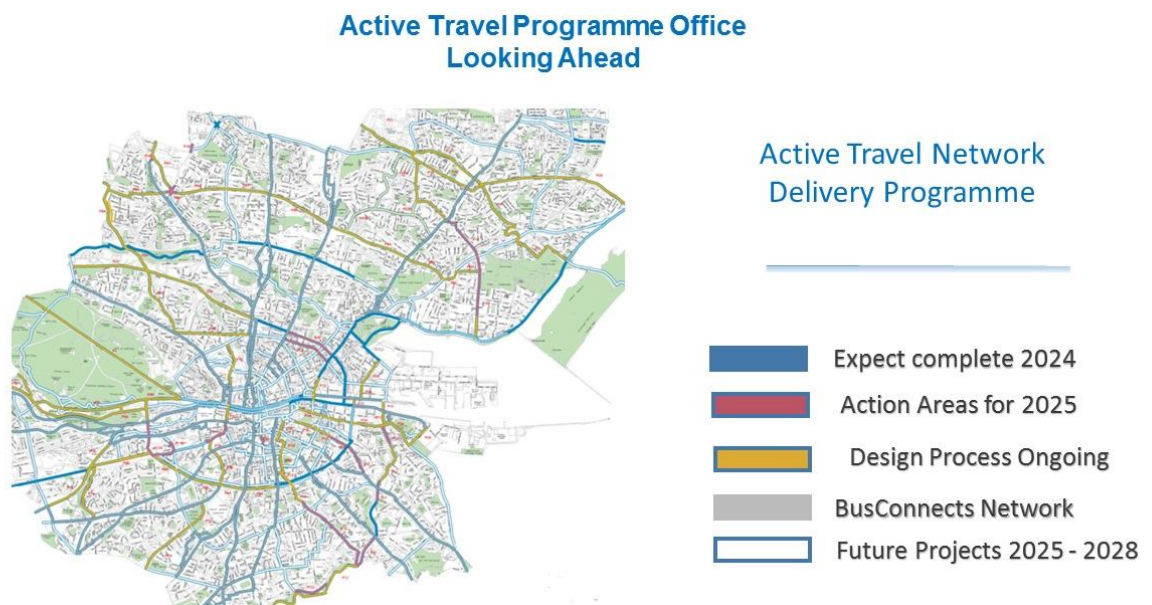
## 1. INTRODUCTION

Dublin City Council is developing a safer, inclusive and sustainable walk-wheel-cycle network. This Active Travel Network will enhance quality of life by 'connecting all the people' through improving access, connectivity and sustainable mobility. The network will also contribute to a citywide reduction of transport-related carbon emissions.

## 2. ACTIVE TRAVEL PROGRAMME OFFICE

The Active Travel Programme Office (AcTPrO) published the Dublin City Active Travel Network in October 2022, a network that will ensure that 95% of us will be within 400m of a connected 314km network. AcTPrO is responsible for the delivery of 214km of this network, through an agreed portfolio of 80 no. projects funded by the National Transport Authority (NTA). The NTA's Busconnects program will deliver an additional 90km.

A delivery programme for the 2025 to 2028 programme has been prepared in consultation with the National Transport Authority. Under this programme, at least eleven projects are planned to construction in 2025. The map below highlights the action areas for construction in 2025.



It is planned that design work will have been completed at least 50% of the network by end 2028. Over the same period, the pace of construction will depend on availability of funding with a third of the AcTPrO programme planned to be completed by end 2028.

Further information about the Active Travel Network, including an interactive GIS map of all routes and a complete list of roads and streets where activities are proposed is available on [www.dublincity.ie/activetravel](http://www.dublincity.ie/activetravel)

### 3. KEY ACHIEVEMENTS DURING Q4 2024

AcTPrO continues to refine the overall strategy for delivering a connected core active travel network for the city while also implementing several ongoing projects.

During this quarter:

- The Clontarf to City Centre scheme was substantially completed in October and officially opened on 28th November 2024.
- Elements of Royal Canal Greenway Phase 3 were substantially completed, including masonry works to the façade of the Bloody Sunday Bridge west side ramp in October. Works followed by the signalised pedestrian and cyclist crossing at Cross Guns Bridge and the installation of security fencing to Croke Park Industrial Estate, parapet railings and public lighting columns on the ramp structure in November.
- On the Liffey Cycle Route (Georges Quay to Aston Quay) Civil works were completed in November. However, the commissioning of lights could not be undertaken in December. These will now be carried out in the New Year.
- As part of the communications, engagement and promotion of active travel, a new awareness initiative on the use of bus stop by-passes was launched in December.

Ongoing projects are discussed further in Sections 5 and 6 of this report.

### 4. COMMUNICATIONS AND COMMUNITY ENGAGEMENT

AcTPrO works to provide clear, concise and accurate information to all project stakeholders including residents, businesses and all transport users on the delivery of the Active Travel Network. This is to ensure transparency and that individual projects are completed in a timely fashion. AcTPrO carries out communications to ensure stakeholders have access to regular updates on the status and progress of projects.

The AcTPrO communications plan uses a number of different channels to maximise delivery of the project messaging.

This quarter:

- Work began on a new behavioural change campaign. It is envisaged that the 'Be Sound' campaign will launch late January through digital, radio and an out of home billboard campaign. The campaign will highlight people's obligations to be safe and considerate when using the city's streets and greenways.
- AcTPrO's work on the first challenge of Dublin City Council's Climate Action Plan 2024 – 2029 continues. The Dublin Let's Move Project, focuses on children's' movement through the city, specifically their ability to move safely whether by walking, cycling wheeling or scooting. A report on the finding of community engagement was finalised in the quarter.
- AcTPrO engaged with Disabled People's Organisation on the following projects;
  - 1) Chesterfield Avenue
  - 2) Kimmage to Clogher Road
  - 3) Coolock to Clontarf (Gracefield Rd to Vernon Ave)
  - 4) Finglas to Killester
  - 5) Gracefield Road
  - 6) Sandyford-Clonskeagh-Charelmont St

- AcTPrO continues to grow and update [DCC Active Travel Alerts](#), a free notification service that individuals can subscribe to and receive useful and important updates on current Active Travel projects. There are currently 1,650 approx. subscribers. We sent out 8 alerts in this quarter.
- Dublin City Council has launched a new public consultation tool <https://engage.dublincity.ie/>. All new consultations from January will be published through this channel.
- Project information is available on the Dublin City Council website: [www.dublincity.ie/activetravel](http://www.dublincity.ie/activetravel). This is used to update project progress, provide further details on specific designs using maps, drawings, artist impressions, etc. and communicate different elements of the project. A section on how to contact the project team is also available. The team continues to operate a process for ensuring project webpages are regularly updated. In addition, AcTPrO maintains an active social media presence on DCC social media channels (LinkedIn, Facebook, X and Instagram) using the hashtags #activetravelnetwork and #climateaction, posting on average 3 times per week. This number is increased when there is a public consultation or event.

### Information Campaigns:

- AcTPrO continued to promote Public Information Campaigns on new infrastructure being used on the network; Continuous Footpaths and Amber Flashing Lights. A third information campaign on bus stop by-passes was launched in December.

### Community Engagement:

AcTPrO follows an implementation programme for the network which entails a process of engagements with key stakeholders, including business and interest group representatives, on how certain aspects of the network will be implemented. During these engagements, particular focus is placed on how the proposed interventions on the overall Active Travel Network can be delivered in a manner that enhances the benefits to the city, given that 95% of us will be within 400 meters of a connected network.

During this quarter;

- AcTPrO held early engagement events on two projects; Coolock to Clontarf, Vernon Avenue and Harold's Cross to Ballymount, Stanaway Road/Bangor Circle. This involved workshops with local businesses, community groups and DPO/DPRO's on potential routes for the area.
- AcTPrO launched the Clontarf to City Centre Project in November with an event in Fairview Park and additional campaign informing people the C2CC was open and thank people for their patience.

---

**Andy G. Walsh**  
Director for the Active Travel Programme

---

**John W. Flanagan**  
Assistant Chief Executive and City Engineer

# ADDITIONAL INFORMATION ON ACTIVE PROJECTS

Appended to Report No. 13/2025

## 5. SCHEMES IN CONSTRUCTION

### 5.1. Clontarf to City Centre (C2CC)

The Clontarf to City Centre Project will deliver 8km of walking facilities, 6km of cycling facilities, and 5.4km of bus lanes, from Alfie Byrne Road/Clontarf Road Junction to Amiens Street/Talbot Street Junction and a section of the Tolka Valley Greenway from Annesley Bridge to Alfie Byrne Road/East Wall Road Junction. Construction commenced in Q1 2022 and by October 2024 the Scheme Contractor was granted substantial completion with the vast majority of the Scheme open to the public. The remaining section through Marino was completed in time for the Official Opening on 28<sup>th</sup> November 2024.

A major diversion that was put in place in early August 2022 at Fairview Strand and resulted in a private car diversion through Ballybough and Portland Row was removed on 1<sup>st</sup> September 2024 thus restoring inbound traffic from Edge's Corner along Annesley Bridge Road onto North Strand Road to the Five Lamps junction.

The latest C2CC Consultative Forum which includes local Councillors and Representatives from local residents and businesses was held on Friday 15<sup>th</sup> October 2024 in Carleton Hall, Marino. The Project Team remain committed to engaging with the local residents and business owners along the route to discuss issues as they may arise.

Before and during Q4 of 2024 the site continued to undergo significant transformation and has achieved some major milestones;

Some of the main work activities carried out during the quarter include road re-construction, road surfacing watermain replacements, road drainage installations, upgrade of traffic signals and junctions, tree pit construction, resetting antique kerbing and new granite kerbing installations, public lighting and cycle track construction works.

By Q4 the scheme reached substantial completion and had the official opening with a number of significant deliverables realised;

- Information campaigns have been rolled out highlighting two significant design elements of the Scheme namely, (i) continuous footways and (ii) left flashing amber arrows at junctions.
- There are approx. 34no. side roads where pedestrians have been provided with a raised table to highlight their priority to cross and to assist with ease of travel.
- By end of November Q4 all of the 2.7km of cycle-track and footway in both directions is open and in use (between Clontarf Promenade and Amiens Street / Buckingham Street junction). Further 240m section on the Tolka Trail is open and in use.
- There are now 14no. new bus stops constructed with all 14no. now in use.
- All remaining wearing course and road markings such as that remaining at Talbot Street junction are now complete
- New junction upgrades installed at Alfie Byrne Road, Howth Road, Malahide Road, Annesley Bridge, Annesley Place, Ossory Road and Five Lamps junctions are all operating
- New pedestrian crossings have been installed at Buckingham Street, Charleville Mall and Waterloo Road with additional ped crossings opened and in use at Annesley Bridge and at Marino Mart before the end of November 2024.
- New watermain connections have all been completed with all of the 7km of watermain installed and in use and thus improves the security of supply for all those along the route who are connected to these new pipelines.
- Each of the approx. 280no. new public lighting columns are installed along the route to date providing improved and modern standard lighting to the streets with any remaining embellishments now in place.
- Landscaping, tree planting and other greening works continue with final few remaining areas being progressed all along the route.



- The Scheme Official Opening took place on 28<sup>th</sup> November 2024 and was well attended.

Further information on the project is accessible on the Dublin City Council webpages. The address is [www.c2cc.ie](http://www.c2cc.ie)



C2CC – Scheme Official Opening Ceremony (28<sup>th</sup> November 2024)

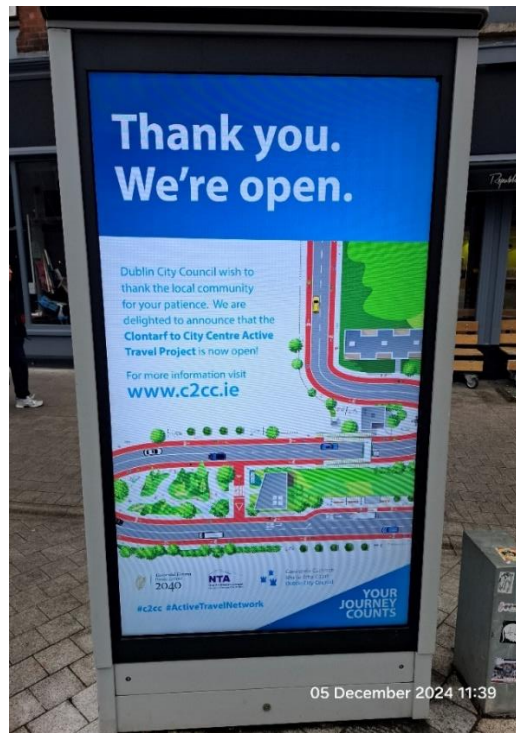


C2CC – Amiens Street and Talbot Street junction opened fully  
C2CC – Outbound Section between Malahide Road to Marino Mart Opened



C2CC – New pedestrian crossing at Marino Mart  
C2CC – North Strand Road Bus Stops open





C2CC – Thank you message on advert boards along the route

## 5.2. Royal Canal Greenway Phase 3

Royal Canal Greenway Phase 3 will provide 2.1km of cycling facilities and 2.1km of walking facilities along the Royal Canal, from Newcomen Bridge (North Strand Road) to Cross Guns Bridge (Phibsborough Road). The works contractor, Jons Civil Engineering Ltd, was appointed in December 2022. Construction commenced with the Lord Mayor of Dublin Caroline Conroy and Minister for Public Expenditure, National Development Plan Delivery & Reform, Paschal Donohoe TD, helping to 'turn the sod' on 15<sup>th</sup> February 2023. The scheme is scheduled for completion in Q3 2025.

### Section 1 - Cross Guns Bridge (Phibsborough Road) to Binns Bridge (Dorset Street Lower):

Works at Cross Guns Bridge (Phibsborough Road / Prospect Road / Whitworth Road junction) are substantially complete. The remainder of the snagging works and items identified in the Stage 3 Road Safety Audit are expected to be completed in January 2025. The new Toucan signalised crossing on Cross Guns Bridge was opened on Tuesday 26<sup>th</sup> November.



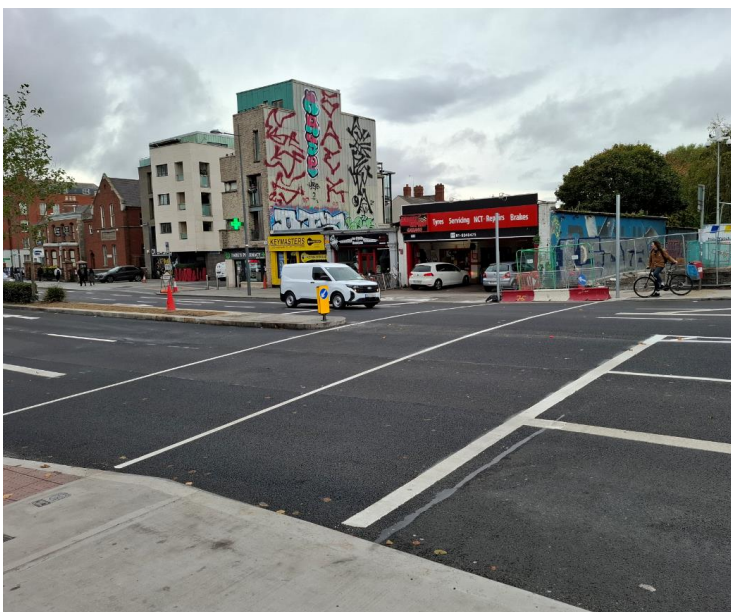
New toucan crossing on Phibsborough Road at Cross Guns Bridge



View of the greenway at night near Lock 4, looking towards Phibsborough

The section of south side canal towpath between Dorset Street Lower (Binns Bridge) and the access point at the rear of Saint Ignatius Road remains occupied by the works contractor to facilitate outstanding towpath works. These works comprise jointing and proving of ESB high voltage ducting, new kerbing, surfacing works, landscaping and the installation of a new boundary fence to the rear of Saint Ignatius Road, where the public right of way was recently extinguished. These works are scheduled for completion in March / April 2025.

Road works on Dorset Street Lower were substantially completed in October and at the Whitworth Road / Drumcondra Road Lower junction in November. These works included the diversion of existing gas mains and the installation of ESB and comms duct road crossings and associated chambers, a new Toucan crossing (not yet commissioned), new footpaths, road resurfacing, line marking and traffic loop works. Outstanding works include the installation of a new power supply for the traffic controller on the corner of Whitworth Road / Drumcondra Road Lower, snagging works and any items that may arise from a Stage 3 Road Safety Audit yet to be undertaken. The new Toucan crossing on Dorset Street Lower at Binns Bridge is scheduled to be commissioned in March / April 2025, once the south side towpath between Lock 3 and Binns Bridge has been opened to the public.



New surface and line markings on Dorset Street Lower at Binns Bridge



New chambers and ducting at the corner of Whitworth Road & Drumcondra Road Lower

### **Section 2 - Binns Bridge (Dorset Street Lower) to Bloody Sunday Bridge (Russell Street):**

Binns Bridge east side ramp structure works are ongoing. The ramp reinforced concrete upstand walls were constructed in October and new utility services (ESB / comms / gas) along the ramp structure were installed in November. The remaining concrete sections of the ramp structure (upstand walls & deck slab) are scheduled for completion in December. Masonry works along the ramp's façade commenced in December. Architectural works (ramp parapet railing & new seating area adjacent to Lock 2 / Binns Bridge) and landscaping works are due to commence in January 2025 and are scheduled for completion in May / June 2025.

Masonry works to the façade of the Bloody Sunday Bridge west side ramp were completed in October. The installation of security fencing to Croke Park Industrial Estate and parapet railings and public lighting columns on the ramp structure were completed in November.

Once works on both ramps have been completed, outstanding works along the towpath between the ramps will resume. It has been necessary to sequence these works accordingly due to the confined nature of the site, with limited means of access / egress. These works comprise sheet piling, ESB & comms ducting installations, kerbing and surfacing works (including resin-based surfacing) and are scheduled for completion in July / August 2025.





Ramp structure under construction  
to the east of Binns Bridge



Masonry completed on ramp structure  
to the west of Bloody Sunday Bridge

### **Section 3 - Bloody Sunday Bridge (Russell Street) to Clarke's Bridge (Summerhill Parade):**

Masonry works to the Bloody Sunday Bridge east side ramp were completed in October, with the exception of the section closest to the bridge. Hard landscaping works to the underpass area of the ramp beside the bridge are underway and due for completion by the end of December. The installation of parapet railings on the ramp commenced in October and are due for completion in January 2025, once necessary alterations have been made to the Croke Park boundary fence and the Davin Stand gangway.

The installation of new kerbing between the Bloody Sunday Bridge east side ramp and the Clarke's Bridge west side ramp is due to commence in December. All underground utilities are complete in this section.

Masonry works to the façade of the Clarke's Bridge west side ramp commenced in October. The installation of the remaining retaining walls at the ramp are due to commence in December once gas main diversion works have been completed in the area.



Masonry and railings on ramp structure  
to the east of Bloody Sunday Bridge



Masonry on ramp structure  
to the west of Clarke's Bridge

Roadworks on Summerhill Parade at Clarke's Bridge commenced in October and were paused in late November to facilitate Operation Open City. All utility road crossings were completed and some pole retention sockets, kerbs and chambers were installed in the footpath during this period. Outstanding works will resume in January, comprising the completion of the footpaths, road resurfacing, line marking, commissioning the new toucan crossing and decommissioning the old pedestrian crossing. Traffic will again be reduced to one lane in each direction during this period and these works are expected to be completed in February / March 2025.





High voltage electricity ducting being laid underneath existing utilities at Clarke's Bridge



Temporary reinstatement of footpath and carriageway at Clarke's Bridge

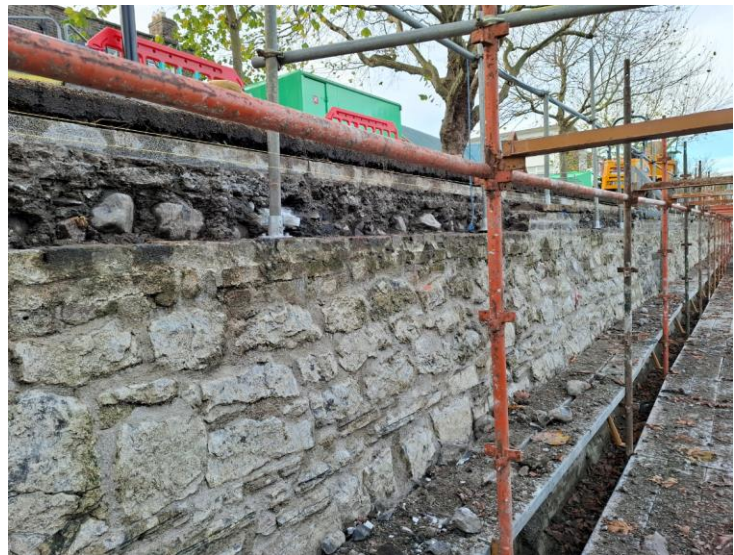
#### **Section 4 - Clarke's Bridge (Summerhill Parade) to Newcomen Bridge (North Strand Road):**

Piling works to stabilise the canal quay wall between Clarke's Bridge and Lock 1 (Charleville Mall) were completed in October. A mass concrete gravity wall, to stabilise a portion of the quay wall where it was not feasible to install piles, was constructed in November. Masonry repair works to the quay wall (approx. 200m long) commenced in October and are due for completion in December.

Preparations for the installation of a new gas main between Clarke's Bridge and Charleville Mall commenced in November and these works are due for completion in mid-December. Once this is in place, the construction of the remaining underground utilities and the capping beam for the piles can proceed.



Piles being driven between Clarke's Bridge & Charleville Mall



Repointing and repair work ongoing on canal quay wall at Charleville Mall

### **5.3. Dodder Greenway – Herbert Park to Donnybrook**

Construction started in Q4 2022 and was successfully commissioned in February 2024. The scheme was officially opened by Councillor Dermot Lacey and Minister Ryan, TD on 8th February 2024. Snagging works are now complete. Landscape Maintenance by the Main Contractor will continue until February 2025. Also an additional section of fencing is to be installed along Eglinton Terrace, with discussions on the details ongoing with the Leinster Branch of the Irish Rugby Football Union.



## 5.4. South Grand Canal Cycle Safety Improvements

The scheme involved the upgrade of existing signalized junctions, and 'tightening' of wide junctions to improve safety for pedestrians and cyclists and commenced in June 2022. The contract was substantially delayed due to the collapse and liquidation of the main contractor SIAC Construction in May 2023. The remaining works were divided into two packages - the resurfacing of the junctions and the completion of footpath works. Works are now substantially completed with only some minor snagging remaining to be completed in Q1 2025.

## 5.5. East Coast Trail North Phase 1

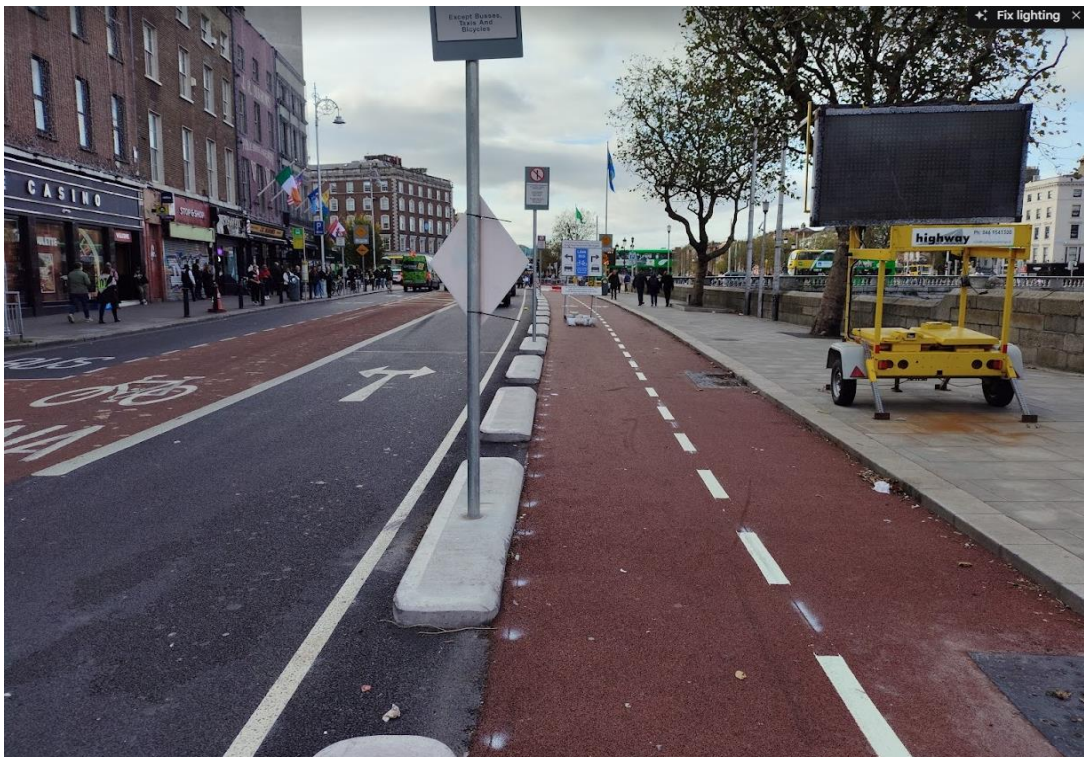
The scheme has provided 1KM of segregated cycling facilities from Alfie Byrne Road and East Wall Rd between the East Point Business Park and St Joseph's Primary school on East Wall Rd. Works are now complete.

## 5.6. Liffey Cycle Route

Work commenced in February 2024 along the south side of the River Liffey from Georges Quay to Aston Quay, the Contractor is Cairn Construction Ltd. The following works were to be constructed;

- A new two-way cycle track from George's Quay to Burgh Quay located on the river side of the quays
- A new one-way cycle track on Aston Quay located on the river side of the quay
- Closure of left turn slip from Burgh Quay to D'Olier Street
- New traffic islands and associated traffic signals
- Road resurfacing of George's Quay, Burgh Quay and Aston Quay
- Other associated works (ducting, road markings, drainage etc.)

Civil works are now complete on Aston Quay, Burgh Quay and Georges Quay. Aston Quay was substantially completed in Q4 2024. Traffic Lights will be commissioned in January 2025 at which time the scheme will be open.



Liffey Cycle Route - Georges Quay to Aston Quay

## 5.7. Kilmainham to Thomas Street (Suir Road to Thomas Street)

This Active Travel Route will deliver 2.6km of protected cyclepaths from Kilmainham Gaol along South Circular Road, Suir Road, Grand Canal View, St James Linear Park, James Walk, Forbes Lane, Marrowbone Lane and linking to Thomas St.

Suir Road to Thomas Street works on the interim measures from the Rialto Bridge junction to Marrowbone Lane along James Walk and Forbes Lane are substantially complete. The traffic light upgrades at Rialto Bridge junction have been completed in Q4 2024. There have been delays in applying coloured surfacing on the completed project which is expected to be carried out in Q1 2025.

For information relating to the design status of the full Kilmainham to Thomas Street Active Travel Scheme along this route, please refer to section 6.4 of this report.

## 6: SCHEMES IN DESIGN

There are 21 active travel schemes in the early planning and design phases.

### 6.1. Royal Canal Phase 4

#### Royal Canal Phase 4B

The project will deliver 4.3km of walking and cycling facilities along the Royal Canal, from Cross Guns Bridge (Phibsborough Road) to the city boundary at Ashtown.

There was no activity in the last quarter. The An Bord Pleanála decision on the Environment Impact Assessment Screening is still pending.

#### Royal Canal Phase 4C

Phase 4C is the Rail underpass on the main Greenway route, a ground investigation (GI) Contract which will guide the design is ongoing. Progress has been hindered by unavailability of the Ground Investigation Contractor.

### 6.2. Dodder Greenway

The scheme will deliver 7.5km of walking and cycling facilities along the Dodder River, from the River Liffey to Orwell Park. A further 9.5km is being delivered by South Dublin County Council.

Dublin City Council will in conjunction with DLRCC and SDCC deliver the route in sections with focus currently on 6 schemes as follows

- Fitzwilliam Quay to Londonbridge Road
- Beatty's Avenue to Herbert Park
- Donnybrook Road to Clonskeagh Road
- Clonskeagh Bridge to Patrick Doyle Road
- Orwell Road to Dodder Road Lower.
- Milltown Road-Dodder Walk to Dundrum Road.

Non-Statutory Public Consultations have been progressed on four of these routes as follows;

Section	Consultation period	Public Event Date & Location	Public Consultation Report Publishing Dates
Fitzwilliam Quay to	29/5/23 - 30/06/23	15/06/23 - Sandymount	Q4 2024

Londonbridge Road		Community Centre	
Beatty's Avenue to Herbert Park	29/5/23 - 30/06/23	15/06/23 - Sandymount Community Centre	Published July 2024
Donnybrook Road – Clonskeagh Road	02/11/23 - 08/12/23	09/11/23 – Donnybrook Community Centre	Q1 2025
Milltown Road -Dodder Walk to Dundrum Road.	08/02/24-15/03/24	22/02/24 - Milltown Parish Hall, Milltown Road	Q1 2025

- Detailed design is complete for the **Fitzwilliam Quay to Londonbridge Road** section with construction anticipated to commence in Q3 2025 subject to funding.
- **Beatty's Avenue to Herbert Park**, work is completed on the construction leaflet which is planned to be distributed before Christmas with construction scheduled to start in January 2025.
- **Clonskeagh Bridge to Patrick Doyle Road** section is being led by DLRCC – Active Travel, who are liaising with the DLRCC Parks Department on the proposal to widen the existing Dodder Trail.
- **Orwell Road to Dodder Road Lower** section. This section is being led by DLRCCC. A non-statutory public consultation has been carried out. DLRCC are currently out to tender to appoint a Consultant to bring the scheme to Detailed Design and Construction.
- **Donnybrook Road to Clonskeagh Road** in design, extensive engagement with DLRCC, NTA and DCC Traffic regarding Junction designs at Clonskeagh Road and Donnybrook Road has been undertaken. Scheme is planned to move to detailed design in Q1 2024 and is scheduled to commence construction in Q4 2025.
- **Milltown Road - Dodder Walk to Dundrum Road** – Further engagement with Eirgrid and ESB Networks about inclusions of 'Powering Up Dublin' High Voltage Ducting in the design is ongoing. The scheme is scheduled to commence detailed design in early 2025. Construction is planned to commence in Q3/Q4 2025.
- Quarterly meetings of the Dodder Steering Group, comprising officials and members of DLRCC, SDCC and DCC are due to recommence after the Steering Group is reform after the 2024 Local Elections.

### 6.3. Sandyford (Clonskeagh) to City Centre

The permanent scheme will deliver 3.1km of walking and cycling facilities, along Charlemont St., Ranelagh Road, Ranelagh, Sandford Road and Clonskeagh Road.

Following on from the non-statutory public consultation held in Q1 2023 a Public Consultation Report has been completed and was published on the DCC website in Q4 2024.

For the proposed interim scheme, the detailed design has been completed and the scheme has been tendered. It is expected to go to site early in Q1 2025. Engagement with local interests will continue regarding accommodation for commercial vehicle loading on the scheme. Detailed design is now underway on the permanent scheme on the section from Woodstock Gardens on Sandford Road to the City Council boundary at River Dodder on Clonskeagh Road.

### 6.4. Kilmainham to Thomas Street Cycle Route

This active travel route will deliver 2.6km of protected cyclepaths and improved pedestrians facilities from Kilmainham Gaol along South Circular Road, Suir Road, Grand Canal View, St James Linear Park, James Walk, Forbes Lane, Marrowbone Lane and with a link to Thomas St. Works on the installation of advanced cycling infrastructure measures from the Rialto Bridge junction to Marrowbone Lane along James Walk and Forbes Lane

commenced in August 2023 and are now substantially complete. The concept design for permanent measures for the full route of the Kilmainham to Thomas Street project is on progress.

The upgrade of the Suir Road junction is a priority due to safety concerns. It is proposed be delivered in advance of other sections of the route:

**Suir Road/ Dolphins Road/ Davitt Road/ Slievenamon Road junction.** Public Consultation of the scheme took place over the summer 2024. There was significant interest in the scheme and given the high volume of submissions, it is expected to be Q1 2025 when the Public Consultation Report and the updated design will be published. This junction upgrade is planned to commence Construction in Q4 2025.

A Concept and Options report which identifies the preferred options for permanent measures for all the streets on the route has been approved by the NTA and the Consultants are progressing with the preliminary design. Public Consultation for this design is expected to be Q1 2025.

## 6.5. Trinity to Ballsbridge

The Trinity to Ballsbridge Walking & cycling route is to be delivered in two Phases:

- **Phase 1: Holles St to Lansdowne Road** along Mount Street Lower and Northumberland Road. This phase will deliver 1.6km of segregated cycle tracks using light protective measures and roadmarkings. The Public Consultation Report for this project was published in February 2024. It is expected that project will go to construction tender in the coming month. The installation of the scheme is planned for Q4/2024/ Q1/2025.
- **Phase 2: Dawson St to Holles Street** along Nassau Street, Clare Street and Merrion Square North. Concept Design for this Phase along with permanent measures for Phase 1 is to commence in Q1 2025.

## 6.6. Sir John Rogerson Quay Project

The route options selection process and design work is ongoing for the Sir John Rogerson Quay Project. The project is being led by the Docklands Office in collaboration with City Architects. The project objectives are to deliver a coherent, high-quality integrated public realm for the city that protects and enhances the existing national monument of the quay wall. The project will co-ordinate key infrastructure including active travel, flood defence, BusConnects link to Ringsend and the existing docking facility for sea vessels along the South Campshire in line with the DCC North Lotts and Grand Canal Dock SDZ.

The project is to be delivered as part of the City Centre to Ringsend BusConnects scheme. AcTPRO support the project to ensure the needs of pedestrians and cyclists are met, as well as coordinating on the integration with the wider Active Travel Network.

## 6.7. Grand Canal Greenway (Blackhorse to Portobello)

The Grand Canal Greenway (Blackhorse to Portobello) is currently at the Concept Development and Options Selection Phase. A Strategic Assessment Report was completed and submitted to the NTA in 2023. The Active Travel Design Office (AcTDO) has been appointed to progress the project. The work will build on the previous design completed in 2015 and integrate a number of other major projects along the route such as the refurbishment of Portobello Harbour, BusConnects Core Bus Corridors, Dolphin House redevelopment and the ESB Networks high cable replacement projects.



Work is progressing on the options development of and identification of an emerging preferred route. This project phase is expected to be completed in Q1 2025 and will be presented to the local community and stakeholders through a non-statutory public consultation. The outcome of the option selection process and updated ecological screening reports will determine the statutory approval process and programme for construction.

## 6.8. Santry Greenway

The project is being led by the Water Framework Directive Office in collaboration with Fingal County Council and DCC Active Travel Programme Office. The route options were reviewed following a series of public consultations events held in 2023, and an emerging preferred route has been identified. Subsequent public consultation events were carried out in September 2024 to allow the local community and other stakeholders to comment on the preferred route. The comments received are now being reviewed and integrated into the masterplan for the project.

## 6.9. Finglas Village Improvement Scheme

The Finglas Village Improvement Scheme was approved by the NTA to go to non-statutory public consultation earlier this year. The public consultation was open for feedback on DCC's Consultation Hub for 5 weeks, from Monday 12<sup>th</sup> February 2024 to Friday, 15<sup>th</sup> March 2024, Information leaflets were distributed to 9,300 residential houses and businesses in the vicinity of the route, drawings were available to view in hard copy format in local libraries for the duration of the consultation period.

A public information event was held on Thursday 29<sup>th</sup> February in Finglas Sports and Fitness Centre, to provide the public with an opportunity to meet the project team and discuss the proposals. Following the public consultation, the design is being modified where appropriate taking into account the feedback from the public and detailed design drawings will then be prepared. Once approval is obtained from the National Transport Authority, a contractor will be procured and the scheme installed. With appropriate permissions received the scheme is expected to go to site in Q2 2025. A project webpage is active; updates on the scheme will be available on the website ([dublincity.ie/activetravel](http://dublincity.ie/activetravel)) as the project progresses.

## 6.10. Finglas to Killester

The Finglas to Killester Active Travel Scheme proposes the development of improved, or new, Active Travel infrastructure between Finglas and Killester. The route commences on McKee Avenue and Cappagh Road to the north and west of Finglas village centre respectively, and extends to St Anne's Park in the east via Killester village. The route is approximately 10km in length and is primarily along the R103 regional road (incorporating Glasnevin Avenue, Collins Avenue and Collins Avenue Extension). East of Killester village the scheme travels along Howth Road and Furry Park Road before entering St Anne's Park.

The Finglas to Killester Active Travel Scheme is currently at the Concept Development and Options Selection phase; this phase is expected to be completed in Q2 2025. The Preliminary Design commences after the current phase, followed by a Public Consultation period proposed in Q1 2026. The Detailed Design then follows with the scheme expected to go to construction in 2028. The project webpage is currently being set up; updates on the scheme will be available on the website ([dublincity.ie/activetravel](http://dublincity.ie/activetravel)) as the project progresses.

## 6.11. Finglas Area Roundabouts Scheme

This project will address the pedestrian and cycle priority at two separate junctions:

- Jamestown Road Roundabout has four arms forming a junction between Jamestown Road (north and south arms), Melville Road (west arm) and Poppintree Park Lane (east arm).
- St. Margaret's Road Junction with McKee Avenue is comprised of a four-arm roundabout. One of these arms is the entrance and exit for a Lidl supermarket.

Preliminary design is being finalised for both St Margaret's Road/McKee Road roundabout and the Jamestown Road roundabout. The project will be phased with the pedestrian crossings on St Margaret's Road/McKee Road roundabouts to be progressed in advance of the Jamestown Road Roundabouts. Construction is to commence in 2025 subject to NTA approval and funding availability.

## 6.12. North Circular Road

The North Circular Road Project aims to provide segregated cycling facilities along a 5.5km route from Infirmary Road at the junction with Conyngham Road and Parkgate Street to Seville Place at the junction with Guild Street. The project will be delivered in five schemes and the Active Travel team are currently progressing with the **Dorset St Lower. to Amiens St** section.

This Active Travel Scheme will deliver 1.1km of protected cycle paths, improved pedestrian facilities and cycling friendly upgrade to the signalised junctions at Belvedere Road, Fitzgibbon Street and Summerhill. Public Consultation on an interim scheme design was undertaken in 2023. A significant revision of this previous design following review of public consultation submissions and in line with new NTA Cycle Design Guidance has been carried out. This revised design was submitted to the NTA and approved in Summer 2024. A second round of Public Consultation is now to be undertaken on the new design. The project team are currently engaging with key stakeholders. A report on the first Public Consultation will be published along with the revised designs in Q1 2025.

## 6.13. Ratoath Road & Cappagh Rd (Cabra to Blanchardstown)

This Active Travel Route will deliver 4.1km of protected cycle paths and improved pedestrian facilities along Ratoath Road and Cappagh Road. The scheme commences at the junction of Navan Road/ Cabra Road and finishes at the junction of Cappagh Road /Avila Park near the border with Fingal County Council. Consultants are progressing with Preliminary Design. The Public Consultation Report will be published when preliminary design is concluded which is expected to be in Q1 2025.

The planning and design for a separate Ratoath Road Upgrade (1km) project from Westwood to Ratoath Avenue is proceeding in parallel with the above 4.1km Active Travel route project. Feasibility and options assessment has commenced. Consultants have commenced undertaking a constraints assessment and the development of concept designs for a full road upgrade including walking and cycling facilities.

## 6.14. Dalymount to Cabra Cross

The Dalymount to Cabra Cross scheme will provide 1.5km of improved walking & cycling facilities from Cabra-Road; from Cabra Cross (junction with the Navan Road) to Dalymount (junction with the North Circular Road). The scheme and concept development and options selection commenced in August 2024. A Feasibility and Options Report along with a concept design is to be submitted to the NTA for review by Dec 2024.

## 6.15. Coolock to Clontarf

The Coolock to Clontarf walking and cycling route is 5.1km in length and is proposed to be delivered in three Phases:

- **Phase 1- Gracefield Rd to Vernon Avenue** along Gracefield Road, Brookwood Avenue, Sybil Hill Road and Vernon Ave. (2.6km). In Sep 2024 the updated preliminary design along with the Public Consultation Report was published on the active travel webpage. A Public Information Event was held in Artane Coolock Family Resource Centre in Sep, 2024 to inform the community of the key design changes. The project is now at detailed design stage which is ongoing and expected to be concluded in Q2 2025.

**Phase 2- Vernon Ave to Clontarf Rd** along Vernon Avenue terminating at the junction with Clontarf Road. Engagement with stakeholders was undertaken in November Q4 2024 to assist in the

development of concept designs. Separate workshops took place with Disabled Persons Organisations (DPO's), Clontarf Business' Association, and Clontarf Residents' Association. A summary report of the early engagement consultation to be issued to the groups in Dec 24/Jan 25.

- **Phase 3- Artane Roundabout to Clonshaugh Road** from Artane Roundabout, along Ardlea Road, Kincora Rd, Oscar Traynor Rd, Clonshaugh Rd, Concept design is programmed to commence in Q1 2027.

## **6.16. Kilbarrack Rd to Oscar Traynor Rd (Bayside to Donaghmede)**

This Active Travel Route will deliver 5.14km of light segregation protected cycle paths and improved pedestrian facilities along Kilbarrack Rd, Tonlegee Road and Oscar Traynor Rd from the junction with James Larkin Road to the junction with Bunratty Road. Currently, consultants are developing the Preliminary Design Report and Preliminary Business Case for the project. The Public Consultation Report will be published when preliminary design stage deliverables are finalised and approved in Q1 2025.

## **6.17. Ringsend to College Green**

This 2.8km active travel scheme will provide a segregated cycle route and improved walking facilities from Ringsend along Pearse Street to College Green. The scheme and concept development and options selection commenced in August 2024. A Feasibility and Options Report along with a concept design is to be submitted to the NTA for review in Q1 2025.

## **6.18. East Wall to North Wall Road**

The North Wall Quay to East Wall Road scheme will provide 1Km of improved walking & cycling facilities from North Wall along New Wapping Street and East Road, linking to the active travel scheme recently constructed at East Wall Road. Concept development and options selection commenced in August 2024. Engagement with stakeholders in the community is planned to be undertaken in Q1 2025.

## **6.19. Kimmage Road Lower to Clogher Road**

This active travel route will provide 1.9km of improved walking & cycling facilities from Kimmage Road Lower to Clogher Road. Engagement with stakeholders was undertaken in December Q4 2024 to assist in the development of concept designs. Workshops took place with Disabled Persons Organisations (DPO's), Business' and Residents' in Dec 2024. A summary report of the early engagement consultation to be issued to the groups in Jan 25.

## **6.20. S2S Clontarf Baths**

The Active Travel Programme Office, with the support of the Planning and Development Department issued the Heads of Terms to enable the transfer of lands required for the development. Agreement has not been reached with the landowner, AcTPRO will endeavour to seek a new agreement and proceed to complete the detailed design with a view to proceeding to construction when funding becomes available.

## **6.21. Chapelizod Road to Chapelizod Bypass (Conyngham Road to Chapelizod Village Segment)**

The Chapelizod Road to Chapelizod Bypass (Conyngham Road to Chapelizod Village Segment) scheme will provide 3.1Km of improved walking & cycling facilities from Chapelizod Village to the junction of Conyngham Road and Chesterfield Avenue at the entrance to the Phoenix Park, linking to the Liffey Cycle Route. Concept development and options selection commenced in August 2024. Works were ongoing in Q4 on the options selection phase which is anticipated to be completed in Q1 2025

## **6.22. Chesterfield Avenue Walking & Cycling Scheme**

The Chesterfield Avenue Walking & Cycling Scheme involves the upgrade of walking and cycle facilities in the Phoenix Park between Castleknock and Conyngham Road/Parkgate Street in a manner that is in keeping with the vision for the park into the future. It has been identified that improvements are needed to the built environment in the Phoenix Park to make the park a safer and more user-friendly place for pedestrians & cyclists. In particular, the infrastructure needs to be upgraded to provide improvements for people who may have mobility impairments, for wheelchair users, people with buggies and prams, and people with disabilities.

The National Transport Authority have granted approval for the Chesterfield Avenue Project. The Active Travel Programme Office in Dublin City Council will provide project management services to deliver the project through the design, planning and construction phases, and will work collaboratively with the OPW to design and deliver the project.

The project is currently at the concept development and option selection phase. This phase is expected to be completed in Q1 2025 and will be presented to the local community and stakeholders through a non-statutory public consultation. The outcome of the option selection process and updated ecological screening reports will determine the statutory approval process and programme for construction.

## **6.23. South City Loop Phase 1 – South Circular Road**

The Active Travel Programme Office (AcTPRO) with the support of the National Transport Authority, propose to upgrade the junction of South Circular Road and Brookfield Road. This junction is at the entrance to the new Children's Hospital and St James Hospital. The objective of the project is to provide high quality pedestrian and cycle routes through the junction.

The project is part of the South City Loop in the DCC core Active Travel Network. When fully completed, it will provide 9km of high quality walking and cycling facilities linking Kilmainham to Ballsbridge. The proposed route will also link Rialto, Crumlin, Kimmage, Harolds Cross, Rathmines, Ranelagh and Donnybrook.

The project is currently at the concept development and option selection phase. This phase is expected to be completed in Q1 2025 and will be presented to the local community and stakeholders through a non-statutory public consultation. The project is anticipated to go to construction in advance of the opening of the hospital in 2025, subject to the preferred option being identified, environmental screening reports and funding availability.





## Complete Active Projects Table –

NTA Code	Project Name	Committee Area (s)	Length (km)	Additional Information
DCC/12/0007	Royal Canal Greenway - Phase 3	Central Area (CA)	2.1	Update in item 5.2 of report
DCC/12/0008	Liffey Interim Scheme ( Georges Quay to Crampton Quay)	South East (SE)	0.8	Update in item 5.6 of report
DCC/12/0016	Finglas Village Improvement Scheme	North West (NW)	0.2	Update in item 6.9 of report
DCC/12/0024	Grand Canal (Blackhorse to Portobello)	SC, SE	4.5	Update in item 6.7 of report
DCC/12/0033	Clontarf to City Centre	CA, NCA	3	Update in item 5.1 of report
DCC/12/0035	Dodder River Greenway	South East (SE)	5.2	Update in item 6.2 of report
DCC/14/0001	Sandymount (Clonskeagh) to Charlemont Street	South East (SE)	3.2	Update in item 6.3 of report
DCC/18/0001	Dodder Greenway - Herbert Park to Donnybrook Road	South East (SE)	0.5	Update in item 5.3 of report
DCC/18/0009	South Grand Canal Cycle Safety Improvements	South East (SE)	2.2	Update in item 5.4 of report
DCC/19/0002	East Coast Trail - Alfie Byrne Road to Sheriff Street	Central Area (CA)	1.5	Update in item 5.5 of report
DCC/19/0006	Finglas Area Roundabouts Scheme	North West (NW)	0.1	Update in item 6.11 of report
DCC/21/0001	Finglas to Killester	NC, NW	9.5	Update in item 6.10 of report
DCC/21/0006	Chapelizod Road to Chapelizod Bypass	South Central (SC)	4.8	Update in item 6.21 of report
DCC/21/0007	Kilmainham to Thomas Street	South Central (SC)	2.6	Update in item 5.7 & 6.4 of report
DCC/21/0009	Coolock to Clontarf	North Central (NC)	2.5	Update in item 6.15 of report
DCC/21/0011	Santry River Greenway	North Central (NC)	7	Update in item 6.8 of report
DCC/21/0017	Ringsend to College Green	South East (SE)	3.6	Update in item 6.17 of report
DCC/21/0020	North Circular Road	Central Area (CA)	3.3	Update in item 6.12 of report
DCC/21/0028	Cabra to Blanchardstown	CA, NW	5.1	Update in Item 6.13 of report
DCC/21/0030	Chesterfield Avenue	Central Area (CA)	4.2	Update in item 6.22 of report
DCC/21/0031	Kilbarrack Rd to Oscar Traynor Rd (Bayside to Northside)	North Central (NC)	6.8	Update in item 6.16 of report
DCC/22/0003	Sir John Rogersons Quay	South East (SE)	0.5	Update in item 6.6 of report
DCC/22/0004	Clontarf Baths Active Travel Elements	North Central (NC)	0.1	Update in item 6.20 of report



NTA Code	Project Name	Committee Area (s)	Length (km)	Additional Information
DCC/22/0016	Dalymount to Cabra Cross	Central Area (CA)	1.5	Update in item 6.14 of report
DCC/22/0018	East Wall to North Wall	Central Area (CA)	1.5	Update in item 6.18 of report
DCC/22/0022	Kilmainham to Ballsbridge South City Loop	SC, SE	7	Update in item 6.23 of report
DCC/22/0025	Trinity to Ballsbridge	South East (SE)	2.2	Update in item 6.5 of report