



Tionscadal Éireann  
Project Ireland  
2040



Comhairle Cathrach  
Bhaile Átha Cliath  
Dublin City Council

# Active Travel Network Quarterly Report

To the Lord Mayor and  
Members of Dublin City Council

Report No. 181/2024  
Report of the Assistant Chief Executive and City Engineer

---

## Quarterly Report of the Active Travel Programme Office – September 2024

---

### Table of Contents

1. INTRODUCTION.....	4
2. ACTIVE TRAVEL PROGRAMME OFFICE .....	4
3. KEY ACHEIVEMENTS DURING Q3 2024.....	5
4. COMMUNICATIONS AND COMMUNITY ENGAGEMENT .....	5
5. SCHEMES IN CONSTRUCTION.....	7
5.1 CLONTARF TO CITY CENTRE (C2CC) .....	7
5.2 ROYAL CANAL GREENWAY PHASE 3.....	10
5.3: DODDER GREENWAY – HERBERT PARK TO DONNYBROOK.....	14
5.4: SOUTH GRAND CANAL CYCLE SAFETY IMPROVEMENTS.....	15
5.5: EAST COAST TRAIL NORTH PHASE 1 .....	15
5.6: LIFFEY CYCLE ROUTE.....	16
5.7: KILMAINHAM TO THOMAS STREET (SUIR ROAD).....	17
6: SCHEMES IN DESIGN.....	18
6.1: DODDER GREENWAY.....	18
6.2: SANDYFORD (CLONSKEAGH) TO CITY CENTRE.....	19
6.3: KILMAINHAM TO THOMAS STREET CYCLE ROUTE.....	19
6.4: TRINITY TO BALLSBRIDGE.....	19
6.5: SIR JOHN ROGERSON QUAY PROJECT.....	20
6.6: GRAND CANAL GREENWAY (BLACKHORSE TO PORTOBELLO) .....	20
6.7: SANTRY GREENWAY.....	20
6.8: FINGLAS VILLAGE IMPROVEMENT SCHEME.....	20
6.9: FINGLAS TO KILLESTER.....	20
6.10: FINGLAS AREA ROUNDABOUTS SCHEME.....	21
6.11: NORTH CIRCULAR ROAD .....	21
6.12: RATOATH ROAD & CAPPAGH RD (CABRA TO BLANCHARDSTOWN) .....	21
6.13: DALYMOUNT TO CABRA CROSS.....	22
6.14: COOLOCK TO CLONTARF .....	22
6.15: KILBARRACK RD TO OSCAR TRAYNOR RD (BAYSIDE TO DONAGHMEDE).....	22
6.16: RINGSEND TO COLLEGE GREEN .....	22

**6.17: EAST WALL TO NORTH WALL ROAD ..... 23**

**6.18: KIMMAGE ROAD LOWER TO CLOGHER ROAD ..... 23**

**6.19: S2S CLONTARF BATHS..... 23**

**7     COMPLETE ACTIVE PROJECTS TABLE – ..... 24**

## 1. INTRODUCTION

Dublin City Council is developing a safer, inclusive and sustainable walk-wheel-cycle network. This Active Travel Network will enhance quality of life by 'connecting all the people' through improving access, connectivity and sustainable mobility. The network will also contribute to a citywide reduction of transport-related carbon emissions.

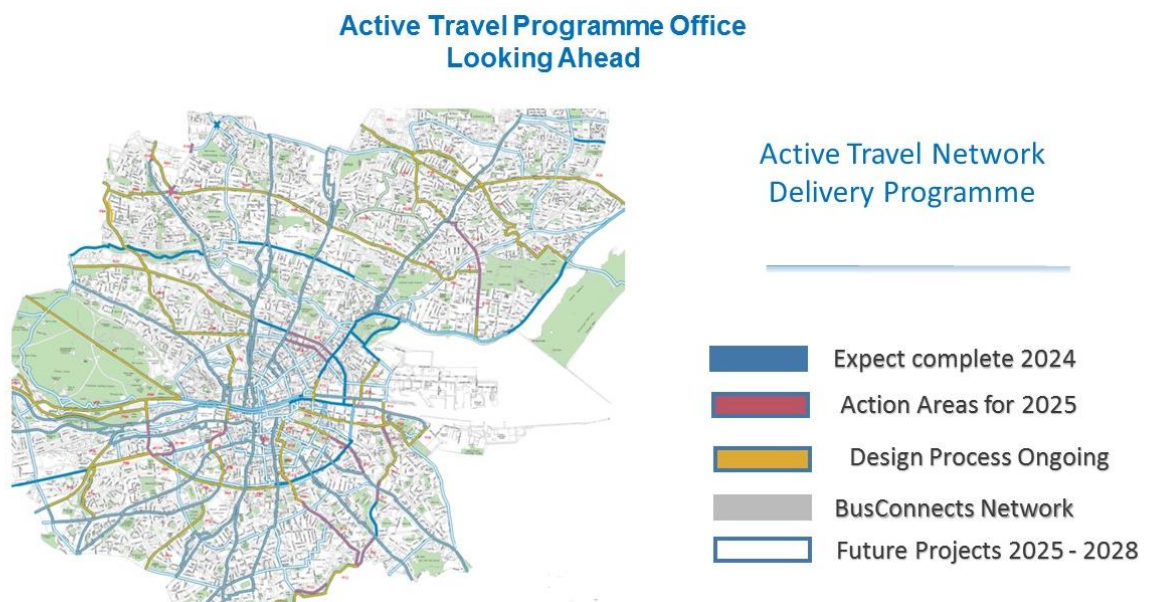
## 2. ACTIVE TRAVEL PROGRAMME OFFICE

The Active Travel Programme Office (AcTPrO) published the Dublin City Active Travel Network in October 2022, a network that will ensure that 95% of us will be within 400m of a connected 314km network. AcTPrO is responsible for the delivery of 214km of this network, through an agreed portfolio of 80 no. projects funded by the National Transport Authority (NTA). The NTA's Busconnects program will deliver an additional 90km.

The Active Travel Programme Office have been allocated funding of €47 million from the National Transport Authority (NTA) for projects in 2024. This is a reduction on the funding which was allocated in 2023. This prompted a review of the delivery programme.

Arising from this, the 2025 to 2028 programme for delivery has been prepared in consultation with the National Transport Authority. It is informed by the likely funding levels expected over the period.

Under this programme, at least ten projects are planned to construction in 2025. The map below highlights the action areas for construction in 2025.



It is planned that design work will have been completed at least 50% of the network by end 2028. Over the same period, the pace of construction will depend on availability of funding with a third of the AcTPrO programme planned to be completed by end 2028.

Further information about the Active Travel Network, including an interactive GIS map of all routes and a complete list of roads and streets where activities are proposed is available on [www.dublincity.ie/activetravel](http://www.dublincity.ie/activetravel)

### 3. KEY ACHIEVEMENTS DURING Q3 2024

AcTPrO continues to refine the overall strategy for delivering a connected core active travel network for the city while also implementing several ongoing projects.

During this quarter:

- On the Royal Canal Greenway Phase 3 the Linear Park between Cross Guns Bridge and Binns Bridge was opened on Friday 19th of July. The first phase of the reopening comprises the entire northern towpath (alongside the railway line), the new pedestrian and Cycle Bridge at lock 3 and the southern towpath between Glengariff Parade and the former Spain's warehouse (to the rear of Saint Ignatius Road).
- On the Clontarf to City Centre scheme, a key milestone for the scheme was reached on the 1st of September with the lifting of the inbound traffic diversion between Edges Corner (Fairview Strand) and the Five Lamps Junction. This diversion, which rerouted inbound traffic via Ballybough and Protland Row, has been a crucial component in facilitating construction along North Strand Road. A significant proportion of the Scheme is practically complete and open to the public
- As part of the East Coast Trail North Phase One project, new traffic signals were activated on the Alfie Byrne and East wall roads on Wednesday 7th of August, 1km of new cycleways delivered as part of the project are now open and in use.

Ongoing projects are discussed further in Sections 5 and 6 of this report.

### 4. COMMUNICATIONS AND COMMUNITY ENGAGEMENT

AcTPrO works to provide clear, concise and accurate information to all project stakeholders including residents, businesses and all transport users on the delivery of the Active Travel Network. This is to ensure transparency and that individual projects are completed in a timely fashion. AcTPrO carries out communications to ensure stakeholders have access to regular updates on the status and progress of projects.

The AcTPrO communications plan uses a number of different channels to maximise delivery of the project messaging.

**This quarter:**

- AcTPrO began work on the first challenge of Dublin City Council's Climate Action Plan 2024 – 2029. The Dublin Let's Move Project, focuses on children's' movement through the city, specifically their ability to move safely whether by walking, cycling wheeling or scooting. The first challenge has targeted an area around St. Laurence O'Toole Resource Centre in the NEIC and AcTPrO's aim is to activate the surrounding area surrounding through the gaze of local children to allow for what we term as 'playful movement' throughout the area.
- Two workshops were conducted with local children and further stakeholder engagement was held with local community representatives to get their initial thoughts on developing safe and playful routes within the area. Next steps is to work with internal stakeholders to devise solutions for the area.
- AcTPrO initiated consultation with Disabled People's Organisation on three of its projects;
  - 1) Kilmainham to Thomas St (Suir Rd Junction)
  - 2) Coolock to Clontarf (Gracefield Rd to Vernon Ave)
  - 3) Point Bridge Upgrade
- AcTPrO continues to grow and update [DCC Active Travel Alerts](#), a free notification service that individuals can subscribe to and receive useful and important updates on current Active Travel projects. There are currently 1,500 approx. subscribers.
- All public consultation material is on the Dublin City Council Consultation Hub: <https://consultation.dublincity.ie/>.

- Project information is also available on the Dublin City Council website: [www.dublincity.ie/activetravel](http://www.dublincity.ie/activetravel). This is used to update project progress, provide further details on specific designs using maps, drawings, artist impressions, etc. and communicate different elements of the project. A section on how to contact the project team is also available. The team continues to operate a process for ensuring project webpages are regularly updated.
- AcTPrO maintains an active social media presence on DCC social media channels using the hashtags #activetravelnetwork and #climateaction, posting on average six times per week. The team has accelerated its use of LinkedIn, in combination with Facebook, X and Instagram.

#### **Internal Communications:**

AcTPrO has worked to enhance its internal communications across DCC through measures including:

- Presentations on AcTPrO's new 2024 to 2028 programme of works were given to Councillors the week of 2<sup>nd</sup> of September.
- Regularly updating our departmental page on the DCC Citidesk platform.

#### **Information Campaigns:**

- AcTPrO launched two Public Information Campaigns on new infrastructure being used on the network; Continuous Footpaths and Amber Flashing Lights.

#### **Community Engagement:**

AcTPrO follows an implementation programme for the network which entails a process of engagements with key stakeholders, including business and interest group representatives, on how certain aspects of the network will be implemented. During these engagements, particular focus is placed on how the proposed interventions on the overall Active Travel Network can be delivered in a manner that enhances the benefits to the city, given that 95% of us will be within 400 meters of a connected network.

During this quarter,

- AcTPrO created and distributed 2 information leaflets;
  - Suir Road Junction – 1565 leaflets distributed
  - Gracefield Road to Vernon Avenue – 1446 leaflets distributed
- There was one non-statutory public consultation and two public information evenings held:
  - Suir Road Junction – 01/08/2024 – 32 attendees
  - Gracefield Road to Vernon Avenue – 26/09/2024

Additional detailed information for projects in construction and in design is included with this report.

---

**Andy G. Walsh**  
Director for the Active Travel Programme

---

**John W. Flanagan**  
Assistant Chief Executive and City Engineer

**30<sup>th</sup> September 2024**

# ADDITIONAL INFORMATION ON ACTIVE PROJECTS

Appended to Report No. 181/2024

## 5. SCHEMES IN CONSTRUCTION

### 5.1 Clontarf to City Centre (C2CC)

The Clontarf to City Centre Project will deliver 8km of walking facilities, 6km of cycling facilities, and 5.4km of bus lanes, from Alfie Byrne Road/Clontarf Road Junction to Amiens Street/Talbot Street Junction and a section of the Tolka Valley Greenway from Annesley Bridge to Alfie Byrne Road/East Wall Road Junction. Construction commenced in Q1 2022 and by the end of Q3 (September) 2024 a significant proportion of the Scheme is practically complete and open to the public. The remaining section through Marino shall be completed by end November 2024.

A major diversion that was put in place in early August 2022 at Fairview Strand and resulted in a private car diversion through Ballybough and Portland Row was removed on 1<sup>st</sup> September 2024 thus restoring inbound traffic from Edge's Corner along Annesley Bridge Road onto North Strand Road to the Five Lamps junction. The section between Marino Mart and Malahide Road is the portion of the Scheme which remains to be completed. The Contractor is progressing at present with a number of dedicated crews.

The latest C2CC Consultative Forum which includes local Councillors and Representatives from local residents and businesses was held on Friday 12<sup>th</sup> July 2024 in Charleville Mall Library. The Project Team remain committed to engaging with the local residents and business owners along the route to discuss issues as they may arise. Further and additional enhanced engagement will occur as the Scheme is completed.

Before and during Q3 of 2024 the site continues to undergo significant transformation and has achieved some major milestones;

- Removal of diversion on 1<sup>st</sup> September 2024 which was installed in August 2022 at Fairview Strand and required inbound general traffic to divert via Ballybough and Portland Row to Five Lamps
- By the end of Q3 (September) 2024 over the 2.7km long scheme there is 2.5km of new inbound cycle-track and footway open and in use (between Clontarf Promenade and Amiens Street / Buckingham Street junction)
- There is also 2.1km of the outbound cycle-track and footway now open and in use;
  - 500m of track opened on Amiens Street on 19<sup>th</sup> July
  - 1.1km of track opened on North Strand Road on 1<sup>st</sup> September
  - 300m of track in vicinity of Howth Road opened on 6<sup>th</sup> September
- The cycle-track appears to be well used and we are receiving good feedback from the local community and commuters alike.
- At locations where the cycle-track is open brand new footpaths have also been contracted adjacent resulting in a pleasant walking experience for pedestrians alike
- From Talbot Street to Buckingham Street Lower, works are almost complete on the CIE retaining wall and railings. The concrete retaining wall has been entirely constructed and the mixed rubble stone wall is also complete. Refurbishment of the original railing is complete with the railing now installed in its permanent location. Surfacing of the carriageway is due to be undertaken at the end of September with new signals on Talbot Street to be undertaken soon after.  
All other footpath, drainage, landscaping, public lights, public domain and watermain works are practically



- completed in this area.
- From Buckingham Street Lower to Five Lamps Junction, works are practically complete on both inbound and outbound sides.
- The summer months saw significant progression of the Works all along the outbound side of North Strand Road between Five Lamps and East Wall Road. With the cycle-track and footways now fully opened the watermains, surface water drainage, kerbs, paving works, and public lighting are also practically complete. The two new bus stops are complete in this area and ready for opening (by NTA).
- From Annesley Bridge to the Howth Road Junction works are largely completed on both sides except for the outbound section between Marino Mart and Malahide Road. At this location watermains, surface water drainage, kerbs, public lighting, footway and cycle-track construction are all progressing. Significant engagement with the owners and businesses continues through this area. The ESB related works are now complete and the Scheme Contractor has a number of dedicated crews working on the area to try close out this last remaining section of the Scheme. On the Malahide Road and Howth Road the two junctions are fully commissioned with signals, footpaths and cycle-track all in operation.
- Works in Fairview Park along by the Tolka River are completed with Public lighting installed along with DCC Traffic ducting. The track is fully open and is a very popular route for pedestrians and cyclists between Annesley Bridge and Alfie Byrne Road / East Wall Road Scheme.
- From Howth Road Junction to Alfie Byrne Road Junction, works on both sides of the road are completed. Significant amendments to the central island in this section was undertaken to accommodate a new bus route into Clontarf DART Station. The island was also extended in front of Westwood Gym to try improve upon traffic related issues in the area.,
- All 14no. bus stops along the Scheme have now been constructed. 12no. stops are in use and the 2no. additional stops on North Strand Road are ready to be opened.
- Ongoing bare root trees and shrubs were planted throughout the relevant planting season in addition to shrubbery and other landscaping measures at their respective locations.

Some of the main work activities carried out during the quarter include road re-construction, road surfacing watermain replacements, road drainage installations, upgrade of traffic signals and junctions, tree pit construction, resetting antique kerbing and new granite kerbing installations, construction works at a number of outbound bus stops, public lighting and cycle track construction works.

The scheme is nearing the point of completion with a number of significant deliverables which are already realised;

- Information campaigns have been rolled out highlighting two significant design elements of the Scheme namely, (i) continuous footways and (ii) left flashing amber arrows at junctions.
- There are approx. 34no. side roads where pedestrians have been provided with a raised table to highlight their priority to cross and to assist with ease of travel.
- By the end of Q3 (September) 2024 over the 2.7km long scheme there is 2.5km of new inbound cycle-track and footway open and in use (between Clontarf Promenade and Amiens Street / Buckingham Street junction)
- There is also 2.1km of the outbound cycle-track and footway now open and in use;
- These sections of track are in regular use.
- Approximately 4km of new traffic signal ducting has been completed to connect all of the new junctions along the route.
- There are now 14no. new bus stops constructed with 12no. in use.
- Wearing course and road markings are 95% complete on the Scheme.
- New junction upgrades installed at Alfie Byrne Road, Howth Road, Malahide Road, Annesley Bridge, Annesley Place, Ossory Road and Five Lamps junctions.
- New pedestrian crossings have been installed at Buckingham Street, Charleville Mall and Waterloo Road.
- Further installations shall take place in the coming weeks.
- New watermain connections are 95% complete with practically all of the 7km of watermain installed and in use and thus improves the security of supply for all those along the route who are connected to these



new pipelines.

- Each of the approx. 250no. new public lighting columns are installed along the route to date providing improved and modern standard lighting to the streets. (Please note the embellishments on the columns through Fairview shall follow once the majority of the heavy civil works are completed).
- Landscaping, tree planting and other greening works continue with final few remaining areas being progressed all along the route.

Further information on the project is accessible on the Dublin City Council webpages. The address is [www.c2cc.ie](http://www.c2cc.ie)



C2CC – North Strand Road Diversion Removed for inbound traffic (1<sup>st</sup> September 2024) and Continuous Footways Information Campaign



C2CC – Footway, paving and raised table pedestrian crossing at Merville Avenue and Amiens Street Outbound (cycle-track opened 19<sup>th</sup> July 24)



C2CC – New Wall & Refurbishment of CIE Railings on Amiens Street Complete

## 5.2 Royal Canal Greenway Phase 3

Royal Canal Greenway Phase 3 will provide 2.1km of cycling facilities and 2.1km of walking facilities along the Royal Canal, from Newcomen Bridge (North Strand Road) to Cross Guns Bridge (Phibsborough Road). The works contractor, was appointed in December 2022. Construction commenced with the Lord Mayor of Dublin Caroline Conroy and Minister for Public Expenditure, National Development Plan Delivery & Reform, Paschal Donohoe TD, helping to 'turn the sod' on 15<sup>th</sup> February 2023. The scheme is scheduled for completion in Q3 2025.

### **Section 1 - Cross Guns Bridge (Phibsborough Road) to Binns Bridge (Dorset Street Lower):**

Works are largely complete on Phibsborough Road at Cross Guns Bridge. The contractor, have some outstanding tactile paving and snagging works to complete over the coming weeks. Once these works are completed, DCC Traffic will commission the new toucan crossing.

The canal towpath along Section 1 was partially opened to the public on Friday 19<sup>th</sup> July. A section of south side towpath between the access point at the rear of Saint Ignatius Road and Dorset Street Lower remains occupied by Jons CE to facilitate road works on Dorset Street Lower / Binns Bridge.





New toucan crossing on Phibsborough  
Road at Cross Guns Bridge



East side of Cross Guns Bridge – contractor completing  
paving works



First users of the Greenway, Cross Guns Bridge, 19th July 2024

The contractor is continuing road crossing works on Dorset Street Lower at Binns Bridge, having commenced works in late May 2024. The road crossing works comprised the installation of fourteen 100mm diameter ducts across the full width of Dorset Street Lower, including the removal of a section of the central median to facilitate temporary traffic management. These works have required the temporary occupation of inbound and outbound traffic lanes. Some of the works were carried out at night to minimise impact on road traffic.

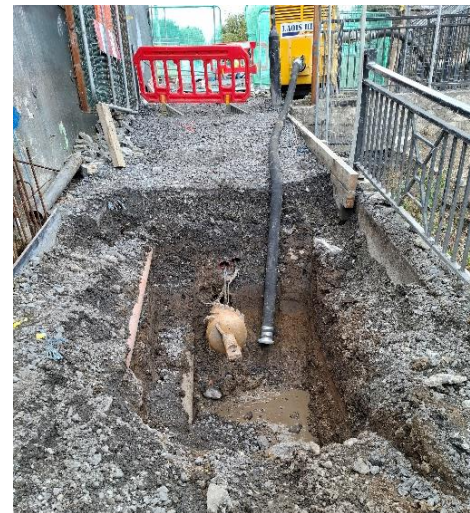
A 5-way high voltage electricity duct system is being drilled underneath Dorset Street Lower. Open-cut trench installation was not a feasible option here due to the presence of a large number of critically important existing underground services and ESB Networks' requirement for their high voltage ducts to be placed sufficiently far beneath all existing services.

Road works at Binns Bridge and works on the remainder of the Section 1 canal towpath are currently scheduled for completion in November 2024.





Dorset Street Lower road works adjacent to Binns Bridge – lane occupations required to facilitate the works



Launch and reception pits for horizontal directional drilling underneath Dorset Street Lower

### **Section 2 - Binns Bridge (Dorset Street Lower) to Bloody Sunday Bridge (Russell Street):**

Binns Bridge east side ramp structure works are ongoing. Piling and ground anchor works were completed in mid-July. A total of 140no. micro-piles and 350no. ground anchors were installed over a 13 week period. Gas Networks Ireland (GNI) removed elements of their gas main infrastructure to facilitate the ramp structure works. Construction commenced on the ramp retaining walls in July and these works are ongoing. Ramp structure works, including masonry cladding, balustrades and landscaping are currently scheduled for completion in June 2025.

Masonry works to the Bloody Sunday Bridge west side ramp structure commenced in mid-August and are due for completion at the end of September. The ramp balustrade is due to be installed in late September. The installation of a new fence along the boundary with Croke Park Industrial Estate is also due to commence in late September and is scheduled to take 4 – 6 weeks to complete.

The installation of a traffic signal controller, additional tactile paving and completion of road and footpath resurfacing works remain outstanding for the Russell Street toucan crossing. These works are scheduled for Q4 2024.





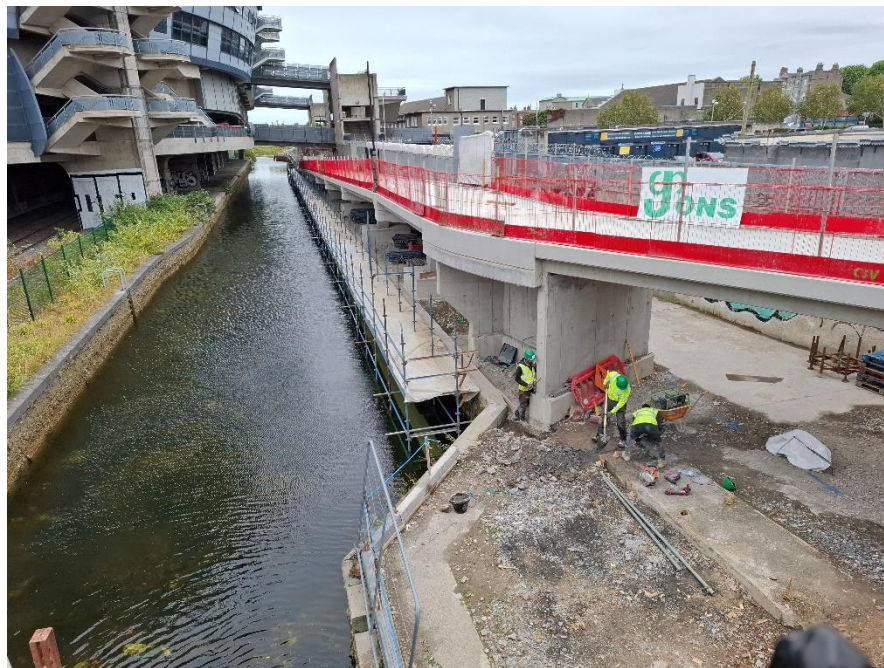
Binns Bridge east side ramp



Bloody Sunday Bridge west side ramp

### **Section 3 - Bloody Sunday Bridge (Russell Street) to Clarke's Bridge (Summerhill Parade):**

Masonry works to the Bloody Sunday Bridge east side ramp structure commenced in mid-September and are due for completion in mid-October. The ramp balustrade is due to be installed in the second half of October. For security reasons, it is proposed to increase the height of the existing GAA boundary fence adjacent to the ramp. These works are scheduled for October / November 2024.



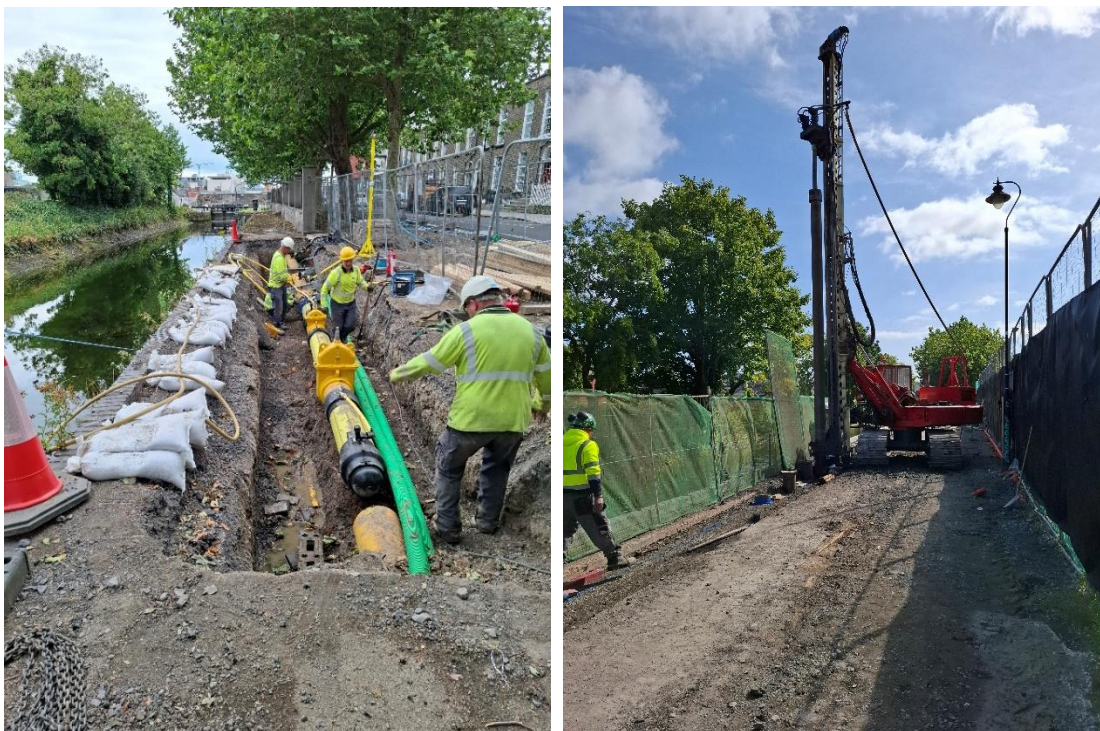
Bloody Sunday Bridge east side ramp

The contractors are scheduled to commence masonry works on the Clarke's Bridge west side ramp structure in late September and road works for the Clarke's Bridge toucan crossing in October.

### **Section 4 - Clarke's Bridge (Summerhill Parade) to Newcomen Bridge (North Strand Road):**

GNI installed a temporary gas main diversion along the canal towpath from Charleville Mall to Clarke's Bridge in early August. Piling works, to stabilise the canal quay wall between Clarke's Bridge and Dunne Street, commenced in late August. In advance of the piling works, the contractors removed approx. 100m of gas main from the towpath to make way for the piles. These piling works are anticipated to take 3 – 3 ½ months to complete, including the construction of a pile cap and a mass concrete gravity wall to span over the existing underground high voltage electricity cables crossing beneath the canal from Dunne Street. Masonry repairs to the quay wall will commence once the above works have been completed and the weather is more favourable for the curing of lime mortar.





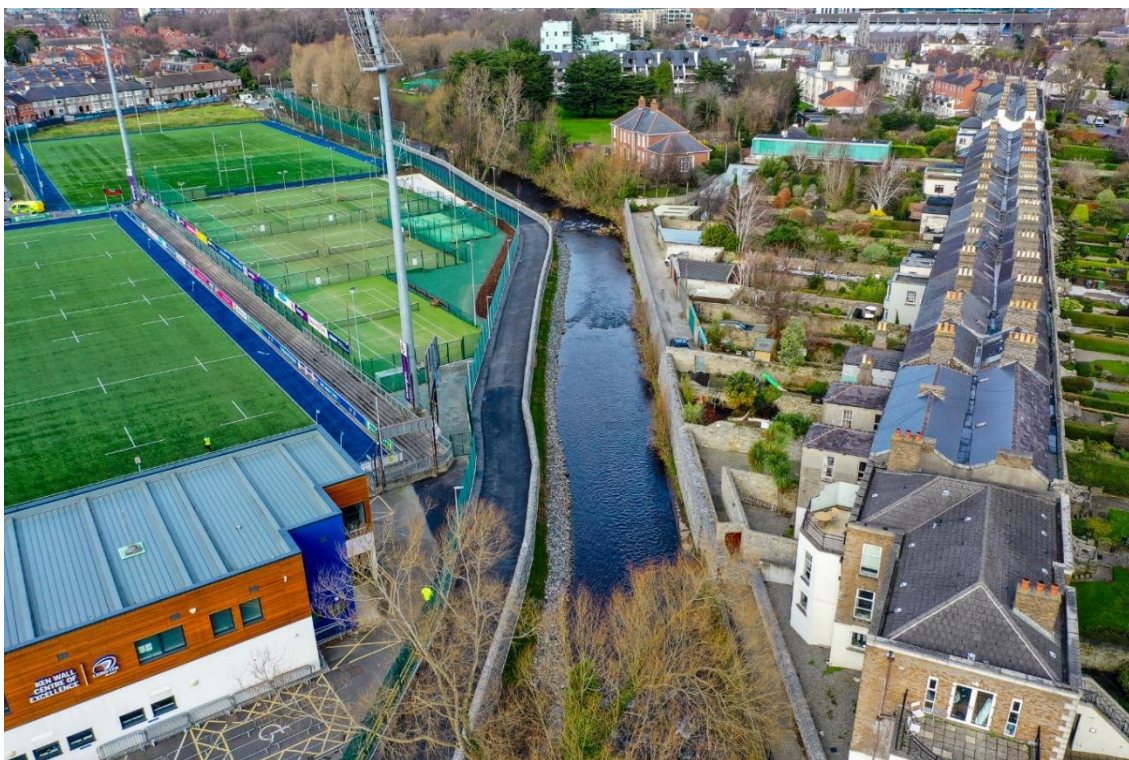
Gas main diversion and piling works at Charleville Mall

Site clearance works will commence along the Charleville Mall north side footpath in late September to facilitate the construction of three sets of steps leading to the canal towpath and to complete all outstanding landscaping works. Works between Clarke's Bridge and Newcomen Bridge are currently scheduled for completion in July 2025.

### 5.3: Dodder Greenway – Herbert Park to Donnybrook

The scheme has delivered 480m of walking and cycling facilities, including flood protection measures, along the Dodder River between the entrance to Herbert Park at Eglington Terrace and Anglesey Bridge. Construction started in Q4 2022 and was successfully commissioned in February 2024. The scheme was officially opened by Councillor Dermot Lacey and Minister Ryan, TD on 8<sup>th</sup> February 2024.

Snagging works are now complete. A few decorative bollards at the entrance to Herbert Park are to be replaced in Q4 2024. Landscape Maintenance by the Main Contractor will continue until February 2025. Also an additional section of fencing is to be installed along Eglington Terrace, with discussions on the details ongoing with the Leinster Branch of the Irish Rugby Football Union.



Dodder Greenway & Flood Defence Herbert Park to Donnybrook – aerial view

## 5.4: South Grand Canal Cycle Safety Improvements

The scheme involved the upgrade of existing signalized junctions, and 'tightening' of wide junctions to improve safety for pedestrians and cyclists. This included the provision of signalized pedestrian crossings. A contractor for the upgrade of the junctions was appointed during Q2 2022. Works commenced in June 2022.

The contract was substantially delayed due to the collapse and liquidation of the main contractor SIAC Construction in May 2023. The remaining works were divided into two packages - the resurfacing of the junctions and the completion of footpath works. These revived scope of works were then re-tendered using existing council Frameworks. The resurfacing was carried out under the Multi-Party Framework Agreement for Bituminous Pavement Contract 2020-2024. The remaining footpath works were completed under the Multi-Party Framework Agreement for Carrying out Roadwork Contracts 2021-25.

Works are now substantially completed with commissioning of Aughavannagh lights and some outstanding cycle signal heads to be completed. These are being coordinated with DCC Traffic Department. Snagging is ongoing.

## 5.5: East Coast Trail North Phase 1

The scheme has provided 1KM of segregated cycling facilities from Alfie Byrne Road and East Wall Rd between the East Point Business Park and St Joseph's Primary school on East Wall Rd.

Works are now complete with exception of the pedestrian crossing on Alfie Byrne Road at the River Tolka will be commissioned Q4 2024.



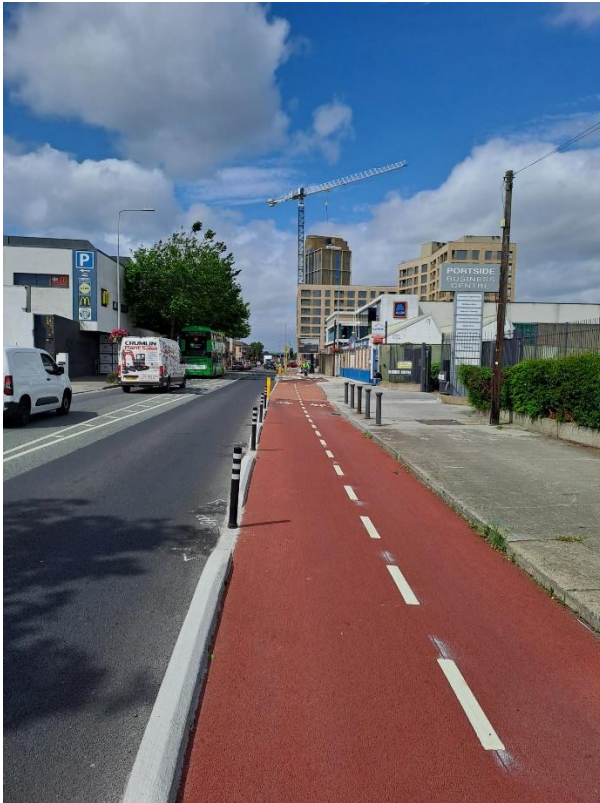


Image of new Cycle Way along East Wall Road



Image of new Cycleway on Alfie Byrne Road

Further information on the project is accessible on the Dublin City Council webpages. The address is [www.dublincity.ie/ectnp1](http://www.dublincity.ie/ectnp1)

## 5.6: Liffey Cycle Route

Work commenced in February 2024 along the south side of the River Liffey from **Georges Quay** to **Aston Quay**, the Contractor is Cairn Construction Ltd. The following works are to be constructed;

- A new two-way cycle track from George's Quay to Burgh Quay located on the river side of the quays
- A new one-way cycle track on Aston Quay located on the river side of the quay
- Closure of left turn slip from Burgh Quay to D'Olier Street
- New traffic islands and associated traffic signals
- Road resurfacing of George's Quay, Burgh Quay and Aston Quay
- Other associated works (ducting, road markings, drainage etc.)

Civil works are now substantially complete on Burgh Quay and Georges Quay. Works will commence on Aston Quay in late September. Most resurfacing works have been completed.



Night time resurfacing works at O'Connell Bridge junction.

## 5.7: Kilmainham to Thomas Street (Suir Road)

This Active Travel Route will deliver 2.6km of protected cyclepaths from Kilmainham Gaol along South Circular Road, Suir Road, Grand Canal View, St James Linear Park, James Walk, Forbes Lane, Marrowbone Lane and linking to Thomas St.

- **Suir Road to Thomas Street** works on the interim measures from the Rialto Bridge junction to Marrowbone Lane along James Walk and Forbes Lane are substantially complete. There have been delays in completing works at Rialto Bridge junction due to required upgrades to traffic light components and the presence of significant services.

For information relating to the design status of the full Kilmainham to Thomas Street Active Travel Scheme along this route, please refer to section 6.5 of this report.

## 6: SCHEMES IN DESIGN

There are 19 active travel schemes in the early planning and design phases.

### 6.1: Dodder Greenway

The scheme will deliver 7.5km of walking and cycling facilities along the Dodder River, from the River Liffey to Orwell Park. A further 9.5km is being delivered by South Dublin County Council.

Dublin City Council will in conjunction with DLRCC and SDCC deliver the route in sections with focus currently on 6 Rapid build schemes as follows

Fitzwilliam Quay to Londonbridge Road  
Beatty's Avenue to Herbert Park  
Donnybrook Road to Clonskeagh Road  
Clonskeagh Bridge to Patrick Doyle Road  
Orwell Road to Dodder Road Lower.  
Milltown Road-Dodder Walk to Dundrum Road.

Non-Statutory Public Consultations have been progressed on four of these routes as follows;

Section	Consultation period	Public Event Date & Location	Public Consultation Report Publishing Dates
Fitzwilliam Quay to Londonbridge Road	29/5/23 - 30/06/23	15/06/23 - Sandymount Community Centre	Q4 2024
Beatty's Avenue to Herbert Park	29/5/23 - 30/06/23	15/06/23 - Sandymount Community Centre	Published July 2024
Donnybrook Road – Clonskeagh Road	02/11/23 - 08/12/23	09/11/23 – Donnybrook Community Centre	Q4 2024
Milltown Road -Dodder Walk to Dundrum Road.	08/02/24-15/03/24	22/02/24 - Milltown Parish Hall, Milltown Road	Q4 2024

Detailed design is complete for the Fitzwilliam Quay to Londonbridge Road section with construction anticipated to commence in Q3 2025 subject to funding.

Beatty's Avenue to Herbert Park is anticipated to proceed to construction in Q4 2024.

Clonskeagh Bridge to Patrick Doyle Road section is being led by DLRCC – Active Travel, who are liaising with the DLRCC Parks Department on the proposal to widen the existing Dodder Trail.

Orwell Road to Dodder Road Lower section. This section is being led by DLRCCC. A non-statutory public consultation has been carried out. DLRCC are currently out to tender to appoint a Consultant to bring the scheme to Detailed Design and Construction.

Donnybrook Road to Clonskeagh Road in design and is scheduled to commence construction in Q2/Q3 2025.

Milltown Road - Dodder Walk to Dundrum Road.in design and is scheduled to commence construction in Q2/Q3 2025.

Quarterly meetings of the Dodder Steering Group, comprising officials and members of DLRCC, SDCC and DCC are due to recommence after the Steering Group is reform after the 2024 Local Elections.

## 6.2: Sandyford (Clonskeagh) to City Centre

The permanent scheme will deliver 3.1km of walking and cycling facilities, along Charlemont St, Ranelagh Road, Ranelagh, Sandford Road and Clonskeagh Road.

A non-statutory public consultation was held in Q1 2023. A total of 675 submissions were received via the online consultation hub by the closing date. Other submissions were made via email and at the Public Information Event on 7th February. A Public Consultation Report has been completed and will be published on the DCC website in Q4 2024.

For the proposed interim scheme, the detailed design has been completed and is currently out on Tender for construction stage. Detailed design is now underway on the permanent scheme on the section from Woodstock Gardens on Sandford Road to the City Council boundary at River Dodder on Clonskeagh Road. Engagement with local interests will continue regarding accommodation for commercial vehicle loading on the scheme.

## 6.3: Kilmainham to Thomas Street Cycle Route

This active travel route will deliver 2.6km of protected cyclepaths and improved pedestrians facilities from Kilmainham Gaol along South Circular Road, Suir Road, Grand Canal View, St James Linear Park, James Walk, Forbes Lane, Marrowbone Lane and with a link to Thomas St. Works on the installation of advanced cycling infrastructure measures from the Rialto Bridge junction to Marrowbone Lane along James Walk and Forbes Lane commenced in August 2023 and are now substantially complete. The concept design for permanent measures for the full route of the Kilmainham to Thomas Street project is on progress.

The upgrade of the Suir Road junction is a priority due to safety concerns. It is proposed be delivered in advance of other sections of the route:

**Suir Road/ Dolphins Road/ Davitt Road/ Slievenamon Road junction.** Public Consultation for the scheme opened on 13th June and closed on 9th August, 2024. Two Public Consultation events took place over the summer, on 20th of June and 1st August, 2024 in Good Counsel, Liffey Gaels, GAA and Camogie Club, Davitt Road, Drimnagh. There was significant interest in the scheme and a large number of submissions were received by the Active Travel Programme Office. All of the submissions are currently being assessed and considered by the design team. Some modifications may be required to the design as a result of this feedback. Given the high volume of submissions, it is expected to be end of 2024 when the Public Consultation Report and the updated design will be published. This junction upgrade is planned to commence Construction in 2025.

A Concept and Options report which identifies the preferred options for permanent measures for all the streets on the route has been submitted to the NTA for approval. Once approval is received, the preliminary design will then be developed. Public Consultation for this design is expected to be Q1 2025.

## 6.4: Trinity to Ballsbridge

The Trinity to Ballsbridge Walking & cycling route is to be delivered in two Phases:

- **Phase 1: Holles St to Lansdowne Road** along Mount Street Lower and Northumberland Road. This phase will deliver 1.6km of segregated cycle tracks using light protective measures and roadmarkings. The Public Consultation Report for this project was published in February 2024. It is expected that project will go to construction tender in the coming month. The installation of the scheme is planned for Q4/2024/ Q1/2025.
- **Phase 2: Dawson St to Holles Street** along Nassau Street, Clare Street and Merrion Square North. Design for this Phase is to commence in Q1 2025.



## **6.5: Sir John Rogerson Quay Project**

The route options selection process and design work commenced for the Sir John Rogerson Quay Project in Q4 2022. The project is being led by the Docklands Office in collaboration with City Architects. The project objectives are to deliver a coherent, high-quality integrated public realm for the city that protects and enhances the existing national monument of the quay wall. The project will co-ordinate key infrastructure including active travel, flood defence, BusConnects link to Ringsend and the existing docking facility for sea vessels along the South Campshire in line with the DCC North Lotts and Grand Canal Dock SDZ.

The project is to be delivered as part of the City Centre to Ringsend BusConnects scheme. AcTPRO support the project to ensure the needs of pedestrians and cyclists are met, as well as coordinating on the integration with the wider Active Travel Network.

## **6.6: Grand Canal Greenway (Blackhorse to Portobello)**

The Grand Canal Greenway (Blackhorse to Portobello) is currently at the Concept Development and Options Selection Phase. A Strategic Assessment Report was completed and submitted to the NTA in 2023.

The Active Travel Design Office (AcTDO) has been appointed to progress the project. The work will build on the previous design completed in 2015 and integrate a number of other major projects along the route such as the refurbishment of Portobello Harbour, BusConnects Core Bus Corridors, Dolphin House redevelopment and the ESB Networks high cable replacement projects.

The updated emerging preferred route is due to be completed and presented to the local community and stakeholders in Q1 2025. The outcome of the option selection process and updated ecological screening reports will determine the statutory approval process and programme for construction.

## **6.7: Santry Greenway**

The project is being led by the Water Framework Directive Office in collaboration with Fingal County Council and DCC Active Travel Programme Office. The route options were reviewed following a series of public consultations events held in 2023, and an emerging preferred route has been identified. Subsequent public consultation events were carried out in September 2024 to allow the local community and other stakeholders to comment on the preferred route.

## **6.8: Finglas Village Improvement Scheme**

The Finglas Village Improvement Scheme was approved by the NTA to go to non-statutory public consultation earlier this year. The public consultation was open for feedback on DCC's Consultation Hub for 5 weeks, from Monday 12<sup>th</sup> February 2024 to Friday, 15<sup>th</sup> March 2024, Information leaflets were distributed to 9,300 residential houses and businesses in the vicinity of the route, drawings were available to view in hard copy format in local libraries for the duration of the consultation period.

A public information event was held on Thursday 29<sup>th</sup> February in Finglas Sports and Fitness Centre, to provide the public with an opportunity to meet the project team and discuss the proposals. Following the public consultation, the design is being modified where appropriate taking into account the feedback from the public and detailed design drawings will then be prepared. Once approval is obtained from the National Transport Authority, a contractor will be procured and the scheme installed. With appropriate permissions received the scheme is expected to go to site in Q2 2025. A project webpage is active; updates on the scheme will be available on the website ([dublincity.ie/activetravel](http://dublincity.ie/activetravel)) as the project progresses.

## **6.9: Finglas to Killester**

The Finglas to Killester Active Travel Scheme proposes the development of improved, or new, Active Travel infrastructure between Finglas and Killester. The route commences on McKee Avenue and Cappagh Road to the north and west of Finglas village centre respectively, and extends to St Anne's Park in the east via Killester village. The route is approximately 10km in length and is primarily along the R103 regional road (incorporating Glasnevin Avenue, Collins Avenue and Collins Avenue Extension). East of Killester village the scheme travels along Howth Road and Furry Park Road before entering St Anne's Park.

The Finglas to Killester Active Travel Scheme is currently at the Concept Development and Options Selection phase; this phase is expected to be completed in Q2 2025. The Preliminary Design commences after the current phase, followed by a Public Consultation period proposed in Q1 2026. The Detailed Design then follows with the scheme expected to go to construction in 2028. The project webpage is currently being set up; updates on the scheme will be available on the website ([dublincity.ie/activetravel](https://dublincity.ie/activetravel)) as the project progresses

## 6.10: Finglas Area Roundabouts Scheme

This project will address the pedestrian and cycle priority at two separate junctions:

- Jamestown Road Roundabout has four arms forming a junction between Jamestown Road (north and south arms), Melville Road (west arm) and Poppintree Park Lane (east arm).
- St. Margaret's Road Junction with McKee Avenue is comprised of a four-arm roundabout. One of these arms is the entrance and exit for a Lidl supermarket.

Preliminary design is being finalised for both St Margaret's Road/McKee Road roundabout and the Jamestown Road roundabout. The project will be phased with the pedestrian crossings on St Margaret's Road/McKee Road roundabouts to be progressed in advance of the Jamestown Road Roundabouts. Construction is to commence in 2025 subject to NTA approval and funding availability.

## 6.11: North Circular Road

The North Circular Road Project aims to provide segregated cycling facilities along a 5.5km route from Infirmary Road at the junction with Conyngham Road and Parkgate Street to Seville Place at the junction with Guild Street. The project will be delivered in five schemes and the Active Travel team are currently progressing with the **Dorset St Lwr. to Amiens St** section.

This Active Travel Scheme will deliver 1.1km of protected cycle paths, improved pedestrian facilities and cycling friendly upgrade to the signalised junctions at Belvedere Road, Fitzgibbon Street and Summerhill. Public Consultation on an interim scheme design was undertaken in 2023. A significant revision of this previous design following review of public consultation submissions and in line with new NTA Cycle Design Guidance has been carried out. This revised design was submitted to the NTA and approved in Summer 2024. A second round of Public Consultation is now to be undertaken on the new design. A report on the first Public Consultation will be published along with the revised designs in Q4 2024.

## 6.12: Ratoath Road & Cappagh Rd (Cabra to Blanchardstown)

This Active Travel Route will deliver 4.1km of protected cycle paths and improved pedestrian facilities along Ratoath Road and Cappagh Road. The scheme commences at the junction of Navan Road/ Cabra Road and finishes at the junction of Cappagh Road / Avila Park near the border with Fingal County Council. The preliminary design has been updated following review of public consultation submissions and in line with NTA Cycle Design Guidance. This updated design along with updated cost estimates were submitted to NTA over Summer 2024. The design is currently being finalised following feedback. The Public Consultation Report will be published when preliminary design review is concluded.

A feasibility and options assessment for a separate Ratoath Road (1km) project from Westwood to Ratoath Avenue has commenced. The planning and design for this project will proceed in parallel with the above 4.1km project to develop a concept designs for a full road upgrade including walking and cycling facilities.

### 6.13: Dalymount to Cabra Cross

The Dalymount to Cabra Cross scheme will provide 1.5k of improved walking & cycling facilities from Cabra-Road; from Cabra Cross (junction with the Navan Road) to Dalymount (junction with the North Circular Road). The scheme and concept development and options selection commenced in August 2024.

### 6.14: Coolock to Clontarf

The Coolock to Clontarf walking and cycling route is 5.1km in length and is proposed to be delivered in three Phases:

- **Phase 1- Gracefield Rd to Vernon Avenue** along Gracefield Road, Brookwood Avenue, Sybil Hill Road and Vernon Ave. (2.6km). The preliminary design has been updated following review of public consultation submissions and in line with NTA Cycle Design Guidance. This was submitted to NTA over Summer 2024 and approval received. The consultation process has now concluded and members of the community are were invited to an information event in the in Artane Coolock Family Resource Centre on Thursday 26th of September from 5.30 to 7.30pm. Additionally, an information leaflet will be distributed to all the residents who live along the route, to inform them of the Public Information Event and key design changes. The updated design along with the Public Consultation Report and information leaflet is now published on the active travel webpage.
- **Phase 2- Vernon Ave to Clontarf Rd** along Vernon Avenue terminating at the junction with Clontarf Road. Engagement with stakeholders in the community is proposed for Q4 2024 to assist in the development of concept designs.
- **Phase 3- Artane Roundabout to Clonshaugh Road** from Artane Roundabout, along Ardlea Road, Kincora Rd, Oscar Traynnor Rd, Clonshaugh Rd, Concept design is programmed to commence in Q1 2027.

### 6.15: Kilbarrack Rd to Oscar Traynor Rd (Bayside to Donaghmede)

This Active Travel Route will deliver 5.14km of light segregation protected cycle paths and improved pedestrian facilities along Kilbarrack Rd, Tonleeg Road and Oscar Traynor Rd from the junction with James Larkin Road to the junction with Bunnratty Road. The preliminary design has been updated following review of public consultation submissions and in line with NTA Cycle Design Guidance. This design along with updated cost estimates were submitted to the NTA over Summer 2024. The design is now being finalised following feedback. The Public Consultation Report will be published when preliminary design updating is concluded.

### 6.16: Ringsend to College Green

This 2.8km active travel scheme will provide a segregated cycle route and improved walking facilities from Ringsend along Pearse Street to College Green. The scheme and concept development and options selection commenced in August 2024.



## **6.17: East Wall to North Wall Road**

The North Wall Quay to East Wall Road scheme will provide 1Km of improved walking & cycling facilities from North Wall along New Wapping Street and East Road, linking to the active travel scheme recently constructed at East Wall Road. Concept development and options selection commenced in August 2024.

## **6.18: Kimmage Road Lower to Clogher Road**

This active travel route will provide 1.9km of improved walking & cycling facilities from Kimmage Road Lower to Clogher Road. Engagement with stakeholders in the community is proposed for Q4 2024 to assist in the development of concept design.

## **6.19: S2S Clontarf Baths**

The Active Travel Programme Office, with the support of the Planning and Development Department issued the Heads of Terms to enable the transfer of lands required for the development. Once an agreement is reached with the landowner, AcTPrO will proceed to complete the detailed design with a view to proceeding to construction when funding becomes available.



## 7 Complete Active Projects Table –

NTA Code	Project Name	Committee Area (s)	Length (km)	Additional Information
DCC/12/0007	Royal Canal Greenway - Phase 3	Central Area (CA)	2.1	Update in item 5.2 of report
DCC/12/0008	Liffey Interim Scheme ( Georges Quay to Crampton Quay)	South East (SE)	0.8	Update in item 5.6 of report
DCC/12/0016	Finglas Village Improvement Scheme	North West (NW)	0.2	Update in item 6.8 of report
DCC/12/0024	Grand Canal (Blackhorse to Portobello)	SC, SE	4.5	Update in item 6.6 of report
DCC/12/0033	Clontarf to City Centre	CA, NCA	3	Update in item 5.1 of report
DCC/12/0035	Dodder River Greenway	South East (SE)	5.2	Update in item 6.1 of report
DCC/14/0001	Sandymount (Clonskeagh) to Charlemont Street	South East (SE)	3.2	Update in item 6.2 of report
DCC/18/0001	Dodder Greenway - Herbert Park to Donnybrook Road	South East (SE)	0.5	Update in item 5.3 of report
DCC/18/0009	South Grand Canal Cycle Safety Improvements	South East (SE)	2.2	Update in item 5.4 of report
DCC/19/0002	East Coast Trail - Alfie Byrne Road to Sheriff Street	Central Area (CA)	1.5	Update in item 5.5 of report
DCC/19/0006	Finglas Area Roundabouts Scheme	North West (NW)	0.1	Update in item 6.10 of report
DCC/21/0001	Finglas to Killester	NC, NW	9.5	Update in item 6.9 of report
DCC/21/0006	Chapelizod Road to Chapelizod Bypass	South Central (SC)	4.8	Update in item 6.8 of report
DCC/21/0007	Kilmainham to Thomas Street	South Central (SC)	2.6	Update in item 5.7 & 6.3 of report
DCC/21/0009	Coolock to Clontarf	North Central (NC)	2.5	Update in item 6.14 of report
DCC/21/0011	Santry River Greenway	North Central (NC)	7	Update in item 6.7 of report
DCC/21/0017	Ringsend to College Green	South East (SE)	3.6	Update in item 6.16 of report
DCC/21/0020	North Circular Road	Central Area (CA)	3.3	Update in item 6.11 of report
DCC/21/0028	Cabra to Blanchardstown	CA, NW	5.1	Update in item 6.12 of report
DCC/21/0031	Kilbarrack Rd to Oscar Traynor Rd (Bayside to Northside)	North Central (NC)	6.8	Update in item 6.15 of report
DCC/22/0003	Sir John Rogersons Quay	South East (SE)	0.5	Update in item 6.5 of report
DCC/22/0004	Clontarf Baths Active Travel Elements	North Central (NC)	0.1	Update in item 6.19 of report
DCC/22/0016	Dalymount to Cabra Cross	Central Area (CA)	1.5	Update in item 6.13 of report





NTA Code	Project Name	Committee Area (s)	Length (km)	Additional Information
DCC/22/0018	East Wall to North Wall	Central Area (CA)	1.5	Update in item 6.17 of report
DCC/22/0025	Trinity to Ballsbridge	South East (SE)	2.2	Update in item 6.4 of report