



Tionscadal Éireann
Project Ireland
2040



Comhairle Cathrach
Bhaile Átha Cliath
Dublin City Council

Active Travel Network Quarterly Report

To the Lord Mayor and
Members of Dublin City Council

Report No. 97/2025.
Report of the Assistant Chief Executive and City Engineer

Quarterly Report of the Active Travel Programme Office – March 2025

Table of Contents

1. INTRODUCTION	4
2. ACTIVE TRAVEL PROGRAMME OFFICE	4
3. KEY ACHIEVEMENTS DURING Q1 2025.....	5
4. COMMUNICATIONS AND COMMUNITY ENGAGEMENT	5
ANNEX – DETAILED PROJECT ACTIVITIES.....	7
5. SCHEMES IN CONSTRUCTION	7
5.1 CLONTARF TO CITY CENTRE (C2CC)	7
5.2 ROYAL CANAL GREENWAY PHASE 3 (RCGP3)	7
5.3 DODDER GREENWAY – HERBERT PARK TO DONNYBROOK.....	9
5.4 LIFFEY CYCLE ROUTE	10
5.5 KILMAINHAM TO THOMAS STREET (SUIR ROAD TO THOMAS STREET).....	10
5.6 SANDYFORD (CLONSKEAGH) TO CITY CENTRE – RANELAGH VILLAGE INTERIM SCHEME PHASE 1	11
5.7 DODDER GREENWAY - BEATTY'S AVENUE TO HERBERT PARK	11
6: SCHEMES IN DESIGN	11
6.1. ROYAL CANAL PHASE 4	11
6.2. DODDER GREENWAY	11
6.3. SANDYFORD (CLONSKEAGH) TO CITY CENTRE	13
6.4. KILMAINHAM TO THOMAS STREET CYCLE ROUTE	13
6.5. TRINITY TO BALLSBRIDGE	13
6.6. SIR JOHN ROGERSON QUAY PROJECT	14
6.7. GRAND CANAL GREENWAY (BLACKHORSE TO PORTOBELLO)	14
6.8. SANTRY GREENWAY	14
6.9. FINGLAS VILLAGE IMPROVEMENT SCHEME	14
6.10. FINGLAS TO KILLESTER.....	14
6.11. FINGLAS AREA ROUNDABOUTS SCHEME	15
6.12. NORTH CIRCULAR ROAD.....	15
6.13. RATOATH ROAD & CAPPAGH RD (CABRA TO BLANCHARDSTOWN)	15

6.14. DALYMOUNT TO CABRA CROSS.....	16
6.15. COOLOCK TO CLONTARF.....	16
6.16. KILBARRACK RD TO OSCAR TRAYNOR RD (BAYSIDE TO DONAGHMEDE)	17
6.17. RINGSEND TO CITY CENTRE	17
6.18. EAST WALL TO NORTH WALL ROAD.....	17
6.19. KIMMAGE ROAD LOWER TO CLOHER ROAD.....	18
6.20. S2S CLONTARF BATHS.....	18
6.21. CHAPELIZOD ROAD TO CHAPELIZOD BYPASS (CONYNGHAM ROAD TO CHAPELIZOD VILLAGE).....	18
6.22. CHESTERFIELD AVENUE WALKING & CYCLING SCHEME	19
6.23. SOUTH CITY LOOP PHASE 1 – SOUTH CIRCULAR ROAD	19
COMPLETE ACTIVE PROJECTS TABLE –	20

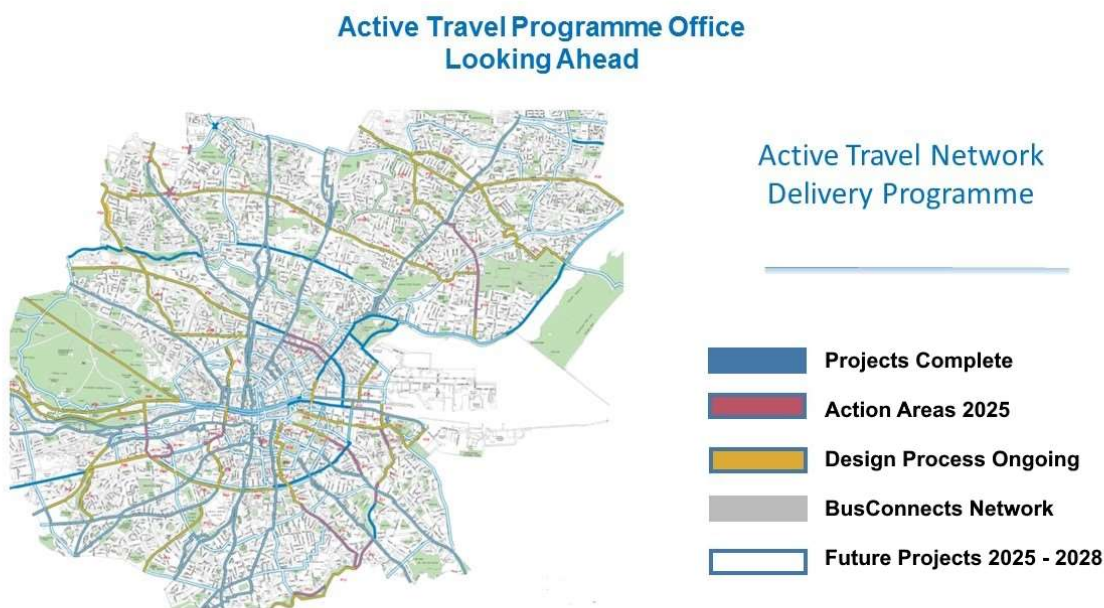
1. INTRODUCTION

Dublin City Council is developing a safer, inclusive and sustainable walk-wheel-cycle network. This Active Travel Network will enhance quality of life by 'connecting all the people' through improving access, connectivity and sustainable mobility. The network will also contribute to a citywide reduction of transport-related carbon emissions.

2. ACTIVE TRAVEL PROGRAMME OFFICE

The Active Travel Programme Office (AcTPrO) published the Dublin City Active Travel Network in October 2022, a network that will ensure that 95% of us will be within 400m of a connected 314km network. AcTPrO is responsible for the delivery of 214km of this network, through an agreed portfolio of 80 no. projects funded by the National Transport Authority (NTA). The NTA's BusConnects program will deliver an additional 90km.

A delivery programme for the 2025 to 2028 programme has been prepared in consultation with the National Transport Authority. Under this programme, at least eleven projects are planned to be either at construction or at construction tender in 2025. The map below highlights the action areas for construction in 2025.



It is planned that design work will have been completed on at least 50% of the network by end 2028. Over the same period, the pace of construction will depend on availability of funding, with a third of the AcTPrO programme planned to be completed by end 2028.

Further information about the Active Travel Network, including an interactive GIS map of all routes and a complete list of roads and streets where activities are proposed is available on www.dublincity.ie/activetravel

3. KEY ACHIEVEMENTS DURING Q1 2025

AcTPrO continues to refine the overall strategy for delivering a connected core active travel network for the city while also implementing several ongoing projects.

During this quarter:

- The Liffey Cycle Route (Georges Quay to Aston Quay) section was completed and officially opened by the Lord Mayor on the 27th of February.
- Two projects commenced construction within the quarter, Dodder Greenway - Beatty's Avenue to Herbert Park in January and the Ranelagh Village Interim Scheme Phase 1 (part of the Sandyford Clonskeagh to Charlemont Street project) in February.
- On 23rd March a section of Royal Canal Greenway Phase 3 a significant milestone on the scheme was achieved with the opening to the public of the section between Dorset Street and Phibsborough. This included the signals controlled pedestrian and cyclist crossing across Dorset Street.
- As part of the communications, engagement and promotion of active travel, the 'Be Sound' campaign, which highlighted people's obligations to be safe and considerate when using the city's streets and greenways, concluded in February.

Ongoing projects are discussed further in Sections 5 and 6 of this report.

4. COMMUNICATIONS AND COMMUNITY ENGAGEMENT

AcTPrO works to provide clear, concise and accurate information to all project stakeholders including residents, businesses and all transport users on the delivery of the Active Travel Network. This is to ensure transparency and that individual projects are completed in a timely fashion. AcTPrO carries out communications to ensure stakeholders have access to regular updates on the status and progress of projects.

The AcTPrO communications plan uses a number of different channels to maximise delivery of the project messaging.

This quarter:

- The 'Be Sound' campaign concluded in February. Our social media campaign was viewed 6.9 million times across Instagram and Tiktok, while our radio campaign ran over five Dublin radios stations with a combined audience of 5.1 million. An outdoor campaign also ran across Dublin City Council access arrangements for Metropoles and Metropanels throughout the city. The campaign highlighted people's obligations to be safe and considerate when using the city's streets and greenways.
- AcTPrO's work on the first challenge of Dublin City Council's Climate Action Plan 2024 – 2029 continues. The Dublin Let's Move Project focuses on children's' movement through the city, specifically their ability to move safely whether by walking, cycling wheeling or scooting. Currently the team are designing a co-design workshop with the community, which will be held in April.
- AcTPrO engaged with Disabled People's Organisation on the following projects;
 - Dodder Greenway (Beatty's Ave-Herbert Park)
 - Dodder Greenway (Fitzwilliam Qy to Londonbridge Rd)

- Cabra to Blanchardstown
 - RCG -P3- Redesign of Centre Kerb
 - Grand Canal Greenway - Portobello to Blackhorse
 - Continuous Footpaths Scheme
 - Sandford Clonskeagh to City Centre –Interim Scheme
 - Non Standard Bus Stop Campaign
 - Landmarks Project
 - Kimmage Rd West-Whitehall Jcnt
 - Coolock to Clontarf –Vernon Ave to Clontarf Rd
 - Ringsend to College Green
 - Kimmage Rd to Clogher Rd
 - Kilmainham to Ballsbridge (South City Loop)
- AcTPrO continues to grow and updates are provided on [DCC Active Travel Alerts](#), a free notification service that individuals can subscribe to and receive useful and important updates on current Active Travel projects. There are currently 1,650 approx. subscribers. We issued thirteen alerts in this quarter.
 - Project information is available on the Dublin City Council website: www.dublincity.ie/activetravel. A new information architecture has been applied to the Active Travel area of dublincity.ie. Projects have now been broken into specific council areas; this is now accompanied by GIS map. A new template for how our projects are showcased is underway and it is hoped that this will be implemented in the coming weeks. All this combine will allow users easier access to information on projects within their area.
 - In addition, AcTPrO maintains an active social media presence on DCC social media channels (LinkedIn, Facebook, X and Instagram) using the hashtags #activetravelnetwork and #climateaction, posting on average 3 times per week. This number is increased when there is a public consultation or event.

Community Engagement:

AcTPrO follows an implementation programme for the network which entails a process of engagements with key stakeholders, including business and interest group representatives, on how certain aspects of the network will be implemented. During these engagements, particular focus is placed on how the proposed interventions on the overall Active Travel Network can be delivered in a manner that enhances the benefits to the city, given that 95% of us will be within 400 meters of a connected network.

During this quarter;

- AcTPrO held one early engagement event on East Wall to North Wall Quay project. This involved a workshop with local businesses and community groups on potential routes for the area.
- A press release was issued to publicise the opening of the George's Quay to Aston Quay phase of the Liffey Cycle Route in February.

Christopher K. Manzira
A/Director for the Active Travel Programme

John W. Flanagan
Assistant Chief Executive and City Engineer

ANNEX – DETAILED PROJECT ACTIVITIES

5. SCHEMES IN CONSTRUCTION

5.1 Clontarf to City Centre (C2CC)

The C2CC Consultative Forum which includes Local Councillors and Representatives from local residents held its final forum meeting in the Mansion House, by kind permission of the Lord Mayor on Thursday the 27th of March.

The Scheme Contractor continues to have a presence on site closing out snag items. Snagging works at localised areas shall continue along the full extent of the Scheme until summer 2025.

A Road Safety Audit was undertaken at the end of January 2025 and the actions raised in the Audit are being addressed in parallel to the snagging works.

Outstanding footway works on Amiens Street at the Buckingham Street junction are planned to be completed in May 2025.

With substantial completion achieved in October 2024 the Clontarf to City Centre Scheme has delivered 8km of walking facilities, 6km of cycling facilities, and 5.4km of bus lanes, from Alfie Byrne Road/Clontarf Road Junction to Amiens Street/Talbot Street Junction and a section of the Tolka Valley Greenway from Annesley Bridge to Alfie Byrne Road/East Wall Road Junction.

Further information on the project is accessible on the Dublin City Council webpages. The address is www.c2cc.ie

5.2 Royal Canal Greenway Phase 3 (RCGP3)

Royal Canal Greenway Phase 3 will provide 2.1km of cycling facilities and 2.1km of walking facilities along the Royal Canal, from Newcomen Bridge (North Strand Road) to Cross Guns Bridge (Phibsborough Road). The works contractor, Jons Civil Engineering Ltd, was appointed in December 2022. Construction commenced with the Lord Mayor of Dublin, Caroline Conroy and Minister for Public Expenditure, National Development Plan Delivery & Reform, Paschal Donohoe TD, helping to 'turn the sod' on 15th February 2023. The scheme is scheduled for completion in Q3 2025.

The scheme is divided into four sections:

Section 1 - Cross Guns Bridge (Phibsborough Road) to Binns Bridge (Dorset Street Lower):

Works at Cross Guns Bridge (Phibsborough Road / Prospect Road / Whitworth Road junction) are substantially complete. Outstanding snags and items identified in the Stage 3 Road Safety Audit are expected to be completed in April 2025. Temporary traffic management and evening/night works will be required to facilitate these works.

Ducting works and associated chambers, road resurfacing, kerbing and footpath works on Dorset Street Lower were substantially completed on 5th March. The last of the ESB high voltage ducting and associated joint bays (between Lock 3 and Portland Place Park) were tested, approved and signed off by ESB on 20th February. The south side canal towpath between Dorset Street Lower (Binns Bridge) and the access point from Saint Ignatius Road is due to be opened to the public on Sunday 23rd March, in conjunction with the activation of the new signals controlled pedestrians and cyclists crossing at Binns Bridge. Snagging works will be carried out at the Dorset Street Lower / Whitworth Road / Drumcondra Road Lower junction in April 2025. Temporary traffic management and evening/night works will be required to facilitate these works.

Section 2 - Binns Bridge (Dorset Street Lower) to Bloody Sunday Bridge (Russell Street):

The Binns Bridge east side ramp structure's reinforced concrete works were completed in early March. All service duct installations in the ramp were completed in February. Work is ongoing on the stone façade along the canal side of the ramp structure and paving has commenced underneath Binns Bridge at Lock 2. Outstanding sheet pile and ground anchor works east of the Binns Bridge ramp is scheduled for April 2025.

All parapet railings on the Bloody Sunday Bridge west side ramp structure were installed by the end of January. The contractor also carried out paving and reinforced concrete works to the ramp underpass area on the east side of Bloody Sunday Bridge in January and February.

Works on Russell Street at Bloody Sunday Bridge resumed on 10th March and an off-peak stop/go system is in place. The works comprise kerb realignment, additional tactile paving, road resurfacing works and footpath surfacing works. These works are scheduled to be completed in April 2025, with the signal controlled pedestrian and cyclist crossing to be activated closer to the completion of the greenway.

Section 3 - Bloody Sunday Bridge (Russell Street) to Clarke's Bridge (Summerhill Parade):

The contractor completed the installation of the parapet railings on the Bloody Sunday Bridge east side ramp structure in mid-February. Additional security fencing along the Croke Park boundary was installed in February and the remainder is due for installation in early April 2025.

All reinforced concrete works for the Clarke's Bridge west side ramp structure were completed in mid-March. The contractor subsequently resumed work on the construction of a retaining wall to the rear of Richmond Crescent that forms part of this ramp.

Roadworks on Summerhill Parade at Clarke's Bridge were completed on 27th February. The new signalised pedestrians and cyclists crossing was commissioned in mid-February and the old pedestrian crossing at the crest of the bridge was decommissioned and removed.

Section 4 - Clarke's Bridge (Summerhill Parade) to Newcomen Bridge (North Strand Road):

Gas main diversions between Clarke's Bridge and Charleville Mall were completed just before Christmas 2024. ESB and communications ducts were installed along the Clarke's Bridge east side ramp in January and February. Reinforced concrete works to the Clarke's Bridge east side ramp are ongoing and due for completion in mid-March.

Refurbishment works to the Charleville Mall canal quay wall were successfully completed on 12th March. The construction of three stepped access points from footpath level to towpath level commenced in March and are ongoing.

Further information on the project is available on the Dublin City Council website at www.dublincity.ie/rcgp3



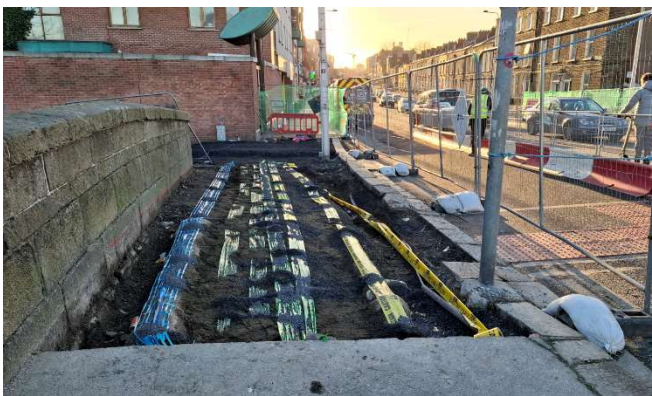
RCGP3 – Towpath to the west of Binns Bridge prepared for surfacing



RCGP3 – Binns Bridge toucan crossing prepared for activation



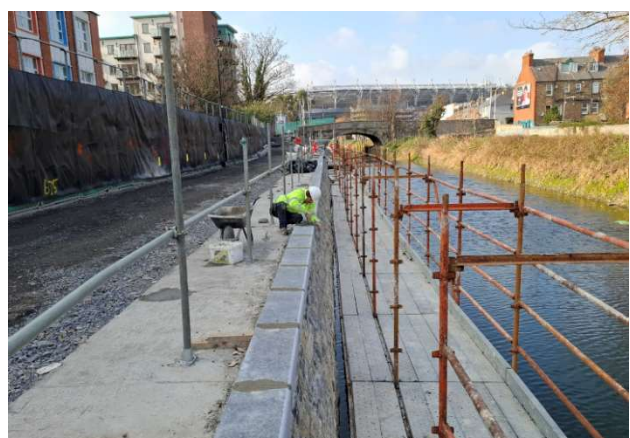
RCGP3 – Binns Bridge east ramp structure, stairs and façade works RCGP3 – Bloody Sunday Bridge east ramp railings and security fence



RCGP3 – Clarke's Bridge: utilities in footpath



RCGP3 – Clarke's Bridge toucan crossing



RCGP3 – Charleville Mall canal quay wall repair works

5.3 Dodder Greenway – Herbert Park to Donnybrook

Fencing to be installed along Eglinton Terrace is the one outstanding item. During the quarter AcTPRo has been working to finalise details with the Leinster Branch of the Irish Rugby Football Union. Construction is scheduled this year.

Construction started in Q4 2022 and was successfully commissioned in February 2024. The scheme was officially opened by Councillor Dermot Lacey and Minister Ryan, TD on 8th February 2024. Snagging works are now complete. Landscape Maintenance by the Main Contractor will continue until February 2025.

5.4 Liffey Cycle Route

The project was officially opened by the Lord Mayor on the 27th of February.

The project entailed the following:

- A new two-way cycle track from George's Quay to Burgh Quay located on the river side of the quays
- A new one-way cycle track on Aston Quay located on the river side of the quay
- Closure of left turn slip from Burgh Quay to D'Olier Street
- New traffic islands and associated traffic signals
- Road resurfacing of George's Quay, Burgh Quay and Aston Quay
- Other associated works (ducting, road markings, drainage etc.)



Liffey Cycle Route - Georges Quay to Aston Quay – Official Opening

5.5 Kilmainham to Thomas Street (Suir Road to Thomas Street)

Works on the interim measures from the Rialto Bridge junction to Marrowbone Lane along James Walk and Forbes Lane are substantially complete. There have been delays in applying coloured surfacing on the completed project which is expected to be carried out in Q2 2025.

This Active Travel Route will deliver 2.6km of protected cyclepaths from Kilmainham Gaol along South Circular Road, Suir Road, Grand Canal View, St James Linear Park, James Walk, Forbes Lane, Marrowbone Lane and linking to Thomas St.

For information relating to the design status of the full Kilmainham to Thomas Street Active Travel Scheme along this route, please refer to section 6.4 of this report

5.6 Sandyford (Clonskeagh) to City Centre – Ranelagh Village Interim Scheme Phase 1

The Interim Active Travel Route along Ranelagh Road between Ranelagh Luas Bridge and Beechwood Avenue Lower commenced construction on the 10th of February 2025. The interim scheme aims to provide 0.65km of one-way protected cycleway on Ranelagh road. The target for substantial completion is April 2025.

5.7 Dodder Greenway - Beatty's Avenue to Herbert Park

This project began construction on 13th January 2025. The focus of the works to date has been provision of underground cabling and junction boxes to the two proposed signals controlled pedestrians and cyclists crossings on Merrion Rd and Anglesea Rd as well as kerb and footpath construction alongside and around these crossings. The works are expected to be completed in Q3 2025.

6: SCHEMES IN DESIGN

There are 21 active travel schemes in the early planning and design phases.

6.1. Royal Canal Phase 4

Royal Canal Phase 4B

The An Bord Pleanála decision on the Environment Impact Assessment Screening is still pending, therefore this project remains on hold.

The project will deliver 4.3km of walking and cycling facilities along the Royal Canal, from Cross Guns Bridge (Phibsborough Road) to the city boundary at Ashtown.

Royal Canal Phase 4C

Phase 4C is the railway underpass on the main Greenway route; a ground investigation (GI) contract is ongoing and will guide the design. Progress has been hindered by the unavailability of the Ground Investigation Contractor.

6.2. Dodder Greenway

Quarterly meetings of the Dodder Steering Group, have recommenced following the nomination of Elected Representatives. This group comprises of officials and members of DLRCC, SDCC and DCC, the latest meeting was held on the 26th of February 2025.

Dublin City Council will in conjunction with DLRCC and SDCC deliver the route in sections with focus currently on 6 schemes as follows

Fitzwilliam Quay to Londonbridge Road

Donnybrook Road to Clonskeagh Road
Clonskeagh Bridge to Patrick Doyle Road
Orwell Road to Dodder Road Lower.
Milltown Road-Dodder Walk to Dundrum Road
Dodder Walk to Orwell Road

Non-Statutory Public Consultations have been progressed on four of these routes as follows;

Section	Consultation period	Public Event Date & Location	Public Consultation Report Publishing Dates
Fitzwilliam Quay to Londonbridge Road	29/5/23 - 30/06/23	15/06/23 - Sandymount Community Centre	Q4 2024
Beatty's Avenue to Herbert Park	29/5/23 - 30/06/23	15/06/23 - Sandymount Community Centre	Q2 2024
Donnybrook Road – Clonskeagh Road	02/11/23 - 08/12/23	09/11/23 – Donnybrook Community Centre	Scheduled Q2 2025
Milltown Road -Dodder Walk to Dundrum Road.	08/02/24-15/03/24	22/02/24 - Milltown Parish Hall, Milltown Road	Now scheduled Q2 2025

Detailed design is complete for the **Fitzwilliam Quay to Londonbridge Road** section with construction anticipated to commence in Q3 2025, procurement of a contractor for the works is due to commence in Q2 2025.

Clonskeagh Bridge to Patrick Doyle Road section is being led by DLRCC – Active Travel, have been liaising with the DLRCC Parks Department on the proposal to widen the existing Dodder Trail.

Orwell Road to Dodder Road Lower section. This section is being led by DLRCCC. A non-statutory public consultation has been carried out. DLRCC are currently out to tender to appoint a Consultant to bring the scheme to Detailed Design and Construction.

Donnybrook Road to Clonskeagh Road is currently in design, extensive engagement with DLRCC, NTA and DCC Traffic regarding Junction designs at Clonskeagh Road and Donnybrook Road is ongoing. Further consultation with NTA Bus Connects Teams regarding the Junctions of Beaver Row and Eglinton Road with Donnybrook Road is required. A detailed analysis of all options (circa 12 options) for the Clonskeagh Road/Beech Hill Road junction is being progressed. Procurement of a Ground investigation contractor to facilitate design changes on Beaver Row is underway. Scheme is planned to move to detailed design in Q3 2025 and is scheduled to commence construction in Q3 2026 subject to funding.

Milltown Road - Dodder Walk to Dundrum Road – Further engagement with Eirgrid and ESB Networks about inclusions of 'Powering Up Dublin' High Voltage Ducting in the design is ongoing. The scheme has commenced detailed design. Engagement is ongoing with all internal DCC departments and external stakeholders. Construction is planned to commence in Q4 2025 subject to funding.

Dodder Walk to Orwell Road – This section is currently in the options selection stage of the project with the emerging preferred route expected to be known in Q2 2025. The delivery of this section will require integration of park uses at Dartry Park.

The scheme will deliver 7.5km of walking and cycling facilities along the Dodder River, from the River Liffey to Orwell Park. A further 9.5km is being delivered by South Dublin County Council.

6.3. Sandyford (Clonskeagh) to City Centre

Detailed design is now underway on Phase 1 of the permanent scheme from Woodstock Gardens on Sandford Road to the City Council boundary at River Dodder on Clonskeagh Road. This quarter, work has been ongoing on the detailed design with input from DCC internal stakeholders (Parks, Conservation, Public Lighting, Roads etc) and external stakeholders (ESB, Irish Water, Dublin Bus etc). A review has been undertaken with regards to green infrastructure and bus stop design and requirements. The drawings and specifications are being prepared for the tender pack. This section of the scheme is expected to go to site in Q4 2025.

The permanent scheme will provide high-quality walking and cycling facilities along with significant urban realm from Clonskeagh Road to Charlemont Street (3.1 km). It extends from the River Dodder along Sandford Road, Ranelagh, Ranelagh Road and Charlemont Street to the Junction of Harcourt Road.

Following on from the non-statutory public consultation held in Q1 2023 a Public Consultation Report has been completed and was published on the DCC website in Q4 2024.

6.4. Kilmainham to Thomas Street Cycle Route

The concept design for permanent measures for the full route of the Kilmainham to Thomas Street project is in progress.

Suir Road/ Dolphins Road/ Davitt Road/ Slievenamon Road junction: The upgrade of the Suir Road junction is a priority due to safety concerns. It is proposed be delivered in advance of other sections of the route.

Due to the significant interest in the scheme and given the high volume of submissions, consultants are undertaking design changes and consultation with the NTA and relevant DCC departments is ongoing. Over the last quarter the significant work has been done in reviewing and updating the public consultation report. This will be followed by reviewing and updating of environmental screening reports. The design team have commenced the process for engagement of an Environmental Consultant to undertake these screenings. Public Consultation of the scheme took place over the summer 2024. The scheme is scheduled to commence Construction in Q1 2026.

Regarding the remainder of the scheme, over the last quarter the design team has been engaging with internal departments as well as the NTA. The option selection process, including a preliminary business case and concept drawings, including landscape concepts for St James' Linear Park have been completed and the project has moved into the preliminary design stage. Preparation of the preliminary design report is currently in progress. Public Consultation for this design is expected to be Q4 2025.

This active travel route will deliver 2.6km of protected cyclepaths and improved pedestrians facilities from Kilmainham Gaol along South Circular Road, Suir Road, Grand Canal View, St James Linear Park, James Walk, Forbes Lane, Marrowbone Lane and with a link to Thomas St.

6.5. Trinity to Ballsbridge

Holles St to Lansdowne Road (Interim Scheme) along Mount Street Lower and Northumberland Road is currently undergoing approval process for the construction stage. This phase will deliver 1.6km of segregated cycle tracks using light protective measures and road markings. The Public Consultation Report for this project was published in February 2024.

6.6. Sir John Rogerson Quay Project

The route options selection process and design work is ongoing for the Sir John Rogerson Quay Project. The project is being led by the Docklands Office in collaboration with City Architects. The project objectives are to deliver a coherent, high-quality integrated public realm for the city that protects and enhances the existing national monument of the quay wall. The project will co-ordinate key infrastructure including active travel, flood defence, BusConnects link to Ringsend and the existing docking facility for sea vessels along the South Campshire in line with the DCC North Lotts and Grand Canal Dock SDZ.

The project is to be delivered as part of the City Centre to Ringsend BusConnects scheme. AcTPRO support the project to ensure the needs of pedestrians and cyclists are met, as well as coordinating on the integration with the wider Active Travel Network.

6.7. Grand Canal Greenway (Blackhorse to Portobello)

Work is progressing on the options development and identification of an emerging preferred route. This project phase is expected to be completed in Q2 2025 and will be presented to the local community and stakeholders through a non-statutory public consultation. The outcome of the option selection process and updated ecological screening reports will determine the statutory approval process and programme for construction.

The key achievements in Q1 include the initial engagement with the Disabled Persons Organisations on the project, the Feasibility and option selection report and traffic modelling report have been drafted. Traffic survey work has been completed as well as an initial ecological survey of the project area.

6.8. Santry Greenway

The project is being led by the Water Framework Directive Office in collaboration with Fingal County Council and DCC Active Travel Programme Office. The Active Travel Programme Office is only providing support for the integration of active travel infrastructure.

6.9. Finglas Village Improvement Scheme

During this quarter, the detailed design has been ongoing. In addition, the tender pack preparation also got under way. The scheme is planned to go to construction in Q4 2025.

The Scheme aims to improve pedestrian, cycling and public transport facilities for Finglas Village through the provision of new cycle tracks, improved intermodal transfer facilities within the village and enhanced links to the future Finglas Luas stop.

Following the public consultation in 2024, the design was modified where appropriate taking into account the feedback from the public. Updates on the scheme will be available on the DCC website (dublincity.ie/activetravel) as the project progresses.

6.10. Finglas to Killester

The Finglas to Killester Active Travel Scheme is currently at the Concept Development and Options Selection phase

In this quarter, the feasibility report was prepared and is now undergoing a review process. The current phase is expected to be completed in Q2 2025.

The Preliminary Design commences after the current phase, followed by a Public Consultation period proposed in Q1 2026. The Detailed Design then follows with the scheme expected to go to construction in 2028.

The Finglas to Killester Active Travel Scheme proposes the development of improved, or new, Active Travel infrastructure between Finglas and Killester. The route commences on McKee Avenue and Cappagh Road to the north and west of Finglas village centre respectively, and extends to St Anne's Park in the east via Killester village. The route is approximately 10km in length and is primarily along the R103 regional road (incorporating Glasnevin Avenue, Collins Avenue and Collins Avenue Extension). East of Killester village the scheme travels along Howth Road and Furry Park Road before entering St Anne's Park.

6.11. Finglas Area Roundabouts Scheme

There was no design progress during this quarter due to an ongoing review of the additional design requirements. This has necessitated additional procurement compliance actions to be applied before further work can commence.

This project will address the pedestrian and cycle priority at two separate junctions:

- Jamestown Road Roundabout has four arms forming a junction between Jamestown Road (north and south arms), Melville Road (west arm) and Poppintree Park Lane (east arm).
- St. Margaret's Road Junction with McKee Avenue is comprised of a four-arm roundabout. One of these arms is the entrance and exit for a Lidl supermarket.

6.12. North Circular Road

Over the last quarter the design team have developing designs for traffic signals for North Circular Road/ Fitzgibbon Street/ Russell Street and North Circular Road/ Summerhill Road junctions, as well as engaging closely with other internal departments to ensure compliance with cross cutting policies. The team have also engaged a Road Safety Auditor to undertake a Road Safety Audit of the revised design. The Consultants have also been updating the scheme cost estimates, the Preliminary Business Case and a Preliminary Design Report.

A significant revision of this previous design following review of public consultation submissions and in line with new NTA Cycle Design Guidance has been carried out. This revised design includes greater protection for pedestrians with more signalised crossings, continuous footpaths. It will also provide additional greening, landscaping and six new bus stops along the route.

A second round of Public Consultation is now proposed to be undertaken on the new design. A report on the first Public Consultation will be published along with the revised designs in Q2 2025.

This Active Travel Scheme will deliver 1.1km of protected cycle paths, improved pedestrian facilities and cycling friendly upgrade to the signalised junctions at Belvedere Road, Fitzgibbon Street and Summerhill. Public Consultation on an interim scheme design was undertaken in 2023.

6.13. Ratoath Road & Cappagh Rd (Cabra to Blanchardstown)

Over the last quarter the design team have met with Fingal County Council Active Travel and Planning Departments to present the project proposals. A tree survey has been undertaken, which shows the extent and type of trees along the route and the design team are engaging with the Parks Department to ensure the impact of the scheme

on trees will be mitigated as much as possible. The design team have also met with representatives of the Deaf Village to present the project. The Public Consultation Report will be published when preliminary design is concluded which is expected to be in Q2 2025.

The planning and design for a separate Ratoath Road Upgrade (1km) project from Westwood to Ratoath Avenue is proceeding in parallel with the above 4.1km Active Travel route project. Feasibility and options assessment has commenced. Consultants have commenced the undertaking a constraints assessment and the development of concept designs for a full road upgrade including walking and cycling facilities.

This Active Travel Route will deliver 4.1km of protected cycle paths and improved pedestrian facilities along Ratoath Road and Cappagh Road. The scheme commences at the junction of Navan Road/ Cabra Road and finishes at the junction of Cappagh Road / Avila Park near the border with Fingal County Council. Consultants are progressing with Preliminary Design and are engaging with stakeholders. The scheme includes Safe Route to School Treatments outside a number of Schools including New Cross College, Cappagh Road and St Declan's on Nephin Road.

6.14. Dalymount to Cabra Cross

A Feasibility and Options Report along with a Project Execution Plan, Stakeholder Plan, Risk Register, Cost estimates, and a concept design was approved by the NTA in February 2025.

The Consultants are now proceeding with Preliminary Design. Over the last quarter the design team have had meetings with Conservation, Archaeology and also with the Dalymount Park Redevelopment project team.

The design team are also engaging with the bus teams as the project links with two Bus Connects projects, i.e. the Blanchardstown to City Centre CBC at Navan Road/ Cabra Road and to the Ballymun to City Centre CBC at Phibsborough Road/ Eglinton Terrace.

The Dalymount to Cabra Cross scheme will provide 1.5k of improved walking & cycling facilities from Cabra-Road; from Cabra Cross (junction with the Navan Road) to junction with North Circular Road /Eglinton Terrace.

6.15. Coolock to Clontarf

The Coolock to Clontarf walking and cycling route is 5.1km in length and is proposed to be delivered in three Phases:

Phase 1- Gracefield Rd to Vernon Avenue along Gracefield Road, Brookwood Avenue, Sybil Hill Road and Vernon Ave. (2.6km). This scheme is currently at Preliminary Design Stage. To inform the development of the design, site investigations were undertaken along the route in Q1 2025. These will provide additional information on the extent, size, location and depth of roots within the grass verges. The results of these investigation will inform the Arborist report which will in turn provide clarity on the potential impact of the various design options on trees, and possible mitigation measures. Whilst these investigations were ongoing, the team has been re-examining the entire Gracefield Road to Vernon Avenue route, taking into consideration the concerns from all key stakeholders including the community and Elected Members.

The Active Travel team are engaging with Parks Services to discuss the positive and negative impacts of the design on the existing and proposed trees and green infrastructure.

The Active Travel team plan to meet with Elected Members and residents to discuss the project once the reports, investigations and analysis are finalised.

Phase 2- Vernon Ave to Clontarf Rd along Vernon Avenue terminating at the junction with Clontarf Road. Following early engagement meetings with DPO's, community and businesses in Q4 2024, Consultants prepared and finalised the Early Engagement Report. The report was issued to key stakeholders and published on DCC webpage in January 2025.

Engineering Consultants commenced Feasibility and Options Selection Stage in January 2025 and engagement with internal stakeholders ongoing. Over the last quarter the design team have had meetings with Conservation, Archaeology, Parking Enforcement and the Clontarf Flood Defence teams.

Phase 3- Artane Roundabout to Clonshaugh Road from Artane Roundabout, along Ardlea Road, Kincora Rd, Oscar Traynor Rd, Clonshaugh Rd, Concept design is programmed to commence in Q1 2027.

6.16. Kilbarrack Rd to Oscar Traynor Rd (Bayside to Donaghmede)

Currently, consultants are developing the Preliminary Design Report and Preliminary Business Case for the project. Over the last quarter additional pedestrian and traffic counts were commissioned and undertaken along the route.

Also in this quarter a tree survey report has been received and reviewed which shows the extent and type of trees along the route. The design team have been engaging with the Parks Department to ensure the impact of the scheme on trees will be mitigated as much as possible. During this period the design team have also had meetings with Conservation, Archaeology and Property Departments to inform the preliminary design.

The Public Consultation Report will be published when preliminary design stage deliverables are finalised and approved in Q2 2025.

This Active Travel Route will deliver 5.14km of light segregation protected cycle paths and improved pedestrian facilities along Kilbarrack Rd, Tonlegee Road and Oscar Traynor Rd from the junction with James Larkin Road to the junction with Bunratty Road.

6.17. Ringsend to City Centre

Works on the Feasibility and Options Report along with a concept design is currently ongoing. Over the last quarter workshops were undertaken on options with DCC Traffic Department and NTA. The design team have also met with Conservation, Archaeology Departments and the NTA bus teams to inform the concept designs.

Feasibility and Options report is due to be finalised and submitted to the NTA for approval in Q2 2025.

This 2.8km active travel scheme will provide a segregated cycle route and improved walking facilities from Ringsend along Pearse Street to the city centre (College Green).

6.18. East Wall to North Wall Road

Concept development and options selection commenced in August 2024. Engagement with stakeholders in the community was undertaken on 5th March 2025 in the Sean O Casey Community Centre, East Wall. The Consultant is finalising the reports summarising the findings of the engagement and it is expected to be published in Q2 2025.

The North Wall Quay to East Wall Road scheme will provide 1km of improved walking & cycling facilities from North Wall along New Wapping Street and East Road, linking to the active travel scheme recently constructed at East Wall Road.

6.19. Kimmage Road Lower to Clogher Road

Harold's Cross to Ballymount Walking and Cycling Scheme

Early engagement on the project was undertaken in December 2024 with the pre-design community consultation and DPO engagement.

The Early Engagement report was issued to elected members, DPOs and attendees and published on DCC webpage in January 2025. An Engineering Consultant is expected to be appointed in Q2 2025 to commence route option selection phase.

The Kimmage Road West to Clogher Road Active Travel project will provide 1.5km of new walking and cycling infrastructure connecting Kimmage Road to Sundrive Road / Eamonn Ceannt Park.

6.20. S2S Clontarf Baths

The Active Travel Programme Office, with the support of the Planning and Development Department issued the Heads of Terms to enable the transfer of lands required for the development. An agreement is being finalised with the landowner, AcTPRO will endeavour to proceed to complete the detailed design with a view to proceeding to construction when funding becomes available.

6.21. Chapelizod Road to Chapelizod Bypass (Conyngham Road to Chapelizod Village)

Concept development and options selection commenced in Q4 2024. Design on the options selection and stakeholder engagement is ongoing and is anticipated to be completed in Q2 2025. Over the last quarter the concept design for the emerging preferred option was issued to the NTA and feedback received. The design team have also met with Conservation and Archaeology Departments to inform the concept designs.

A tender for engagement of Conservation and Archaeology Consultants was issued and it is expected that they will be appointed over the coming months.

The design team have also met with a number of other project teams that interact with the Chapelizod Road Active Travel Project to ensure that the projects align. Meetings have taken place with the OPW with regards to the new bridge over the River Liffey from Chapelizod Road to the War Memorial Gardens.

The Chapelizod Road to Chapelizod Bypass (Conyngham Road to Chapelizod Village) scheme will provide 3.1km of improved walking & cycling facilities from Chapelizod Village to the junction of Conyngham Road and Chesterfield Avenue at the entrance to the Phoenix Park, linking to the Liffey Cycle Route. This scheme also includes a section along the South Circular Road connecting to the War Memorial Gardens.

6.22. Chesterfield Avenue Walking & Cycling Scheme

The key achievements in Q1 include the initial draft of the Feasibility and option selection report and traffic modelling report.

Traffic survey work has been completed as well as draft environmental screening reports the project area. Work is progressing on the options development and identification of an emerging preferred route. This project phase is expected to be completed in Q2 2025 and will be presented to the local community and stakeholders through a non-statutory public consultation. The outcome of the option selection process and updated ecological screening reports will determine the statutory approval process and programme for construction.

The Chesterfield Avenue Walking & Cycling Scheme involves the upgrade of walking and cycle facilities in the Phoenix Park between Castleknock and Conyngham Road/Parkgate Street.

6.23. South City Loop Phase 1 – South Circular Road

The first phase of the project focuses on the delivery of the Brookfield Road junction, adjacent to St James Hospital entrance.

The project is currently at the concept development and option selection phase. This phase is expected to be completed in Early April 2025. A submission that summarises the options selection work and identifies the preferred option have been submitted to the NTA for review.

The project is anticipated to go to construction in advance of the opening of the hospital in 2025, subject to the preferred option being approved, environmental screening reports and funding availability.

When fully completed, the overall scheme will provide 9km of high-quality walking and cycling facilities linking Kilmainham to Ballsbridge. The proposed route will also link Rialto, Crumlin, Kimmage, Harolds Cross, Rathmines, Ranelagh and Donnybrook.

Complete Active Projects Table –

NTA Code	Project Name	Committee Area (s)	Length (km)	Additional Information
DCC/12/0007	Royal Canal Greenway - Phase 3	Central Area (CA)	2.1	Update in item 5.2 of report
DCC/12/0008	Liffey Interim Scheme (Georges Quay to Crampton Quay)	South East (SE)	0.8	Update in item 5.4 of report
DCC/12/0016	Finglas Village Improvement Scheme	North West (NW)	0.2	Update in item 6.9 of report
DCC/12/0024	Grand Canal (Blackhorse to Portobello)	SC, SE	4.5	Update in item 6.7 of report
DCC/12/0033	Clontarf to City Centre	CA, NCA	3	Update in item 5.1 of report
DCC/12/0035	Dodder River Greenway	South East (SE)	5.2	Update in item 5.7 & 6.2 of report
DCC/14/0001	Sandymount (Clonskeagh) to Charlemont Street	South East (SE)	3.2	Update in item 6.3 of report
DCC/18/0001	Dodder Greenway - Herbert Park to Donnybrook Road	South East (SE)	0.5	Update in item 5.3 of report
DCC/19/0006	Finglas Area Roundabouts Scheme	North West (NW)	0.1	Update in item 6.11 of report
DCC/21/0001	Finglas to Killester	NC, NW	9.5	Update in item 6.10 of report
DCC/21/0006	Chapelizod Road to Chapelizod Bypass	South Central (SC)	4.8	Update in item 6.21 of report
DCC/21/0007	Kilmainham to Thomas Street	South Central (SC)	2.6	Update in item 5.5 & 6.4 of report
DCC/21/0009	Coolock to Clontarf	North Central (NC)	2.5	Update in item 6.15 of report
DCC/21/0011	Santry River Greenway	North Central (NC)	7	Update in item 6.8 of report
DCC/21/0017	Ringsend to College Green	South East (SE)	3.6	Update in item 6.17 of report
DCC/21/0020	North Circular Road	Central Area (CA)	3.3	Update in item 6.12 of report
DCC/21/0028	Cabra to Blanchardstown	CA, NW	5.1	Update in item 6.13 of report
DCC/21/0030	Chesterfield Avenue	Central Area (CA)	4.2	Update in item 6.22 of report
DCC/21/0031	Kilbarrack Rd to Oscar Traynor Rd (Bayside to Northside)	North Central (NC)	6.8	Update in item 6.16 of report
DCC/22/0003	Sir John Rogersons Quay	South East (SE)	0.5	Update in item 6.6 of report
DCC/22/0004	Clontarf Baths Active Travel Elements	North Central (NC)	0.1	Update in item 6.20 of report
DCC/22/0016	Dalymount to Cabra Cross	Central Area (CA)	1.5	Update in item 6.14 of report
DCC/22/0018	East Wall to North Wall	Central Area (CA)	1.5	Update in item 6.18 of report

NTA Code	Project Name	Committee Area (s)	Length (km)	Additional Information
DCC/22/0022	Kilmainham to Ballsbridge South City Loop	SC, SE	7	Update in item 6.23 of report
DCC/22/0025	Trinity to Ballsbridge	South East (SE)	2.2	Update in item 6.5 of report