



Sandford to Clonskeagh to Charlemont Street  
Interim pedestrian & Cyclist Improvement Scheme (Ranelagh) Phase 1

**CONSTRUCTION UPDATE FLYER**

**RE: ANNA VILLA LOADING BAY AND STREET PARKING**

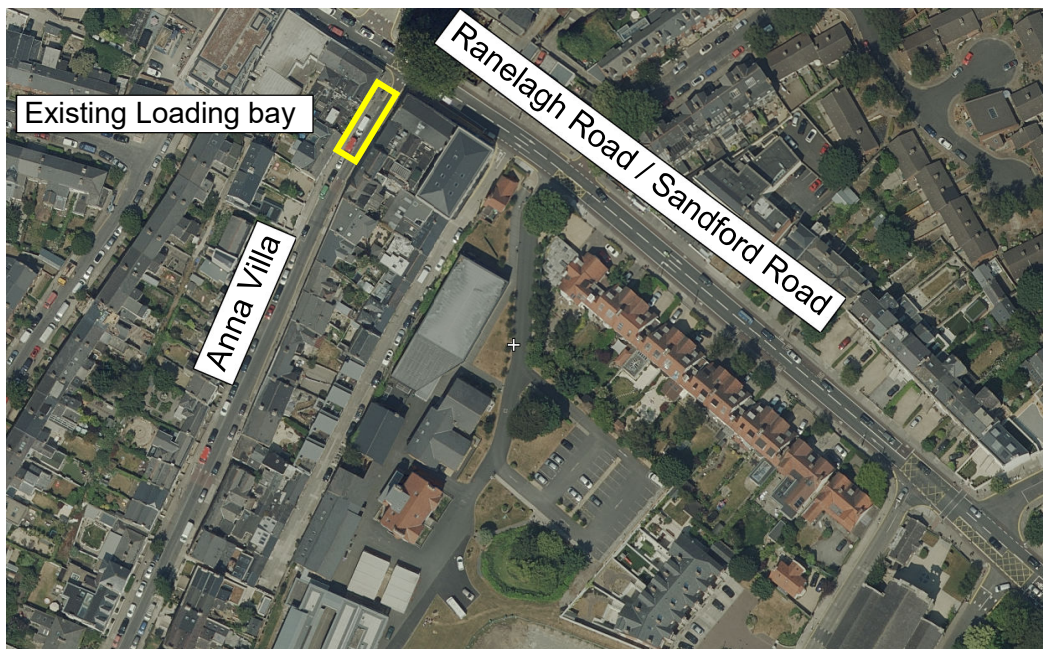
Dublin City Council has received a number of queries from residents along Anna Villa Road relating to residents parking and the existing loading bay.

**LOADING BAY**

DCC does not intend to extend the size of the loading bay located on Anna Villa near the junction of Ranelagh and Sandford Road. However, what is being considered is an extension in the times the loading bay is operational. Currently it operates from 7.00am hours to 19.00 hours. The loading bay will be extended to 24 hours Monday to Sunday. This extension will facilitate the extinguishment of the loading bay on the main street, allowing for better movement for pedestrians and cyclists on the village's main street.

**RESIDENTIAL STREET PARKING**

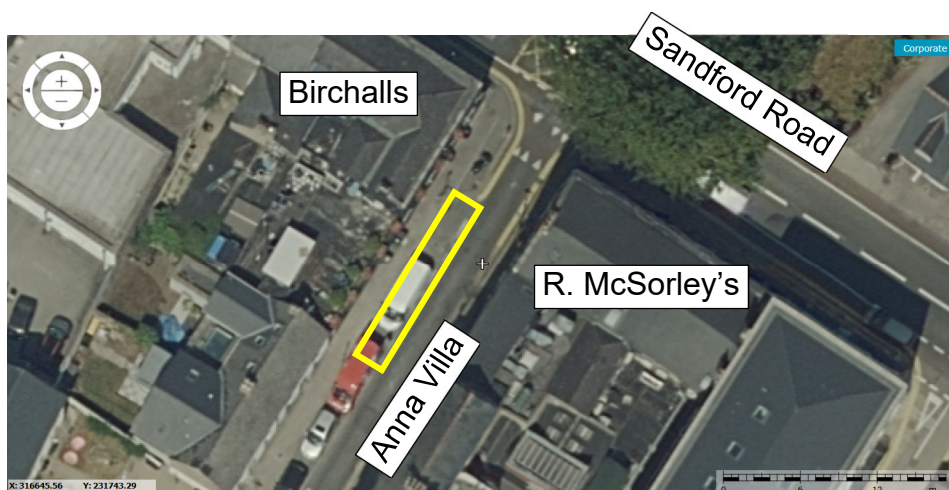
In relation to the residential parking, DCC does not intend to remove the designated residential parking along Anna Villa. However, we are planning to refresh and regularise the line marking in the very near future.



Thank you for your co-operation.

More detailed information is available overleaf.

For further information please consult our webpage on [www.dublincity.ie/activetravel](http://www.dublincity.ie/activetravel), or contact us on telephone 01 222 2536, or on email at [ActiveTravelOffice@dublincity.ie](mailto:ActiveTravelOffice@dublincity.ie).



Changing the times from  
**07:00 to 19:00 Monday to Saturday**  
to  
**24 hours Monday to Sunday**