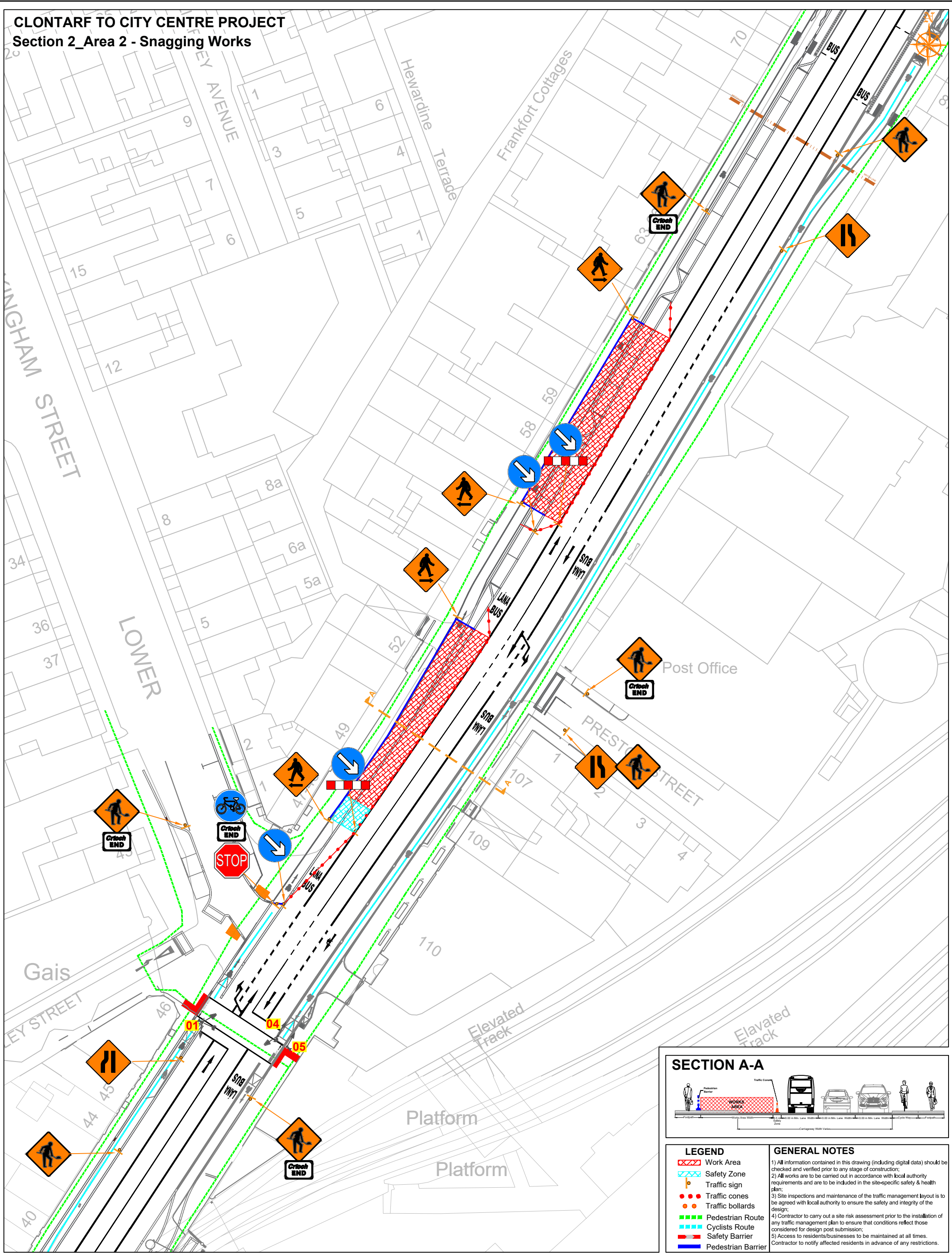
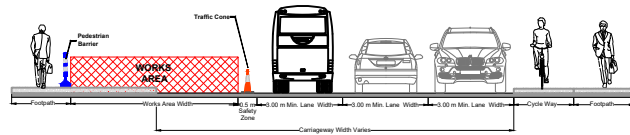


CLONTARF TO CITY CENTRE PROJECT
Section 2_Area 2 - Snagging Works



SECTION A-A



LEGEND

- Work Area
- Safety Zone
- Traffic sign
- Traffic cones
- Traffic bollards
- Pedestrian Route
- Cyclists Route
- Safety Barrier
- Pedestrian Barrier

GENERAL NOTES

- All information contained in this drawing (including digital data) should be checked and verified prior to any stage of construction;
- All works are to be carried out in accordance with local authority requirements and are to be included in the site-specific safety & health plan;
- Site inspections and maintenance of the traffic management layout is to be agreed with local authority to ensure the safety and integrity of the design;
- Contractor to carry out a site risk assessment prior to the installation of any traffic management plan to ensure that conditions reflect those considered for design post submission;
- Access to residents/businesses to be maintained at all times. Contractor to notify affected residents in advance of any restrictions.



Copyright Notes:
This drawing is the property of Road Control Services Ltd. The design information contained herein is strictly confidential. This document is not to be used, reproduced, disclosed or circulated in whole or in part without prior written consent.

CLIENT



DESIGN PARAMETERS

Speed Limit	60	Sign size (diamond)	600mm
Road Classification	1(IV)	Sign size (circular)	600mm
Roadworks type	A	Minimum Cone size	750mm
Number of advance signs	3	Cone spacing at tapers	3m
Sign visibility	60m	Cone spacing longitudinal	6m
Distance between signs	20m	Lateral Safety Zone	0.5m
Taper at lane	1in10	Longitudinal Safety Zone	15m
Taper at hard shoulder	N/A	Minimum lane width	3.0m

Rev	Date	Details	Drn	Chk	App	Drn	DS
						Chk	MA
						App	DH
						Date	06/06/2025
						Scale	A1 NTS A3 NTS
						Stage	CONSTRUCTION

Project	CLONTARF TO CITY CENTRE PROJECT
Title	TRAFFIC MANAGEMENT PLAN Section 2_Area 2 Snagging Works
Drawing No	C21020_00_410
Rev	0