

The My Open Library Service offers extended opening hours by providing library access to My Open Library members from 8 am to 10 pm every day. Staffed hours continue on the normal schedule. You must be 16 or over to register for this service. Under 16s can access only with a parent or guardian.



Entering and Exiting the library

1. You must have your library card and PIN. Scan your card under the barcode reader beside the front door.
2. The barcode must be facing up and the numbers facing in. When you hear a beep, enter your PIN. The door will open automatically for 15 seconds.
3. Wait in the porch until the door has closed. It is your responsibility not to let anyone else in. You must enter separately from any other My Open Library Member.
4. When exiting the library press the silver and blue 'Press to open' button located on the right hand side of the door.

**THE LIBRARY IS MONITORED BY CCTV
AT ALL TIMES.**

Toilet Facilities



- The accessible toilet is located in the activity room (indicated on the Map)
- In case of emergency use the intercom inside the toilet to contact the library security company who will assist you.

Closing time



The library closes at 10pm sharp. Please follow the audio instructions and leave the library on time. The intruder alarm will set automatically at closing time. Anyone remaining in the library after 10pm will activate the intruder alarm, alerting the security company. We are located in a quiet residential area. Please be mindful of our neighbours when leaving the building at night.

Reporting Issues



Email walkinstownlibrary@dublincity.ie to report any issues arising while using My Open Library at Walkinstown library. In the case of an emergency, follow the procedure below.

Emergency Procedure

If there is a fire alarm or power cut, please leave the library through the nearest emergency exit. You will hear loud siren in the event of a fire alarm.

There are three emergency exits (as shown on the map)

- One in the activity room.
- One at the back left corner of the adult library.
- Through the main front door.



The Assembly Point is under the tree on the footpath outside the library on Percy French Road. It is marked as an Assembly point.



If you feel unsafe in the library, or someone follows you in without using their card and PIN:

Use the emergency phone (shown on map) to contact the monitoring company or use your mobile phone to contact the monitoring company on **049-9527100**



In the case of an emergency use your mobile phone to call **999 / 112** for emergency services.

The Library Eircode is **D12 FK18**

A First Aid Box is located beside the emergency phone.



Walkinstown Library

Day	Staffed Hours	My Open Library
Monday	1.00pm – 8.00pm	8.00am – 1.00pm 8.00pm – 10.00pm
Tuesday	10.00am – 5.00pm	8.00am – 10.00am 5.00pm – 10.00pm
Wednesday	1.00pm – 8.00pm	8.00am – 1.00pm 8.00pm – 10.00pm
Thursday	10.00am – 5.00pm	8.00am – 10.00am 5.00pm – 10.00pm
Friday	10.00am – 1.00pm 1.45pm – 5.00pm	8.00am – 10.00am 1.00pm – 1.45pm 5.00pm – 10.00pm
Saturday	10.00am - 1.00pm 1.45pm – 5pm	8.00am – 10.00am 1.00pm – 1.45pm 5.00pm – 10.00pm
Sunday	No Staff	8.00am – 10.00pm



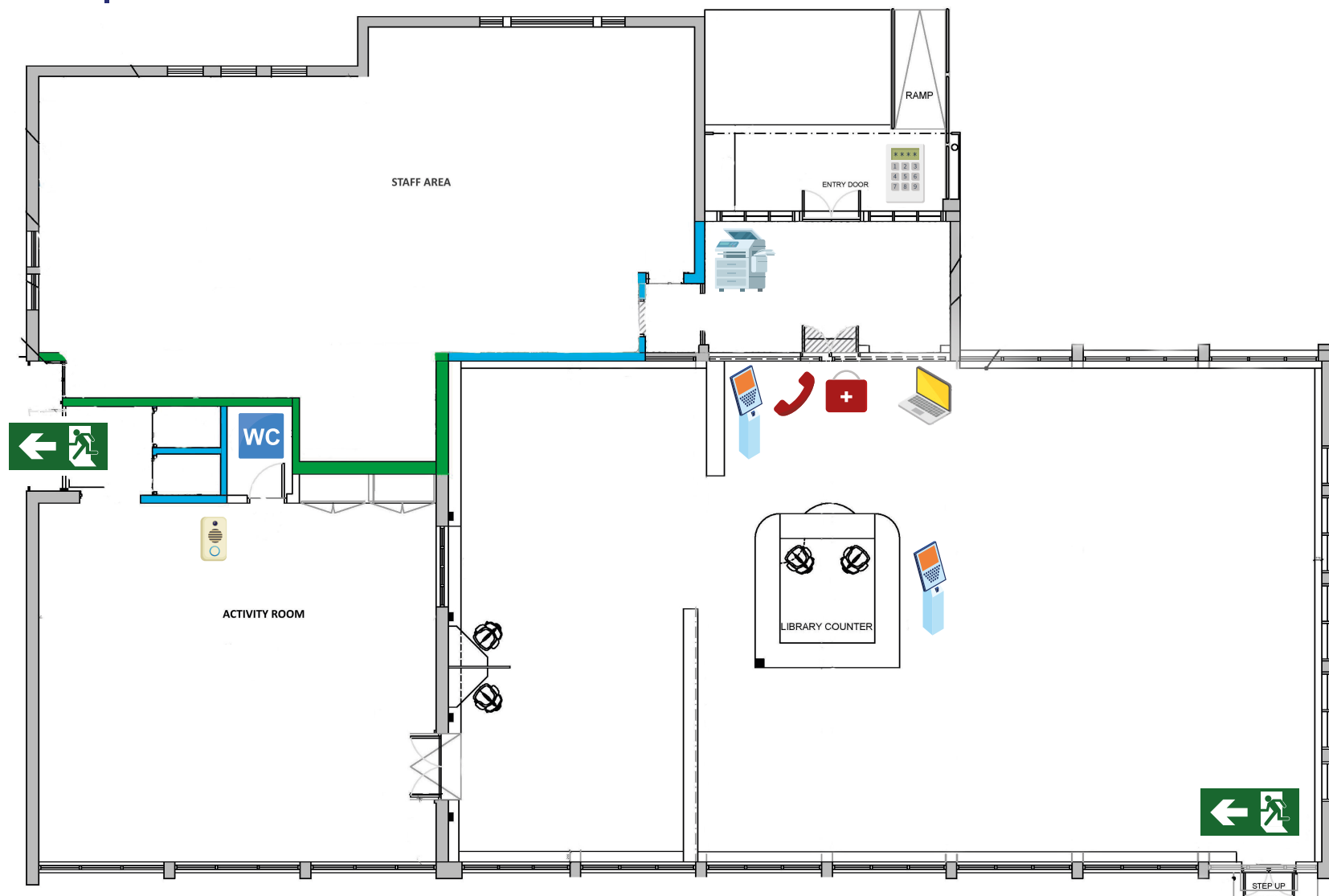
Comhairle Cathrach
Bhaile Átha Cliath
Dublin City Council

Leabharlanna
Libraries





Walkinstown Library Map



Intercom to
Monitoring
Company



Accesible WC



Self Service Kiosk



Barcode Reader
& Pin Pad



Emergency Exit



Surfbox Printing



Emergency Phone



First Aid Box



Computers
& Laptop Lending



Comhairle Cathrach
Bhaile Átha Cliath
Dublin City Council

Leabharlanna
Libraries