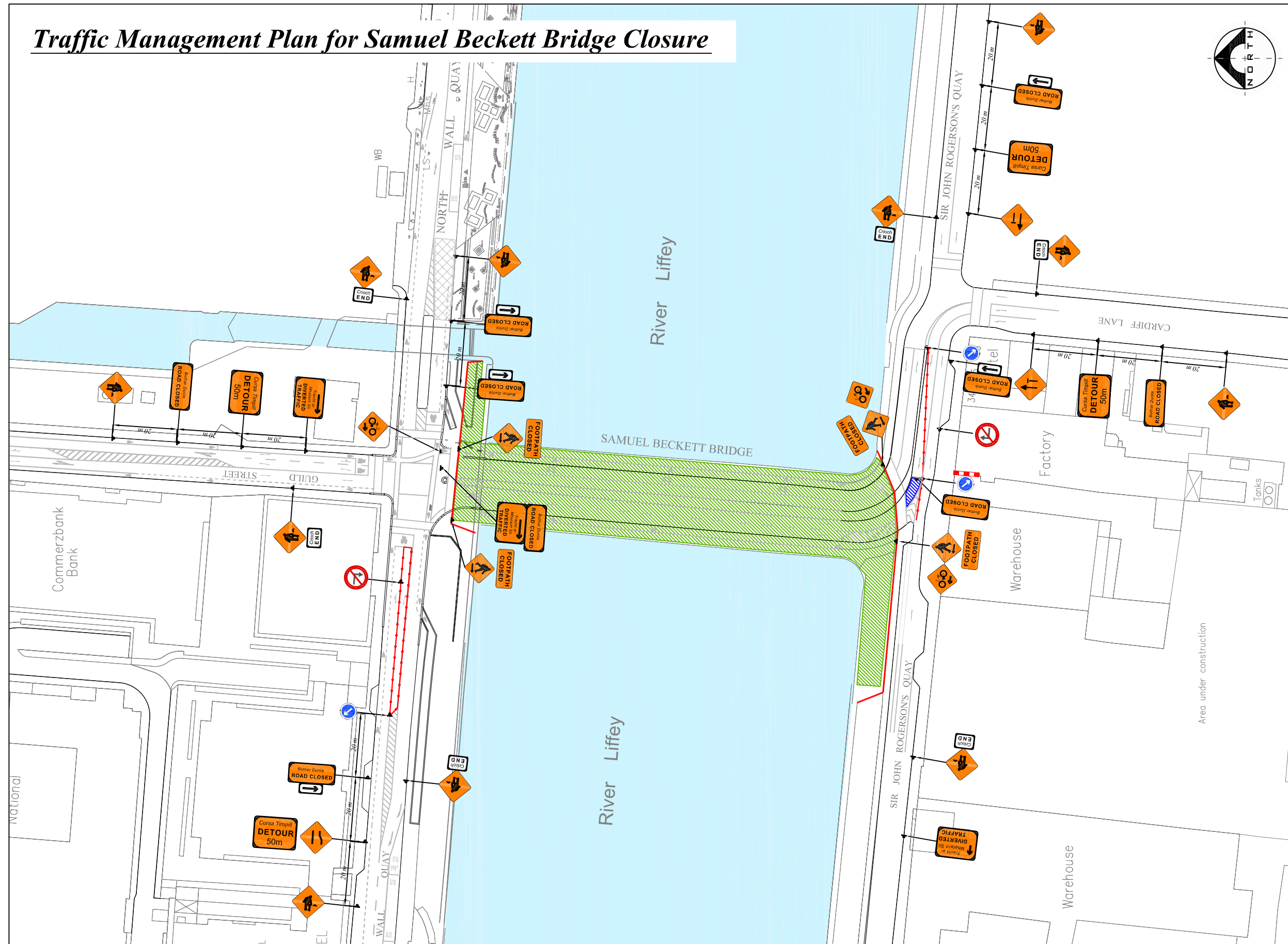








## *Traffic Management Plan for Samuel Beckett Bridge Closure*



### LEGEND

- |   |                                   |
|---|-----------------------------------|
|  | <i>Sign Location</i>              |
|  | <i>Lateral Safety Zone</i>        |
|  | <i>Approved Heras Fencing</i>     |
|  | <i>Traffic Cones</i>              |
|  | <i>Works Area Surrounded with</i> |
|   | <i>Approved Barrier</i>           |
|  | <i>Longitudinal Safety Zone</i>   |

#### Design Parameters for Level 1(iv)

1. *Statutory Speed of the Road* **50km/h**
2. *Distance between Adv. Signs:* **20m**
3. *Number of Advance Signs:* **3No**
4. *Minimum Visibility of Signs:* **60**
5. *Longitudinal Safety Zone:* **15m**
6. *Lateral Safety Zone:* **0.5m**
7. *Leading Taper:* **1 in 10**
8. *Max.at Tapers Cone Space:* **3m**
9. *Max. Longitudinal Cone Space:* **6m**
10. *Sign size:* **600 X 600mm**
11. *Cone High:* **750mm**

*Note:*

1. *All signs to comply with Chapter 8 of the "Traffic Signs Manual"-Guidance Document.*
2. *All Traffic Management to be carried out in accordance with Chapter 8 of the "Traffic Signs Manual".*
3. *Detailed Risk Assessment to be carried out prior to the installation of Traffic Management System.*
4. *The Contractor shall be responsible for providing all required ramp access to all changes in road surface level where traffic runs on a temporary surface and also for cycle/pedestrian ramps where footpath, cycle paths or any surface which has a level discontinuity as a result of the works.*
5. *Exact sign positions to be agreed on site.*
6. *All safety zones to be maintained at all times.*
7. *All affected Parties and An Garda Síochána to be notified prior to works commencing.*
8. *Signs to be positioned so as not to cause an obstruction to other road users.*
9. *All signs to be faced with retro-reflective material to class ref 2 of EN 12899.*
10. *All delineation devices should be designed in accordance with IS EN 13422.*
11. *Safety barrier to be in accordance with IS EN 1317.*
12. *"End of Roadworks" sign placed 20m to 50m from end of works area.*
13. *Footpath/Cycle Lane to be closed for duration of works and pedestrians/cyclist to be diverted to alternative.*
14. *For Proposed Diversion Route refer to drawing no 01.*

Rev:	Description:	Date:	Job Details:		Drawing:		Dwg no:
			Proposed Closure on Samuel Beckett Bridge North Dock Dublin		Traffic Management Detail at Samuel Beckett Bridge Closure		02
							Rev:
			Sheet:	CAD File ref.:	Drawn By:	Date:	Scale:
					AK	May 2025	As Shown