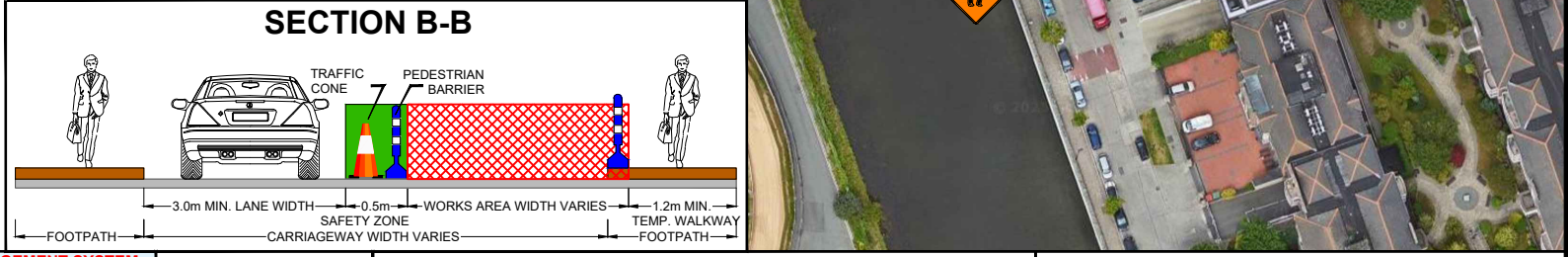
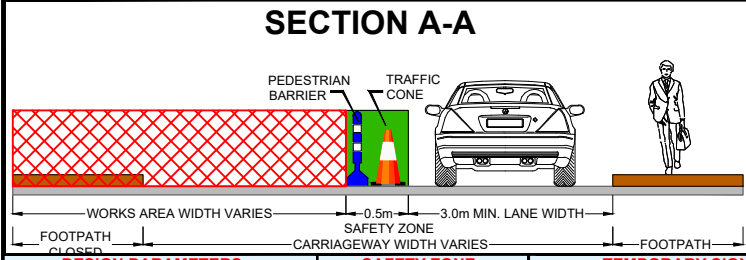
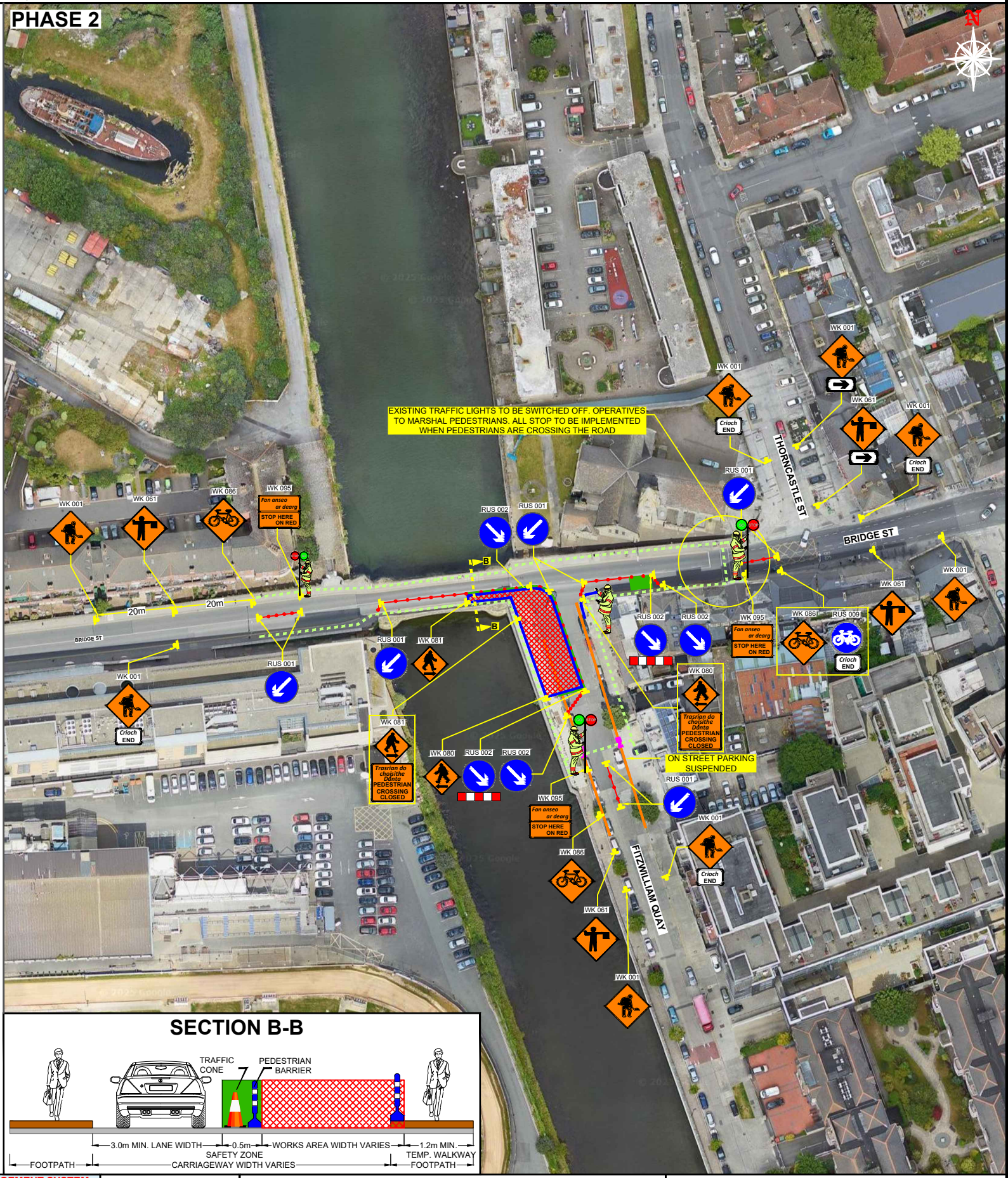
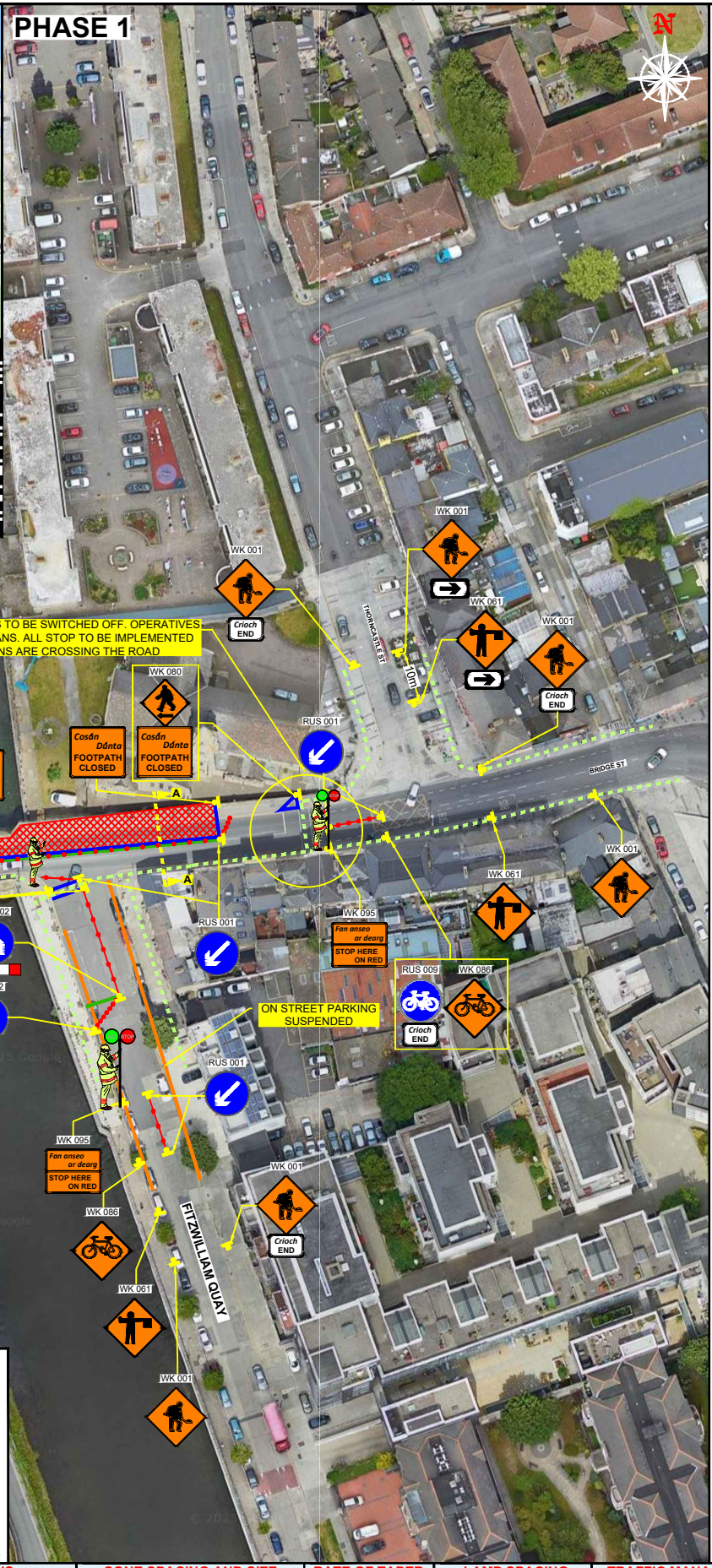
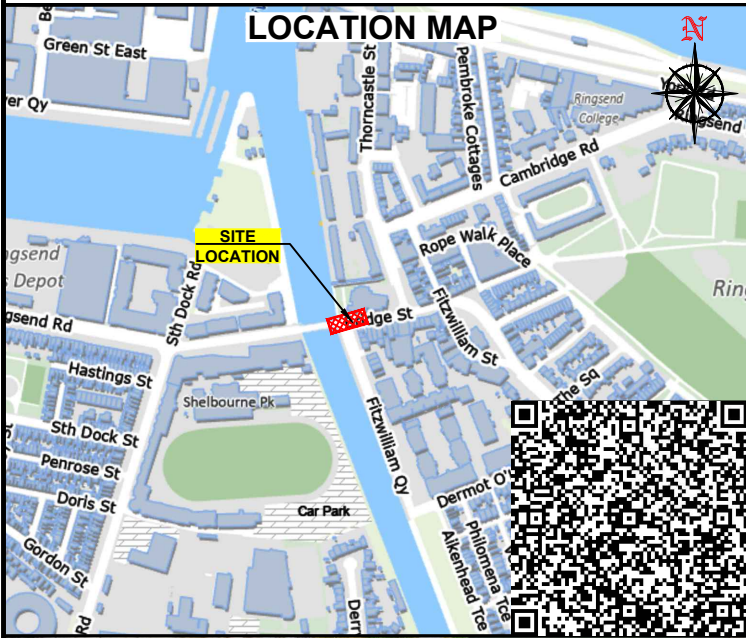


BRIDGE ST, DUBLIN SOUTHSIDE, CO. DUBLIN - CIVIL WORKS



DESIGN PARAMETERS		SAFETY ZONE			TEMPORARY SIGNS			CONE SPACING AND SIZE			RATE OF TAPER		LAMP SPACING		TRAFFIC MANAGEMENT SYSTEM					
Road Lvl(Sub)	Roadworks Type	Speed Limit (km/h)	Min. Lane Width (m)	Longitudinal (m)	Lateral (m)	Set Back (m)	Distance (m)	Number	Min. Size (mm)	Sign Visibility (m)	Longitudinal (m)	At Tapers	Min. Height (mm)	Taper at H/S (m)	Taper at Lane (m)	At Tapers	Longitudinal (m)	Method	Coned Area Length (m)	Max. Traffic Flow (veh/h)
1 (i)	A	30	3.00	0.5	0.5	-	10	2	450	25	3	1	750	45°	45°	3	6	Stop & Go	500	840
1 (iii)	A	50	3.00	5	0.5	-	20	2	600	50	3	1	750	45°	45°	6	6	Stop & Go	500	840

NOTES:

- 1) ALL INFORMATION CONTAINED IN THIS DRAWING SHOULD BE CHECKED AND VERIFIED BY CONTRACTOR PRIOR TO ANY STAGE OF CONSTRUCTION.
- 2) ALL WORKS ARE TO BE CARRIED OUT IN ACCORDANCE WITH LOCAL AUTHORITY REQUIREMENTS AND ARE TO BE INCLUDED IN THE SITE-SPECIFIC SAFETY & HEALTH PLAN.
- 3) A SITE-SPECIFIC RISK ASSESSMENT SHALL BE CONDUCTED PRIOR TO IMPLEMENTING THE TEMPORARY TRAFFIC MANAGEMENT PLAN TO ENSURE THAT THE ACTUAL SITE CONDITIONS ALIGN WITH THOSE CONSIDERED DURING THE DESIGN PHASE FOLLOWING SUBMISSION.
- 4) CONTRACTOR SHALL BE RESPONSIBLE FOR THE PROVISION OF RAMP ACCESS AT ANY CHANGE IN ROAD SURFACE LEVEL WHERE TRAFFIC RUNS ON A TEMPORARY SURFACE.
- 5) ALL TRAFFIC MANAGEMENT PLAN MAY ONLY BE IMPLEMENTED BY A TTOS WHO MUST CARRY OUT A RISK ASSESSMENT BEFORE IMPLEMENTATION. TTOS MUST BE IN POSSESSION OF CSCS CARD "SIGNING, LIGHTNING AND GUARDING AT ROAD WORKS" CONSTRUCTION REGULATIONS 2006.
- 6) EXACT SIGNS POSITIONS TO BE AGREED ON SITE.
- 7) ACCESS TO BE MAINTAINED TO ALL DWELLINGS / BUSINESSES AT ALL TIMES.

NOTES:

- 8) SITE INSPECTIONS AND MAINTENANCE OF THE TRAFFIC MANAGEMENT LAYOUT IS TO BE CONDUCTED ON A DAILY BASIS TO ENSURE THE SAFETY AND INTEGRITY OF THE DESIGN.
- 9) ALL TEMPORARY FOOTWAYS MUST HAVE A GOOD QUALITY, EVEN SURFACE AND BE MAINTAINED FREE FROM OBSTRUCTION.
- 10) PEDESTRIANS TO BE PROTECTED FROM WORKS AREA BY PEDESTRIAN BARRIER SYSTEM.
- 11) TM OPERATIVES TO MANAGE SITE ACCESS/EGRESS AND MARSHAL PEDESTRIANS DURING WORKS HOURS.
- 12) ALL STOP TO BE IMPLEMENTED WHEN PEDESTRIANS ARE CROSSING THE ROAD.
- 13) EXISTING TRAFFIC LIGHTS TO BE SWITCHED OFF.

LEGEND

- - TRAFFIC CONES
- - SIGN LOCATION
- ▭ - WORKS AREA
- ▭ - SAFETY ZONE
- ▭ - PEDESTRIAN BARRIER
- ▭ - PEDESTRIAN ROUTE
- ▭ - SUSPENDED PARKING
- ▭ - PEDESTRIAN RAMP/MAT OR DROP KERB

GARY KEVILLE TRAFFIC MANAGEMENT LTD.
 Rosemount Business Park, Dublin 11, Co. Dublin, Ireland
 Tel: (+3531) 667 4322; Email: info@gktm.ie
 Visit us at: www.gktm.ie

CLIENT: CAIRN

DESIGNED: VB **SCALE:** NTS
DRAWN: VB **PROJECT TITLE:** BRIDGE ST, DUBLIN SOUTHSIDE, CO. DUBLIN
VERIFIED: SS **DATE:** 22-10-2025
APPROVED: SS **DRAWING NAME:** CIVIL WORKS
STAGE: CONSTRUCTION **DWG. No.:** JC 7620-00-04 **REV:** 0

Copyright Notes: THIS DRAWING IS THE PROPERTY OF GARY KEVILLE TRAFFIC MANAGEMENT. THE DESIGN INFORMATION CONTAINED HEREIN IS STRICTLY CONFIDENTIAL. THIS DOCUMENT IS NOT TO BE REPRODUCED, DISCLOSED OR CIRCULATED IN WHOLE OR IN PART WITHOUT THE PRIOR WRITTEN CONSENT IN EACH INSTANCE OF GARY KEVILLE TRAFFIC MANAGEMENT. © GKTm 2025