

Barnardo Square

Tucked between the grandeur of Dublin City Hall and the storied walls of Dublin Castle, Barnardo Square is a vibrant urban space steeped in history and surrounded by iconic architecture. Named in honour of Thomas Barnardo—a celebrated philanthropist who championed child welfare in Dublin—the square reflects the city’s enduring commitment to humanitarian values. . Once the site of the city’s Unitarian Church, demolished in the 1960s, the space was thoughtfully redeveloped into a public square just twenty years ago. At its corner lies Palace Street, the shortest street in Dublin, adding a quirky charm to the location.

Barnardo Square offers a unique setting for live performances, small scale events or artisan markets.

Area:

- 26 meters x 21 meters (Approx.). 546 Sq meters including granite benches and bollards

Other Services:

- The square features generous granite seating throughout and Dublin Bikes station is situated adjacent to the Fáilte Ireland office

Transport Accessibility:

- Public transport just steps away
- Parking options within a 10-minute walk, including Drury Street Car Park and Q-Park Fleet Street

Contact: parkevents@dublincity.ie



Capel Street

Capel Street, a vibrant commercial artery in Dublin, was originally laid out in the 17th century by Humphrey Jervis. Today, it thrives as a dynamic hub teeming with restaurants, shops, cafés, and pubs, drawing crowds every day of the week with its lively atmosphere and eclectic charm.

Situated in the heart of one of Dublin's most historic and energetic districts, Capel Street lies approximately 0.5 km west of O'Connell Street, bordered by Abbey Street, Mary Street, and Parnell Street. It connects seamlessly to Parliament Street via Capel Bridge.

Recently transformed into a pedestrian-friendly zone, Capel Street has become an ideal setting for open-air markets, street performances, and community gatherings—making it one of the city's most exciting urban spaces.



Area:

- 110 meters x 2.5 meters and 116 x 3m (Approx.),
- 275 Sq and 348 Sq meters (Approx.)
- Movable planters can be relocated upon request

Transport Accessibility:

- Paid parking available just a short walk away in Parnell Centre, Jervis Shopping Centre or Ilac Centre



Docklands Sports Centre

The Quayside project brings a state-of-the-art Water Sports Centre and a modern Docklands office to life, alongside extended pontoons and a beautifully enhanced boardwalk. This vibrant new hub offers unparalleled access to the River Liffey, inviting residents and visitors alike experience exciting activities like canoeing, kayaking and traditional rowing right in the heart of the city.

More than a sports facility, this centre is set to redefine the Docklands as a vibrant civic hub—encouraging active living, attracting tourism, and celebrating cultural experiences. Its sleek, contemporary outdoor seating area offers breathtaking views of the River Liffey, the Jeanie Johnston, and the iconic Samuel Beckett Bridge

Area:

- Boardwalk:
6m meters x 110 meters (Approx.)
660 Sq meters (Approx.)

Transport Accessibility:

- Easily accessible by public transport and within walking distance of Dublin City Centre

Additional guidance can be found online:

[HQ20 Watersport - Explore the Liffey like never before.](#)

Contact: infodocklands@dublincity.ie



Grand Canal Square

Apleona Real Estate, acting on behalf of Grand Canal Harbour Management Limited, oversees the management of designated areas within the Grand Canal Harbour.

Use of public spaces is subject to approval and requires submission of specific details as outlined in the permit application process. A valid permit is mandatory for any contractor works on common area grounds or for hosting events on Grand Canal Square.

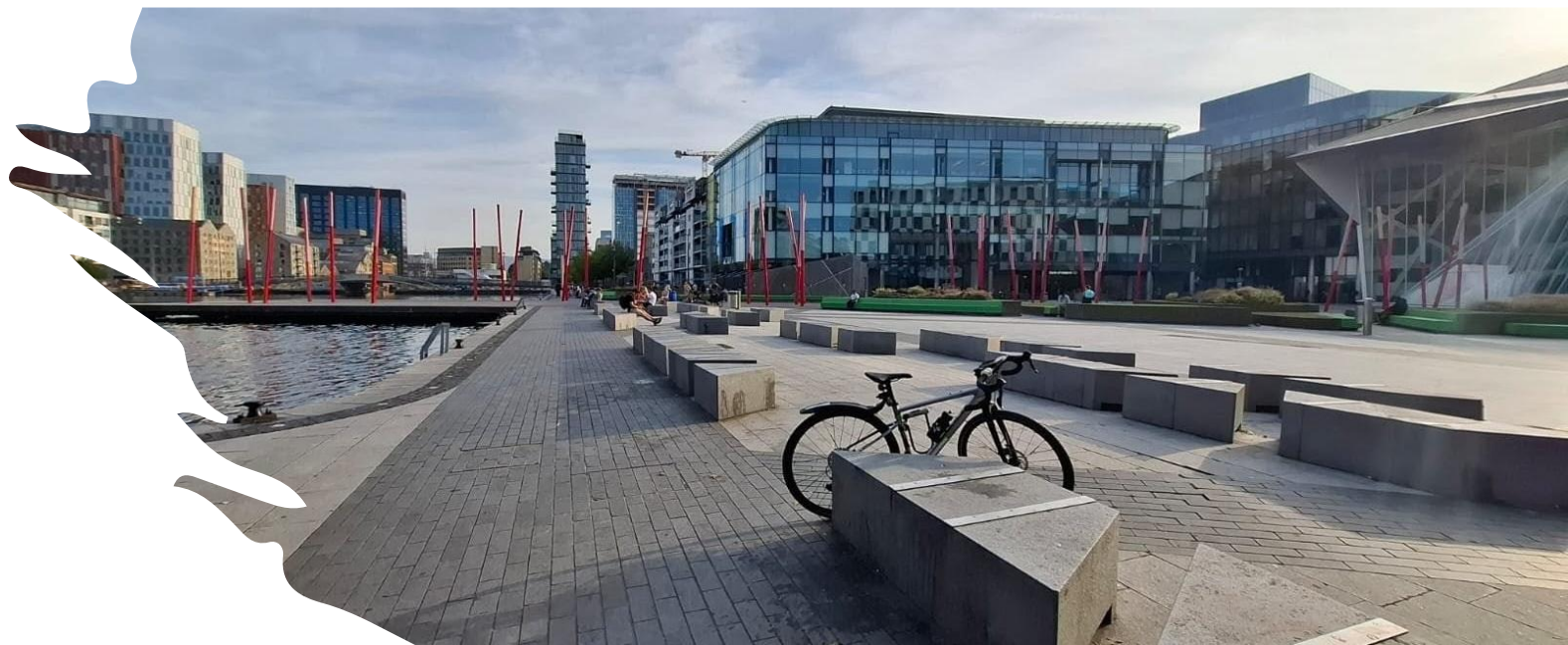
Area:

- Approx. 10,000 Sq meters
- A green band of planting and grass stretches diagonally across the square, intersected by an irregular network of pathways. These paths cut through the raised lawns and planters, forming organic routes that reflect natural pedestrian movement.

Additional guidance can be found online:

[Public Spaces & Permits - My Grand Canal Dock](#)

Contact: permits.irl@apleona.com



Meeting House Square

An award winning architectural space in the heart of Dublin's Temple Bar. This multipurpose outdoor performance space is ideal for hosting cultural events. The venue capacity is 500-600 standing and 300 seated, wheelchair access is provided.

Area:

- 23 meters x 32 meters (Approx.)
- 800 Sq meters (Approx.)

Underground Services:

- Electrical supply through power supply cabinets, available connection 3-phase 63A and 32A, 16A single-phase sockets
- Panasonic Projector & Reel projector in the Projection Room
- Water connection is available
- Stage is available and can be booked at the time of application submission

Transport Accessibility:

- Located on Temple Bar, between Eustace Street and Sycamore Street
- Parking available within walking distance



Parliament Street

Parliament Street was created in the early 1760s in order to open up a direct route to Dublin Castle with retail buildings on either side. In July 2025, the street transformed into traffic-free, making it a perfect space for markets, craft fairs or family fun days. Currently dominated by pedestrians, with up to 23,000 people passing through the street a day. The proposed measure plans to permanently reallocate the space to walking and cycling whilst also providing greening and public seating.

Area:

- 80 meters x 5 meters (Approx.). Total area of approximately 400 Sq meters

Transport Accessibility:

- Located on Dublin's Southside. It starts where Dame Street meets Cork Hill and goes north until it reaches Essex Quay and Wellington Quay. From there, it leads straight onto Grattan Bridge and then continues to Capel Street.



Smithfield Square

Created as a bustling cultural quarter, Smithfield Square is an up-and-coming area on Dublin's Northside. Large, cobblestoned plaza on the north side of Dublin City Centre. Bordered on the South by the Luas Line and on the North by North King Street

Retractable bollards at the north entrance of the Plaza are used to manage access, enhance security, and control traffic flow. Keys for operating the bollards are available in the Events Section office.

The Square is suitable for promotions, markets or events up to 7,000 persons.

Area:

- 278 meters x 37 meters (Approx).
- 10,286 Sq meters

Underground Services:

- Retractable Water and Electrical outlets are available on the Plaza on request

Transport Accessibility:

- Smithfield Plaza is pedestrianized, access is via Haymarket (off Queens St.) or Church St. (off Bow St.) or Friary Avenue (off Bow St.).
- Emergency vehicle access is from North King Street or Haymarket. These access points must never be blocked



South King Street

Long, narrow street in Dublin City Centre bordered on the East by St. Stephen's Green and on the west by Lower Mercer Street. A very busy pedestrian street with St. Stephen's Green Shopping centre on one side and the Gaiety Theatre on the other.

The area is well-suited for small-scale promotions or activations, with infrastructure limited to a maximum size of 3x3 metres. Please note that vehicles are not permitted on South King Street for any events or promotional activities.

Area:

- 28 meters x 13 meters (Approx.)
- 364 Sq meters (Approx.)
- Promotional activities are allowed only at the Mercer Street end, behind the bollards near the Luke Kelly statue and granite benches

Transport Accessibility:

Parking is available at St. Stephen's Green Shopping Centre and Drury Street. Bus & Luas to St. Stephen's Green



Temple Bar Square

Temple Bar is home to approximately 2,000 residents and welcomes up to 22 million pedestrians annually—an average of 60,000 per day. It's an ideal location for hosting food markets, craft fairs, book stalls, and live music performances

Area:

- 35 meters x 35 meters (Approx.). 1,000 Sq meters

Transport Accessibility:

- Temple Bar Square is fully pedestrianized, bordered on one side by Temple Bar, Crown Alley to the west and Fownes Street Upper to the east



Wolfe Tone Square

The park occupies the former graveyard of St. Mary's Church and is named after Theobald Wolfe Tone, who was baptized there. It is also notable as the site where Arthur Guinness was married in 1793. The site was converted from sacred use in 1966 and transformed into a green park. Between 1998 and 2000, Dublin City Council redeveloped the area as an urban plaza, with further regeneration works carried out in late 2020.

Due to limited parking, the space is not suitable for large scale events. Events of up to 1,500 persons may be feasible only if transport and parking issues are addressed. Events of up to 600 are easily achievable with minimum impact on local residents, for example family fun days, small concert performances, small theatre performances, markets or craft fairs.

Area:

- 50 meters x 29 meters (Approx.).
- 1,450 Sq meters (Approx.)

Transport Accessibility:

- Bounded by Mary Street to the north, Jervis Street to the east and Wolfe Tone Street to the west
- Multistorey carpark is located on Jervis Street
- Luas stop at Jervis is 50 meters away

Contact: parkevents@dublincity.ie



Wood Quay Amphitheatre

Nestled between Fishamble Street and Winetavern Street, in the shadow of DCC Civic Offices, this charming tiered, semi-circular stone amphitheatre offers a unique open-air setting. It comfortably seats up to 350 guests, with additional standing space for approximately 1,200 attendees. While not suitable for large-scale productions, the venue is perfect for intimate and community-focused events such as family fun days, craft fairs, local markets, small concert performance or small theatre performances

Area:

- 35 meters x 35 meters (Approx.). 1,225 Sq meters including steps, aisles and playing area.
- The centre Diaz has a diameter of 8 meters

Underground Services:

- Electrical supply at the Diaz. 63 amp & 16 amp. Check with DCC electrician prior to use.
- A local water supply is also available

Transport Accessibility:

- On street parking is available on cook Street and the Quas. Buses to Wellington Quay or Dame Street

Contact: events@dublincity.ie

