



Comhairle Cathrach
Bhaile Átha Cliath
Dublin City Council

Delivering Public Realm for Dublin City

Enhancing Streets, Spaces,
and Sustainability for All





Our Commitment to a Connected, Inclusive, Greener Dublin

Dublin City Council is reshaping the city's public realm with a focus on walkability, sustainability, accessibility, and heritage. Through collaboration with designers, communities and businesses, we are turning streets into places for people. This brochure showcases some flagship projects in the heart of the city that reflect our ambition and dedication to place-making.



Public Realm Vision & Goals

We are not just improving streets; we are building community and resilience into the heart of the city

Universal Access & Social Inclusion

Streets designed for everyone to enjoy - through thoughtful, barrier-free design.

Promoting Economic Growth

Well-designed streets and public spaces attract people, encourage local spending, support small businesses, and create conditions where the local economy can flourish.

Sustainability & Climate Action

Climate resilience measures including SuDS, greening & biodiversity. Prioritising waste reduction, recycling and responsible material use throughout the construction process.

Innovation & Engineering Excellence

Blending modern urban engineering with Dublin's historic streetscape, to preserve and enhance the fabric of the city.

Dwell, Quiet & Social Zones

Spaces that support mental well-being, cultural exchange, and socio-economic vitality. Supporting the UN Sustainable Development Goals, including:



SDG 3 (Good Health and Well-being)

Prioritizing accessible healthcare, green spaces, clean air, and active transportation to promote healthier lifestyles in public spaces.



SDG 11 (Sustainable Cities and Communities)

Well-designed public realm fosters inclusive, safe, and resilient communities by integrating affordable housing, efficient transit, and public amenities.



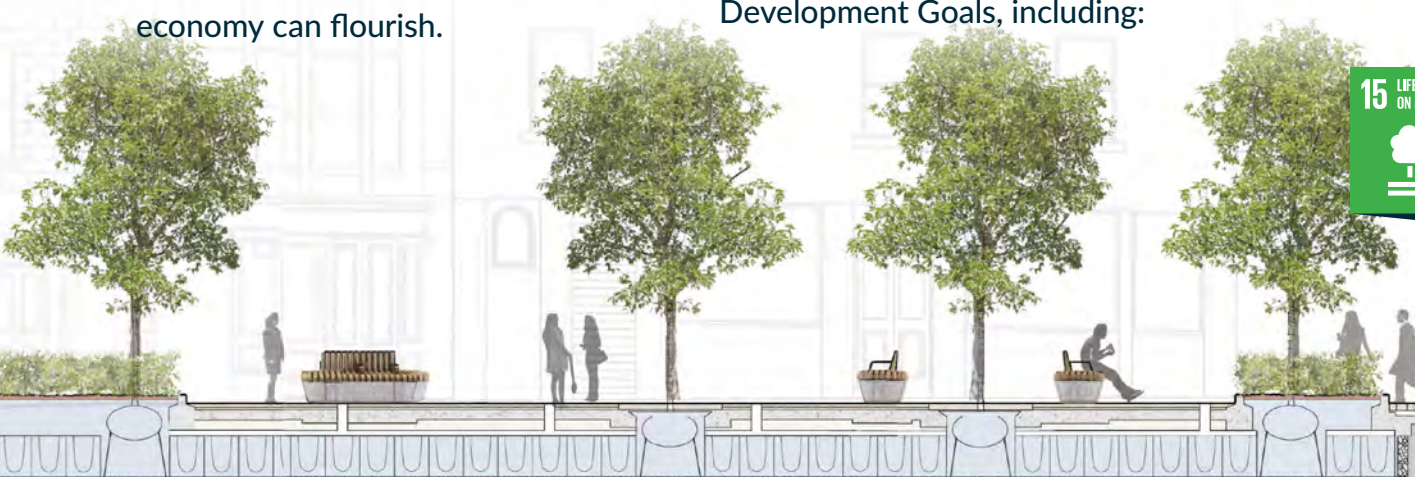
SDG 13 (Climate Action)

Cities must design public infrastructure that reduces emissions, enhances climate resilience, and supports sustainable mobility and energy use.



SDG 15 (Life on Land)

Urban planning should conserve green areas, integrate biodiversity into cityscapes, and prevent urban sprawl from degrading natural ecosystems.





Chatham St, Clarendon St & Environs

A new rhythm for historic streets

These landmark projects have revitalised the area to the west of Grafton St, an area steeped in retail heritage, delivering on the ambition to create spaces that are safer, greener, and more inclusive, while preserving their rich character and supporting the local economy. Creating a network of attractive streets and spaces where pedestrians can walk with ease and enjoy a range of planned and unplanned activities, with opportunities to linger and celebrate the unique charm of Dublin's streets.



Revitalising historic streets with thoughtful design and lasting purpose

The project area included Chatham St, Balfe St, Harry St, Chatham Lane, Clarendon St and Clarendon Row, and spanned over 6,300sqm. Designed and delivered in-house by DCC's City Architects and Road Design & Construction Divisions, in partnership with DCC's Landscape Architects, the elegant design was developed with a holistic vision for the area, resulting in a cohesive unified streetscape that complements the surrounding characterful buildings.





This renewed public realm has become a vibrant, more liveable and welcoming pedestrian friendly space next to Dublin's retail core.



Key enhancements:

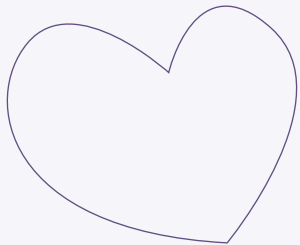
- Fully repaved with high-quality granite surface
- 23 new semi-mature trees with SuDS interventions on Chatham St
- Bespoke high quality public seating
- New public lighting system & watermain upgrades
- Widened footpaths for improved accessibility



Temple Bar Square

A new chapter for Dublin's cultural heart

Dublin City Council has reimaged Temple Bar Square and its surrounding streets to create a safer, more accessible and inclusive public space in one of the most iconic and visited areas of the city. The project enhances the quality, heritage and liveability of Dublin's Cultural Quarter for residents, visitors, and businesses alike.



The newly enhanced Temple Bar Square is more than a space: it's a stage for daily life, cultural expression, and future gatherings in the heart of Dublin.

From car park to cultural landmark

Once a surface car park, Temple Bar Square was transformed in the 1990s into a dynamic urban space at the heart of Dublin's revitalised Cultural Quarter. Today, the area is home to around 2,000 residents and sees up to 22 million visitors annually, with pedestrian volumes of 60,000 people per day.

The Public Realm Improvement Scheme builds on this legacy: elevating the public experience, improving accessibility, and reinforcing Temple Bar's identity as both a cultural destination and a functioning neighbourhood.



Key enhancements

- Fully repaved with high-quality granite surface
- 4 new trees
- Comfortable public seating on three sides of the square
- Art installation to reflect the cultural identity of Temple Bar
- Enhanced lighting system for both function and atmosphere, energy efficient
- Traditional cobbled carriageways restored
- Granite footpaths throughout
- Widened footpaths and removal of steps to improve accessibility

Liffey Street

Reconnecting Dublin's river, retail & heritage

Dublin City Council has delivered a transformative public realm project on Liffey Street: one of Dublin's most important north-south pedestrian links, bridging the iconic Ha'penny Bridge and the bustling Henry Street shopping district. The scheme reimagines Liffey Street as both a vital connection and a destination, creating a welcoming, accessible, and resilient urban street environment in the heart of the city centre.



A historic gateway, renewed

Liffey Street Upper and Lower span from Henry Street to the Liffey Quays, passing through a vibrant, historic streetscape that includes the Woollen Mills, Merchants Arch, and the famous Ha'penny Bridge. Though relatively modest in size, the street boasts a rich architectural and cultural legacy, recognised in numerous sites of regional importance in the National Inventory of Architectural Heritage.

The street's renewed identity honours the legacy of Dublin's riverfront and merchant past while creating a safe, green and inviting place for walking, cycling, and lingering.

A more inclusive, sustainable and attractive street

- Widened and repaved footpaths in high-quality granite
- Raised junctions and traffic calming measures
- A new pedestrian plaza south of Strand Street on Liffey Street Lower
- Improved safety for vulnerable users
- New watermains, public lighting and utility infrastructure
- Semi-mature street trees and landscaping throughout the scheme
- Elegant street furniture including benches, bollards, bike stands and bins
- Enhanced design continuity with adjacent ACAs (Architectural Conservation Areas)



The Liffey Street project delivers a safer, greener and more connected city centre street. Whether crossing from Temple Bar to Henry Street or enjoying the new plaza space by the River Liffey, residents and visitors now experience a transformed urban environment: designed for people, inspired by heritage, and built for the future.

Francis Street

Revitalising a historic corridor

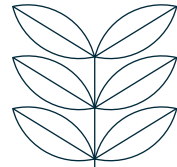
Dublin City Council has delivered a major transformation of Francis Street: one of the south inner city's most historic and culturally significant streets. This revitalisation project, located in the heart of The Liberties, enhances the pedestrian environment, supports sustainable transport, and celebrates the area's long-standing reputation for arts, antiques, and community spirit.

Spanning from Thomas Street to Dean Street, Francis Street is now greener, safer, and more accessible, with improved public spaces that support local life and honour the street's unique heritage.

Through thoughtful design and collaboration, the street has been transformed to better support residents, businesses, and visitors while contributing to the broader regeneration of The Liberties.



A street renewed...



Recognition & community impact

The Francis Street Environmental Improvement Scheme has been widely praised for its design excellence and community value:

- ULI Excellence in Place-Making Awards 2022: Highly Commended
- Public Satisfaction: 84%
- Business Satisfaction: 89%

Key improvements

The project introduced a wide range of enhancements that elevate Francis Street's character and functionality:

- Widened footpaths to create a more walkable, welcoming street
- Realigned carriageway and raised junctions to calm traffic
- On-street parking reconfigured via kerb buildouts to improve sightlines and safety
- Upgraded cycling facilities including contra-flow lanes
- Enhanced connectivity for active travel across the Liberties
- 19 new trees planted
- Improved planting and biodiversity features
- New street lighting and high-quality street furniture
- Benches, bike stands, and resting areas for public use



The revitalised street now offers a safer, more vibrant environment that supports local businesses, encourages walking and cycling, and strengthens the identity of The Liberties as a destination of cultural and historic richness.



A legacy for The Liberties

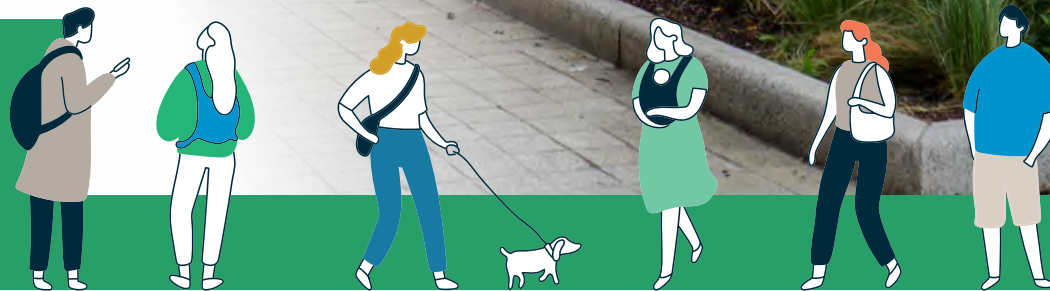
Francis Street now serves as a model for how Dublin's historic streets can evolve: sustainably and sensitively into more inclusive and dynamic urban spaces. By honouring the past while preparing for the future, this project reflects Dublin City Council's commitment to delivering a resilient and high-quality public realm for all.



A city designed for people

These schemes are just a snapshot of public realm improvement in the city, with many other projects under development. Each scheme makes Dublin more connected, inclusive, and sustainable. As we continue this work, we are committed to listening, adapting, and building a capital city that works for everyone.

WHAT'S NEXT:



Reimagining our historic streets and squares, preserving the cities heritage while adapting these spaces for modern urban life

Continued focus on green infrastructure, safety, and placemaking

Integration with active travel and public transport plans

For more information visit www.dublincity.ie

