



**Comhairle Cathrach
Bhaile Átha Cliath
Dublin City Council**

DUBLIN CITY COUNCIL CLIMATE ACTION PLAN 2024-2029



ANNUAL REPORT 2025

CONTENTS

| | |
|---|----|
| 1.0 Introduction | 6 |
| 2.0 Climate Action Plan: Climate Neutral Dublin 2030 Overview | 7 |
| 2.1 General | 8 |
| 2.2 Climate Action Summary Update 2025 | 8 |
| 2.2.1 A Resilient City | 9 |
| 2.2.2 A Resource-Full City | 9 |
| 2.2.3 A Creative City | 10 |
| 2.2.4 A Social City | 10 |
| 3.0 Energy & Buildings | 11 |
| 3.1 Dublin City Council Energy Performance 2024 | 13 |
| 3.2 Dublin City Council Greenhouse Gas Emissions Performance 2024 | 14 |
| 3.3 Social Housing Regeneration | 16 |
| 3.3.1 Constitution Hill | 16 |
| 3.3.2 Pearse House | 17 |
| 3.4 Public Building Regeneration | 18 |
| 3.4.1 Pathfinder Programme | 18 |
| 3.5 Dublin District Heating Project | 19 |
| 3.6 Public Lighting Upgrade Project (PLUP) | 20 |
| 3.7 Sustainable Energy Communities | 20 |
| 4.0 Flood Resilience | 21 |
| 4.1 Rainscapes | 23 |
| 4.2 Santry River Restoration | 23 |
| 4.3 Poddle Flood Alleviation Project | 23 |
| 4.4 Camac Flood Alleviation | 24 |
| 4.5 Dodder Phase 3 - Clonskeagh - Orwell Bridge | 24 |
| 5.0 Transport | 25 |
| 5.1 A Connected Active Travel Network | 27 |
| 5.2 Key projects completed in 2025 | 27 |
| 5.2.1 The Liffey Cycle Route | 27 |
| 5.2.2 Dodder Greenway Opening | 28 |
| 5.3 Community Engagement | 28 |

CONTENTS

| | |
|--|----|
| 6.0 Parks, Biodiversity & Landscape Services | 29 |
| 6.1 Dublin Bay UNESCO Biosphere | 31 |
| 6.1.1 Habitat Restoration Meitheal | 32 |
| 6.1.2 Tenth Anniversary Dublin Bay Biosphere | 32 |
| 6.1.3 Biodiversity Conservation and Research Subcommittee | 33 |
| 7.0 Circular Economy & Resource Management | 35 |
| 7.1 Ecosystem of Social and Circular Enterprises | 36 |
| 7.2 Waste Management | 36 |
| 8.0 Community Engagement | 37 |
| 8.1 Eat the Streets | 39 |
| 8.2 Community Hubs | 39 |
| 8.2.1 Parnell Square Cultural Quarter | 39 |
| 8.3 Networks for Knowledge Exchange | 40 |
| 8.4 Innovation Districts - Resilient North-East Inner City | 40 |
| 8.4.1 Resilient North-East Inner City | 40 |
| 8.5 Active Travel | 41 |
| 8.6 Neighbourhoods at the Heart | 41 |
| 8.6.1 Dublin Climate Action Week 2025 | 41 |
| 9.0 Operations and Service Delivery Climate Action | 42 |
| 9.1 Climate Actions - Our Staff | 43 |
| 9.2 Climate Actions - Our Buildings | 43 |
| 9.3 Climate Actions - Our Operations and Services | 44 |
| 9.4 Climate Actions - Our Engagement Activities & Partnerships | 44 |
| 10.0 Community Climate Action Programme | 48 |
| 10.1 Community Climate Action Programme | 50 |
| 10.2 Killester Blooms | 53 |
| 10.3 Kingfisher Community Garden | 54 |
| 10.4 Doras Buí | 55 |
| 10.5 TOG Hackerspace | 56 |
| 10.6 CLG Na Fianna | 57 |

CONTENTS

| | |
|---|----|
| 11.0 Governance and the Public Realm | 58 |
| 11.1 Climate-Neutral & Smart City | 59 |
| 11.2 Build Capa-Cities | 60 |
| 11.3 Climate Action Team and Governance | 61 |
| 11.4 Climate Support to Dublin City Council | 61 |
| 11.4.1 Climate Action Regional Office | 61 |
| 11.4.2 Codema | 62 |
| 11.5 Decarbonisation Zones | 63 |
| 11.6 Quiet Areas | 64 |
| 11.7 City Centre Public Realm | 64 |
| 11.8 Laneways of Dublin 1 and Dublin 2 | 64 |
| 11.9 Vibrant Streets | 65 |
| 12.0 European Projects | 66 |
| 12.1 Urban Agenda for the EU - Thematic Partnership on Food (2024-27) | 67 |
| 12.2 CULTIVATE (2023-27) | 68 |
| 12.3 EURADAPT | 69 |
| 12.3 EUREKA | 70 |
| Appendix 1 – Climate Action Plan Action Status | 71 |
| Appendix 2 - Policy Updates 2025 | 78 |

INFOGRAPHICS INDEX

| | |
|---|----|
| Energy and Buildings | 12 |
| Flood Resilience | 22 |
| Active Travel Highlights 2025 | 26 |
| Parks, Biodiversity and Landscape Services - Capital Projects Monitor | 30 |
| Dublin Bay Biosphere Research and Conservation | 33 |
| Local Biodiversity Actions NPWS | 34 |
| Dublin Climate Action Week | 38 |
| North-East Inner City Activities 2025 | 40 |
| Sustainable Travel and Air Quality | 45 |
| Energy and Buildings | 45 |
| Sustainable Travel - Bike Bunker & Bike Sharing | 46 |
| Community - Dublin City Neighbourhood Awards | 46 |
| Community - Local Enhancement Programme | 47 |
| Circular Economy - Modos | 47 |
| Community Climate Action Programme | 49 |
| Community Climate Action Programme - Community Energy | 50 |
| Community Climate Action Programme - Growing Food | 51 |
| Community Climate Action Programme - Growing Nature | 51 |
| Community Climate Action Programme - Sustainable Travel | 52 |

1.0 INTRODUCTION

This report, Climate Neutral Dublin Annual Report 2025, (the Report) provides an overview of climate action taken directly by Dublin City Council (DCC) in 2025 and how that action has influenced our community and other stakeholders. Dublin City Council's action plan: Climate Neutral Dublin 2030, (the Plan) is the statutory document acting as a compass for all of our climate action work.

The Plan contains five main chapters known as the Foundations of Our Vision:

1. Foundation 1: A Resilient City.
2. Foundation 2: A Resource-Full City.
3. Foundation 3: A Creative City.
4. Foundation 4: A Social City, and
5. Operations and Service Delivery Actions

Appendix 1 of this report lists the status of climate actions contained in climate action plan - Climate Neutral Dublin 2030.



2.0 CLIMATE ACTION PLAN: CLIMATE NEUTRAL DUBLIN 2030 OVERVIEW



2.1 General

Dublin City Council's climate action plan, Climate Neutral Dublin 2030, (the Plan) was adopted by the Elected Members of DCC in March 2024 and sets out the actions that will be taken to achieve our climate action targets. This annual report summarises the progress in the second calendar year of implementation.

The Plan has the following three targets that are interdependent.

- A 51% reduction in greenhouse gas emissions by 2030, in line with the National Climate Objective, while striving for neutrality before 2050, as per Dublin City's participation in the EU Mission for 100 Climate Neutral and Smart Cities (Net Zero Cities).
- A Climate Resilient City prepared for the known and unknown impacts of climate change.
- A Just Transition meaning that the actions we take do not cause harm.

2.2 Climate Action Summary Update 2025



Status of Climate Actions

The Council's Climate Action Plan – Climate Neutral Dublin 2030 contains 121 climate actions for the Council to implement. The graphic above provides a summary of the status of those actions for the reporting period 2025.

A sample of some climate action highlights carried out in 2025 are summarised in the chapters of this report.

Note: Many of the actions of the Climate Action Plan repeat annually and therefore, when the work for the reporting year is completed those actions are recorded as complete. This applies for progress charts throughout this report.

The Plan is based around four foundations as follows:

2.2.1 A Resilient City

Dublin is a city that has survived battles and recessions and always come back stronger and more resilient through the tenacity and inventiveness of its people. Climate change presents us all with a new challenge that we will meet head on to ensure that Dublin thrives into the future, taking actions now that will protect our buildings, roads, energy & communication networks and our food supply.

1. Status of Resilient City Actions



2.2.2 A Resource-Full City

Dublin has an abundance of natural resources with its coastline, rivers and green spaces, including the Phoenix Park – Europe’s largest urban park at 707 hectares and this plan sets out our plans to preserve what we have and increase the biodiversity of the city.

2. Status of Resource-Full City Actions



2.2.3 A Creative City

Dublin has always been a city of poets, writers, musicians and artists that have enhanced our understanding of ourselves, the world and how we relate to it. This creative spirit will be an integral part of how we address the challenges that climate change brings to the city.

3. Status of Creative City Actions



2.2.4 A Social City

The people of Dublin are its greatest resource, and it is key that we continue to create safe and comfortable spaces for people to come together. We are continually reimagining the city in a way that prioritises the pedestrian and the cyclist. Where once we had barges moving up and down the canals, now every morning we see cyclists making their way into the city along the routes on the banks of the canals.

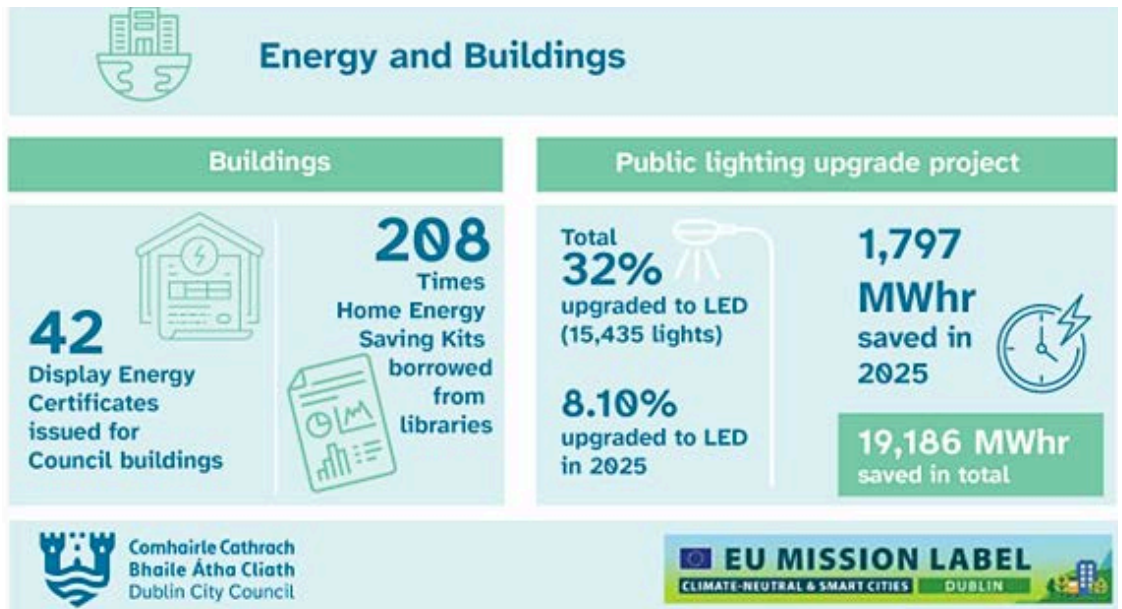
4. Status of Social City Actions



3.0 ENERGY & BUILDINGS



The following infographic provides a summary of some of the climate actions taken by Dublin City Council around the themes of energy and buildings. There is more information on these themes in the **Operations and Services** section of the report.



3.1 Dublin City Council Energy Performance 2024

This annual report details the energy efficiency performance and greenhouse gas emissions reduction for Dublin City Council (DCC) as an organisation up to 2024. The data for 2025 is currently being collated.

In 2024, DCC consumed 97.9 Gigawatt hours (GWh) of Total Final Consumption (TFC) energy with an estimated cost of approximately €17.84 million. This consumption is associated with the release of 24,196 tonnes of CO₂. Dublin City Council inputs this data into the Sustainable Energy Authority of Ireland (SEAI)'s Monitoring & Reporting (M&R) system annually since 2006, in order to comply with the reporting requirements of the European Energy Efficiency Directive 2012/27/EU. The Directive has been transposed into Irish Law as S.I. 426 of 2014, which sets out several obligations on public bodies with respect to their "exemplary role" for energy performance including achieving a 33% improvement in energy efficiency by 2020. This was targeted by setting an average energy performance improvement goal of 3% per year, based on Total Primary Energy Requirement (TPER) and using an organisational Energy Performance Indicator (EnPi), rather than Total Final Consumption (TFC).

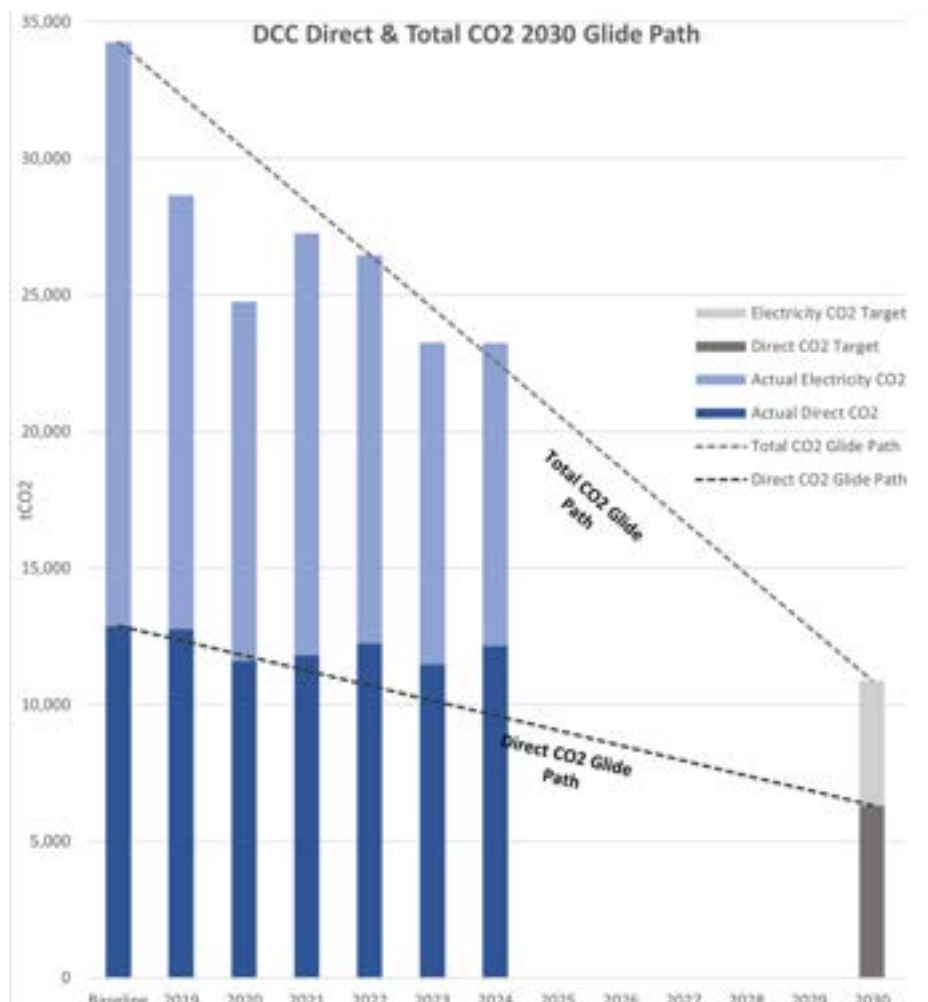
Subsequent to the 2020 milestone, a new target of 50% energy efficiency for 2030 has been set, as outlined in the Government's 2023 Climate Action Plan. The glidepath to 2030 is presented in the graph below and represents a 2.27% annual improvement in energy performance to 2030.



As of 2024, from an SEAI M&R perspective, DCC has improved its energy efficiency by 42.6%, compared to the baseline year when adjusting for the increasing population served. Many facilities, including Civic Offices, Leisure Centres and Libraries, were closed to the public or operating at reduced capacity for significant portions of 2020 and 2021. In 2023 facilities returned to previous activity levels and an improvement in energy efficiency is observed.

3.2 Dublin City Council Greenhouse Gas Emissions Performance 2024

As part of the SEAI's new 2030 M&R System, a statutory Green House Gas (GHG) emissions target must now be met by public bodies in addition to the pre-existing energy efficiency target. The 2021 Government Climate Action Plan has set a 51% absolute reduction in energy-related GHG emissions, based on a 2016-2018 average baseline. The SEAI has decided to implement this as a 51% reduction in direct GHG emissions from transport and thermal fuels. Indirect GHG emissions related to electricity have been excluded from this target, as they are already expected to fall by at least 77.4% due to the high level of decarbonisation of the national grid supply by 2030.





Compared to the baseline, DCC's annual thermal and transport GHG emissions in 2024 had been reduced by 5.7%, as plotted in the previous graph. This leaves 5,842 tonnes of CO₂-equivalent to be reduced between now and 2030. The Council's plans to upgrade its significant energy using buildings such as leisure centres and decarbonising its vehicle fleet will be key to achieving the emission target.

3.3 Social Housing Regeneration

Housing regeneration typically addresses the following retrofitting options:

Deep Retrofitting: The Council is using digital twin technology to model the most effective energy upgrades, selecting "Deep Retrofit" (60%-90% reduction) to optimize the whole-life carbon of older flat complexes.

Fabric Upgrades: Eight thousand houses have been insulated since 2013 with a further 2,000 houses now fully retrofitted which includes insulation, window/door replacements, heating controls, LED lighting, solar PV, and heat pumps where applicable.

Target Standards: The Council targets a Building Energy Rating (BER) of **B2** for social housing, aligning with National Housing For All targets.

The following projects are examples of housing regeneration projects that were progressed in 2025

3.3.1 Constitution Hill



There are two phases to this project; a hybrid of retrofit to existing buildings and a new build phase, with Part 8 planning approved for both phases. There are currently 89 flats, and the project will deliver 124 new homes when complete.

Phase 1 encompasses the retrofit and extension of an existing block and the construction of a new apartment block to deliver 46 new homes. Works commenced onsite in August 2025 and is due to be completed by April 2027.

Phase 2 encompasses the retrofit and extension of two existing blocks and the construction of a new apartment block and mews homes to deliver 78 new homes with phase 2 to commence upon completion of Phase 1.

3.3.2 Pearse House



Pearse House contains 346 flats in the estate and is a protected structure. Phase 1 plans for the regeneration of flat Blocks L, M, N & P, known as small flats, which currently consists of 78 units. Funding is based on a minimum intervention to existing blocks, and the design team are reviewing the proposed strategy with the aim of maintaining the current number of unit numbers in the regenerated scheme.

Council Unit Upgrades

The Council upgraded 316 Council units with a total upgrade value of €13.1 million. These upgrades improved the comfort of the homes. Most of the Building Energy Rating (BER) upgrades were to A3 and B1; a total of 190 units, 68 units were upgraded to B2, 50 to B3 and 7 to C1 BER

3.4 Public Building Regeneration

3.4.1 Pathfinder Programme

Dublin City Council is the lead local authority for the Dublin region in the Pathfinder Programme, a national initiative designed to fast-track demonstration climate-action projects. As part of this role, the Council manages the financial drawdown from the Sustainable Energy Authority of Ireland on behalf of the four Dublin local authorities. In December 2025, a drawdown of €4,838,295 was processed, with the funds scheduled for redistribution to the Dublin Local Authorities in 2026. The Pathfinder Programme provides 50% of funding for energy retrofits.

Dublin City Council are preparing the procurement documents to progress the building retrofit works to the Ballymun Leisure Centre, Finglas Leisure Centre, Ballyfermot Leisure Centre, Ballyfermot Civic Offices and Swan Leisure Centre in 2026 to a value of approximately €9M. The City Council will also progress the Fire Station retrofit works for inclusion in the 2026/2027 public building regeneration programme.



Ballyfermot Leisure Centre

3.5 Dublin District Heating Project

The Dublin District Heating Project (DDHP) aims to capture waste heat from the Dublin Waste to Energy facility and supply homes and businesses through an underground pipeline network. Preliminary design of the network for the pre-Part 8 planning process was completed in 2025, and the pre-Part 8 procedure commenced in December. Wintering bird surveys began at Ringsend Park, with findings to be included in the Part 8 planning submission. Preliminary design and environmental assessment work for the proposed Energy Centre is ongoing and detailed design and tender documents for the Dodder tunnel eastern shaft pipe works were completed. The preliminary business case was approved by the Department of Climate, Energy and Environment, achieving Approval Gate 1. The district heating water pipes (see below) were installed through the Central Boulevard of the Irish Glass Bottle (IGB) site which means this stretch of the hot water distribution network is now in place.



Hot water piping network installed at Irish Glass Bottle Site

3.6 Public Lighting Upgrade Project (PLUP)

The adaptation of LED technology contributes significantly towards the Council's green transition goals and energy reduction strategy. The project, upon completion, will result in energy savings in excess of 50%, and will have the environmental benefit of a reduced carbon footprint yielding positive outcomes with regards to health, and increased economic and institutional resilience. The climate benefit of the project is achieved with the replacement of up to 40,000 luminaires (lights) with energy efficient LED luminaires with smart technology included to monitor use and efficiency.

The works commenced in early 2023, and four construction contracts have been executed in that timeframe. To date the project has completed the installation of circa 10,000 lantern upgrades to LED technology saving circa 2.5GWh of energy. This represents 32% of the total number of public lights.

In 2026, further new works contracts will be executed for the next phase of the project, which involves the installation of circa 5,000 lantern upgrades to LED technology, and the replacement of circa 700 end of life public lighting columns within the city.

3.7 Sustainable Energy Communities

Since 2018 a total of 72 Sustainable Energy Communities (SEC) have been established in the DCC administrative area, with 11 communities joining in 2025. An SEC is a group of people working together locally to use energy responsibly

and sustainably for the benefit of their community. SEC's promote energy efficiency, renewable energy, and smart energy solutions and are supported by a locally based experienced community mentor who provides advice and resources to help communities develop and deliver their plans.



Looking forward, Dublin City Council will provide bridging financial support for up to three Sustainable Energy Communities (SEC) in 2026. Commitments to support have been issued to Donore Avenue SEC, Sandymount and Merrion SEC and Iveagh Gardens SEC. The Dublin local authorities are currently preparing a regional framework for engagement of energy consultants to complete SEC energy masterplans (EMPs). SEC's will then be able to engage energy consultants to prepare an energy master plan.

4.0 FLOOD RESILIENCE



The following infographic provides a summary of some of the flood resilience climate actions taken by Dublin City Council in 2025.



4.1 Rainscapes

The first phase of the Rainscapes project was completed in July 2025 with further phases of the project due for delivery in 2026-27.

Located in the Harmonstown area of North Dublin City, this project delivers sustainable drainage systems (SUDS) to residential areas at risk of flooding, as well as improving water quality, benefitting the Santry River, enhancing biodiversity and improving the amenity value of our public streets.

In September 2025, Dublin City Council undertook another round of public engagement sharing preliminary designs for Nature Based Solutions interventions for the Golden Lane and Violet Hill areas. The Violet Hill design is moving to construction tender early in 2026 with the Golden Lane proposal due for a Part 8 submission, with detailed design expected to run in parallel.

4.2 Santry River Restoration

Santry River restoration project is at design stage, flood alleviation plans for Raheny Village are quite advanced with a view to making a planning submission in 2026 and construction in 2027 – subject to planning permission. The scheme comprises a combination of traditional hard engineered flood defences nature-based solutions, daylighting and an active travel route.



4.3 Poddle Flood Alleviation Project

South Dublin County Council (SDCC) are the lead authority for this project. An Bord Pleanála granted approval for the proposals in June 2023. Construction started in Tymon Park on 6th February 2024. The construction period is estimated at 2-3 years. In Dublin City Council's functional area there are flood defences proposed in Ravensdale Park, St. Martin's Drive and Mount Argus. An information meeting was held with local residents regarding proposed construction in Ravensdale Park in February 2025.

4.4 Camac Flood Alleviation

Computer flood modelling of catchment scenarios is ongoing, including associated flood damages assessments, see website www.camacfas.ie. Environmental surveys have revealed more significant flora and fauna in and beside the river than previously recorded. Meetings with major stakeholders are also ongoing. Public consultations were held in early 2025 on the emerging preferred option.

4.5 Dodder Phase 3- Clonskeagh- Orwell Bridge

Environmental and topographical surveys are completed. Computer flood modelling is ongoing, see www.floodinfo.ie/frs/en/dodder-3/home. Initial flood options are being considered and costed. Liaison with LA stakeholders on preliminary options is ongoing.



5.0 TRANSPORT

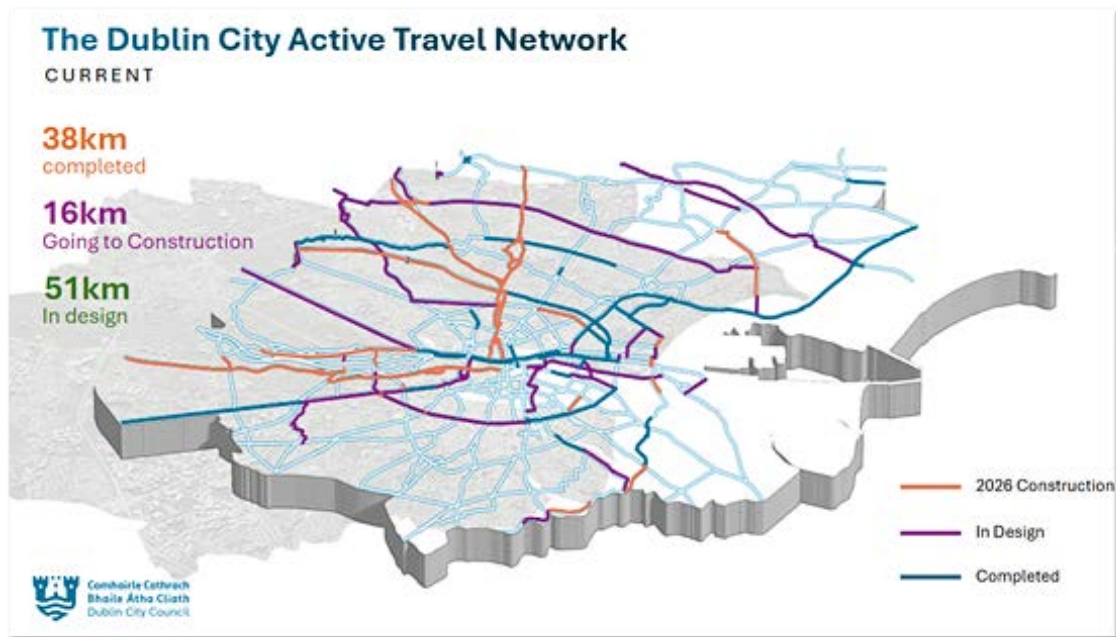


This infographic highlights key actions undertaken by the Active Travel Team in 2025.



5.1 A Connected Active Travel Network

The following image illustrates the current status of the Dublin City Active Travel Network.



The Active Travel Programme Office has a clearly defined priority of works with the network growing to circa 38km with a further 16km under construction, and design activity progressing for an additional 51km of the network.

5.2 Key Projects Completed in 2025

5.2.1 The Liffey Cycle Route

The Liffey Cycle Route (Georges Quay to Aston Quay) officially opened in February, 2025, creating a new two-way cycle track from George's Quay to Burgh Quay located on the river side of the quays and a new one-way cycle track on Aston Quay located on the river side of the quay. Phase 3 of the Royal Canal Greenway, a 2.1km walking and cycling route from North Strand Road (Newcomen Bridge) to Phibsborough Road (Cross Guns Bridge), was officially launched on September 26, 2025. This key urban project connects to existing routes to provide a safe, fully segregated corridor through the city.



5.2.2 Dodder Greenway Opening

The Beatty's Avenue to Herbert Park section of the Dodder Greenway was completed in September 2025, a 0.5km section connecting two segments of the Dodder, previously severed by heavily trafficked road network. The Dodder Greenway is being delivered in phases by DCC, in collaboration with Dún Laoghaire-Rathdown and South Dublin County Councils. Once complete, the route will link Sir John Rogerson's Quay in the city centre to Glenasmole near the Bohernabreena reservoirs.



5.3 Community Engagement

Community engagements were undertaken in the South City Loop – National Children’s Hospital, Kimmage Road to Whitehall Road Junction and North Circular Road schemes, Portland Place Square (North Circular Road Active Travel Route), Beatty’s Avenue to Herbert Park section of the Dodder Greenway and the Royal Canal Greenway Phase 3, North Strand Road to Phibsborough Road. Five Child Led workshops for Dublin, Let’s Move Project, Sherriff Street Lower, were also held.

Additionally, the SC2C (Sandyford/Clonskeagh to Charlemont Street) – Ranelagh Village – Interim Scheme, was completed in July as part of the Trinity to Ballsbridge scheme, the existing 0.32km contra-flow cycle track between the Clare Street and Dawson Street junctions was upgraded. Dublin City Council’s “Be Sound” communications campaign reminds all road users to be respectful of each other and to prioritise safety when driving, walking, wheeling or cycling on the city’s streets.

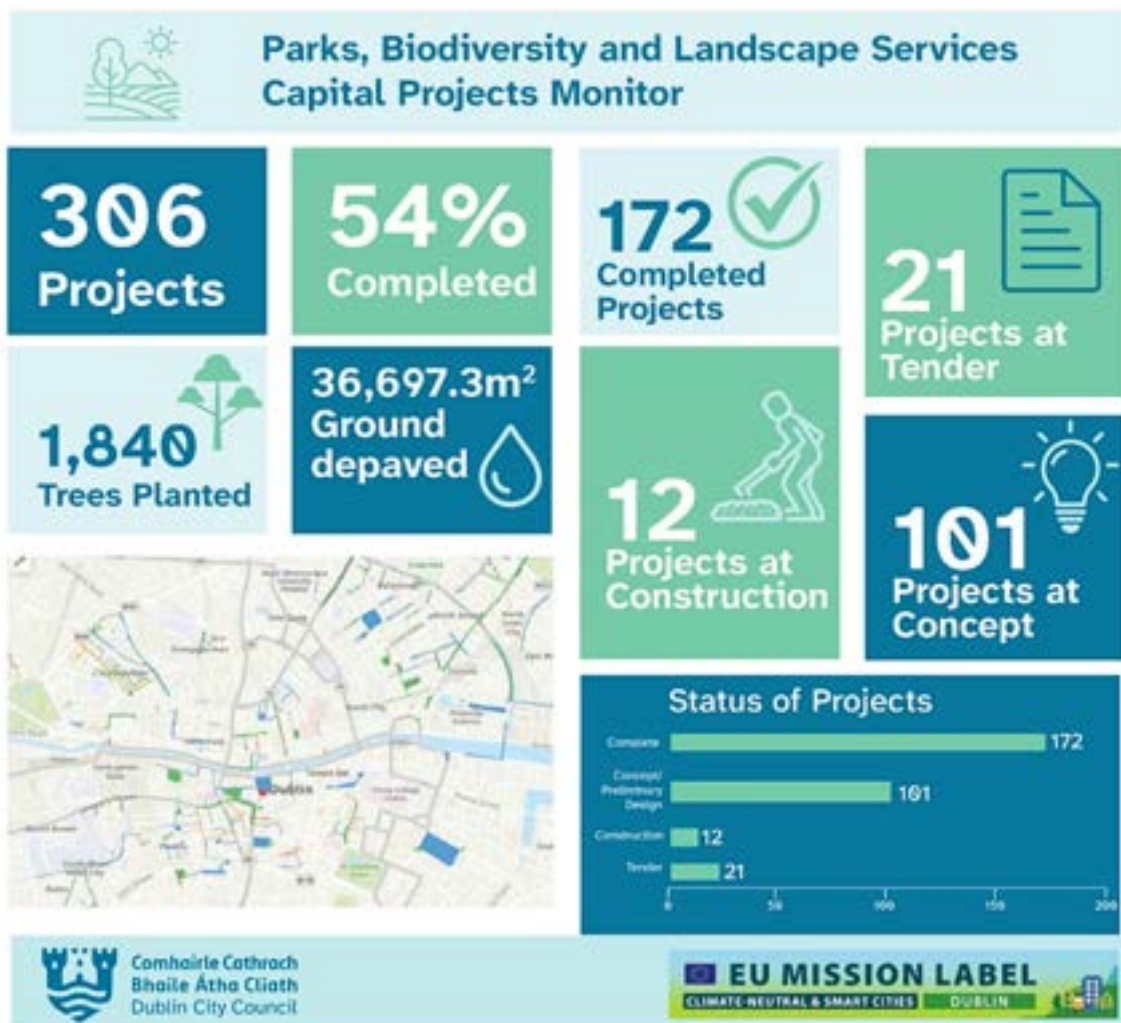


Public consultations were published on the Dodder Greenway, North Circular Road and McKenzie Avenue roundabout and the updated design for the Suir Road Junction Upgrade. Non-statutory Public Consultations on the Kimmage Road/Whitehall Road Junction, St Margaret’s Road/McKee Avenue Roundabout Pedestrian Improvement Scheme and National Children’s Hospital Junction Upgrade were also undertaken.

6.0 PARKS, BIODIVERSITY & LANDSCAPE SERVICES



The following infographics highlight the capital projects and other work carried out by Parks, Biodiversity and Landscape Services in 2025.



6.1 Dublin Bay UNESCO Biosphere

Biospheres are places where nature and culture connect. They are internationally recognised for their biological diversity yet also actively managed to promote a balanced relationship between people and nature. A biosphere is a special designation awarded by the United Nations Educational, Scientific and Cultural Organisation (UNESCO) but managed in partnership by communities, NGOs and local and national governments.

Dublin Bay Biosphere contains three different zones, which are managed in different ways (see map):

- The core zone of Dublin Bay Biosphere comprises 50km² of areas of high natural value, including SPA's (Special Protected Areas) and SAC's (Special Area's of Conservation).
- The buffer zone comprises 82km² of public and private green spaces such as parks, greenbelts and golf courses, which surround and adjoin the core zones.
- The transition zone comprises 173km² and forms the outer part of the Biosphere. It includes residential areas, harbours, ports and industrial and commercial areas.



6.1.1 Habitat Restoration Meitheal (October)

A pilot Conservation project - Meitheal, took place on North Bull Island in October 2025, delivered in partnership with Clean Coasts, the North Bull

Island Volunteers and Conservation Rangers and the Climate Ambassadors Programme as part of An Taisce's Climate Action Week.. Over the two days, 50 volunteers took part in the initiative, collectively removing 35 one-tonne bags of fruiting Sea Buckthorn from the site.



The project proved highly successful, both in terms of ecological impact and community engagement, and a Biosphere Habitat Restoration Meitheal is now being proposed as a regular component of the DBBP Education and Communication Programme.

6.1.2 Tenth Anniversary Dublin Bay Biosphere Councillors Cruise (12 June)



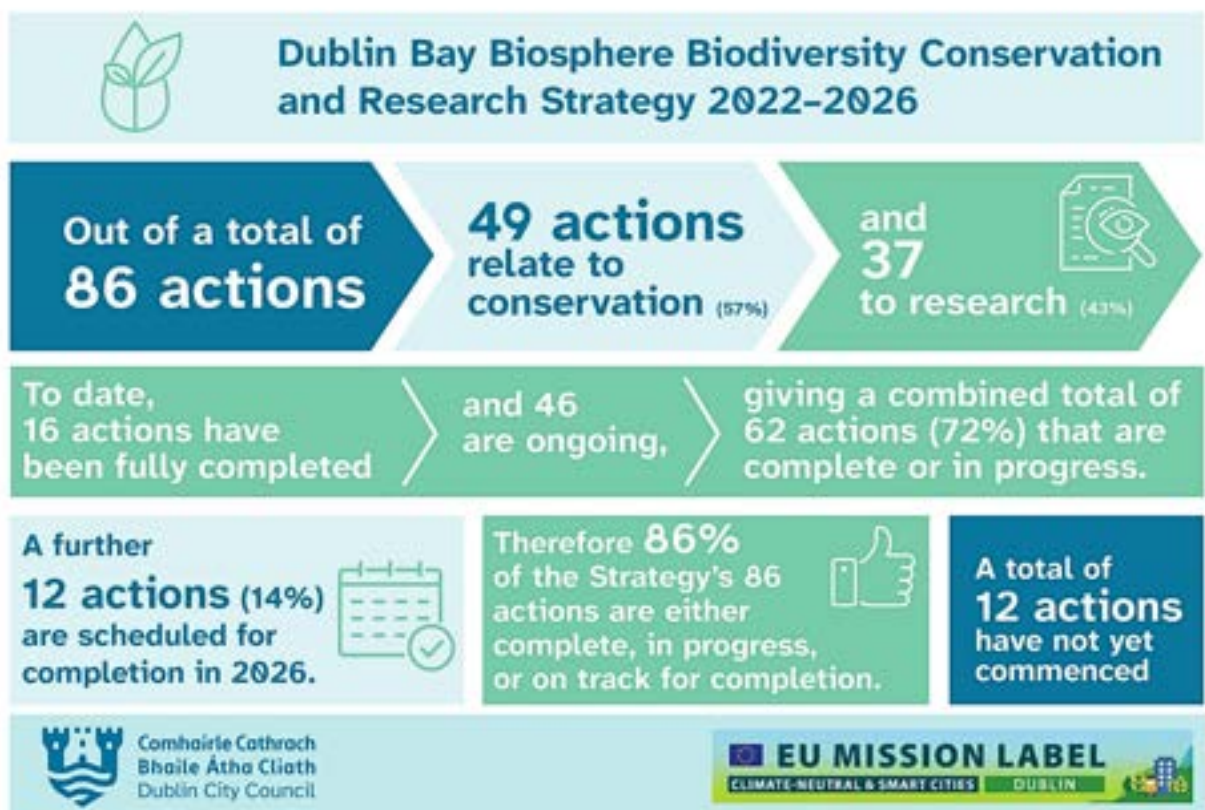
The landmark outreach event of the year was the 10th Anniversary Dublin Bay Biosphere Cruise held in June 2025, with nearly 90 stakeholders in attendance including local TDs, Councillors from across Dublin and representatives from wide variety of organisations.

6.1.3 Biodiversity Conservation & Research Subcommittee

The Biodiversity Conservation and Research Subcommittee met twice in 2025 with the aim of reviewing and quantitatively assessing the progress of the DBB Biodiversity Conservation and Research Strategy 2022–2026. The review shows strong progress toward delivery of the plan’s objectives and demonstrates:

- Out of a total of 86 actions, 49 actions relate to conservation (57%) and 37 to research (43%).
- To date, 16 actions have been fully completed and 46 are ongoing, giving a combined total of 62 actions (72%) that are complete or in progress.
- A further 12 actions (14%) are scheduled for completion in 2026.
- Therefore 86% of the Strategy’s 86 actions are either complete, in progress, or on track for completion.
- A total of 12 actions have not yet commenced due to lack of funding or pending appointment of a Marine Biodiversity Officer.

The following infographic summarises the work carried out in relation to the Dublin biosphere.



6.1.3 Biodiversity Conservation & Research Subcommittee

A total of nine Projects supported by Local Biodiversity Action Funded Grants via National Parks and Wildlife Service (NPWS) and within DCC administrative area, were carried out between April - November 2025.



Local Biodiversity Actions Funded Grants via National Parks and Wildlife Service

- 2** Projects on Invasive species control at Tolka Valley and North Bull Island
- 2** Projects with BirdWatch Ireland on Swifts in the City and Raptors in the City 19
- Projects with Irish Midlands Ringing Group on Swan Ringing, Survey and Data analysis and Surveying and Ringing of bird species on Bull Island and Tolka Valley
- A Mayfly Monitoring Project with UCD and all county councils to establish the conservation status of Mayflies in Ireland in freshwater habitats
- A Dublin City Otter Population Survey including genetic and dietary analysis to monitor otter populations and their diet in urban river systems
- A Biodiversity Awareness Education Programme and field trip to Bull Island with Global Action Plan to **140 students across 4 schools in Dublin**

Comhairle Cathrach Bhaile Átha Cliath Dublin City Council

EU MISSION LABEL
CLIMATE-NEUTRAL & SMART CITIES DUBLIN



7.0 CIRCULAR ECONOMY & RESOURCE MANAGEMENT



7.1 Ecosystem of Social and Circular Enterprises

Support was provided to Inner City Enterprise (ICE) for business development work with their network of enterprises through the Hub on the Hill. The former DCC depot on Constitution Hill was transformed into a progressive hub providing supports for social and circular enterprises.

The City Council also collaborated on the delivery of the Dublin City Social Enterprise Awards with ICE and supported the Rediscovery Centre as the national centre for the circular economy.



The Celebrating Circular digital publication and online story collection, curated by DCC and the Regional Waste Management Planning Offices, was launched at Dublin City Hall as part of Dublin Climate Action Week 2025 to raise awareness about sustainability and inspire climate action within the business community. The initiative spotlighted trailblazer Irish businesses making strides towards a more sustainable and low-carbon economy.

7.2 Waste Management



Substantial progress was made on Dublin City Council's 3 Pillar Waste Management Strategy in 2025. New waste compactors were installed on Fownes Street Upper and St. Stephens Green in partnership with the waste collectors in Dublin city. This initiative will see the removal of 1,000 plastic bags from the streets per day, ensuring a cleaner, healthier environment. In the initial pilot phase plastic bags were removed from 90 streets, and there are plans to expand the scheme further on a phased basis. Extra staff were recruited in the waste management section as well as procurement of new fleet, including sweepers and wash vehicles. Six new Litter Wardens appointed, and a night patrol service added.

DCC also launched its new litter Prevention and Awareness Campaign 'No More Rubbish Excuses', as part of the Council's 3-pillar Waste Management Strategy to deliver a cleaner city. Everyone who lives in, works in, or visits the city has a responsibility in keeping the city clean.

8.0 COMMUNITY ENGAGEMENT



The Council engaged with thousands of residents throughout 2025 on a wide range of climate action themes.

Climate Action Engagement

Dublin Climate Action Week 2025
21 events held covering topics on

- Cookery
- Clothing swaps
- Cycling
- Enterprise
- Heritage
- Community gardens
- Climate technology

Sustainable Energy Communities -
72 in Dublin City, with 11 communities forming in 2025

11,000 attended **Grow College Green** information day

47 Schools awarded a Green Flag in 2025

Comhairle Cathrach
Bhaile Átha Cliath
Dublin City Council

EU MISSION LABEL
CLIMATE-NEUTRAL & SMART CITIES DUBLIN

8.1 Eat the Streets



The Climate Action Team undertook a review of the Eat the Streets annual festival in 2025 and decided to recalibrate the initiative to connect with urban communities at grass roots level through a series of smaller, community-oriented events. By decentralising the programme, the Council is targeting disadvantaged neighbourhoods characterised by high fast-food densities and adverse health outcomes. The initiative highlights practical benefits such as cost savings and health improvements and will be a continuous series of events throughout the year.

8.2 Community Hubs

8.2.1 Parnell Square Cultural Quarter

Work is advancing on a new, 11,500 m2 City Library and cultural hub at the north end of O'Connell Street, adjacent to the Hugh Lane Gallery. Scheduled for completion around 2029-2030, this flagship development will feature a new library, education centre, music hub, and refurbished Georgian houses. The project will be a great facility to promote and assist climate action initiatives.



The City Library Project (Phase 1)

8.3 Networks for Knowledge Exchange

Partnership Programme with Third Level Institutions-Future Work Force

The Council maintained internship relationships with third level institutions, including UCD, TUD, Queens University, DCU, NUI Maynooth, NCAD and NCI, offering meaningful work experiences across vital disciplinary areas, including – Planning, Environmental Health, Science and Law.

DCC also supported the following University programmes:

- DCU access to the workplace programme
- Trinity College Career Skills Programme
- UCD Careers with Impact Programme

8.4 Innovation Districts

8.4.1 Resilient North-East Inner City

The North-East Inner City (NEIC) Initiative works to deliver a safe, attractive and vibrant living and working environment for the North-East Inner-City community and its families. It published its annual report for 2025 on 23rd February, and its core work is summarised in the following infographic. It is important to have strong district structures in place in the Council to progress climate action at a district level.



8.5 Active Travel

The Active Travel team partnered with the Academy of the Near Future on a project called the Sensor Detector. Working with five primary schools, the programme empowers primary students to monitor air pollution and traffic within their community and respond, scientifically, to the issues they uncover.

Dublin's **Let's Move Project** focuses on children's movement through the city. Co-design workshops with children from the locality of St. Laurence O'Toole Community Centre is helping visualise mobility from a child's perspective, helping ensure children can move through the city safely whether by walking, cycling, wheeling or scooting.

8.6 Neighbourhoods at the Heart

8.6.1 Dublin Climate Action Week 2025



Dublin Climate Action Week and National Bike Week ran simultaneously during 2025, often overlapping to amplify the climate action message. Creativity was a recurring theme with inspirational storytelling, cook-a-longs, customising clothes workshops, scrap textile crafting and bicycle blinging to name a few. Swap shops and seed exchanges offered opportunities to connect and share, while businesses joined our LEO Office and the Eastern and Midland Region Waste Management Office for advice on grants and cost-effective management practices, whilst DCC libraries offered practical advice on sustainability and affordable living.

9.0 OPERATIONS AND SERVICE DELIVERY CLIMATE ACTION



The second part of the climate action plan sets out Dublin City Council’s ongoing operations and service delivery climate actions under four headings:

1. Our Staff
2. Our Buildings
3. Our Operations & Services
4. Our Engagement Activities & Partnerships

Set out below are summary updates on the status of these actions with progress indicators available on each individual actions in Appendix 1.

9.1 Climate Actions - Our Staff



“Our Staff “ actions relate to the efforts Dublin City Council is making to equip its staff to be more aware of how they can reduce energy use and emissions in their daily working lives including travelling to and from work. They also aim to upskill staff to make climate action an integral part of the projects they are working on.

9.2 Climate Actions - Our Buildings



“Our Buildings” actions seek to address making built assets more sustainable, these actions relate to our new and existing housing stock and the buildings occupied by Dublin City Council staff.

9.3 Climate Actions - Our Operations and Services



This section refers to a wide range of undertakings that will impact the sustainability of the Council in the carrying out our services.

9.4 Climate Actions - Our Engagement Activities & Partnerships

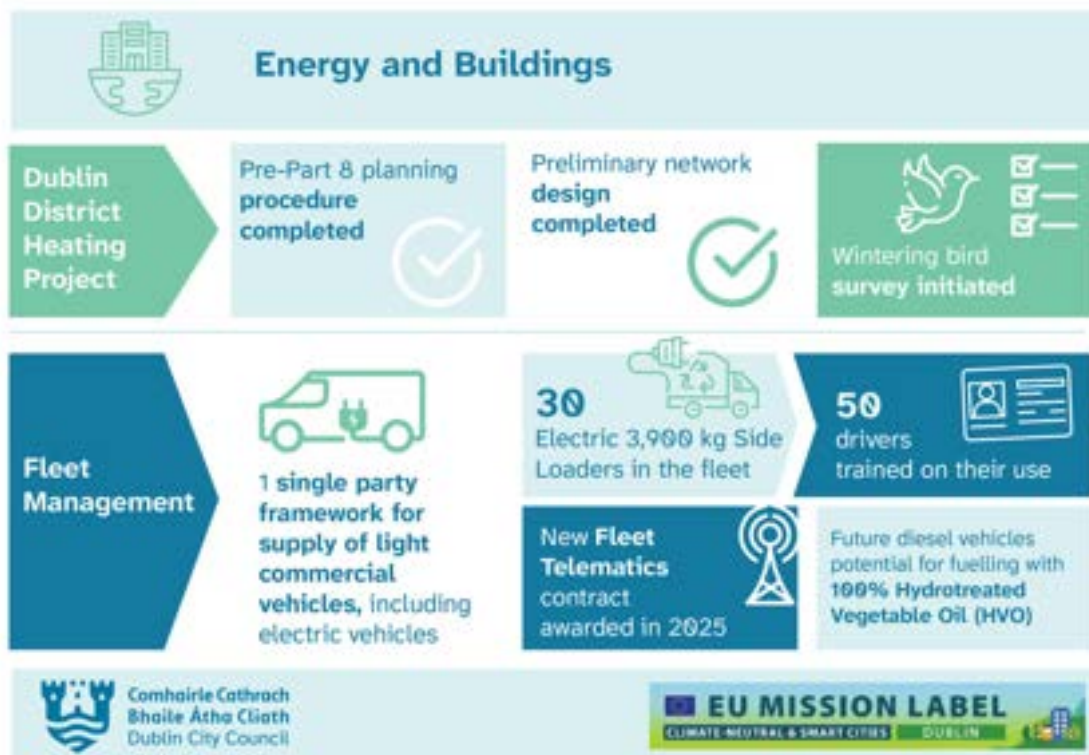


This set of actions details the wide range of campaigns and activities various sections of the Council carry out that are aimed at raising climate action awareness and buy-in from all sections of the community and stakeholders.

The Council's Air Quality Monitoring and Noise Control Unit met with the EPA in November 2025 to discuss the implications of the Cleaner Air for Europe (CAFE) Directive, which will be enacted in 2026.



As transport accounts for 12% of Dublin City Council's overall energy use, the Council is steadily replacing the fleet with newer, more fuel efficient vehicles, including electric vehicles.



A BikeBunker is a storage unit which is placed on a public street for the purpose of securely parking bicycles. They are intended for use by local residents who do not have sufficient storage space in their own homes.

Sustainable travel

| BikeBunkers Schemes | | Bike Share Schemes | | |
|--|---|--|---|---|
| Bleeper procured as operator for the BikeBunker Service | BikeBunkers scheme set to deliver over 300 bike bunkers in Dublin City over its 10-year timeframe . | Bleeper have over 800 bikes on our streets | Moby have over 1,500 bikes on our streets | RedClick Dublin Bikes 1,972,739 journeys were taken in 2025 |

Comhairle Cathrach Bhaile Átha Cliath Dublin City Council

EU MISSION LABEL
CLIMATE NEUTRAL & SMART CITIES DUBLIN

The Dublin City Neighbourhoods Competition is an annual competition for communities, schools and businesses in the city organised by Dublin City Council. The aim of the competition is to bring about a cleaner, greener environment and to make local areas more attractive for the benefit of all city residents and visitors.

Community

Dublin City Neighbourhood Awards 2025

| | |
|--|--|
| Overall Winner Stoneybatter Pride of Place | Runner-up Finglas Tidy Towns |
|--|--|

Chief Executive's Award

| | | | | | |
|----------------------------|------------------------|-----------------------------|-------------------------------|-------------------------|-----------------------------|
| CARA Residents Association | Clongriffin Tidy Towns | Ballymun Biodiversity Group | Bridgefoot Street Youth Group | Harolds Cross Tidy Town | Summer Row Community Garden |
|----------------------------|------------------------|-----------------------------|-------------------------------|-------------------------|-----------------------------|

Business competition overall Winner - Docklands Business Forum

Comhairle Cathrach Bhaile Átha Cliath Dublin City Council

EU MISSION LABEL
CLIMATE NEUTRAL & SMART CITIES DUBLIN

The Local Enhancement Programme (LEP) provides capital supports essential for many small community groups and organisations, particularly those who serve disadvantaged areas.

Community

Local Enhancement Programme (LEP)

| | | | | | |
|-------------------------------------|--|---|--|--|------------------------------|
| | | | | | |
| Bluebell Sister Shed €650 | The Ballyfermot Sister Shed Ballyfermot €2,314 | Kylmore/Chapelizod Sister shed Ballyfermot €1,885 | Cherry Orchard Family Resource Centre €3,650 | Artane Beaumont Family Recreation Centre €15,021 | Raheny GAA €25,000 |

Comhairle Cathrach Bhaile Átha Cliath Dublin City Council

EU MISSION LABEL
CLIMATE NEUTRAL & SMART CITIES DUBLIN

The MODOS Circular Economy Training Programme for SMEs is designed for SMEs and micro-enterprises operating in Ireland.

Circular economy

Micro and small enterprises

| | |
|--|--|
| 3 MODOS circular economy training courses for 52 business | 3 MODOS networking events |
| 3 SoCircular events with total of 134 participants | Created 1 Documentary - "Losing the Thread: The Cost of Fast Fashion" |

Comhairle Cathrach Bhaile Átha Cliath Dublin City Council

EU MISSION LABEL
CLIMATE NEUTRAL & SMART CITIES DUBLIN

10.0 COMMUNITY CLIMATE ACTION PROGRAMME



The next section of the annual report highlights the work of the Community Climate Action Programme phase I and the huge achievements of a selection of community groups.



10.1 Community Climate Action Programme

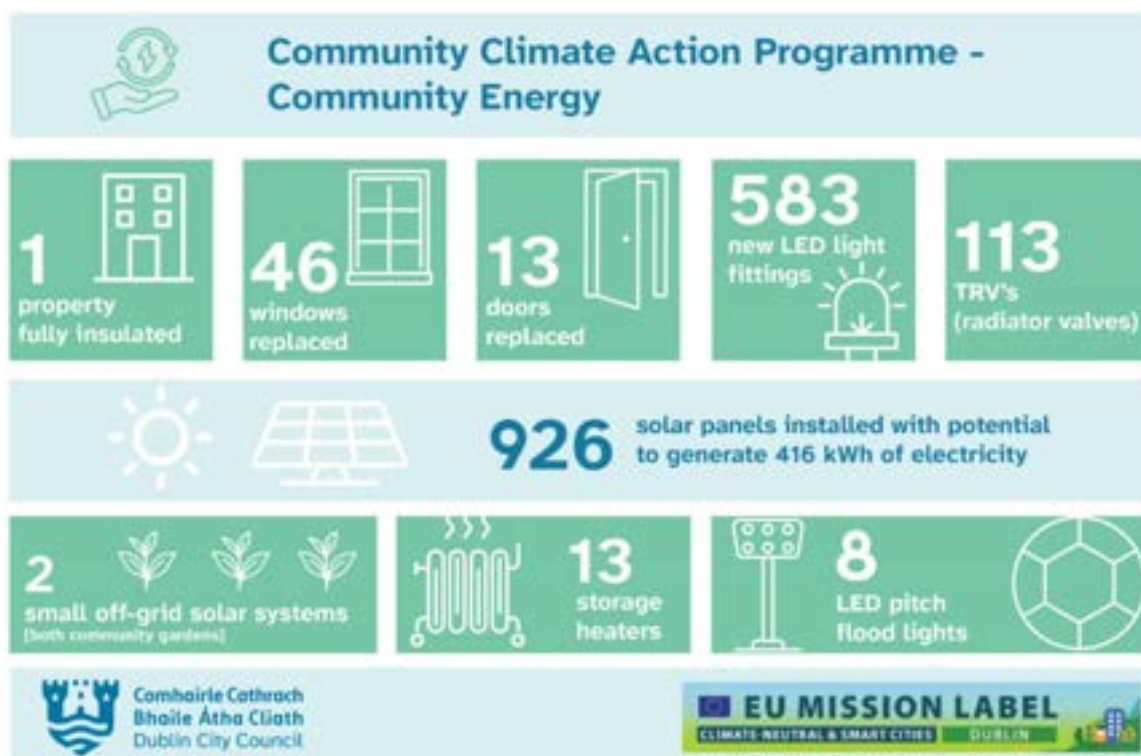
The Community Climate Action Programme (CCAP) seeks to shape and build low carbon communities in the Dublin City Council administrative area. With almost €2m of funding provided by the Department of Climate, Energy and Environment (DCEE) the programme is supporting community organisations in Dublin City to deliver meaningful climate actions which positively impact our communities.

Most of the actions are highly visual, with many projects acting as conversation starters, leading to a greater interest and understanding of climate action and demonstrating how we can all play an active role in our communities, in adapting to and mitigating against the impacts of climate change.

The following infographics illustrate the impact of the CCAP projects throughout the city around the themes of:

- energy
- growing food
- growing nature
- sustainable travel

Community groups carried out a range of climate actions under the themes listed above. The infographic below highlights some of the Energy actions implemented.



The infographic below highlights some of the food actions implemented including planting fruit trees and vegetables.



The infographic below highlights some of the nature and biodiversity actions implemented including planting fruit trees and vegetables.



The infographic below highlights some of the sustainable travel actions implemented including the installation of bike stands and lockers, and a repair café.



The following are detailed accounts of some of the projects funded by the Community Climate Action Programme - Phase 1.

10.2 Killester Blooms



Killester Blooms is a volunteer-led community garden that has transformed a disused pocket of land into a vibrant local resource for food growing, learning, and biodiversity. The garden supports all five climate action themes, strengthening food security while reconnecting the community with nature. Local primary school and TY students now have direct access to outdoor learning and gardening skills close to home. Climate Action Plan (CCAP) funding enabled the installation of a polytunnel to extend the growing season, an off-grid solar system to pump harvested rainwater, Sheffield bicycle parking to promote active travel, and wormeries to compost organic waste. Biodiversity has been enhanced through new hedging, pollinator-friendly planting, and a volunteer-built pond.

Killester Blooms demonstrates how local action, supported by public funding, can turn an unused space into a thriving community asset.

10.3 Kingfisher Community Garden



In a compact urban environment, the availability of space for food production and nature is often at a premium. The Kingfisher Project, situated on the River Poddle in Kimmage, sought funding for their 'pixel' programme, to demonstrate how food and wildlife can be supported even in the most unlikely spaces.

Households participating in the 'pixel' project are provided with 'pixel' raised beds, soil and seeds/plants. Advice is generously given by local green fingered volunteers, who help participants reconnect with their food and the natural world.

A back lane, a windowsill or even a houseboat were turned into havens for wildlife and living fresh food pantries thanks to passionate volunteers from the Kingfisher Project and a little creativity!

The Kingfisher project received funding via the CCAP to make hot-boxes which rapidly turns organic matter into fresh compost, an off-grid solar PV and rainwater harvesting system which pumps harvested rainwater to a new polytunnel ensuring 'pixel' growers have a ready supply of crops for whenever and wherever they want to get growing.

The Kingfisher Hub provides a space for participating growers to barter exchange food, develop their knowledge of food production and nature, but also connect with their neighbours, thereby strengthening community and build resilience as we navigate a world where climate change and the loss of biodiversity pose significant threats.

10.4 Doras Buí

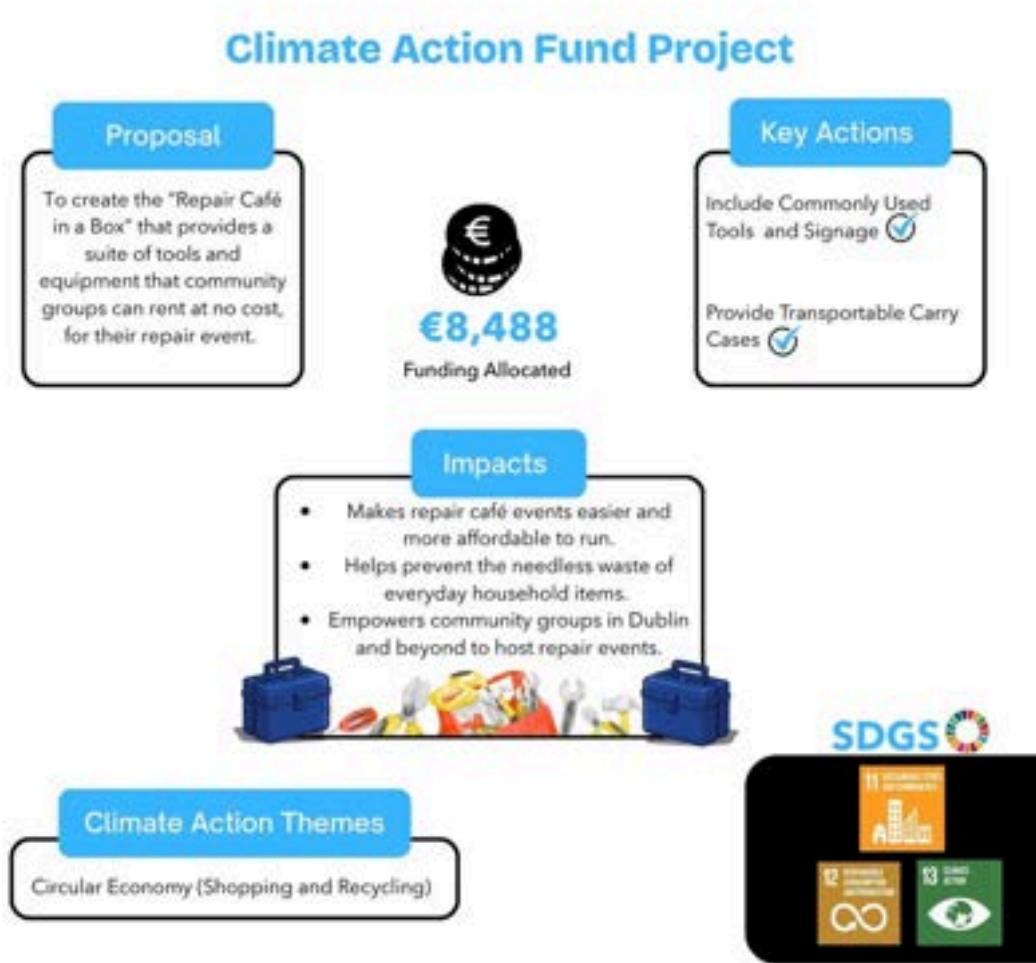


Doras Buí in Coolock, is a community development resource centre and early years' service dedicated to supporting lone-parent and vulnerable families in North-East Dublin, enhancing the dignity and quality of life of individuals and children.

The CCAP funded the installation of solar panels above the entrance to the centre. The primary motivation was saving money, with those savings directed to improving essential services, whilst demonstrating their commitment to sustainability. Conversations soon turned to 'how can we make a difference?'. Responding to an increased interest in climate action, the centre staff organised clothes swap shops, jewellery upcycling and sewing workshops and DIY and gardening courses. Planning is already under way to learn about the UN Sustainable Development Goals (SDG's) and strengthen their connection with nature.

The solar panels have made a significant contribution to lowering the centres costs, but by far the biggest benefit is the human one, where centre users are now playing an active role in climate action, saving themselves a little money and helping the planet in the process.

10.5 TOG Hackerspace



The "Repair Café in a Box", developed by Tog Hackerspace and funded by the Community Climate Action Programme (CCAP), helps community groups run repair events without needing to buy, hire or rely on volunteers bringing their own tools and equipment. The aim is to make it easier for more groups across Dublin and beyond to host Repair Cafés safely, confidently and at low cost.

The kit includes the usual Repair Café essentials, along with a range of power tools, testing equipment, consumables, signage and practical event supports. This means organisers can focus on bringing people together to repair items rather than sourcing equipment. TOG also provides guidance and advice to groups using the kit, helping them with setup, safe operation and the overall running of the event.

The project is about more than tools. It supports communities to build local repair skills, reduce waste, keep useful household items in service for longer, and encourage a culture of reuse rather than replacement. By making repair events easier to organise, the project helps more people take practical climate action in their own communities while also creating opportunities for learning, volunteering and sharing knowledge.

10.6 CLG Na Fianna



For many communities, the local church or GAA club serves as a vital social hub, and Na Fianna GAA is no exception. Home to over 4,000 members and the current All-Ireland Club Hurling Champions, the club’s Glasnevin clubhouse is a focal point for the local area.

Through its Green Club sub-committee, Na Fianna GAA is working towards climate neutrality by showcasing best practice and inspiring climate action among members and visitors. The installation of 500 LED lights has reduced energy use by an estimated 11,000 kWh annually, while a solar PV system now supplies around 20% of the club’s energy needs. These measures have contributed to a 30% reduction in energy bills, with further savings expected from attic insulation and upgraded doors. CCAP funding also supported a water refill station—over 10,500 refills were recorded in six months—along with a bicycle repair station to promote active travel. Highly visible climate actions demonstrate clear financial and environmental benefits, a message amplified by the club’s recent registration as an SEAI Energy Community.

11.0 GOVERNANCE AND THE PUBLIC REALM

**NET
ZERO
CITIES**

EU MISSION PLATFORM
CLIMATE NEUTRAL AND SMART CITIES

11.1 Climate-Neutral & Smart City



Meeting of the National Mirror Group in October 2025

Since being awarded the mission city label in May 2025 the climate action team has been engaging with its fellow mission city, Cork and pilot city Galway while also making valuable connections with a range of public and private stakeholders through participation in the national mirror group co-ordinated by the Department of Climate, Energy and Environment (DCEE).

Being a mission city enables Dublin City Council to secure funding towards a number of projects including the Grow College Green project from DCEE and the Build Capa-Cities project in partnership with Cork City Council, which is EU funded by Net Zero Cities.

The National Mirror Group is a forum for developing strong working relationships with department officials and other key public and private actors. To achieve the aims of the Net Zero Cities initiative Dublin City Council has instigated one-to-one meetings with relevant organisations to create momentum around the climate city contract, which incorporates the 121 actions of the climate action plan along with additional actions to be progressed by other public and private stakeholders.

11.2 Build Capa-Cities



Story Slam held in Autumn 2025

This is a project funded by Net Zero Cities that Cork City Council and Dublin City Council are collaborating on, whereby each local authority is carrying out innovative pilot projects aimed at bringing about behavioural change in staff and stakeholders in relation to climate action. Cork University, Maynooth University and University College Dublin are also collaborating on the project.

One of the key aspects of the project being piloted by Dublin City Council is the City Stories initiative involving a series of "story slam" events where staff, stakeholders and the public are given the opportunity to share personal experiences with their peers through story telling. The story tellers and events are supported and co-ordinated by a professional company. The feedback from the events has been positive with audiences finding the events relatable and inspiring. The project is scheduled to continue through to the end of 2026.

The city of La Rochelle in France is a pilot Net Zero City and has been partnering on the project creating a great opportunity for the three cities to share good practice and learn from each other, representatives from the three cities met in Cork in March and La Rochelle in October.

11.3 Climate Action Team and Governance

Leadership and Oversight

The Council's Climate Steering Group made up of the senior management team and chaired by the Chief Executive oversees implementation of the Plan with an Executive Managers Group supporting the Steering Group and the implementation of the Plan throughout the organisation. Reports are provided to the Climate Action & Urban Resilience Strategic Policy Committee (SPC), and the development of policy is done on a collaborative basis with the SPC.

The Executive Manager, Climate Action manages the work of the Climate Action Regional Team (CARO), the Air Quality Monitoring & Noise Pollution Control Unit and the Climate Action Team.

11.4 Climate Support to Dublin City Council

11.4.1 Climate Action Regional Office (CARO)

The Dublin metropolitan Climate Action Regional Office (CARO) works closely with the four Dublin Local Authority Climate Teams, Codema - the Dublin Energy Agency, to support the delivery of Climate Action Plans. A regional steering group, comprising the Directors of Services from the four Dublin local authorities, Codema representatives and the Eastern and Midlands Regional Assembly, oversees this work. The CARO programme focuses on seven key areas. Under Governance and Partnerships, CARO operates in line with its service-level agreement with the Department of Climate, Energy and Environment (DCEE) and local government priorities, ensuring strong corporate governance, financial management and effective work practices. Standard Operating Procedures are used to engage constructively with stakeholders and partners. CARO also supports the CCMA's Strategic Framework for Workforce Planning and Delivering Effective Climate Action 2030, advocating for dedicated climate resources and specialist skills.

In relation to local authority Climate Action Plans, CARO supports implementation, progress reporting, and engagement with stakeholders and the public. Adaptation work aligns with national policy through monitoring progress, addressing challenges, and promoting biodiversity and nature-based solutions. Within mitigation, CARO works with local authorities, the SEAI and key partners to drive energy efficiency, emissions reduction, district heating and biomass initiatives. Training and education focus on delivering the Local Authority Climate Action Training Plan 2024–2027 to build capacity across the sector.

Communications and citizen engagement includes supporting effective messaging, stakeholder collaboration and the National Dialogue on Climate Action. Finally, knowledge development involves sharing funding and learning opportunities and supporting practical, applied climate research with third-level institutions and other stakeholders.

11.4.2 Codema

Codema is Dublin's Energy Agency whose mission is to accelerate Dublin's low-carbon transition through innovative and inclusive local-level energy and climate change research, planning, engagement and project delivery. The agency works in collaboration with the four Dublin Local Authorities (DLAs) on monitoring and reporting public sector energy use.

Under S.I. 426 of 2014, the local authorities are obliged to report annually on their energy performance and CO2 emissions. Codema works with the DLAs on this report which involves compiling each local authority's energy consumption data for the previous year.

Codema also assisted the DLAs with the annual certification of public buildings with a useful floor area greater than 250m². Details are recorded on the SEAI portal for local authorities, and Codema issue certificates to the managers of each of these buildings, together with information on how much energy should be saved in the subsequent year to improve the energy rating.

The DLAs and Codema supported each other and shared a platform of events delivered as part of the Dublin Climate Action Week in May 2025. A programme of in-person and online events were showcased to promote climate action across Dublin City and County.

Dublin City Council has completed the SEAI ISO 50001 Accelerator programme, which is aimed at guiding local authorities towards achieving ISO 50001. Energy Management accreditation, an internationally recognised system based on continuous improvement and auditing to establish and maintaining an organisation's energy portfolio. Codema assisted Dublin City Council in developing Energy Performance Indicators (EnPI's) for this programme and is currently supporting the council to progress our energy management system to a stage where we can apply achieve accreditation in 2026.

Additional work elements were also undertaken by Codema to support DCC's community outreach projects in 2025, including GAA Green Clubs Phase 1 programme. Sustainable Energy Communities programme, Age Friendly Ireland, An Taisce Climate Ambassadors and 3rd level universities participating in events and workshops on climate action.

11.5 Decarbonisation Zones

All Local Authorities were required to identify and develop Decarbonising Zones (DZ) under the requirements and guidelines of the LA CAP 2024-2029.

Dublin City Council identified two decarbonising zones. Ballymun and Ringsend/Poolbeg Peninsula. The two locations in City are very different geographically, spatially and in terms of the specific challenges and opportunities facing both communities and the LA as a key partner.



Both Ballymun and Ringsend/Poolbeg Peninsula share a strong sense of community and pride of place, which are essential to facilitate engagement and prioritise and progress projects. Dublin City Council examined both challenges and opportunities when identifying the DZs, and gave significant consideration to the Just Transition principle



Dublin City Council staff met the Decarbonizing Zone Advisory Group in 2025 to make the case for dedicated government funding to help with implementation of initiatives in each zone and a decision on this is expected in 2026.



11.6 Quiet Areas

In 2025, Dublin City Council continued work on developing Quiet Areas. It is intended to establish a Support Services Framework for the Evaluation of Candidate Quiet Areas (CQA). It is expected that tender documents for this CQA evaluation framework will be completed in 2026 and it is anticipated that the framework will be established in 2026.



11.7 City Centre Public Realm

Westmoreland Street was inspected by several internal departments in 2025 to assess the feasibility of enhancing the streetscape. The Westmoreland Street Improvement Scheme recommends improvements to public lighting, the introduction of greening measures, and upgrades to the pavement. Final decisions on the scope and costs of potential works are under consideration with refinement of the scheme in 2026.

11.8 Laneways of Dublin 1 and Dublin 2

In Talbot Lane new low energy LED lighting was installed along with appropriate historical murals which provided illumination for both safety

and atmosphere in the area. Coles Lane saw the introduction of temporary greening, seating and an LED lighting structure. The lighting creates a safer environment by allowing people to navigate the lane with greater ease, discouraging unsafe activities and enhancing public confidence in the area. Additionally, the temporary lighting structure can be adjusted or relocated as needed, allowing for flexibility in the design and future urban planning while still ensuring safety and sustainability.



Dame Lane

Plans for the enhancement of Dame Lane were at an advanced stage in 2025. Consultation with adjoining businesses has been completed, and a range of improvement options has been considered. A detailed design is now being developed for the lane and its adjoining area.

11.9 Vibrant Streets

The recent improvements along Talbot Street have transformed the area into a vibrant, inviting space that beautifully blends modern urban design with nature. The upgraded public lighting now illuminates the street with energy-efficient LED fixtures, providing a warm and welcoming glow that enhances the overall ambiance. The lighting has been strategically placed to highlight key architectural features and green spaces, creating an atmosphere that is both functional and aesthetically pleasing, while ensuring the street remains safe and well-lit after dark. Permanent greening has also been a key focus of the upgrades, plants, and shrubs lining the footpaths. These green spaces not only add a refreshing touch of nature but also contribute to the street's overall sustainability.



Talbot Street Greening

The combination of greenery and carefully designed lighting creates an inviting atmosphere, encouraging pedestrians to linger, explore, and enjoy the newly enhanced street. The work has undoubtedly reinvigorated Talbot Street, transforming it into a lively, dynamic public space where both locals and visitors can connect with the city in a more meaningful way.

12.0 EUROPEAN PROJECTS



12.0 EU Funded Projects and International Best Practice Exchange

12.1 Urban Agenda for the EU – Thematic Partnership on Food (2024–2027)

The Urban Agenda for the EU Partnership on Food was launched in January 2024 and brings together 26 stakeholders from across sectors and levels of governance. Its aim is to build consensus on shared goals and priorities for sustainable food systems and to advocate for these priorities at national and EU levels. Recognising that food system transformation requires a systemic approach, the partnership prioritises the role of cities in leading change through innovative urban food policies.

Dublin City Council is a core member of the partnership and has contributed to the development of the Final Action Plan, which consists of seven key actions. The Council holds responsibility for Action 4 (Urban Food Policy Training), Action 5 (Public Land for Local Food Policies), and Action 6 (Selecting Indicators for Urban Food Systems). The Final Action Plan was completed and formally approved in September 2025.

The Council's contribution to this partnership included collaboration with other partners in shaping the key strategies and objectives of the Final Action Plan, supporting consultation processes, and sharing consultation documents with stakeholders in Ireland. A staff member also presented on the [Edible Dublin Food Strategy](#) at the Urban Agenda for the EU meeting in Barcelona in 2025, highlighting Dublin's approach to sustainable urban food systems.



12.2 CULTIVATE (2023–2027)

CULTIVATE is a €10 million EU-funded research and innovation project coordinated by Trinity College Dublin. The project aims to increase public awareness and understanding of Food Sharing Initiatives (FSIs), identify factors that enable or constrain food sharing, and promote sustainability, inclusion, and resilience in urban and peri-urban food systems.

A central output of CULTIVATE is the Food Sharing Compass, an online platform designed to map, analyse, and support food sharing initiatives across Europe. By doing so, the project seeks to strengthen the resilience and sustainability of urban food systems through collaboration and knowledge exchange. The CULTIVATE consortium comprises 19 partners, including cities, academic institutions, and food sharing organisations. Dublin is designated as a Spoke City within the project, meaning it is responsible for replicating and testing project tools and approaches at a local level. A key milestone of the project was the launch of the Menu of Good Governance in October 2025 at the Milan Urban Food Policy Pact.

The Council's contribution involved attending project meetings and strengthening food sharing networks in Dublin through initiatives such as Eat the Streets and the Edible Dublin Food Strategy. In late 2025, the Council also undertook training and preparation for the replication of the Menu of Good Governance, culminating in a workshop to be delivered in 2026.



12.3 EURADAPT – Improving Regional Policies to Increase Adaptation to Climate Change (2025–2028)

EURADAPT is an Interreg Europe project addressing climate change adaptation at local and regional levels. Climate change impacts including rising sea levels, extreme weather events, water scarcity, and biodiversity loss pose significant environmental, social, health, and economic challenges. In line with the European Green Deal, the project aims to strengthen the implementation of policies that increase adaptive capacity and resilience across regions.

The project focuses on interregional policy learning, enabling more advanced regions in climate adaptation to support less developed or more vulnerable regions. EURADAPT's learning activities are structured around four key themes: land use and food systems, water management, protection of critical infrastructure, and governance and citizen engagement.

Dublin City Council is a project partner, contributing to policy learning and exchange alongside partners from Italy, Sweden, France, Spain, Hungary, Ukraine, and others. The total project budget is €2.13 million, with an Interreg contribution of €1.68 million. Initial contacts began with the partners in 2025 and further work will be undertaken in 2026.



12.4 EUREKA – European Urban Exchanging Knowledge on Climate Neutrality (2025–2029)

In 2025, the climate action team began meeting peers from across Europe as part of the EUREKA project. This is an Interreg Europe project focused on supporting policy change in the design, implementation, monitoring, and evaluation of urban and regional climate neutrality policies. Partner cities and regions collaborate through interregional learning, capacity building, and the exchange of good practices.

The project addresses four core dimensions: governance of the climate neutrality transition; cross-sectoral policy coherence; improved funding models through the combination of multiple sources; and the development of robust monitoring and evaluation frameworks. The project is structured around a core learning phase, followed by a monitoring and dissemination phase.

Dublin City Council is one of eight European city and regional partners, alongside Prato (Lead Partner), Stockholm, Mechelen, Valencia, and others. The total project budget is €2.45 million.



Appendix 1: Climate Action Plan Action Status

| Theme | Action No. | Action Text | Action Type | Action Status |
|---|------------|---|-------------|---------------|
| Action Status Note (as between 1st Jan 25 - 31st Dec 25) If a recurring action was completed at any point during this year then select Completed | | | | |
| Resilient City | R 1.1 | Flagship project: Lower Dominick Street | Combined | In Progress |
| Resilient City | R 1.2 | Oliver Bond House Regeneration (Phase I) | Combined | In Progress |
| Resilient City | R 1.3 | Constitution Hill Regeneration | Combined | In Progress |
| Resilient City | R 1.4 | Pearse House Regeneration | Combined | In Progress |
| Resilient City | R 1.5 | Integrate EV charging facilities in all flat complex regeneration projects | Combined | In Progress |
| Resilient City | R 2.1 | Civic Offices | Combined | In Progress |
| Resilient City | R 2.2 | The Mansion House | Combined | Not Started |
| Resilient City | R 2.3 | City Hall | Combined | Not Started |
| Resilient City | R 2.4 | Pathfinder Programme | Mitigation | In Progress |
| Resilient City | R 3.1 | Dublin District Heating Project | Mitigation | In Progress |
| Resilient City | R 3.2 | Solar PV Car Port at Davitt Road | Mitigation | Not Started |
| Resilient City | R 3.3 | Explore and develop a strategy for geothermal heating in the city centre with GSI | Combined | In Progress |
| Resilient City | R 3.4 | Public Lighting Upgrade Project with LED lighting and CMS | Combined | Completed |
| Resilient City | R 3.5 | Infrastructure for Re-use, Repair and Re-purpose | Combined | In Progress |

| Theme | Action No. | Action Text | Action Type | Action Status |
|--------------------|------------|--|-------------|---------------|
| Resilient City | R 4.1 | Establish Eat the Streets Programme | Combined | In Progress |
| Resilient City | R 4.2 | Implementation of Markets Strategy | Combined | In Progress |
| Creative City | C 1.1 | Parnell Square Cultural Quarter | Combined | In Progress |
| Creative City | C 1.2 | Dalymount Park Redevelopment | Combined | In Progress |
| Creative City | C 1.3 | Maker Spaces in Libraries | Combined | In Progress |
| Creative City | C 1.4 | Improved Community Facilities | Combined | Completed |
| Creative City | C 2.1 | Partnership Programme with Third Level institutions - Future Work Force | Combined | In Progress |
| Creative City | C 2.2 | Establish Annual Deep Dive Data Challenge unearth learnings and target resources linking to implementation action on monitoring) | Combined | In Progress |
| Creative City | C 3.1 | Resilient North East Inner City | Combined | In Progress |
| Creative City | C 3.2 | Climate Smart Districts | Combined | In Progress |
| Creative City | C 4.1 | Ringsend Decarbonisation Zone | Combined | In Progress |
| Creative City | C 4.2 | Ballymun Decarbonisation Zone | Combined | In Progress |
| Resource-Full City | RF 1.1 | Implementation of greening strategies | Combined | In Progress |
| Resource-Full City | RF 1.2 | Dublin Bay UNESCO Biosphere Discovery Centre | Combined | In Progress |
| Resource-Full City | RF 1.3 | Liffey Vale Biodiversity Centre | Combined | In Progress |
| Resource-Full City | RF 2.1 | Santry River Restoration | Combined | In Progress |

| Theme | Action No. | Action Text | Action Type | Action Status |
|--------------------|------------|---|-------------|---------------|
| Resource-Full City | RF 2.2 | Camac River Restoration | Combined | Completed |
| Resource-Full City | RF 2.3 | The Liffey a Place for Leisure | Combined | In Progress |
| Resource-Full City | RF 3.1 | Adaptative Re-use Programme converting existing buildings to 'new' uses such as social housing | Combined | In Progress |
| Resource-Full City | RF 4.1 | Establish network of centres to enable the scaling out of social and circular small and medium enterprises | Combined | In Progress |
| Social City | S 1.1 | Delivery of Active Travel projects in accordance with the 2022 to 2024 projects (C2CC, Liffey, Royal Canal) | Combined | Completed |
| Social City | S 1.2 | Delivery of Active Travel projects in accordance with the 2025 to 2027 projects | Mitigation | Completed |
| Social City | S 1.3 | Delivery of Active Travel projects in accordance with the 2027 and onward projects | Combined | Not Started |
| Social City | S 1.4 | Community Participation Events to celebrate new active travel routes as they open and encourage use | Combined | Completed |
| Social City | S 1.5 | Behaviour Change initiatives to encourage use of the network and modal shift across diverse groups | Combined | In Progress |
| Social City | S 2.1 | Sustainable Energy Communities | Combined | Completed |
| Social City | S 2.2 | Quiet Zones | Combined | In Progress |
| Social City | S 2.3 | Low carbon mobility hubs (EV charging infrastructure) | Combined | In Progress |

| Theme | Action No. | Action Text | Action Type | Action Status |
|-------------|------------|---|-------------|---------------|
| Social City | S 3.1 | Delivery of Parks Strategy | Combined | Completed |
| Social City | S 4.1 | City Centre Public Realm | Combined | Completed |
| Social City | S 4.2 | Laneways of Dublin 1 and Dublin 2 | Combined | In Progress |
| Social City | S 4.3 | Vibrant Streets | Combined | In Progress |
| Our Staff | S 1 | Sustainable Work Etiquette Guide on email use, video conference calls, printing, turning computers off, lights off, paper use and other stationary supplies to reduce energy use and emissions. | Combined | In Progress |
| Our Staff | S 2 | Promote shift to active modes of commuting to reduce transport emissions. | Adaptation | Completed |
| Our Staff | S 3 | Implement Smart Mobility Hubs across DCC offices where feasible (Civics, Marrowbow Lane, Fire Brigade). | Combined | In Progress |
| Our Staff | S 4 | Continued staff energy awareness in Council buildings. | Combined | Completed |
| Our Staff | S 5 | Conduct detailed study of staff modal split to identify why and how staff choose modes to inform measures aimed at reducing staff travel emissions. | Combined | In Progress |
| Our Staff | S 6 | Occupational eco driver training for fleet staff and all staff who want training. | Combined | In Progress |

| Theme | Action No. | Action Text | Action Type | Action Status |
|---------------|------------|---|-------------|---------------|
| Our Staff | S 7 | Risk workshops to assess the likely impacts of climate change on Council services and across the city. | Combined | In Progress |
| Our Buildings | B 1 | Undertake programme of flat complex regenerations. | Combined | In Progress |
| Our Buildings | B 2 | Continuation of planned incremental improvement of housing stock (voids, extensions, boiler replacement, retrofit and energy efficiency programme). | Combined | Completed |
| Our Buildings | B 3 | Continue to work with appropriate external stakeholders to deliver social housing at a BER B or Cost optimal standard. | Combined | Completed |
| Our Buildings | B 4 | Incorporate nature based solutions in all new Council housing developments and maintain. | Combined | In Progress |
| Our Buildings | B 5 | Implement Sustainable urban Drainage Guidelines in Council buildings where feasible. | Combined | In Progress |
| Our Buildings | B 6 | Implement infrastructure to improve and reduce water use in DCC buildings. | Combined | In Progress |
| Our Buildings | B 7 | Display Energy Certificates for public buildings. | Combined | Completed |

| Theme | Action No. | Action Text | Action Type | Action Status |
|---------------------------|------------|---|-------------|---------------|
| Our Buildings | B 8 | Achieve (& exceed where possible) compliance with current building regulations with the provision of on-site renewable energy in all DCC building projects, new build or retrofit. | Combined | In Progress |
| Our Buildings | B 9 | Annual Monitoring & Reporting to SEAI supported by ISO50001 compliant energy management system. | Combined | In Progress |
| Our Operations & Services | OS 1 | Use Green Public Procurement where feasible in all procurement of goods and services to ensure adverse environmental impacts are avoided and positive environmental impacts are enhanced. | Combined | Completed |
| Our Operations & Services | OS 2 | Undertake annual audits of climate expenditure that considers cost effectiveness, efficiency, governance, relevance, coherence and impacts (environmental and societal). | Combined | In Progress |
| Our Operations & Services | OS 3 | Ecology Assessment to be carried out on all DCC projects with the intent to enhance the site's ecological value and biodiversity | Combined | In Progress |
| Our Operations & Services | OS 4 | Regular maintenance of regional and local roads and active travel routes to mitigate risks. | Combined | In Progress |
| Our Operations & Services | OS 5 | Carry out Canal Cordon Count to monitor modal shift and traffic volumes. | Combined | In Progress |

| Theme | Action No. | Action Text | Action Type | Action Status |
|---------------------------|------------|---|-------------|---------------|
| Our Operations & Services | OS 6 | Increase number of school zones, where feasible. | Combined | Completed |
| Our Operations & Services | OS 7 | Dublin City Council to promote active travel and public transport | Combined | Completed |
| Our Operations & Services | OS 8 | Monitoring of flood forecasting and warning system. | Combined | Completed |
| Our Operations & Services | OS 9 | Implement flood risk management guidelines. | Combined | In Progress |
| Our Operations & Services | OS 10 | Monitor implementation of flood risk management guidelines in planning applications, having due regard for environmental sensitivities such as European sites, Biodiversity, Archaeology and amenity value etc. | Combined | In Progress |
| Our Operations & Services | OS 11 | Coordinate Emergency Response Plans and revise based on learnings from management of response to events, having due regard for environmental sensitivities such as European sites, Biodiversity, Archaeology and amenity value etc. | Combined | In Progress |
| Our Operations & Services | OS 12 | Update DLA urban drainage and flooding policies promoting natural flood measures as a priority to inform new development plan. | Combined | In Progress |
| Our Operations & Services | OS 13 | Develop and complete environmental surveys of all City rivers and estuaries as baseline surveys from which to monitor ecosystem health. | Combined | In Progress |

| Theme | Action No. | Action Text | Action Type | Action Status |
|---------------------------|------------|--|-------------|---------------|
| Our Operations & Services | OS 14 | DCC is working in partnership with the EPA on expanding and enhancing ambient air quality monitoring in Dublin in accordance with the National Ambient Air Monitoring Programme. | Combined | In Progress |
| Our Operations & Services | OS 15 | Identify areas in need of infrastructure that supports re use, repair, repurpose, and free cycling. | Combined | Completed |
| Our Operations & Services | OS 16 | Monitor and enforce waste regulation. | Combined | Completed |
| Our Operations & Services | OS 17 | Identify opportunities of introducing circular economy principles in Bring Centre Depots and implement where appropriate. | Combined | Completed |
| Our Operations & Services | OS 18 | Expand Depot collection of WEEE products to all Depots, whilst ensuring such sites are operated in accordance with the requirements of the Waste Management Act and in a manner that does not result in environmental nuisance or pollution. | Combined | In Progress |
| Our Operations & Services | OS 19 | Use ecofriendly cleaning agents and manual methods where possible to align with Herbicide Policy. | Adaptation | Completed |

| Theme | Action No. | Action Text | Action Type | Action Status |
|---------------------------|------------|--|-------------|---------------|
| Our Operations & Services | OS 20 | Continue to develop sustainability guidelines and terms and conditions for any events supported, facilitated or organised by DCC, by reviewing terms and conditions for all events approved by DCC to incorporate possible sustainability conditions | Combined | In Progress |
| Our Operations & Services | OS 21 | Review terms and conditions for all events approved by DCC to incorporate possible sustainability conditions and integrated considerations for biodiversity and other environmental sensitivities. | Combined | In Progress |
| Our Operations & Services | OS 22 | Develop strategy to convert fleet to low emission vehicles based on sustainable energy/fuel sources; and ensure end of life plans are in place for vehicles. | Combined | In Progress |
| Our Operations & Services | OS 23 | Monitor and prepare report on the seagrass (<i>Zostera</i> spp.) beds at Sandymount and Merrion Gates to inform conservation management of this area. | Combined | Completed |
| Our Operations & Services | OS 24 | Conduct wildlife and biodiversity surveys. | Combined | Completed |
| Our Operations & Services | OS 25 | Implement the North Bull Island Management Plan. | Combined | Completed |
| Our Operations & Services | OS 26 | Implement Dublin City Tree Strategy. | Combined | Completed |

| Theme | Action No. | Action Text | Action Type | Action Status |
|--|------------|---|-------------|---------------|
| Our Operations & Services | OS 27 | Identify natural heritage at risk from climate change in Dublin City to inform planning and management decisions. | Combined | Completed |
| Our Engagement Activities & Partnerships | EP 1 | Develop and implement Sustainable Living Programme to engage Council Tenants on how they can reduce consumption of energy, and water. | Combined | In Progress |
| Our Engagement Activities & Partnerships | EP 2 | Hold Bike Week annually. | Combined | Completed |
| Our Engagement Activities & Partnerships | EP 3 | Host events as part of European Mobility Week. | Combined | Completed |
| Our Engagement Activities & Partnerships | EP 4 | Organise Pedestrian Days in areas with high footfall. | Combined | In Progress |
| Our Engagement Activities & Partnerships | EP 5 | Cycle Training Programmes for 6th Class students / Pedal Power Labs*. | Combined | Completed |
| Our Engagement Activities & Partnerships | EP 6 | Set up partnership and create a communications engagement and promotion platform for cycling and walking - "Stories on the move". | Mitigation | In Progress |
| Our Engagement Activities & Partnerships | EP 7 | Implement flood awareness campaign with the OPW following a holistic environmentally integrated approach. | Mitigation | Completed |

| Theme | Action No. | Action Text | Action Type | Action Status |
|--|------------|---|-------------|---------------|
| Our Engagement Activities & Partnerships | EP 8 | The Council will work with the Local Authority Waters Programme in its support of communities and stakeholders in the delivery of local water quality projects and initiatives have due regard for environmental sensitivities such as Archaeology, European sites, biodiversity and amenity value etc. | Mitigation | Completed |
| Our Engagement Activities & Partnerships | EP 9 | Communication and awareness campaigns on flood risk management and natural flood management measures. | Mitigation | In Progress |
| Our Engagement Activities & Partnerships | EP 10 | Implement an annual education and outreach programme to raise awareness of climate change. | Mitigation | In Progress |
| Our Engagement Activities & Partnerships | EP 11 | Engage with students about climate related projects through CPD Programme/Engineers Week. | Mitigation | In Progress |
| Our Engagement Activities & Partnerships | EP 12 | Monitor and develop the Home Energy Savings Kits in DCC's public libraries. | Combined | In Progress |
| Our Engagement Activities & Partnerships | EP 13 | Run anti-dumping and anti-litter campaigns. | Mitigation | Completed |
| Our Engagement Activities & Partnerships | EP 14 | Support and promote litter clean up days and initiatives. | Mitigation | Completed |
| Our Engagement Activities & Partnerships | EP 15 | Apply for LAPN (Local Authority Prevention Network) grants. | Mitigation | Completed |

| Theme | Action No. | Action Text | Action Type | Action Status |
|--|------------|---|-------------|---------------|
| Our Engagement Activities & Partnerships | EP 16 | Create Stop Food Waste campaign for businesses and schools. | Combined | In Progress |
| Our Engagement Activities & Partnerships | EP 17 | Promote Reuse Month annually. | Mitigation | In Progress |
| Our Engagement Activities & Partnerships | EP 18 | Provide public with information on leaf composting programme across the city and provide workshops. | Mitigation | Completed |
| Our Engagement Activities & Partnerships | EP 19 | Support and promote Tidy Towns / City Neighbourhoods initiatives which have due regard for environmental sensitivities such as Archaeology, European sites, biodiversity and amenity value etc. | Mitigation | Completed |
| Our Engagement Activities & Partnerships | EP 20 | Support and promote Green Schools and Annual Conference. | Combined | Completed |
| Our Engagement Activities & Partnerships | EP 21 | Develop and implement an education programme to tackle climate issues related to the water sector. | Combined | In Progress |
| Our Engagement Activities & Partnerships | EP 22 | Promote recycling and the circular economy to householders through a range of workshops, talks and programmes. | Combined | Completed |
| Our Engagement Activities & Partnerships | EP 23 | Continue to work with the Rediscovery Centre to promote sustainability. | Mitigation | Completed |

| Theme | Action No. | Action Text | Action Type | Action Status |
|--|------------|--|-------------|---------------|
| Our Engagement Activities & Partnerships | EP 24 | Engage with relevant stakeholders and deliver an energy efficiency, circular economy and sustainability training programme targeting micro and small enterprises. | Combined | Completed |
| Our Engagement Activities & Partnerships | EP 25 | Tree-planting activities with schools including annual National Tree Week and National Tree Day. | Mitigation | In Progress |
| Our Engagement Activities & Partnerships | EP 26 | Continue to develop SoCircular as an initiative to encourage social and circular economy models among businesses in the city and to promote social and circular enterprises. | Mitigation | In Progress |
| Our Engagement Activities & Partnerships | EP 27 | Apply for EU funding to undertake innovative climate action projects and build partnerships. | Combined | Completed |
| Our Engagement Activities & Partnerships | EP 28 | Build partnerships with cities internationally to exchange best practice for climate action and implement learnings into all future plans and projects. | Combined | Completed |
| Our Engagement Activities & Partnerships | EP 29 | Implement and promote the objectives of the Dublin Bay UNESCO Biosphere Partnership and promote the work of the Biosphere | Combined | Completed |
| Our Engagement Activities & Partnerships | EP 30 | Work with the Dublin Mountains Partnership on implementing strategic plans and activities for Climate Change mitigation and biodiversity enhancement. | Combined | In Progress |

| Theme | Action No. | Action Text | Action Type | Action Status |
|--|------------|---|-------------|---------------|
| Our Engagement Activities & Partnerships | EP 31 | Public Service Innovation Week. | Combined | In Progress |
| Our Engagement Activities & Partnerships | EP 32 | Promote and encourage community involvement in the retrofit of SuDS in existing developments, having due regard to environmental sensitivities such as Archaeology, European sites, biodiversity and amenity value etc. | Combined | In Progress |

Appendix 2- Policy Updates 2025

CAP25

The national Climate Action Plan 2025 (CAP25), published in April 2025, is the third national statutory Climate Action Plan. CAP25 builds on the previous plans to provide a roadmap for taking decisive action to halve Ireland's emissions by 2030 and reach net zero by no later than 2050, as committed to in the Climate Action and Low Carbon Development (Amendment) Act 2021. The supplementary Annex of Actions includes only new and high impact actions whilst the full roadmap of actions to support the delivery of our climate targets remains within the Climate Action Plan itself.

Le Chéile 28 Statement of Strategy 2025-2028

The Department of Climate, Energy and the Environment (DCEE) set out its policies for accelerating climate action and energy transition for the next 3 years in its Le Chéile 28 Statement of Strategy 2025 - 2028. The strategy focuses on sustainable energy systems, circular economy, and environmental protection. To facilitate proactive engagement and provide support for the understanding and adoption of climate action, the Department intends to provide support to Local Government to enhance its role in climate action, in line with their Climate Action Plans.

Renewable Heat Obligation Bill

The Renewable Heat Obligation Bill was approved in 2025. The scheme which is expected to commence in 2026 will obligate suppliers of fossil fuels to the heat sector to ensure a minimum percentage of their supplied energy comes from renewable sources. As well as reducing emissions and reliance on imported fuels, the Bill aims to boost indigenous biomethane production. Local authorities will play a role through the normal planning and development process of new infrastructure such as anaerobic digestion (AD) plants for producing biomethane and gas grid injection sites.

Appendix 2- Policy Updates 2025

Annual Review 2025

The Climate Change Advisory Council (CCAC) in 2025 took a new approach to reviewing the Irish Government's progress on climate action. A key task of the Council is to conduct an annual review of progress made over the previous year across all sectors, in reducing greenhouse gas emissions and furthering the transition to a low-carbon, climate-resilient and sustainable economy and society by 2050. To deliver on this function, the CCAC produced sector focused annual reviews as follows:

1. Annual Review 2025 - Our Changing Climate in 2024 (March 19, 2025)
2. Annual Review 2025 – Electricity (29, April 2025)
3. Annual Review 2025 – Transport (18, June 2025)
4. Annual Review 2025 – Agriculture, Land-use and Land-use Change, and Forestry (16, July 2025)
5. Annual Review 2025 – Built Environment, Industry and Waste (2, September, 2025)
6. Annual Review 2025 – Preparing for Ireland Changing Climate (29 September, 2025)
7. Annual Review 2025 – Biodiversity (14, October 2025)
8. Annual Review 2025 – Summary For All
9. Annual Review 2025 – Cross Sectoral Review

Ireland's Annual Report 2024 on Public Sector Energy Efficiency Performance

The Sustainable Energy Authority of Ireland's Annual Report 2024 on Public Sector Energy Efficiency Performance showed in its breakdown of final energy consumption by subsector, that Local Authorities & Water Services were the second biggest energy consumer in the public sector. The breakdown of 2023 energy-related GHGs by energy type for the entire public sector showed electricity related GHGs to be largest (41%) followed by transport (21%) and natural gas (20%). Energy efficiency performance for Irish public bodies has improved by 34.9% since baseline, where fossil CO2 emissions have decreased by 6.3% since the greenhouse gas baseline, and total energy-related CO2 emissions have decreased by 24.1%.

Appendix 2- Policy Updates 2025

Sectoral Adaptation Plans

In 2025 Departments across national government responsible for the development of sectoral adaptation plans between June and September 2025 issued their plans for public consultation in line with the National Adaptation Frame. The finalised sectoral adaptation plans were published on November 13th, 2025.

Annual Emissions Summary Ireland's Provisional Greenhouse Gas Emissions

The Environmental Protection Agency's Ireland's Provisional Greenhouse Gas Emissions 1990-2023 was published in July 2024. The report showed that provisional total national greenhouse gas emissions in 2023 (excluding LULUCF) are estimated to be 55.01 million tonnes carbon dioxide equivalent (Mt CO₂eq) which is 6.8% lower (or 4.00 Mt CO₂eq) than emissions in 2022 (59.00 Mt CO₂eq) and follows a 2.0% decrease in emissions reported for 2022. Emissions in 2023 are 1.2% lower than the historical 1990 baseline for the first time in 33 years.

The Environmental Protection Agency's Ireland's Greenhouse Gas Emissions Projections 2024-2055 was published in May 2025. It provides an assessment of Ireland's total projected greenhouse gas (GHG) emissions from 2023 to 2050, using the latest inventory data for 2023 as the starting point. The focus of the assessment is out to 2030 given current national and EU 2030 climate targets. Extended projections out to 2055 are also provided.

Key findings include:

- Ireland is not on track to meet the 51 per cent emissions reduction target (by 2030 compared to 2018) based on these projections which include most 2024 Climate Action Plan measures
- Budget period 1 (2021-2025) of 295 Mt CO₂eq is projected to be exceeded by between 8 to 12 Mt CO₂eq.
- Budget period 2 (2026-2030) of 200 Mt CO₂eq is also expected to be exceeded by a significant margin of 77 to 114 Mt CO₂eq (with carryover from Budget period 1).