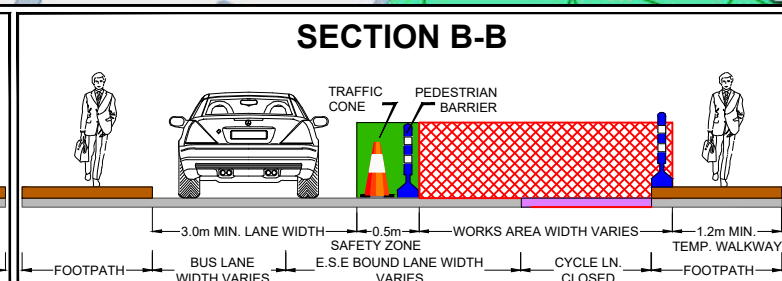
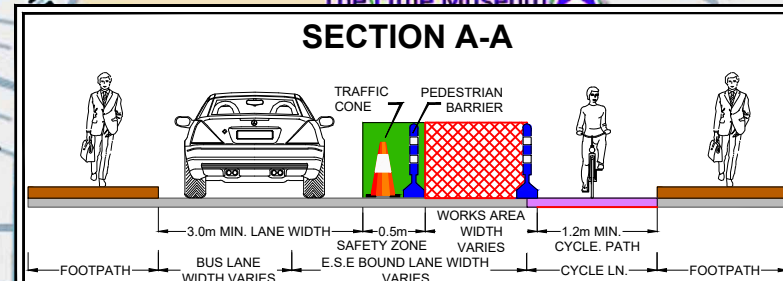
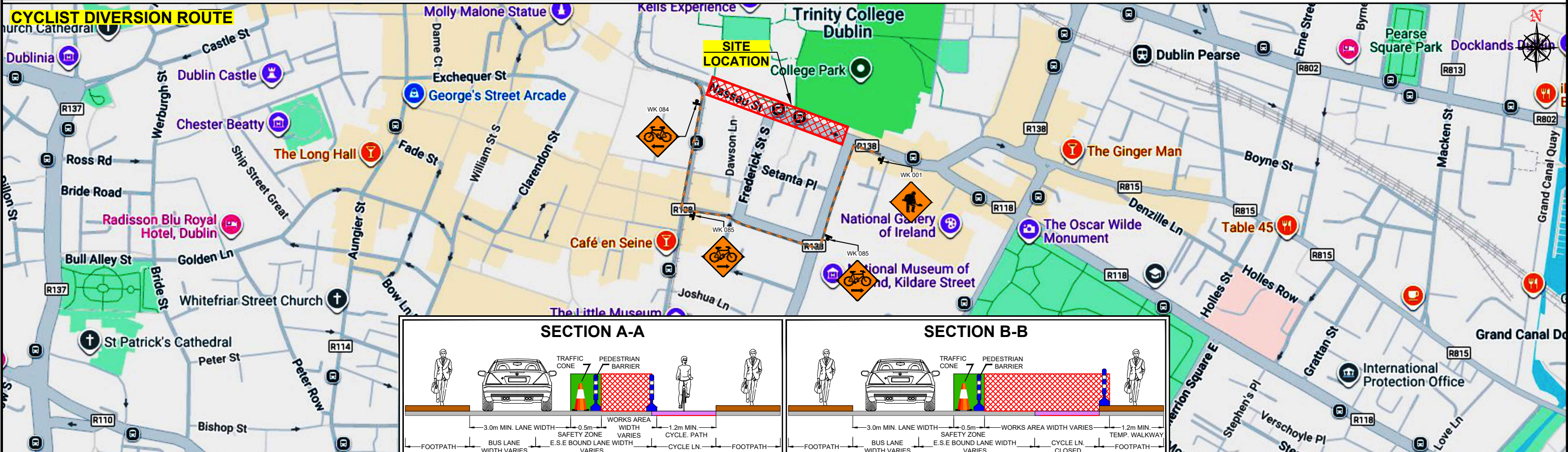
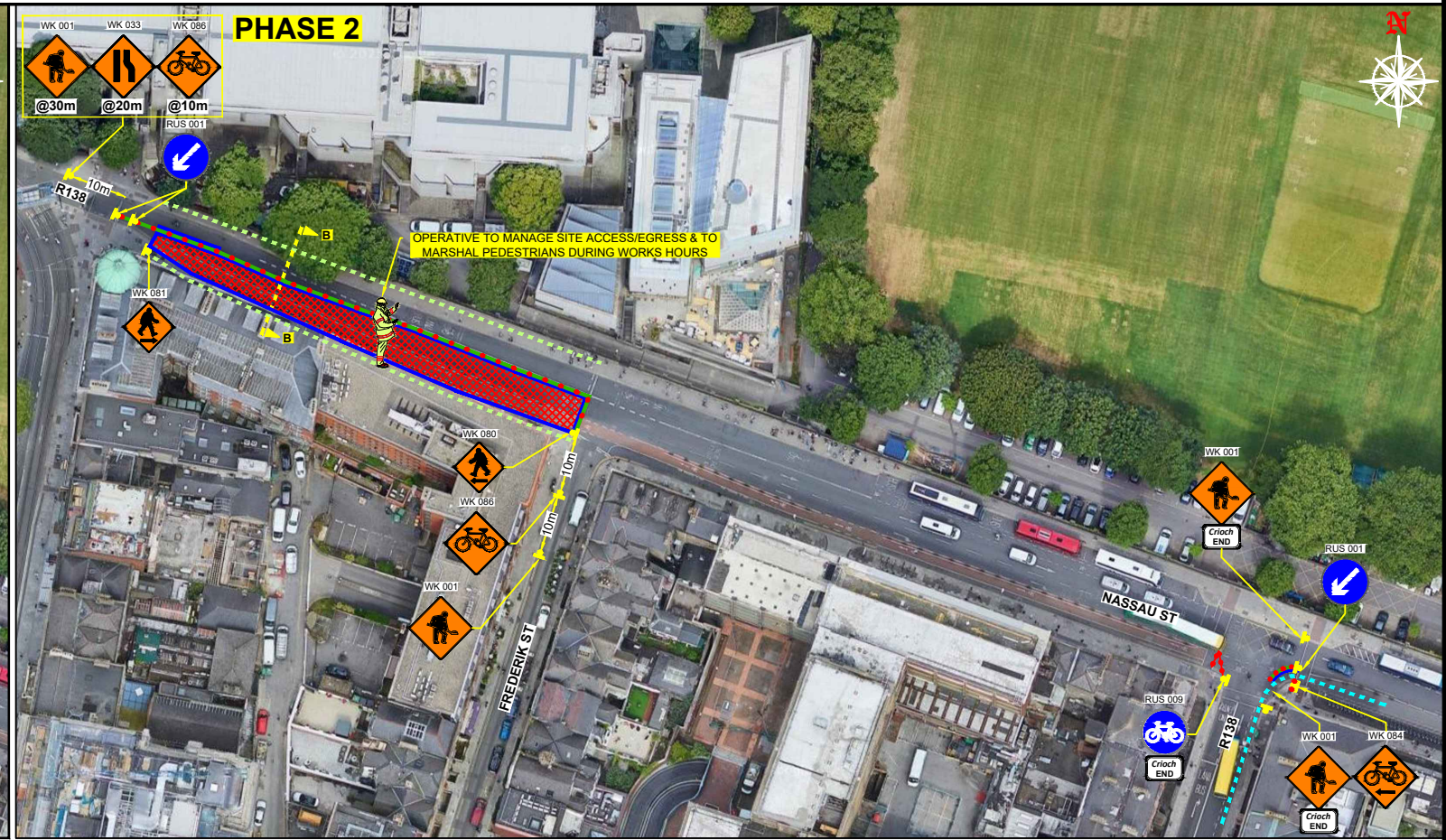
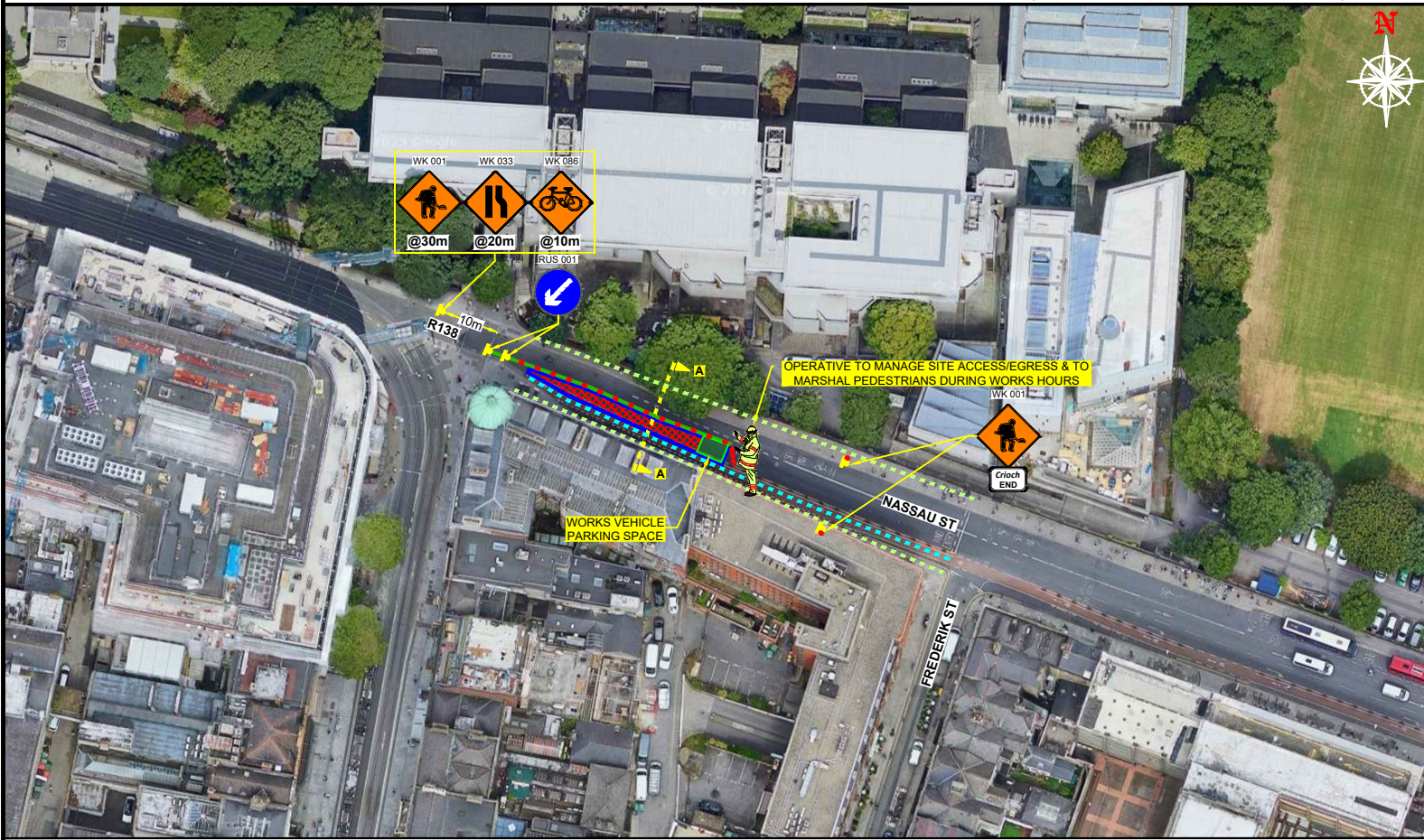


R138, NASSAU STREET, CO. DUBLIN - CYCLE LANE WORKS



DESIGN PARAMETERS				SAFETY ZONE			TEMPORARY SIGNS			CONE SPACING AND SIZE			RATE OF TAPER			LAMP SPACING			TRAFFIC MANAGEMENT SYSTEM		
Road Lvl(Sub)	Roadworks Type	Speed Limit (km/h)	Min. Lane Width (m)	Longitudinal (m)	Lateral (m)	Set Back (m)	Distance (m)	Number	Min. Size (mm)	Sign Visibility (m)	Longitudinal (m)	At Tapers (m)	Min. Height (mm)	Taper at H/S (m)	Taper at Lane (m)	At Tapers (m)	Longitudinal (m)	Method	Coned Area Length (m)	Max. Traffic Flow (veh/h)	
1 (i)	B	30	3.00	0.5	0.5	-	10	1	450	25	3	1	750	-	1 in 1	3	6	Road Narrows	n/a	n/a	
1 (iv)	B	30	3.00	15	0.5	-	20	2	600	60	6	3	750	1 in 10	1 in 10	6	12	Road Narrows	n/a	n/a	

DESIGNED:		SCALE:		PROJECT TITLE:	
VB	VB	N	NTS	R138, NASSAU STREET, CO. DUBLIN	
DRAWN:		DATE:		DRAWING NAME:	
SS	SS	05-06-2026		CYCLE LANE WORKS	
APPROVED:		STAGE:		DWG. No.:	
SS	SS	CONSTRUCTION		JC 8102-00-01	

Rev. No.:	Revision Details	Rev. Date:	Designed:	Drawn:	Verified:	Approved:

GARY KEVILLE TRAFFIC MANAGEMENT LTD.		CLIENT:	
Rosemount Business Park, Dublin 11, Co. Dublin, Ireland		CAIRN	
Tel: (+3531) 667 4322; Email: info@gk-tm.ie; Visit us at: www.gk-tm.ie			

LEGEND

- - TRAFFIC CONES
- - SIGN LOCATION
- ▨ - WORKS AREA
- ▨ - SAFETY ZONE
- ▨ - PEDESTRIAN BARRIER
- ▨ - PEDESTRIAN ROUTE
- ▨ - CYCLIST ROUTE
- ▨ - CYCLIST DIVERSION ROUTE

NOTES:

- 1) ALL INFORMATION CONTAINED IN THIS DRAWING SHOULD BE CHECKED AND VERIFIED BY CONTRACTOR PRIOR TO ANY STAGE OF CONSTRUCTION.
- 2) ALL WORKS ARE TO BE CARRIED OUT IN ACCORDANCE WITH LOCAL AUTHORITY REQUIREMENTS AND ARE TO BE INCLUDED IN THE SITE-SPECIFIC SAFETY & HEALTH PLAN.
- 3) A SITE-SPECIFIC RISK ASSESSMENT SHALL BE CONDUCTED PRIOR TO IMPLEMENTING THE TEMPORARY TRAFFIC MANAGEMENT PLAN TO ENSURE THAT THE ACTUAL SITE CONDITIONS ALIGN WITH THOSE CONSIDERED DURING THE DESIGN PHASE FOLLOWING SUBMISSION.
- 4) CONTRACTOR SHALL BE RESPONSIBLE FOR THE PROVISION OF RAMP ACCESS AT ANY CHANGE IN ROAD SURFACE LEVEL WHERE TRAFFIC RUNS ON A TEMPORARY SURFACE.
- 5) THIS TRAFFIC MANAGEMENT PLAN MAY ONLY BE IMPLEMENTED BY A TTOS WHO MUST CARRY OUT A RISK ASSESSMENT BEFORE IMPLEMENTATION. TTOS MUST BE IN POSSESSION OF CSCS CARD "SIGNING, LIGHTING AND GUARDING AT ROAD WORKS" CONSTRUCTION REGULATIONS 2006.
- 6) EXACT SIGN POSITIONS TO BE AGREED ON SITE.
- 7) ACCESS TO BE MAINTAINED TO ALL DWELLINGS / BUSINESSES AT ALL TIMES.
- 8) SITE INSPECTIONS AND MAINTENANCE OF THE TRAFFIC MANAGEMENT LAYOUT IS TO BE CONDUCTED ON A DAILY BASIS TO ENSURE THE SAFETY AND INTEGRITY OF THE DESIGN.
- 9) ALL TEMPORARY FOOTWAYS MUST HAVE A GOOD QUALITY, EVEN SURFACE AND BE MAINTAINED FREE FROM OBSTRUCTION.
- 10) PEDESTRIANS TO BE PROTECTED FROM WORKS AREA BY PEDESTRIAN BARRIER SYSTEM.
- 11) TM OPERATIVES TO MANAGE SITE ACCESS/EGRESS AND MARSHAL PEDESTRIANS DURING WORKS HOURS.

Copyright Notes:
THIS DRAWING IS THE PROPERTY OF GARY KEVILLE TRAFFIC MANAGEMENT. THE DESIGN INFORMATION CONTAINED HEREIN IS STRICTLY CONFIDENTIAL. THIS DOCUMENT IS NOT TO BE REPRODUCED, DISCLOSED OR CIRCULATED IN WHOLE OR IN PART WITHOUT THE PRIOR WRITTEN CONSENT IN EACH INSTANCE OF GARY KEVILLE TRAFFIC MANAGEMENT. © GK-TM 2026