

DUBLIN CITY

HERITAGE PLAN 2002-2006

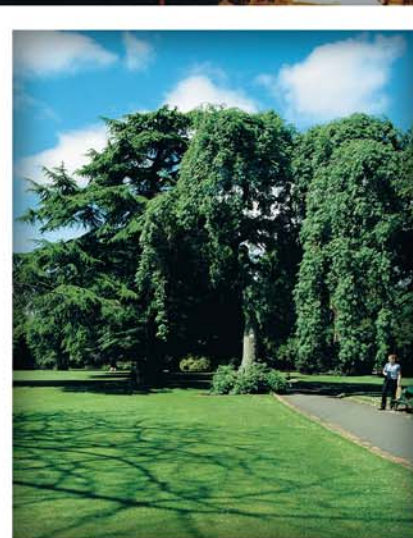
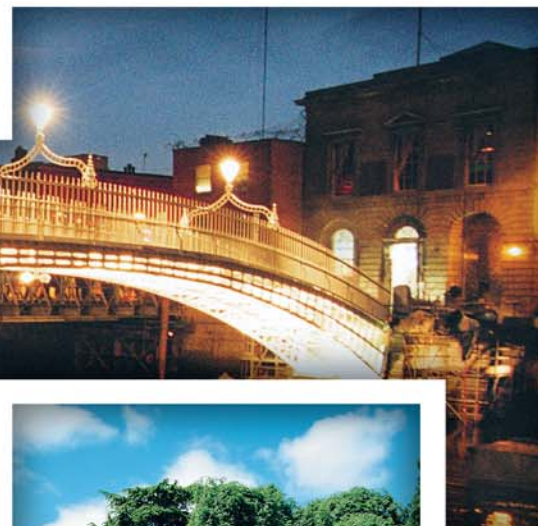
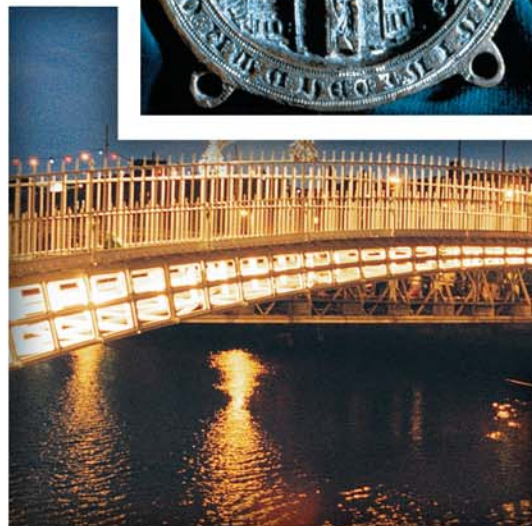
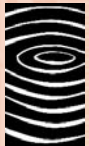


Table of Contents



Dublin City Council
Comhairle Chathair Bhaile Átha Cliath



AN
CHOMHAIRLE
OIDHREACHTA

THE
HERITAGE
COUNCIL

Dublin City Council wishes to acknowledge the role of the Heritage Council in initiating the Dublin City Heritage Plan in association with Dublin City Council.

In particular, Dublin City Council acknowledges the support of the Heritage Council through its joint funding of the Heritage Officer post, and the provision of €89,833 for the implementation of the Heritage Plan in 2002.

	<i>Page</i>
City Manager's Address	3
Introduction	5
Objectives, Targets and Actions	
(i) Archaeology	8
(ii) Architecture	10
(iii) Natural Environment	13
Statement of Strategy	17
Appendix 1	
Membership of Working Groups	20
Appendix 2	
Production Process For Plan	22
Appendix 3	
Consultees	23
Appendix 4	
Summary of Relevant Heritage Legislation	24



City Manager's Address



As part of an innovative National Programme, we are delighted to be one of the first Local Authorities to put together and implement a Local Heritage Plan. Over the coming five years the Dublin City Heritage Plan will greatly enhance the understanding of the valuable heritage resources around us. While at times we might take these resources for granted, our social, economic and cultural standings would suffer greatly without them.

In order to strengthen the understanding of Dublin City's heritage, we actively pursued the appointment of a Heritage Officer, Donncha Ó Dúlaing, in partnership with the Heritage Council, just over a year ago. The role of the Heritage Officer was, through wide-ranging consultation, to put together a long-term action plan for our archaeological heritage, architectural heritage and natural environment. In recognition of the important role that Dublin City Council plays with regard to heritage, both on a day-to-day and long-term basis, all areas within the City Council were consulted and informed. It was also important to establish new, and strengthen existing partnerships. This was achieved and will be maintained with other statutory authorities, heritage interest groups and community groups.

The Heritage Plan offers us the opportunity to improve our knowledge base, raise awareness, create understanding, forge partnerships, inform and put in place best practice and identify and implement key projects.

The Dublin City Development Plan 1999 exhibited our continued commitment to balance developmental pressures with best heritage practice. The Heritage Plan further emphasises our objectives and policies through direct action. It will also inform the ongoing review of policies within the Development Plan, to ensure that we are informed of changes in best practice and can react accordingly.

On behalf of Dublin City Council I would like to thank the Heritage Officer and all those who gave of their time and energy to assist in assembling the Heritage Plan. In particular the expertise of those involved in the Heritage Plan Working Groups was of great benefit.

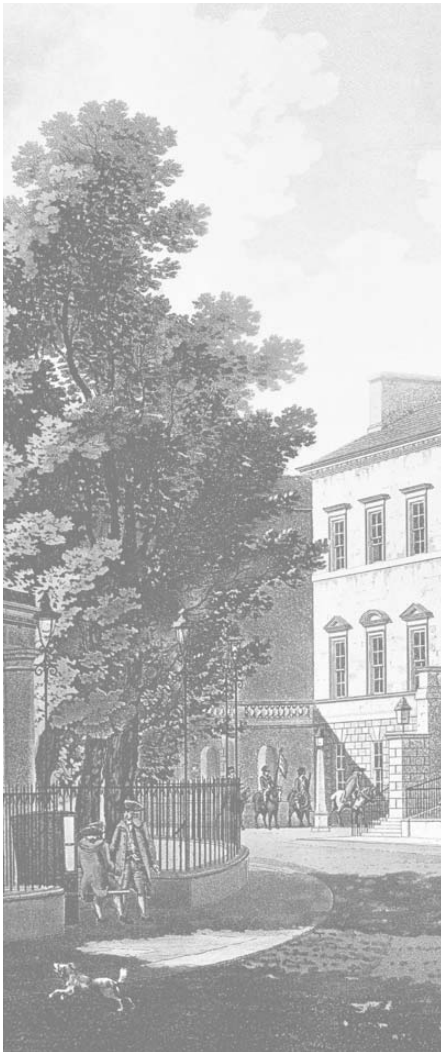
I wish the Heritage Plan every success, and while it may not solve all problems ahead of us, our continued support is assured, in its implementation.

A handwritten signature in black ink, which appears to be 'John Fitzgerald'. The signature is fluid and cursive, with a large initial 'J' and 'F'.

John Fitzgerald
Dublin City Manager



Introduction



When we consider the heritage of Dublin City some things immediately spring to mind, Viking archaeology, Georgian architecture, diverse wildlife habitats. We all have different perceptions as to the definition, value and future of Dublin City's heritage. This Plan is an attempt to harness all of these diverse and often contradictory opinions into a co-ordinated vision of the future for our capital's heritage.

Heritage for the Dublin City Heritage Plan is defined under the 1995 National Heritage Act as including monuments, archaeological objects, heritage objects, architectural heritage, flora, fauna, wildlife habitats, landscapes, seascapes, wrecks, geology, heritage gardens & parks and inland waterways.

The Dublin City Heritage Plan is the first Heritage Plan for the City and is one of the first of its kind in the country. It signals a new approach nationally, to looking at the individual needs of each local authority area, by drawing up a work plan that reflects their needs. This exhibits the growing appreciation of the importance of heritage as an integral part of the city's future. Until now, care for the heritage of Dublin City has been the responsibility of different agencies, interest groups and individuals, but no attempt has been made to co-ordinate these actions on a strategically citywide basis. The production process of this Plan brought a wide spectrum of interests and backgrounds together to produce the Dublin City Heritage Plan.

The City Heritage Plan is a realistic and achievable five-year action plan dealing with citywide issues rather than local projects. It is a concerted effort to recognise problem areas for our shared heritage and, through a partnership approach, implement measures over the next five years that will:

- improve our heritage information base
- enhance communication between all stake holders
- raise heritage awareness
- put in place best practice
- implement key projects

The City Heritage Plan will be co-ordinated by the Heritage Office of Dublin City Council, but will be dependent on a partnership approach for its implementation. To draw together the Plan three working groups were put in place under the following headings:

- Archaeology
- Architecture
- Natural Environment

Each group produced a working paper, and these form the actions to be undertaken over the next five years as the Dublin City Heritage Plan.

The working groups acknowledged that we have a shared responsibility for our heritage. Many of our daily decisions



The Dublin City Heritage Plan can be seen as a parallel to the City Development Board Strategy, both of which will work towards the same overall aim of enhancing, through a partnership approach, the heritage of Dublin City for the future. It is intended to constantly utilise the Dublin City Community Forum to elicit continued feedback, new ideas, and raise awareness of the implementation of the Dublin City Heritage Plan.



impact on heritage, from housing schemes to drainage. The City Heritage Plan will facilitate a greater understanding of the city's heritage between Dublin City Council, national agencies working at a local level, heritage interest groups and local communities, to ensure that we make the most informed decisions possible concerning the future of our shared heritage.

There is greater pressure now on the limited resources that constitute our heritage. It is not possible, however, to conserve everything. It is more a question of balancing the need for legitimate change with the desire for reasonable conservation.

Community involvement is essential to the success of the Plan, in line with Agenda 21; consultation and cross community participation will be encouraged throughout its implementation. Local projects and needs will also be dealt with, as it is intended to implement a structured programme of Local Heritage Plans within the city in the coming years.

This is an achievable and realistic five year plan, it does not set out to remedy and solve all the problems and difficulties facing the heritage of Dublin City today. The actions listed will begin in 2002 (year 1 of the Plan), ending in 2006 (year 5 of the Plan). An annual review and evaluation will be undertaken to ensure that implementation is taking place, and to instigate changes to the plan where it is appropriate.

The emphasis is on shared responsibility for the protection and conservation of Dublin City's heritage. This Plan is a step in the direction of this protection and conservation for future generations.



Objectives, Targets and Actions



Overall Aim: To Protect, Enhance and Promote the Archaeological Heritage of Dublin

(i) ARCHAEOLOGICAL WORKING GROUP POSITION PAPER

OBJECTIVES	TARGETS	ACTIONS	PARTNERS	KEY PLAYER
1. To compile a systematic, comprehensive and accessible body of relevant information relating to the archaeology of Dublin City	<p>a. Investigate existing GIS models relating to archaeology</p> <p>b. Identify & compile existing information</p> <p>c. Standardise information in archaeological reports</p>	<p>a. Set up a group and produce a report identifying sources and current use of GIS information nationally & internationally</p> <p>b. Compile a list of relevant information, its location, format and accessibility</p> <p>c. Produce guidance booklet & checklist form: compile a handbook (Dublin specific) on archaeological reports, content & presentation</p>	<p>a. DCC, SA, IAPA, 3rd level institutes, HC</p> <p>b. as above</p> <p>c. DCC, SA, commercial companies, HC, Dúchas</p>	<p>a. DCC</p> <p>b. DCC, Dúchas</p> <p>c. DCC, Dúchas</p>
2. To raise awareness, through the dissemination of information at local, regional and national levels.	<p>Target Audience</p> <ul style="list-style-type: none"> • Statutory Authorities • Education • Tourism 	<p>a. Establishment of a partnership forum to oversee the implementation of Actions 2 b & c below</p> <p>b. Organise seminars, guidance notes, web site, targeting specific magazines, journals, publications, lectures, liaison with schools</p> <p>c. i. Promote training in heritage/archaeological tourism ii. Publish popular guide to the archaeology of Dublin</p> <p>d. Support the work of the Commission for the Museum of Dublin in establishing a Museum of Dublin and safeguarding the valuable collections of archaeological and heritage objects</p>	<p>a. NMI, DT, HC, Dúchas, DCC</p> <p>b. Dúchas, DoE, Arts Co., Dept. Ed, DCC</p> <p>c. DCC CIÉ, DT, FÁS, 3rd level institutes</p> <p>d. Commission for the Museum of Dublin</p>	<p>a. HO</p> <p>b. HO</p> <p>c. HO & DT</p> <p>d. Commission for Museum of Dublin</p>
3. To address key issues in current archaeological practice	<p>a. Promote best practice for training of urban archaeologists</p> <p>b. Improve communication between regulatory authorities</p> <p>c. Definition of respective roles of Dúchas and Dublin City Council</p>	<p>a. Establish a partnership forum to encourage 3rd level institutes to incorporate practical instruction on excavation practices in Dublin as part of their existing archaeological curricula</p> <p>b. Increase regular communication and establish consistency of approach regarding planning & development between regulatory authorities</p> <p>c. Consider roles of DCC & Dúchas in the planning process</p>	<p>a. Dept Ed, 3rd level institutes, DCC, SA</p> <p>b. NMI, HC, Dúchas, DCC</p> <p>c. CA, Dúchas</p>	<p>a. CA & Dúchas</p> <p>b. NMI, HC, Dúchas, DCC</p> <p>c. CA, Dúchas</p>

(i) ARCHAEOLOGICAL WORKING GROUP POSITION PAPER (cont'd)

OBJECTIVES	TARGETS	ACTIONS	PARTNERS	KEY PLAYER
4. To promote best archaeological practice in DCC, local bodies, the development sector and the wider community	<p>a. Identify local groups and relevant issues</p> <p>b. Identify key public and private development sectors and relevant issues</p> <p>c. Identify issues and priorities relevant to the wider community</p>	<p>a. Establish a working group from representatives (a to c) to identify and address issues in each area</p> <p>b. Organise seminars, publications, journals etc.</p>	(a & b) To include various institutes and other organisations, DCDB Community Forum	(a & b) HO, CA, Dúchas, DCDB
5. To enhance the presentation of the archaeological fabric of Dublin	To identify and undertake flagship projects to enhance and present archaeological monuments	Establish a partnership forum to identify flagship projects, source funding and the implementation of projects	DCC, NMI, FMD, Dúchas	DCC

Arts Co.	Arts Council	DCC	Dublin City Council	HO	Heritage Officer, Dublin City Council
CA	City Archaeologist, Dublin City Council	DT	Dublin Tourism	IAPA	Irish Association of Professional Archaeologist
CIÉ	Coras Iompar Éireann	Dúchas	Dúchas The Heritage Service	NMI	National Museum of Ireland
Dept. Ed	Department of Education	FMD	Friends of Medieval Dublin	SA	Statutory Authorities
DoE	Department of the Environment	GIS	Geographical Information Systems		
DCDB	Dublin City Development Board	HC	The Heritage Council		

Overall Aim: To Promote the Awareness and Conservation of Dublin City's Architectural Heritage through Leadership and Partnership

(ii) ARCHITECTURAL WORKING GROUP POSITION PAPER

OBJECTIVES	TARGETS	ACTIONS	PARTNERS	KEY PLAYER
1. The provision of accessible comprehensive and consistent inventories of a. buildings b. the character of areas	<ul style="list-style-type: none"> a. Unifying existing inventories b. Identify geographical areas not inventoried c. Inventory to include qualitative information on condition of building d. Make relevant information available to the public e. Link inventory information with candidate ACAs f. Continue inventory survey in the identified gap areas 	<p>(a,b,c&d) (i) Undertake a study (including research and collation) of all inventories and make these accessible from a single database. Plot this information on a stratified map and identify gaps in area surveys. Audit the inventories to ensure that they contain qualitative information about building condition. (ii) Make appropriate information available to the public</p> <ul style="list-style-type: none"> e. Assist & monitor the identification and establishment of ACAs by Dublin City Council f. Continue inventory survey in the identified gap areas 	<p>(a,b,c&d) (I&ii) DCC, Dúchas, DCT</p> <ul style="list-style-type: none"> e. DCC, NGOs, An Taisce, Resident Assoc. f. DCC, DCT, Dúchas, UCD 	<p>(a,b,c&d) (I&ii) DCC Planning IT</p> <ul style="list-style-type: none"> e. DCC f. DCC
2. To raise awareness of architectural heritage through education, training and publications	<ul style="list-style-type: none"> a. schools b. building owners c. communities d. libraries 	<ul style="list-style-type: none"> a. Establish a working group to raise awareness of the City's architectural heritage amongst primary and secondary schools b. Develop information mailshots on protected structures and ACAs for building owners/occupiers and their advisers c. Build on existing links with IAPS, LAPS & resident Associations d. Set up exhibition on conservation issues in local libraries, assist local libraries in stocking publications of local historical buildings/structures 	<ul style="list-style-type: none"> a. Dept.ED, DCC, RIAI, Dúchas, NGOs, DCC, City Archive, DCDB b. DCT, HHOD, Dúchas, DCC, DCDB c. DCC, NGOs, Community Groups, DCDB d. DCC, libraries, NGOs, schools, DCDB 	<ul style="list-style-type: none"> a. HO,DCC, Dept.ED, City Hall b. HO c. HO & CO d. Libraries
3. To promote best conservation practice within a. Dublin City Council,	<ul style="list-style-type: none"> a. Develop specific programmes to help City Council officials carry out their duties informed by best practice 	<ul style="list-style-type: none"> a. (i) Arrange targeted workshops for DCC building professionals on an annual basis (ii) Support the professional institutes in arranging their own continuous professional development programmes (as RIAI & CIF) 	<ul style="list-style-type: none"> a. (i) DCC (ii) RTPI, IPI, UCD, DIT, RIAI, IEI, ACEI, SCS, Dúchas 	<ul style="list-style-type: none"> a. (i) DCC (ii) DCC & Partners

(ii) ARCHITECTURAL WORKING GROUP POSITION PAPER (cont'd)

OBJECTIVES	TARGETS	ACTIONS	PARTNERS	KEY PLAYER
<p>b. designers and other professionals</p> <p>c. building trades</p>	(b & c) Develop programmes and build on existing programmes and structures targeted at designers and other professionals and building trades	<p>b. Support the development of regional conservation awards with RIAI/IPI</p> <p>c. Develop links with DIT and work with Dublin City Council direct labour groups to promote training of conservation skills</p>	<p>b. DIT, NGOs, DCC</p> <p>c. CO, RIAI, IPI, BF, DCC</p>	<p>b. DCC</p> <p>c. DCC</p>
4. To undertake educational/flagship training projects of buildings and groups of buildings at risk (in public ownership or non-profit organisations) of an exemplary nature	Establish an annual skills training scheme during the restoration of a building at risk	<p>a. Establish a working group to set up a specialist skills training scheme</p> <p>b. Implementation of specialist skills training scheme</p>	(a&b) DCC, DIT, FÁS, NGOs	(a&b) DCC
5. To develop a Partnership Approach with State Agencies, NGOs and community groups in relation to (a) built heritage policy and b. implementation of specific conservation projects	<p>a. Compile a list of NGOs and community groups (develop links with DCDB)</p> <p>b. Develop a partnership forum</p> <p>c. Structure for formal liaison between DCC and State Agencies e.g. OPW</p> <p>d. Revolving funds e.g. Dublin Civic Trust</p> <p>e. Community groups skills training</p>	<p>a. Co-ordinate, collate, update and review the existing lists of contact information, and assess their level of awareness</p> <p>b. Investigate the establishment of a community forum involving state agencies, NGOs and community groups, to draw together recommendations with regard to prioritisation and implementation of conservation projects</p> <p>c. Support the establishment of a communication forum to discuss and resolve policies relating to State owned protected structures and historical monuments, creating a common approach</p> <p>d. Further discussion between DCC & DCT re. the establishment of a Capital Acquisition Fund</p> <p>e. Establish communication with Dublin Inner City Partnership and other community groups to encourage community involvement in identifying and undertaking conservation projects</p>	<p>a. DCC, DCDB, HO, Community Workers Co-op</p> <p>b. State agencies, NGOs, community groups.</p> <p>c. DCC, OPW, Dúchas</p> <p>d. DCC, DCT</p> <p>e. DCC, DCDB, community organisations</p>	<p>a. HO</p> <p>b. HO</p> <p>c. DCC, OPW</p> <p>d. DCC, DCT</p> <p>e. DCC</p>

(ii) ARCHITECTURAL WORKING GROUP POSITION PAPER (cont'd)

OBJECTIVES	TARGETS	ACTIONS	PARTNERS	KEY PLAYER
6. To promote environmental economic and cultural sustainability	<p>a. Translate national policy at local level (Local agenda 21)</p> <p>b. Identify research projects on sustainability</p>	<p>a. Support the recommendations and measures outlined by the task force on construction and demolition waste, to prevent the generation of unnecessary waste during the design of new work</p> <p>b. Appoint a consultant to carry out a study on the sustainable reuse of buildings on a typological basis, including new build vs. reuse costs, taking into account environmental and heritage values</p>	<p>a. Dúchas, DCC, NGOs, construction industry</p> <p>b. DCC, construction industry</p>	<p>a. DCC</p> <p>b. DCC</p>

ACAs	Architectural Conservation Areas	DCT	Dublin Civic Trust	IPI	Irish Planning Institute
ACEI	Association of Chartered Engineers of Ireland	DCC	Dublin City Council	LAPs	Local Area Plans
BF	Bord Fáilte	DIT	Dublin Institute of Technology	NGOs	Non-Governmental Organisations
CO	Conservation Office, Dublin City Council	Dúchas	Dúchas The Heritage Service	OPW	Office of Public Works
CIF	Construction Industry Federation	HO	Heritage Officer, Dublin City Council	RIAI	Royal Institute of the Architects of Ireland
DAHGI	Department of Arts, Heritage, Gaeltacht & the Islands	HHOD	Historic Heart of Dublin	RTPI	Royal Town Planners Institute
Dept.ED	Department of Education	IAPs	Integrated Area Plans	SCS	Society of Chartered Surveyors
DCDB	Dublin City Development Board	IEI	Institute of Engineers of Ireland	UCD	University College Dublin

Overall Aim: To Conserve, Advance and Protect the Living Natural Environment of Dublin City

(iii) NATURAL ENVIRONMENT WORKING GROUP POSITION PAPER

OBJECTIVES	TARGETS	ACTIONS	PARTNERS	KEY PLAYER
1. To compile a comprehensive and accessible working archive for the natural environment	<ul style="list-style-type: none"> a. Collect existing data on Dublin City & produce a GIS Map on a website b. Habitat identification c. Habitat/flora & fauna surveys – typically site specific d. Co-ordination Steering Group e. Geological and soil mapping 	<ul style="list-style-type: none"> a. Undertake a desktop research study inputting data from existing data sources, identify correct GIS system and commence data input b. Assess & correlate info. from maps, aerial photography, known sites etc. into usable format also refer to 1 (a) making information available c. Undertake habitat survey of Dublin City, identifying areas on a typological basis with biodiversity enhancement potential d. Establish monitoring group to oversee implementation of Dublin City Heritage Plan and to focus & direct energies of various agencies e. Collect information as part of 1(a) from EIS documents, map as part of 1(b), where knowledge is missing survey as part of 1(d) 	<ul style="list-style-type: none"> a. DCC, Dúchas, BWI, DNFC, IWT, BCG, Universities b. Special interest groups, DoM, fisheries, Dúchas, libraries, BCG, DCDB c. Dúchas, NHM, universities, NGOs, DCC, BCG, DCDB d. DCC, NGOs, GOs, universities e. GSI, Dublin Port, universities, DoE, Teagasc, DCC 	<ul style="list-style-type: none"> a. DCC & IT company b. DCC c. DCC, NGOs, land owners, universities d. DCC e. Teagasc, universities, GSI
2. To raise awareness & appreciation of the natural environment	<ul style="list-style-type: none"> a. Educational elements in Management Plans b. Target the Formal Education System to promote and facilitate overall aim c. Target the public/informal education system, through local, social interest groups d. Devise a directory of responsibilities with respect to the natural environment 	<ul style="list-style-type: none"> a. Appoint consultant to devise an educational outreach system for management plans of public parks and amenities b. (i) Support the establishment of a forum with Dept. Ed to discuss and review the current curriculum and investigate the expansion of ENFOs function as a co-ordinating body for the communications network (ii) Promote the expansion of the Heritage Council School Scheme and An Taisce's Green School Scheme c. Promote the implementation of the biodiversity component in the Tidy Towns Competition using a Dublin City community as a pilot d. Appoint a consultant to undertake a pilot study within Dublin City to prepare an environmental directory 	<ul style="list-style-type: none"> a. DCC, Community Groups, DNFC b. (i) Dept.Ed, NGOs, teachers unions, DoE (ii) HC, Dept.Ed, NGOs c. DoE, NGOs, DCC, Area Partnerships d. HO, EPA, DoE 	<ul style="list-style-type: none"> a. HO b. (i) Dept.Ed (Biology Dept) (ii) HO c. Environmental specialist, NGOs d. HO

(iii) NATURAL ENVIRONMENT WORKING GROUP POSITION PAPER (cont'd)

OBJECTIVES	TARGETS	ACTIONS	PARTNERS	KEY PLAYER
3. To develop a strategic and co-ordinated approach to the management and conservation of the natural environment	a. Devise management plans agreed by stakeholders for discreet sites (i) golf courses, graveyards (ii) rivers, canals, railways (ensuring management plans build upon potential benefit/linkage with adjoining assets)	(a & b) Appoint a consultant to develop templates for site management adapting existing management plan format as produced by Dúchas: Produce template in consultation with landowners and encourage creation of management plans	(a & b) HC, DCC, Dúchas, WI, CFB, private landowners, NGOs	(a & b) HO & Dúchas
	b. Prototype plans to be prepared and plans to be registered with Planning Authority			
	c. Planning process to adhere to management plans and identify natural environment characteristics of site	(c & d) (i) Ensure that site management plans are recognised and supported within the City Development Plan & local heritage plans ii) Support the development of a statutory mechanism to protect an area of natural heritage similar to TPO or protected structures	(c & d) (i&ii) DCC, HO, Dúchas, NGOs	(c & d) (i&ii) DCC, HO, Dúchas
	d. Amelioration/planning gain mechanism to be devised when planning process impacts upon natural asset			
	e. Devise a co-ordinated and integrated approach to the management of Inland Waterways	e. Support the investigation of the best approach in managing and conserving our rivers and canals with an emphasis on co-ordination between local authorities, communities and stakeholders	e. Local Authorities, DoE, Dúchas, OPW, Communities, etc.	e. Local Authorities
	f. Management Plans for Natural Heritage Areas (NHAs), Special Protected Areas (SPAs) & Special Areas of Conservation (SACs)	f. Support Dúchas in the drafting and implementation of new management plans and the review of existing management plans for NHAs, SPAs and SACs in Dublin Bay	f. Dúchas, Local Authorities, NGOs Communities, etc.	f. Dúchas

(iii) NATURAL ENVIRONMENT WORKING GROUP POSITION PAPER (cont'd)

OBJECTIVES	TARGETS	ACTIONS	PARTNERS	KEY PLAYER
4. To develop and create habitats within Dublin City	a. Issue guidelines for Dublin City Council re. Habitat management/enhancement in City Parks	a. (i) Commission a study to produce sensitive habitat guidelines (ii) devise an action plan for habitat/biodiversity expansion within parks	a. DCC, Dúchas	a. HO
	b. Increase wildlife areas within parks	b. Develop a strategy for public awareness of wildlife areas within parks	b. DCC, NGOs, 3rd level institutions	b. DCC
	c. Connect parks through corridors	c. (i) Instigate a feasibility study to examine the current degree of connectivity of parks and the potential expansion and creation of further links (ii) Amelioration of existing corridors	c. (i&ii) DCC, Dúchas, Local Community Reps, NGOs	c. DCC
	d. Investigate potential for habitat creation in greenfield and brownfield sites	d. Identify priority greenfield & brownfield sites and monitor implementation of habitat management guidelines in these sites Monitoring to be undertaken by Wildlife Officer in DCC	d. DCC, An Taisce, Dúchas, Developers	d. DCC
	e. Highlight the potential of front & back gardens as wildlife corridors	e. (i) Link to 2 b&c (ii) Produce handbook on wildlife in the garden	e. Garden Centers, DCC, An Taisce	e. HO

BCG	Bat Conservation Group	DoE	Department of the Environment	GSI	Geological Survey of Ireland
BF	Bord Fáilte	DoM	Department of the Marine	HC	The Heritage Council
BWI	Birdwatch Ireland	Dúchas	Dúchas The Heritage Service	HO	Heritage Officer, Dublin City Council
CFB	Central Fisheries Board	EIS	Environmental Impact Statement	IWT	Irish Wildlife Trust
DCC	Dublin City Council	ENFO	The Environmental Information Service	NGOs	Non-Governmental Organisations
DCDB	Dublin City Development Board	EPA	Environmental Protection Agency	NHM	Natural History Museum
DNFC	Dublin Naturalists Field Club	GIS	Geographical Information Systems	OPW	Office of Public Works
Dept. Ed	Department of Education	GOs	Government Organisations	WI	Waterways Ireland



Statement of Strategy



The Dublin City Heritage Plan is an action plan for heritage covering the area within the boundaries of Dublin City Council. The Plan will be implemented on a partnership basis with a key player being identified for each action. The Heritage Officer of Dublin City Council will act as co-ordinator for projects as indicated in the Objectives, Targets and Actions. Implementation of the Plan will initially require an amount of flexibility in approach, as the methodology being taken is new and innovative.

Timeframe

The Heritage Plan has been laid out over a five-year implementation period. A detailed annual work programme will be identified each year outlining actions, partners, fund sources and timeframes. The annual work programmes will be agreed by the Dublin City Heritage Forum, (see below), when annual budgets have been confirmed.

Finance

The overall cost of implementing the five year programme of the Dublin City Heritage Plan is in the region of €1,575,000 (c. £1.25m). A funding commitment from the Department of Arts, Heritage, Gaeltacht and the Islands has not yet

been clarified. This situation will become apparent following publication of the National Heritage Plan by the Department, in the near future. The Heritage Council has agreed to view and assess the first year projects of the Dublin City Heritage Plan (as well as the five-year goals) as an application for funding. The Heritage Council has undertaken to co-fund seven projects in year one, with Dublin City Council.





Partners

The Partners listed are proposed partners. Partners will be sought to support projects each year as the annual work programme is agreed.

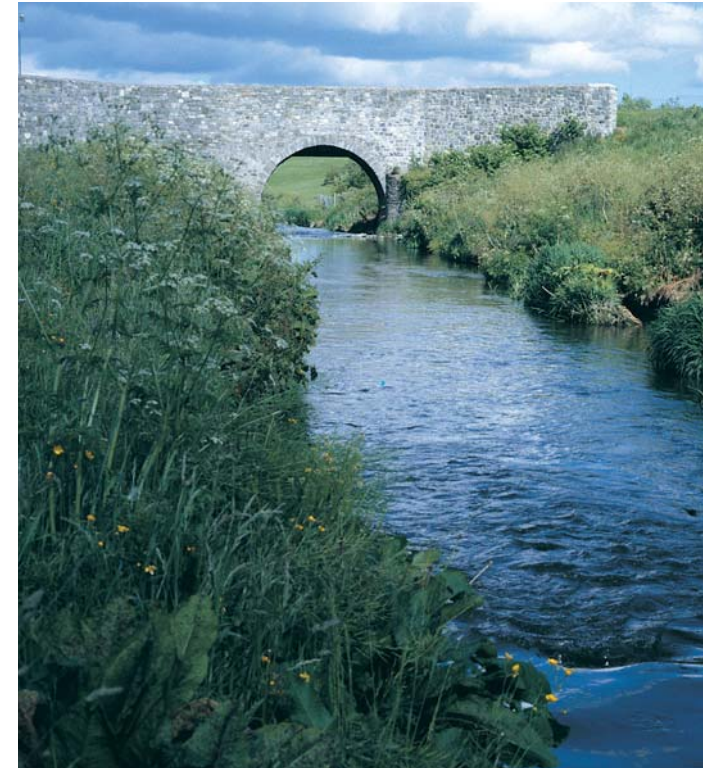
Monitoring & Evaluation

A Dublin City Heritage Forum (to be agreed by Council) will be established with representatives from :

- Dublin City Council
- State Agencies
- Community and Voluntary Sector
- Heritage Organisations

Evaluating the plan will involve assessing whether the plan actually achieved what it set out to achieve, how well it did that, and whether or not it could achieve the same objectives more effectively and efficiently through some other means. Both the Heritage Officer and the Dublin City Heritage Forum will have central roles in monitoring and evaluating the implementation of the plan. This will be done on a formal basis by the Dublin City Heritage Forum meeting regularly, in order to evaluate the implementation of the current year actions, and to assess the working programme for the following year.

The primary indicator of the successful performance of the Plan, or otherwise, will be the completion of the actions which are set out in the Plan, and the extent to which they contribute to the achievement of the objectives. The evaluation of the plan will, therefore, be expressed in both quantitative and qualitative terms.





APPENDIX 1: MEMBERSHIP OF WORKING GROUPS



ARCHAEOLOGICAL WORKING GROUP

NAME	POSITION	ORGANISATION
Dr. Ruth Johnson	City Archaeologist	Dublin City Council
Dáire O'Rourke	Archaeologist	NRA
Nicky Matthews	Ass. Conservation Officer	Dublin City Council
Gerry Folan	APO - Planning & Dev.	Dublin City Council
Pat McDonnell	Dublin City Planning Officer	Dublin City Council
Mairéad Weaver	Archaeologist	Dúchas The Heritage Service
Rob Goodbody	Sen. Exec. Planner	Dublin City Council
Dr. Howard Clarke	Historian	UCD
Dr. Seán Duffy	Historian	TCD
Linzi Simpson	Archaeologist	M.Gowen & Co.Ltd

ARCHITECTURAL WORKING GROUP

NAME	POSITION	ORGANISATION
Susan Roundtree	Conservation Officer	Dublin City Council
John Martin (Michael Reynolds)	Dep. City Planning Officer	Dublin City Council
Jim Barrett (Milo Kane)	City Architect	Dublin City Council
Freddie O'Dwyer	Architect	Dúchas The Heritage Service
Colm Murray (Jaqui Donnelly)	Architectural Inventory	Dúchas The Heritage Service
Geraldine Walsh	CEO	Dublin Civic Trust
Mary Bryan	Conservation Officer	Irish Georgian Society
Ian Lumley	Heritage Officer	An Taisce
Paul Arnold	Architect	P. Arnold Architects
Peter Pearson	Historian	



NATURAL ENVIRONMENT WORKING GROUP

NAME

Gerry Barry
Pat Corrigan
Linda Patton
Clare Caffrey
Prof. David Jeffrey
Faith Wilson
Lorraine Dufficey
Damian Nolan
Declan Doogue
Pat Coughlan

POSITION

Parks Superintendent
Warden – Bull Island
Wildlife Officer
Senior Planner
Botonist
Field Education Officer
Campaigns Manager
Representative
Botonist
District Supervisor

ORGANISATION

Dublin City Council
Dublin City Council
Dúchas The Heritage Service
Dublin City Council
Trinity College
Birdwatch Ireland
Irish Wildlife Trust
An Taisce

Dublin City Council





APPENDIX 2: PRODUCTION PROCESS FOR DUBLIN CITY HERITAGE PLAN

December 2000	Proposed process presented to the Heritage Council.
January 2001	Proposed process presented to the Planning and Economic Development Management Team, Dublin City Council.
February-April 2001	Representatives met from stake holders/key players to discuss process and to elicit support and nominees to the three working groups.
May 2001	First facilitated meeting of the three working groups under the headings, archaeological heritage, architectural heritage and the natural environment.
June 2001	Second facilitated meeting of the three working groups, following which draft working papers were circulated for comment.
August 2001	Third meeting of focused working groups held to refine the draft working papers into draft City Heritage Plan.
September 2001	Present draft City Heritage Plan to the Special Policy Committee of Economic Development, Planning & European Affairs.
October 2001	Consult with key stakeholders of Dublin City Heritage Plan including Working Groups.
November 2001	Present draft City Heritage Plan to the Special Policy Committee of Arts, Culture & Youth Affairs, and Dublin City Council.
November-December 2001	Public Consultation Process inviting comment and ideas on draft City Heritage Plan.
February 2002	Presentation of final draft of Dublin City Heritage Plan Dublin City Council.
March 2002	Launch of Dublin City Heritage Plan.

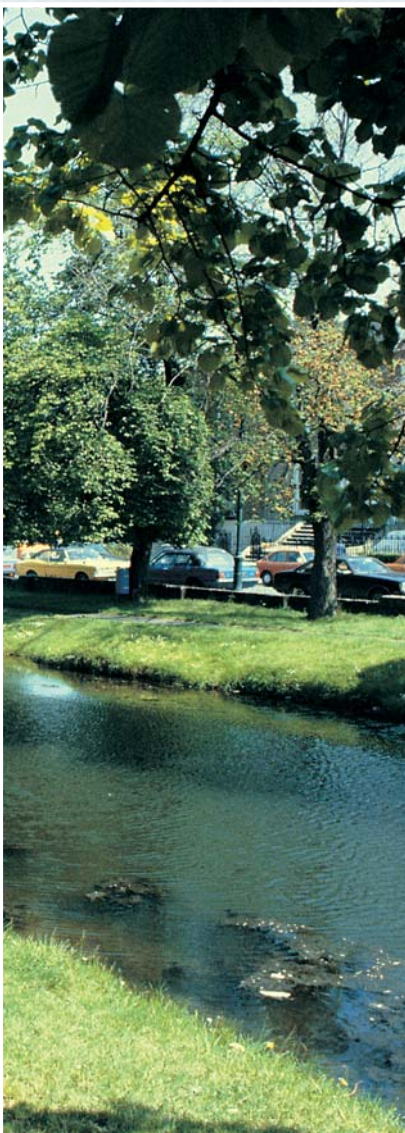
APPENDIX 3: CONSULTEES



An Taisce
Bat Conservation Group
Birdwatch Ireland
Declan Doogue
Dept. of Arts, Heritage, Gaeltacht & the Islands
Dublin City Development Board
Dublin City Council
Dublin City Public Libraries
Dublin Civic Trust
Dublin Institute of Technology
Dúchas The Heritage Service
ENFO, The Department of the Environment
The Heritage Council
Irish Architectural Archive
Irish Georgian Society

Irish Wildlife Trust
Linzi Simpson
Margaret Gowan & Co. Ltd
National Roads Authority
Neil Nerney
Paul Arnold
Peter Pearson
Raheny Heritage Society
Richard Good
Royal Institute of the Architects of Ireland
Sandymount & Merrion Residents Association
Trinity College Dublin
University College Dublin
Individual submissions





APPENDIX 4: SUMMARY OF RELEVANT HERITAGE LEGISLATION

Heritage and Planning Legislation

The Local Government (Planning and Development Acts, 1963-2000).
The Heritage Act, 1995.
European Planning Legislation
EC Directive 85/337/EEC - re EIS.
Archaeology and archaeological objects/wrecks
National Monuments Act 1930 and subsequent amendments of 1954, 1987 and 1994.
National Cultural Institutions Act, 1997.
Continental Shelf Act, 1968.

Built Heritage

The Local Government (Planning and Development Acts, 1963-2000).
The National Inventory of Architectural Heritage Act (NIAH), 1999.

Natural Heritage

The Wildlife Act, 1976.
Wildlife Amendment Bill, 2000.
EU Birds Directive (Council Directive 79/409/EEC), 1979 (ratified 1985).
EU Habitats Directive (Council Directive 92/43/EEC), 1992 (ratified 1997).
Whale Fisheries Act, 1937.

Heritage Objects / Museums and Archives

Vanta Convention
Local Government Act, 1994.
National Cultural Institutions Act, 1997.

Landscapes / Seascapes and Heritage Gardens and Parks

The Local Government (Planning and Development Acts, 1963-1999).
Planning and Development Bill 2000.

INTERNATIONAL CONVENTIONS

General

UNESCO Convention for the protection of the World Cultural and Natural Heritage (ratified 1992).

Archaeology

European Convention on the Protection of the Archaeological Heritage (Valletta Convention), 1997.

Architecture

European Convention on the Protection of the Architectural Heritage of Europe (Granada Convention), 1997.
Burra Charter , 1979-'99.

Natural

Convention on the Conservation of European Wildlife and Natural Habitats (Berne Convention), 1979.
Convention on the Conservation of Migratory Species of Wild Animals (Bonn Convention), 1979.
Agreement on Conservation of Bats in Europe (Bonn Convention), 1993.
Conservation of Wetlands of International Importance (Ramsar Convention) ,1971.
International Convention for the Regulation of Whaling, 1946.
Convention on Biological Diversity, 1992.
Convention on International Trade in Endangered Species (CITES), 1974.
Agreement on the Conservation of African-Eurasian Migratory Waterbirds (AEWA) (Bonn Convention), 1996.
International Tropical Timber Agreement 1994, (1996).
Pan-European Biological and Landscape Diversity Strategy, 1995.



Dublin City Council
Comhairle Chathair Bhaile Átha Cliath

AN
CHOMHAIRLE
OIDHREACHTA



THE
HERITAGE
COUNCIL

DUBLIN CITY COUNCIL, PLANNING & DEVELOPMENT DEPT., BLOCK 4, FLOOR 3, CIVIC OFFICES, WOOD QUAY, DUBLIN 8.

TELEPHONE: +353 01 672 3184. FAX: +353 01 677 7780. E-MAIL: donncha.odulaing@dublincity.ie

COMHAIRLE CHATHAIR BHAILE ÁTHA CLIATH, AN ROINN PLEANÁLA & FORBARTHA, BLOC 4, URLÁR 3, OIFIGÍ NA CATHRACH, AN CHÉ ADHMAID, BAILE ÁTHA CLIATH 8.

TEILEAFÓN: +353 01 672 3184. FAICS: +353 01 677 7780. RÍOMHPOST: donncha.odulaing@dublincity.ie